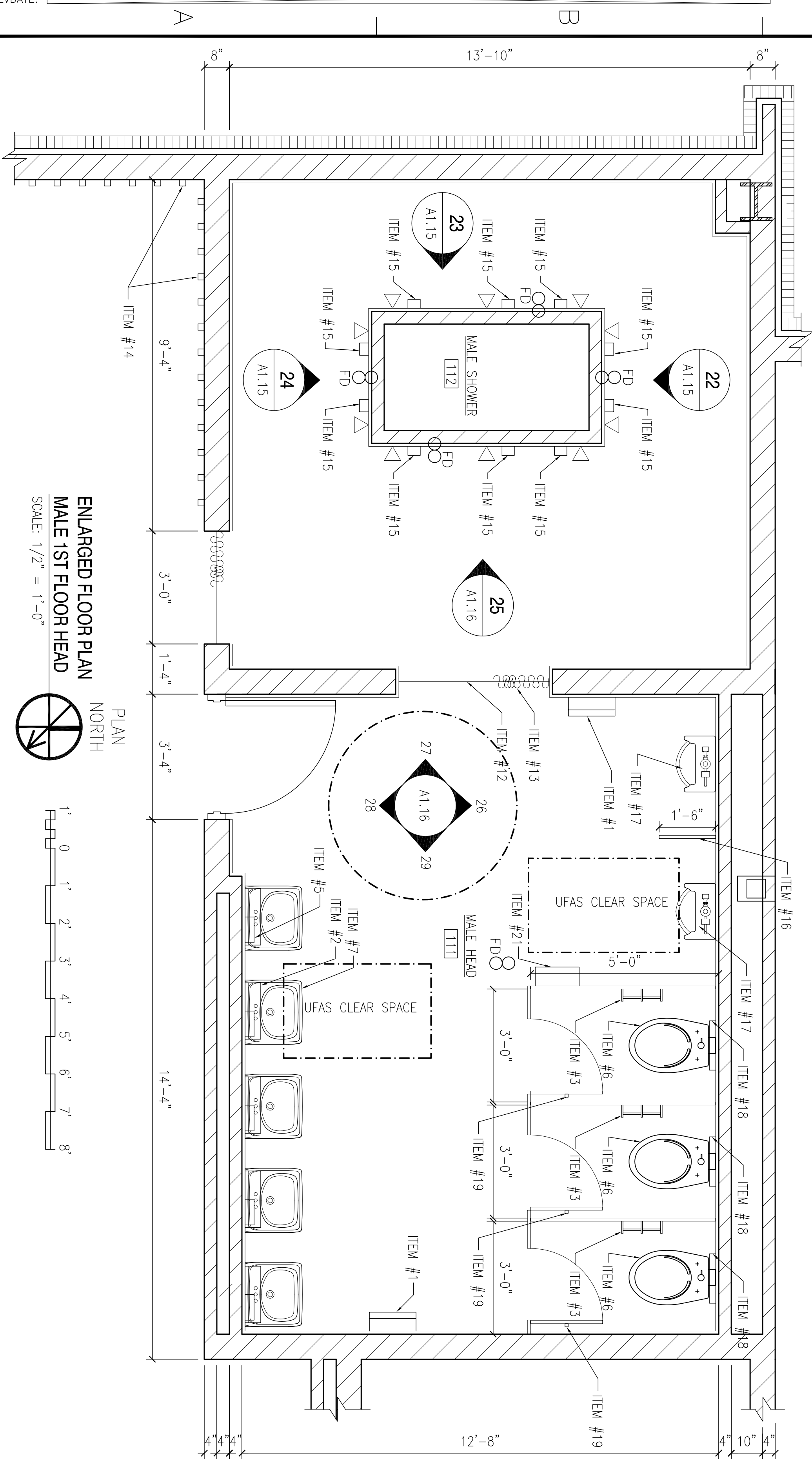
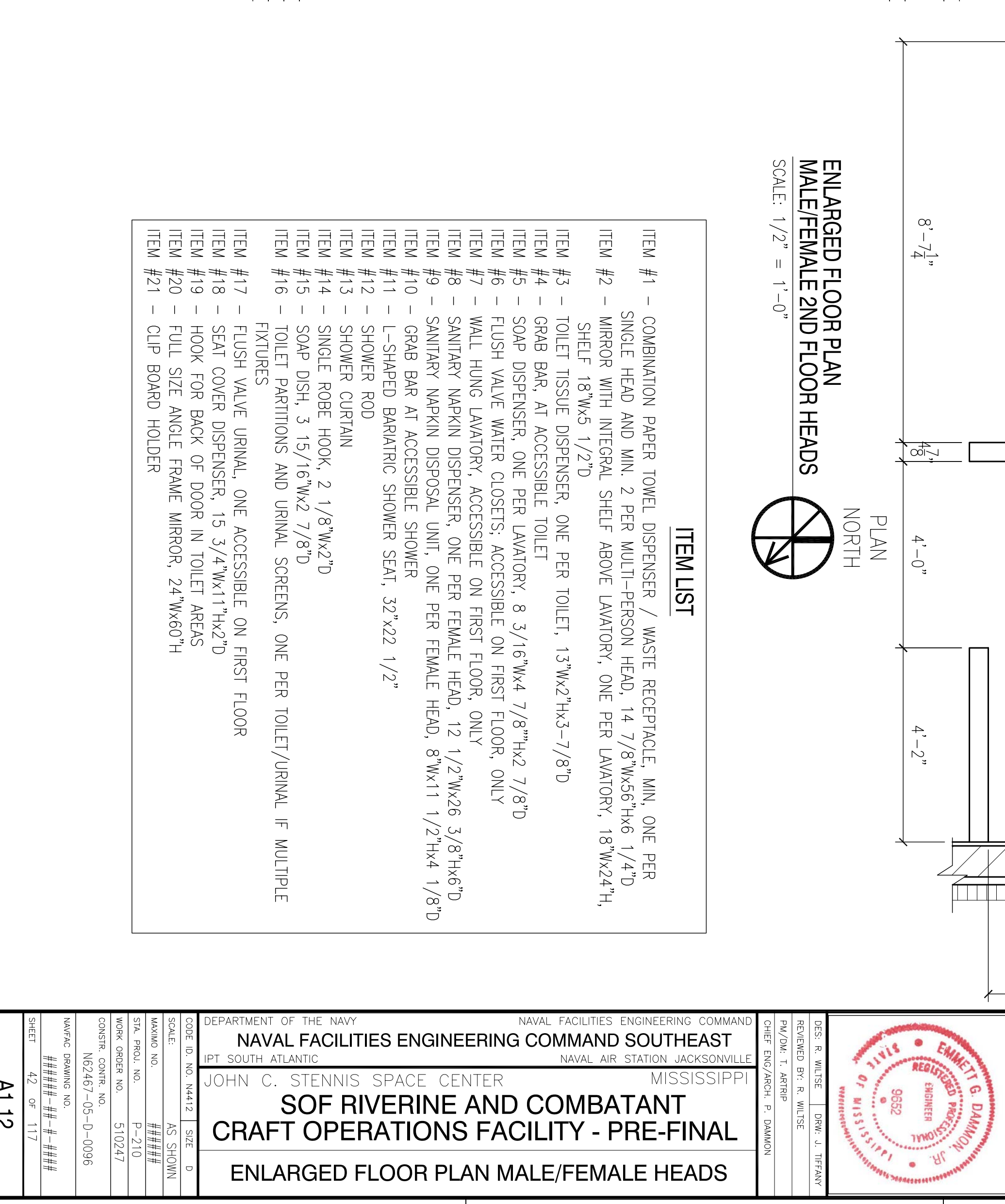


ENLARGED FLOOR PLAN
ADA 1ST FLOOR HEADS/SHOWER
SCALE: 1/2" = 1'-0"
PLAN NORTH



ENLARGED FLOOR PLAN
MALE 1ST FLOOR HEAD
SCALE: 1/2" = 1'-0"
PLAN NORTH



ENLARGED FLOOR PLAN
MALE/FEMALE 2ND FLOOR HEADS
SCALE: 1/2" = 1'-0"
PLAN NORTH

ITEM LIST

- ITEM #1 - COMBINATION PAPER TOWEL DISPENSER / WASTE RECEPTACLE, MIN. ONE PER SINGLE HEAD AND MIN. 2 PER MULTI-PERSON HEAD, 14 7/8"Wx56 1/4"Hx6 1/4"D
- ITEM #2 - MIRROR WITH INTEGRAL SHELF ABOVE LAVATORY, ONE PER LAVATORY, 18"Wx24"H, SHELF 18"Wx5 1/2"D
- ITEM #3 - TOILET TISSUE DISPENSER, ONE PER TOILET, 13"Wx2"Hx3-7/8"D
- ITEM #4 - GRAB BAR, AT ACCESSIBLE TOILET
- ITEM #5 - SOAP DISPENSER, ONE PER LAVATORY, 8 3/16"Wx4 7/8"Hx2 7/8"D
- ITEM #6 - FLUSH VALVE WATER CLOSETS, ACCESSIBLE ON FIRST FLOOR, ONLY
- ITEM #7 - WALL HUNG LAVATORY, ACCESSIBLE ON FIRST FLOOR, ONLY
- ITEM #8 - SANITARY NAPKIN DISPENSER, ONE PER FEMALE HEAD, 12 1/2"Wx26 3/8"Hx6"D
- ITEM #9 - SANITARY NAPKIN DISPOSAL UNIT, ONE PER FEMALE HEAD, 8"Wx11 1/2"Hx4 1/8"D
- ITEM #10 - GRAB BAR AT ACCESSIBLE SHOWER
- ITEM #11 - L-SHAPED BARIATRIC SHOWER SEAT, 32"x22 1/2"
- ITEM #12 - SHOWER ROD
- ITEM #13 - SHOWER CURTAIN
- ITEM #14 - SINGLE ROBE HOOK, 2 1/8"Wx2"D
- ITEM #15 - SOAP DISH, 3 15/16"Wx2 7/8"D
- ITEM #16 - TOILET PARTITIONS AND URINAL SCREENS, ONE PER TOILET/URINAL, IF MULTIPLE FIXTURES
- ITEM #17 - FLUSH VALVE URINAL, ONE ACCESSIBLE ON FIRST FLOOR
- ITEM #18 - SEAT COVER DISPENSER, 15 3/4"Wx11"Hx2"D
- ITEM #19 - HOOK FOR BACK OF DOOR IN TOILET AREAS
- ITEM #20 - FULL SIZE ANGLE FRAME MIRROR, 24"Wx60"H
- ITEM #21 - CLIP BOARD HOLDER

DEPARTMENT OF THE NAVY NAVAL FACILITIES ENGINEERING COMMAND SOUTHEAST IPT SOUTH ATLANTIC JOHN C. STENNIS SPACE CENTER SOF RIVERINE AND COMBATANT CRAFT OPERATIONS FACILITY - PRE-FINAL ENLARGED FLOOR PLAN MALE/FEMALE HEADS	NAVAL FACILITIES ENGINEERING COMMAND NAVAL AIR STATION JACKSONVILLE MISSISSIPPI	DES. R. WITSE CHECKED BY: R. WITSE PUN/INK: T. ARBIB CHIEF ENGINEER: P. DAMMON		DAMMON ENGINEERING, INC. CIVIL/MECHANICAL/PLUMBING/ELECTRICAL 5001 LA 7028 SUITE 100 (985) 649-4332 www.de.2026		<table border="1"> <thead> <tr> <th>SYM</th> <th>DESCRIPTION</th> <th>DATE</th> <th>APPR</th> </tr> </thead> <tbody> <tr> <td> </td> <td> </td> <td> </td> <td> </td> </tr> </tbody> </table>	SYM	DESCRIPTION	DATE	APPR				
SYM	DESCRIPTION	DATE	APPR											