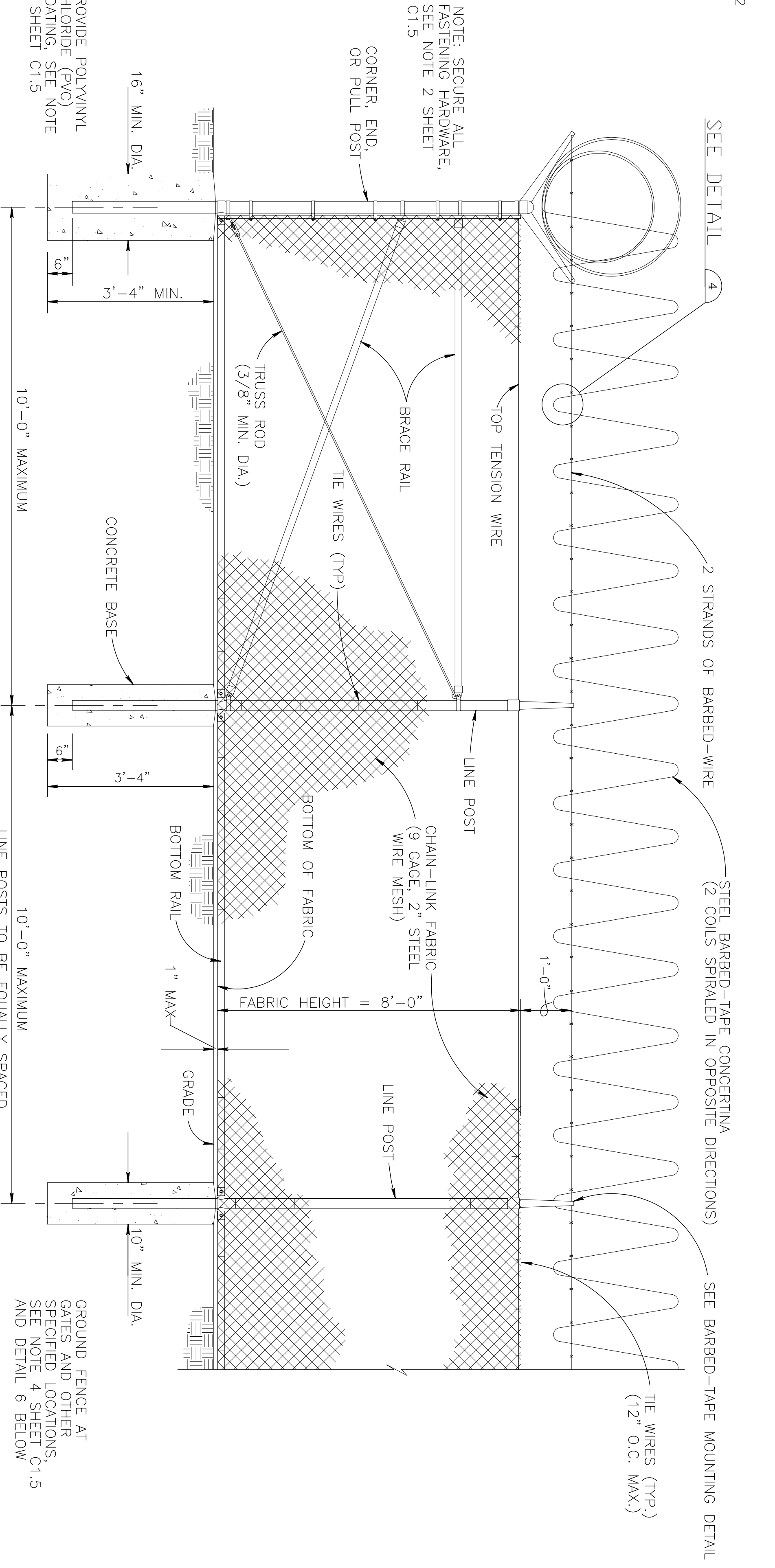
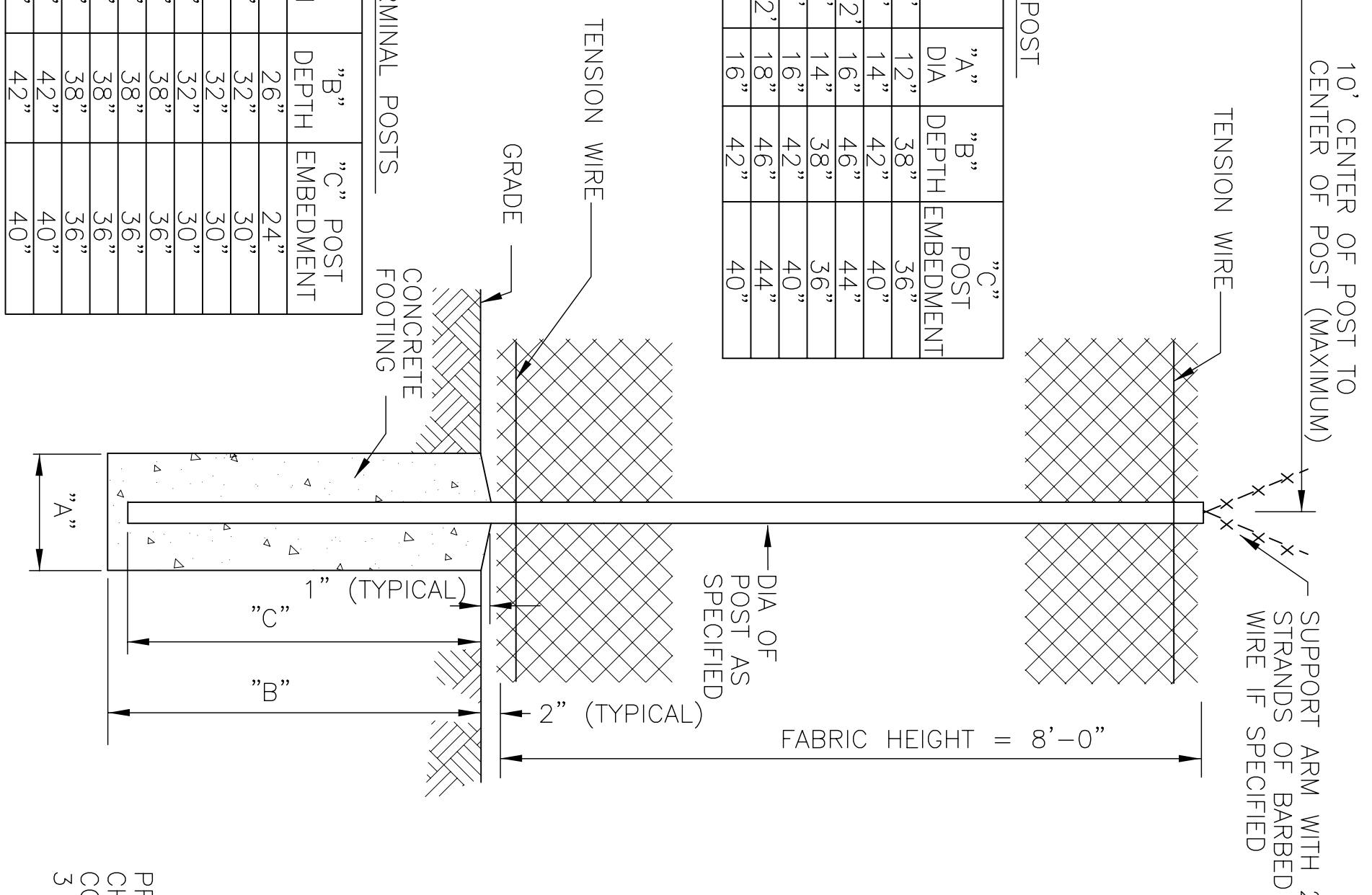


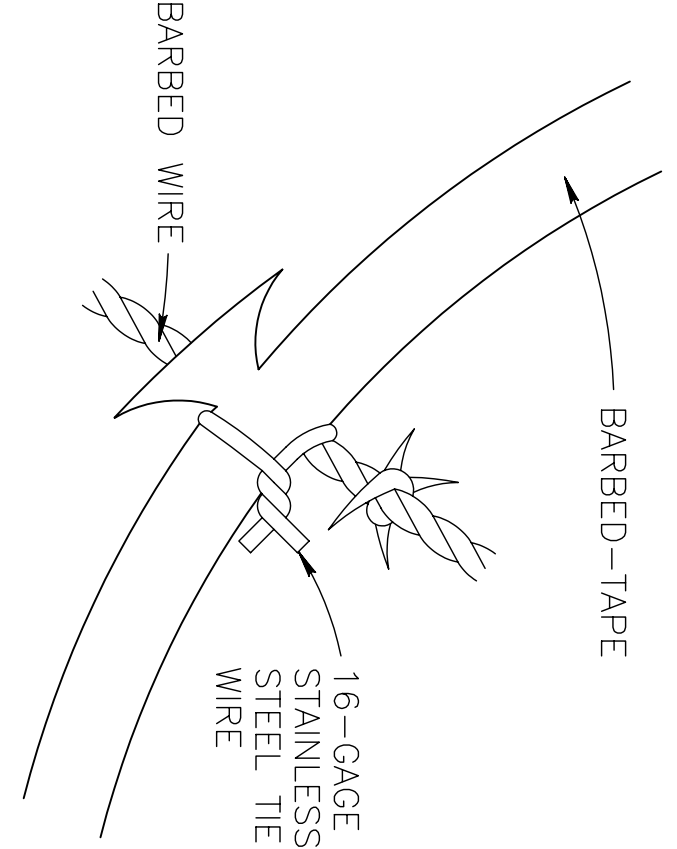
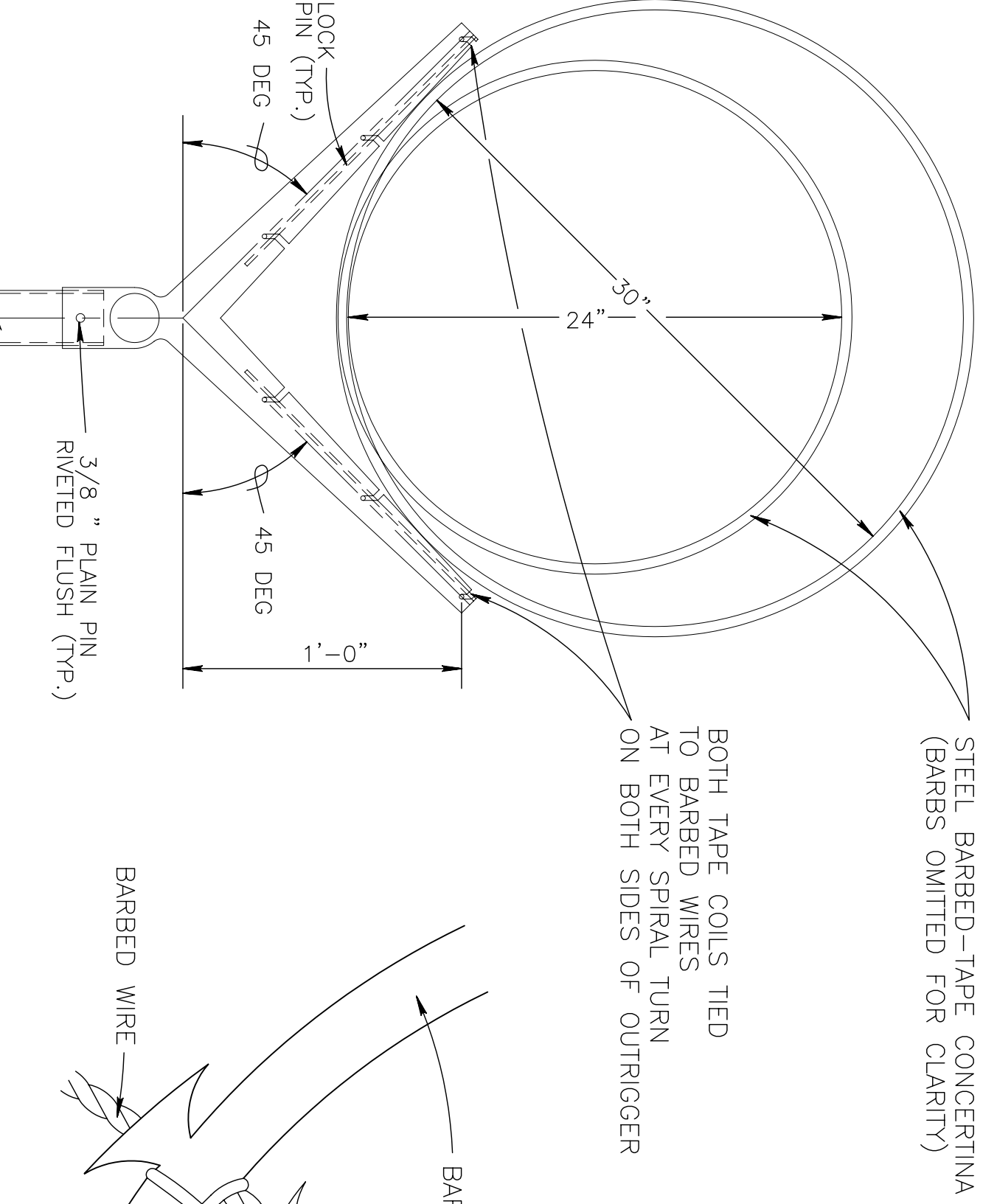
GATE LEAF WIDTH	GATE POST HEIGHT (OD)	FABRIC DIA	"A" POST DEPTH	"B" POST DEPTH	"C" POST EMBEDMENT
3' TO 6'	2.875"	3" TO 5"	12"	38"	36"
6' TO 10'	3.5"	6" TO 9"	14"	42"	40"
10' TO 12'	4.000"	10" TO 12"	16"	46"	44"
13' TO 18'	6.625"	3" TO 5"	14"	42"	40"
		6" TO 9"	16"	46"	44"
		10" TO 12"	18"	50"	48"
		14" TO 16"	24"	60"	58"



FABRIC HEIGHT	TYPE	"A" POST DIA	"B" POST DEPTH	"C" POST EMBEDMENT
3'-0" TO 4'-0"	LINE	6"	26"	24"
	TERMINAL	10"	32"	30"
5'-0"	LINE	8"	32"	30"
	TERMINAL	10"	32"	30"
6'-0" TO 9'-0"	LINE	12"	38"	36"
	TERMINAL	12"	38"	36"
10'-0" TO 12'-0"	LINE	18"	48"	46"
	TERMINAL	18"	48"	46"
13'-0" TO 18'-0"	LINE	24"	60"	60"
	TERMINAL	24"	60"	60"

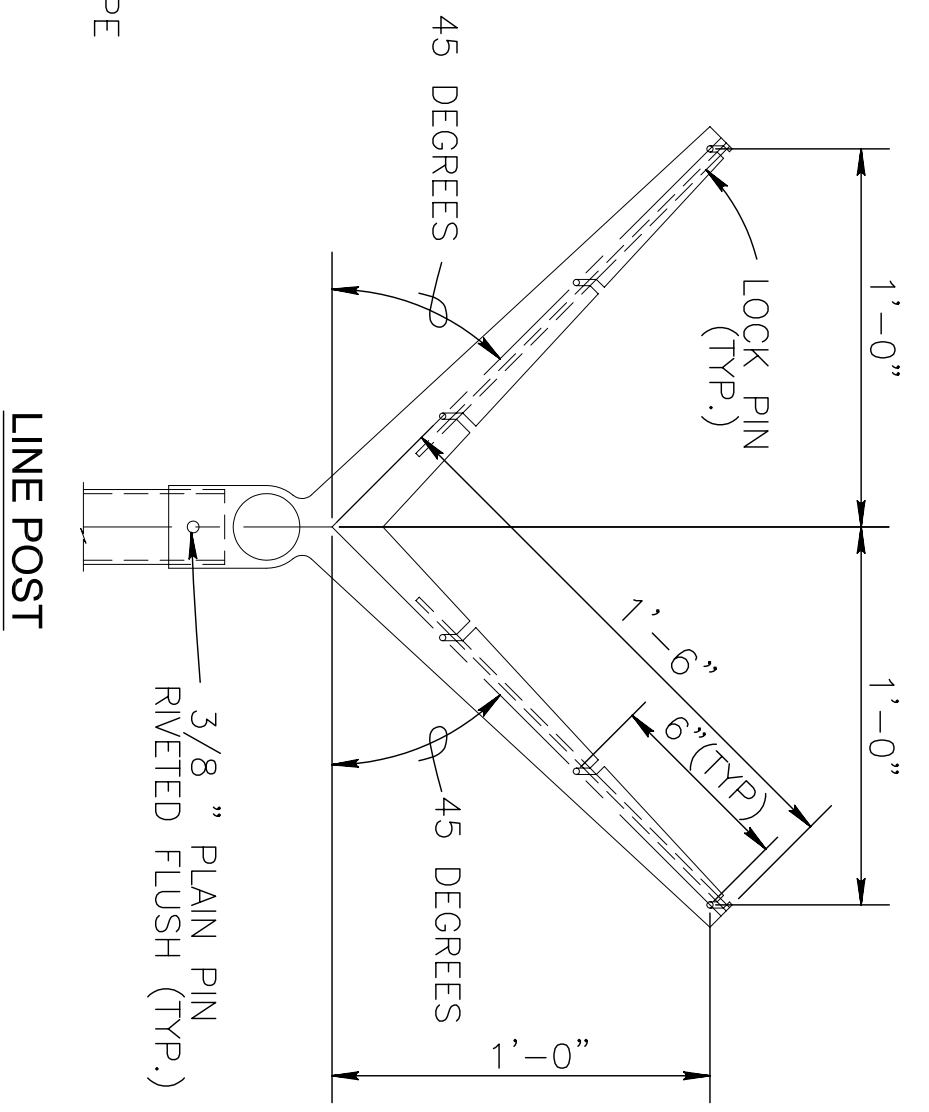
CHAIN LINK FENCE
NOT TO SCALE

CHAIN LINK SECURITY FENCE DETAIL
NOT TO SCALE

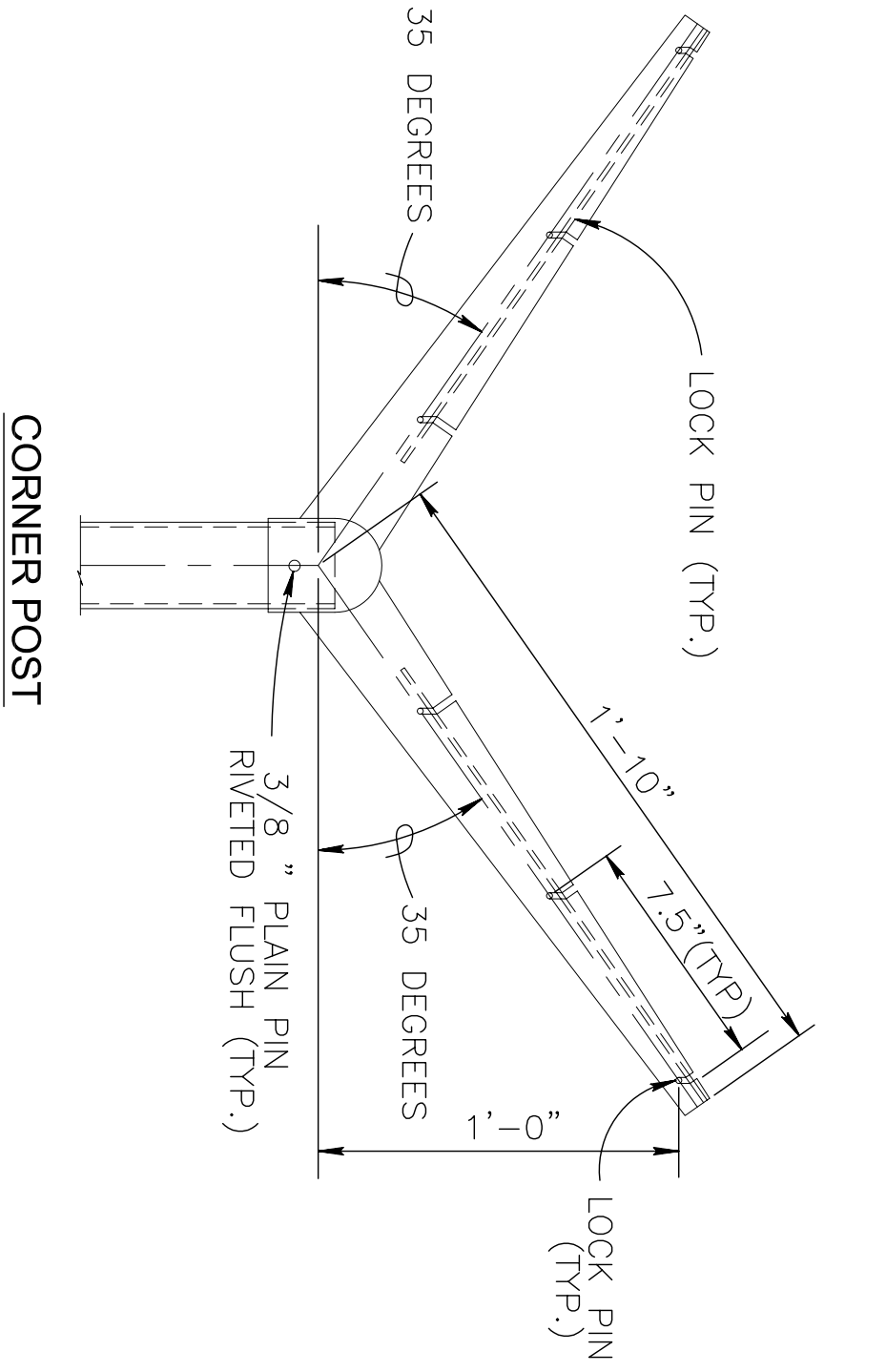


BARBED-TAPE MOUNTING DETAIL
NOT TO SCALE

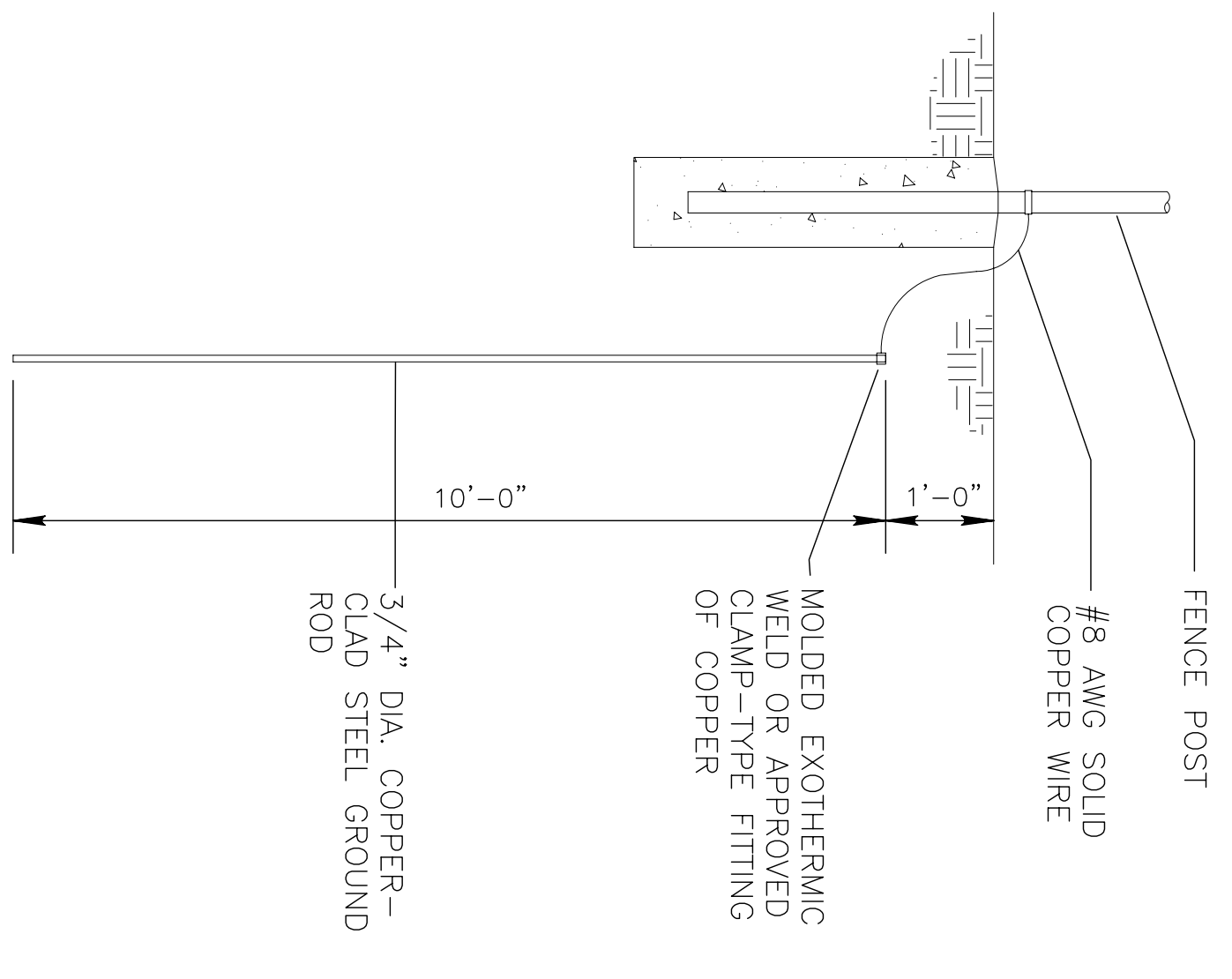
CONNECTION DETAIL
NOT TO SCALE



EXTENSION ARM DETAILS
NOT TO SCALE



CORNER POST



GROUNDING DETAIL
NOT TO SCALE

<p>DEPARTMENT OF THE NAVY NAVAL FACILITIES ENGINEERING COMMAND SOUTHEAST NAVAL AIR STATION JACKSONVILLE JOHN C. STENNIS SPACE CENTER MISSISSIPPI SOF RIVERINE AND COMBATANT CRAFT OPERATIONS FACILITY - PRE-FINAL SITE CIVIL DETAILS</p>	<p>DES. R. WITSE REVISED BY: R. WITSE PUN/INK: T. ARBIB CHECKED: R. WITSE DRAWN: J. LOONIE</p>	<p>EMMETT B. DAMMON JR. REGISTERED PROFESSIONAL ENGINEER NO. 10, 2026 STATE OF MISSISSIPPI SIBOELL, LA 39352 (989) 649-8832</p>	<p>DAMMON ENGINEERING, INC. CORPORATE OFFICE 1000 W. GARDNER BLVD. SUITE 100 SIBOELL, LA 39352 (989) 649-8832</p>	<p>NAVFAC</p>	<table border="1"> <thead> <tr> <th>SYM</th> <th>DESCRIPTION</th> <th>DATE</th> <th>APPR</th> </tr> </thead> <tbody> <tr> <td> </td> <td> </td> <td> </td> <td> </td> </tr> </tbody> </table>	SYM	DESCRIPTION	DATE	APPR				
SYM	DESCRIPTION	DATE	APPR										