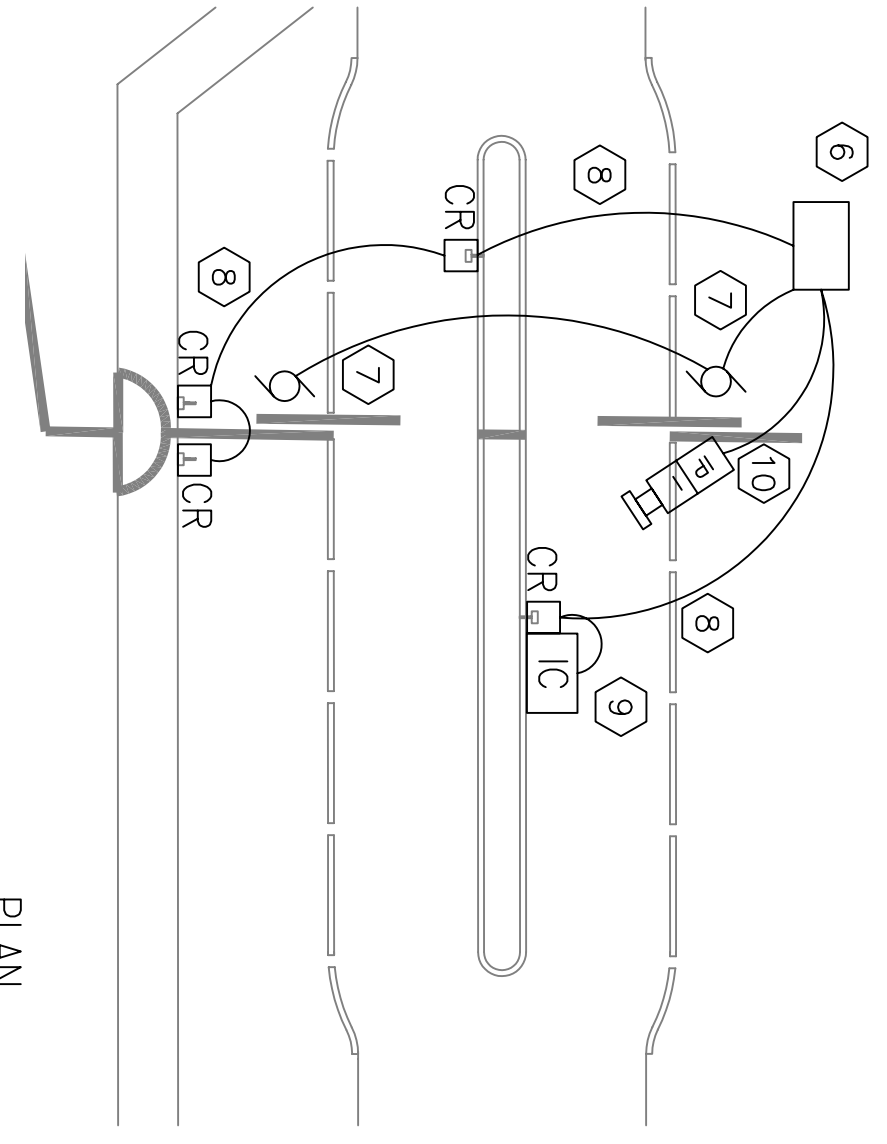


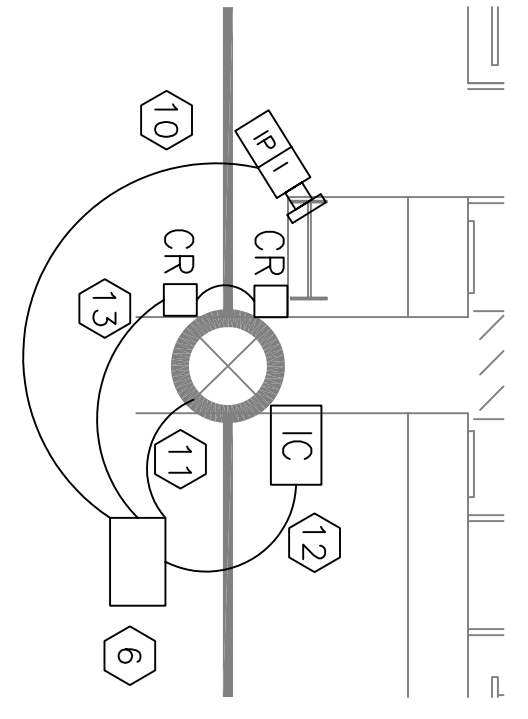
SITE PLAN - SPECIAL SYSTEMS
SCALE: 1"=40'-0"
0 20' 40' 80'

PLAN
NORTH



DETAIL - VEHICLE GATES
SCALE: 1/16"=1'-0"
0 8' 16' 32'

PLAN
NORTH



DETAIL - PEDESTRIAN GATE
SCALE: 1/16"=1'-0"
0 8' 16' 32'

PLAN
NORTH

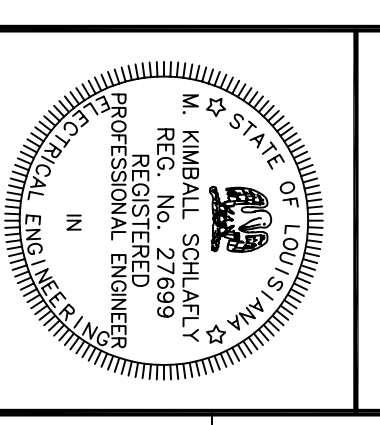
SPECIFIC NOTES THIS SHEET:

- 1 6-4"C. CONCRETE ENCASED. SEE SHEET 22.4 FOR CONTINUATION.
- 2 CONCRETE MANHOLE, 6'X12', WITH H2O CAST IRON COVER MARKED COMMUNICATIONS.
- 3 6-4"C AND 4-2"C ROUTED INTO BUILDING AND TERMINATING IN SECOND FLOOR TEL/COMM ROOM #202. SEE SHEET ES.1 FOR FURTHER DETAILS.
- 4 4-2"C ROUTED TO BLDG 2442. SEE SHEET ES.3 FOR FURTHER DETAILS.
- 5 1-2"C.
- 6 11"X18" PULLBOX, OPEN BOTTOM, POLYMER CONCRETE, HEAVY DUTY COVER MARKED COMMUNICATIONS. QUAZITE PC1118BA18 WITH PC1118HA0012 COVER.
- 7 3/4"C ROUTED TO GATE MOTOR CONTROLLER. REFERENCE GATE SHOP DRAWINGS AND WIRING DIAGRAMS FOR INTERCONNECTION REQUIREMENTS TO CARD READERS. PROVIDE ADDITIONAL CONDUIT FOR SENSOR LOOPS AND LIMIT SWITCHES AS REQUIRED BY GATE INSTALLER.
- 8 3/4"C ROUTED TO CARD READER PEDESTAL. REFERENCE CIVIL DRAWINGS FOR PEDESTAL DETAILS.
- 9 MOUNT INTERCOM STATION ON TOP OF CARD READER PEDESTAL. PROVIDE 3/4"C INTO PEDESTAL BASE.
- 10 3/4"C ROUTED TO CCTV CAMERA MOUNTED ON TOP OF FENCE.
- 11 3/4"C ROUTED TO PEDESTRIAN GATE POWER SUPPLY FOR ELECTRIC STRIKE. PROVIDE RELAY AND INTERCONNECTION AS REQUIRED TO RELEASE STRIKE.
- 12 3/4"C ROUTED TO INTERCOM STATION MOUNTED NEXT TO CARD READER ON PEDESTRIAN GATE.
- 13 3/4"C ROUTED TO CARD READER MOUNTED ON PEDESTRIAN GATE.

PRE-FINAL SUBMISSION
MAY 15, 2009
NOT FOR CONSTRUCTION

SYM	DESCRIPTION	DATE	APPR

SCHLAFLY ENGINEERING LLC
121 SOUTH GENOIS STREET
NEW ORLEANS, LA 70119
PH: 504-885-1447
FX: 504-885-1983
M. KIMBALL SCHLAFLY, P.E.
LA REG 27699



DES: K. SCHLAFLY / DRW: K. SCHLAFLY
REVIEWED BY: R. WILISE
P.N./CHK: T. ARMBR
CHIEF ENGINEER: P. DAMON

DEPARTMENT OF THE NAVY
NAVAL FACILITIES ENGINEERING COMMAND
NAVAL FACILITIES ENGINEERING COMMAND SOUTHEAST
NAVAL AIR STATION JACKSONVILLE
MISSISSIPPI
JOHN C. STENNIS SPACE CENTER
SOF RIVERINE AND COMBATANT CRAFT OPERATIONS FACILITY
SITE PLAN - SPECIAL SYSTEMS

CODE ID: NO. N4412 | SIZE: 0
SCALE: AS SHOWN
DRAWING NO.: N4412
SPL. PROJ. NO.:
WORK ORDER NO.:
CONSTR. CONTR. NO.: N62467-05-D-0096
NAVFAC DRAWING NO.:
SHEET: XXX OF XXX

DATE PLOTTED: 01 JUN 2009
E2.3