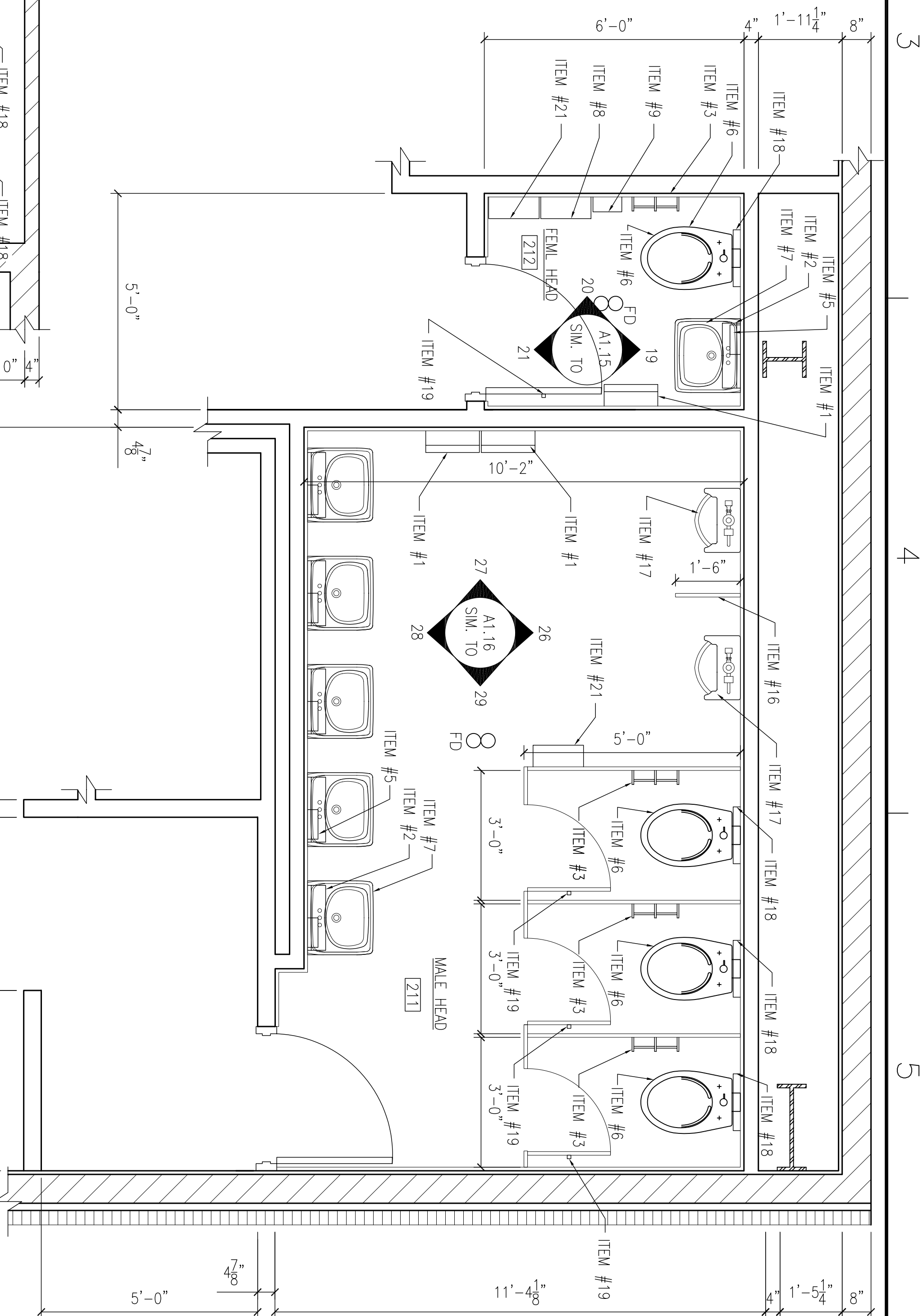
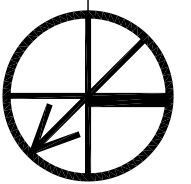
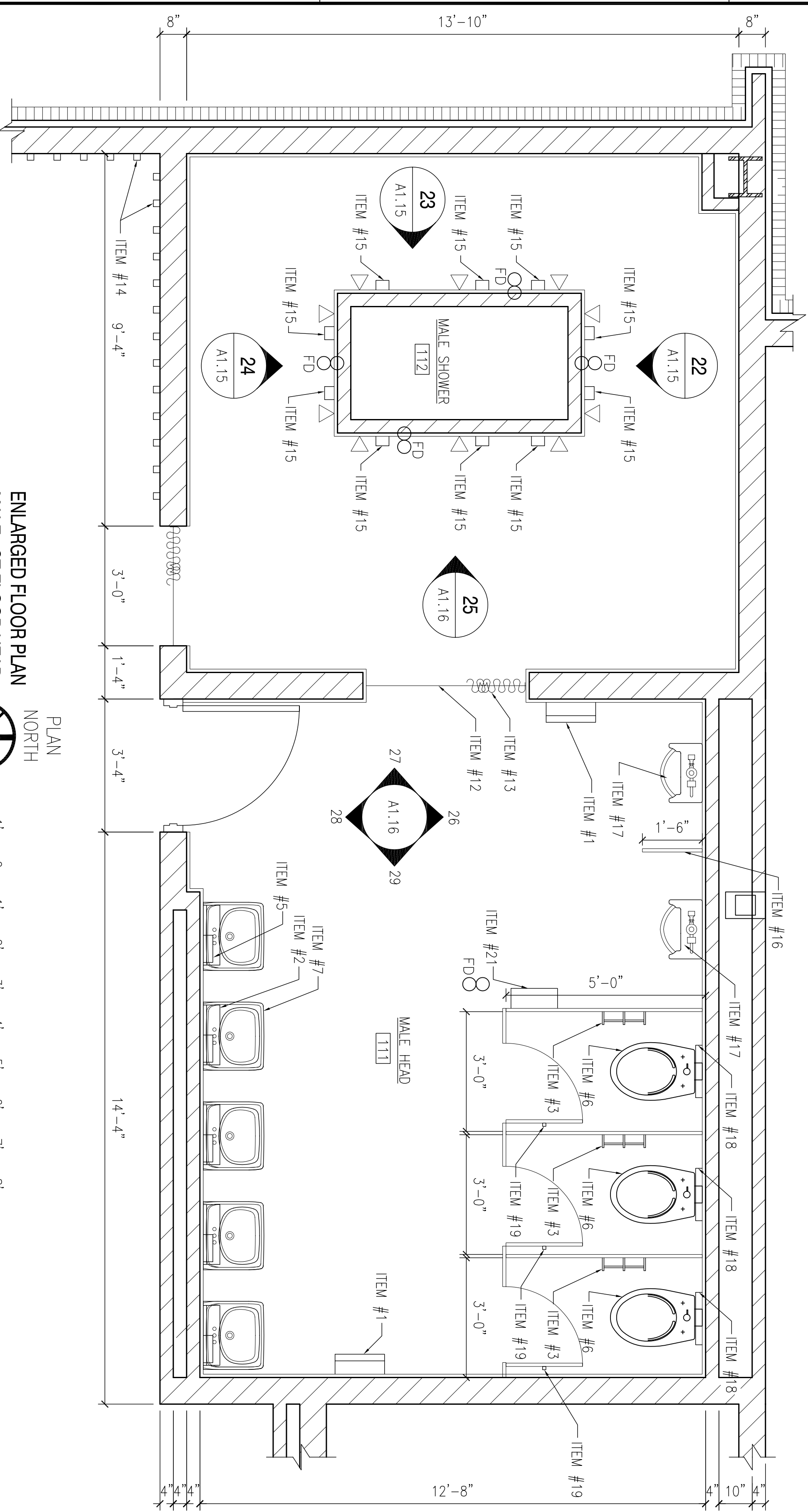
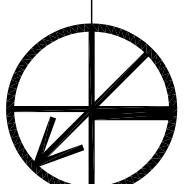


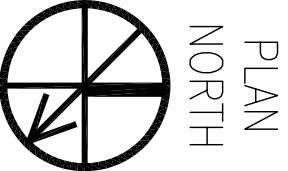
ENLARGED FLOOR PLAN
ADA 1ST FLOOR HEAD/SHOWER
SCALE: 1/2" = 1'-0"



ENLARGED FLOOR PLAN
MALE/FEMALE 2ND FLOOR HEADS
SCALE: 1/2" = 1'-0"



ENLARGED FLOOR PLAN
MALE 1ST FLOOR HEAD
SCALE: 1/2" = 1'-0"



- ITEM LIST**
- ITEM #1 - COMBINATION PAPER TOWEL DISPENSER / WASTE RECEPTACLE, MIN. ONE PER SINGLE HEAD AND MIN. 2 PER MULTI-PERSON HEAD, 14 7/8"Wx56"Hx6 1/4"D
 - ITEM #2 - MIRROR WITH INTEGRAL SHELF ABOVE LAVATORY, ONE PER LAVATORY, 18"Wx24"H, SHELF 18"Wx5 1/2"D
 - ITEM #3 - TOILET TISSUE DISPENSER, ONE PER TOILET, 13"Wx2"Hx3-7/8"D
 - ITEM #4 - GRAB BAR, AT ACCESSIBLE TOILET
 - ITEM #5 - SOAP DISPENSER, ONE PER LAVATORY, 8 3/16"Wx4 7/8"Hx2 7/8"D
 - ITEM #6 - FLUSH VALVE WATER CLOSETS; ACCESSIBLE ON FIRST FLOOR, ONLY
 - ITEM #7 - WALL HUNG LAVATORY, ACCESSIBLE ON FIRST FLOOR, ONLY
 - ITEM #8 - SANITARY NAPKIN DISPENSER, ONE PER FEMALE HEAD, 12 1/2"Wx26 3/8"Hx6"D
 - ITEM #9 - SANITARY NAPKIN DISPOSAL UNIT, ONE PER FEMALE HEAD, 8"Wx11 1/2"Hx4 1/8"D
 - ITEM #10 - GRAB BAR AT ACCESSIBLE SHOWER
 - ITEM #11 - L-SHAPED BARRIERIC SHOWER SEAT, 32"x22 1/2"
 - ITEM #12 - SHOWER ROD
 - ITEM #13 - SHOWER CURTAIN
 - ITEM #14 - SINGLE ROBE HOOK, 2 1/8"Wx2"D
 - ITEM #15 - SOAP DISH, 3 15/16"Wx2 7/8"D
 - ITEM #16 - TOILET PARTITIONS AND URINAL SCREENS, ONE PER TOILET/URINAL IF MULTIPLE FIXTURES
 - ITEM #17 - FLUSH VALVE URINAL, ONE ACCESSIBLE ON FIRST FLOOR
 - ITEM #18 - SEAT COVER DISPENSER, 15 3/4"Wx11"Hx2"D
 - ITEM #19 - HOOK FOR BACK OF DOOR IN TOILET AREAS
 - ITEM #20 - FULL SIZE ANGLE FRAME MIRROR, 24"Wx60"H
 - ITEM #21 - CLIP BOARD HOLDER

RECORD DRAWING
LETTER DATED -
5-27-10



<p>DEPARTMENT OF THE NAVY NAVAL FACILITIES ENGINEERING COMMAND SOUTHEAST NAVAL AIR STATION JACKSONVILLE MISSISSIPPI</p> <p>JOHN C. STENNIS SPACE CENTER SOF RIVERINE AND COMBATANT CRAFT OPERATIONS FACILITY - PRE-FINAL ENLARGED FLOOR PLAN MALE/FEMALE HEADS</p>	<p>DES. R. WITSE DRAW. J. MIFANAV CHECKED BY: R. WITSE PUN/INK. T. JARRIS CHIEF ENGINEER, P. DAMMON</p>	<p>EMMETT B. DAMMON LICENSED PROFESSIONAL ENGINEER STATE OF MISSISSIPPI 9862</p>	<p>DAMMON ENGINEERING, INC. CHIEF ENGINEER 1000 W. GARDNER BLVD. SUITE 100 MONROE, LA 70132 (985) 649-5312</p>	<p>NAVFAC</p>	<table border="1"> <tr> <th>SYMBOL</th> <th>DESCRIPTION</th> <th>DATE</th> <th>APPRO</th> </tr> <tr> <td>AS-BUILT CONDITIONS SHOWN</td> <td></td> <td>3-12-10</td> <td>RW</td> </tr> <tr> <td>REVISED AS PER URS COMMENTS 9 OCTOBER 2009</td> <td></td> <td>11-6-09</td> <td>RW</td> </tr> </table>	SYMBOL	DESCRIPTION	DATE	APPRO	AS-BUILT CONDITIONS SHOWN		3-12-10	RW	REVISED AS PER URS COMMENTS 9 OCTOBER 2009		11-6-09	RW
SYMBOL	DESCRIPTION	DATE	APPRO														
AS-BUILT CONDITIONS SHOWN		3-12-10	RW														
REVISED AS PER URS COMMENTS 9 OCTOBER 2009		11-6-09	RW														