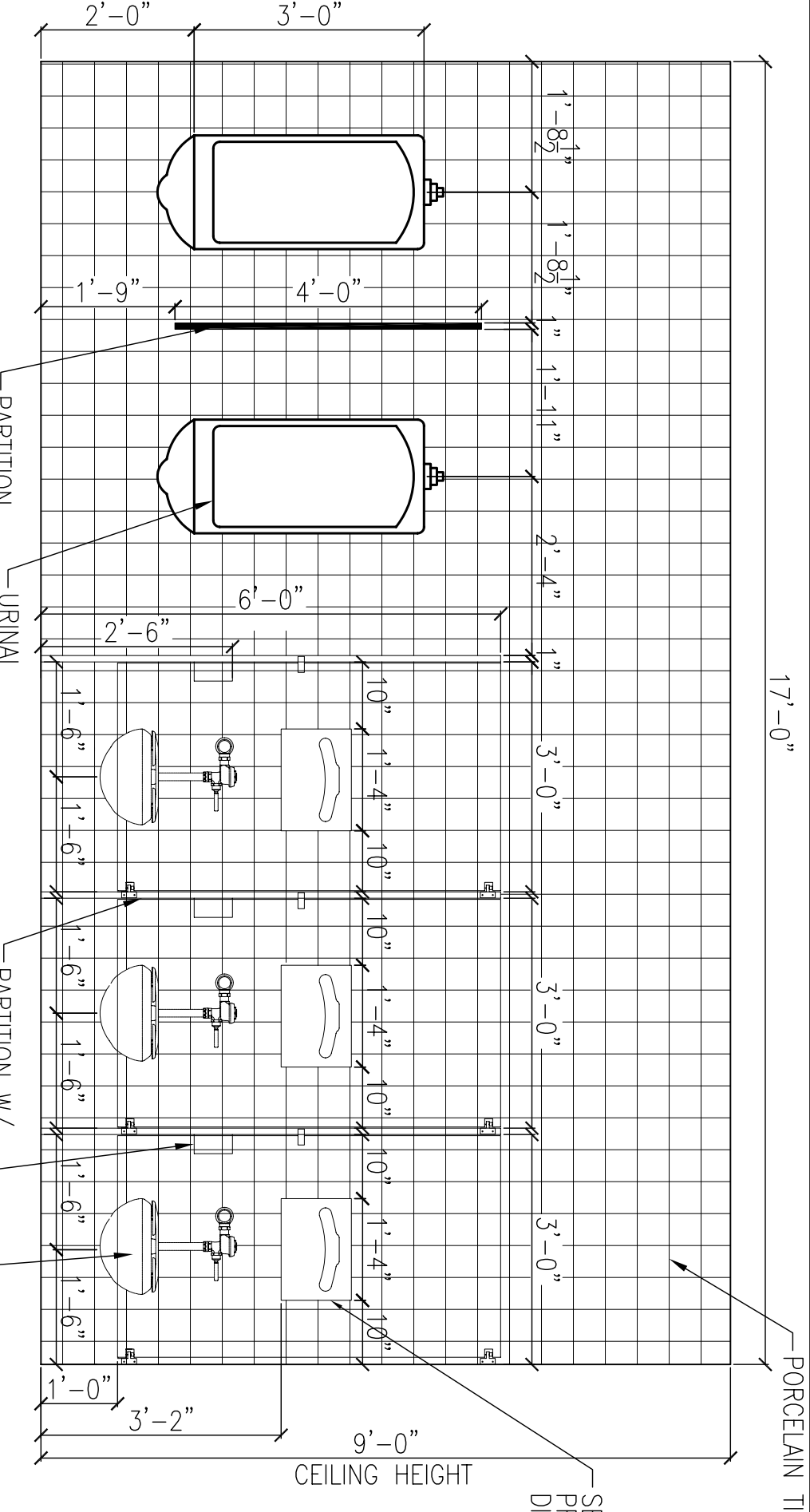
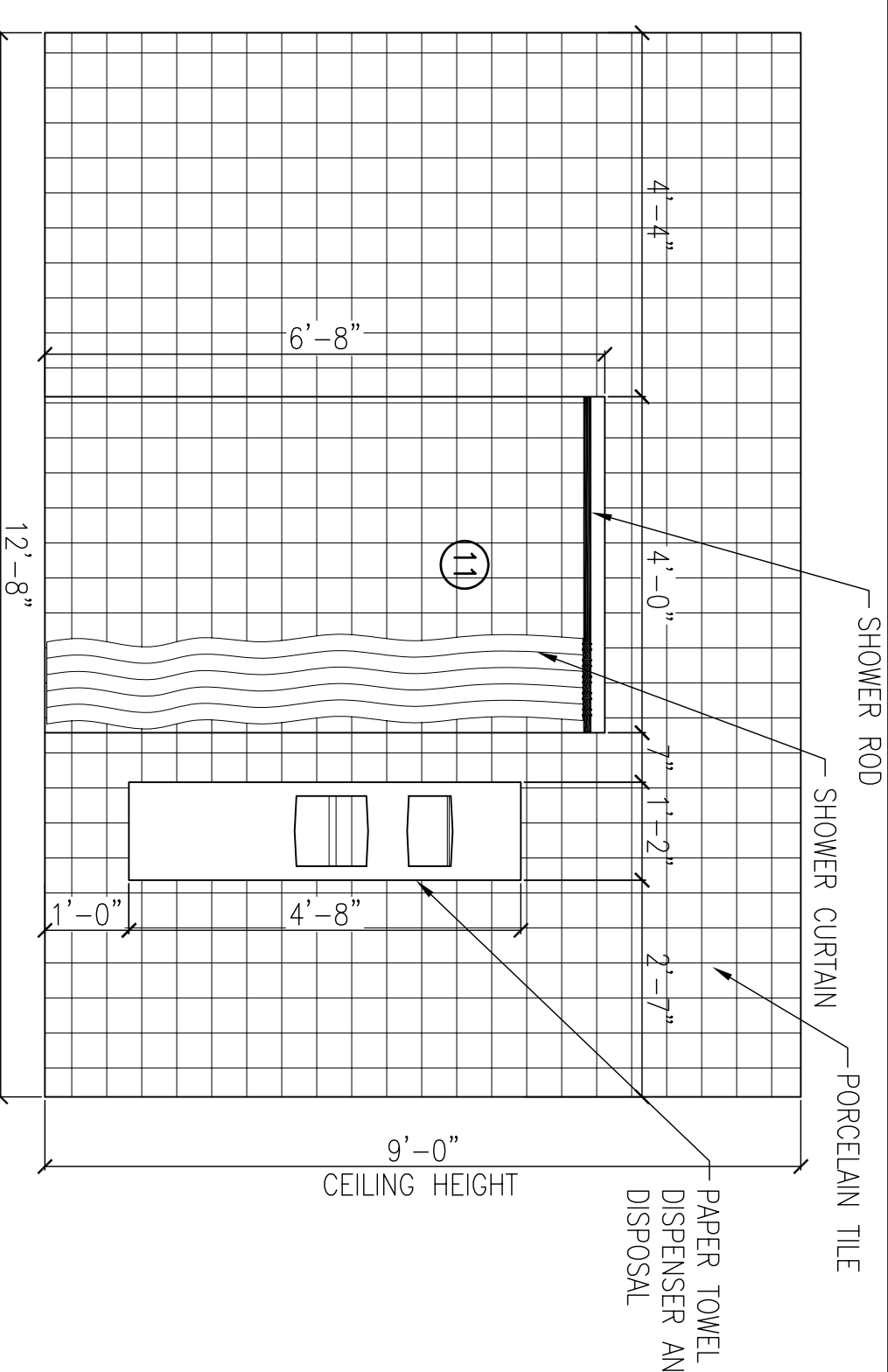


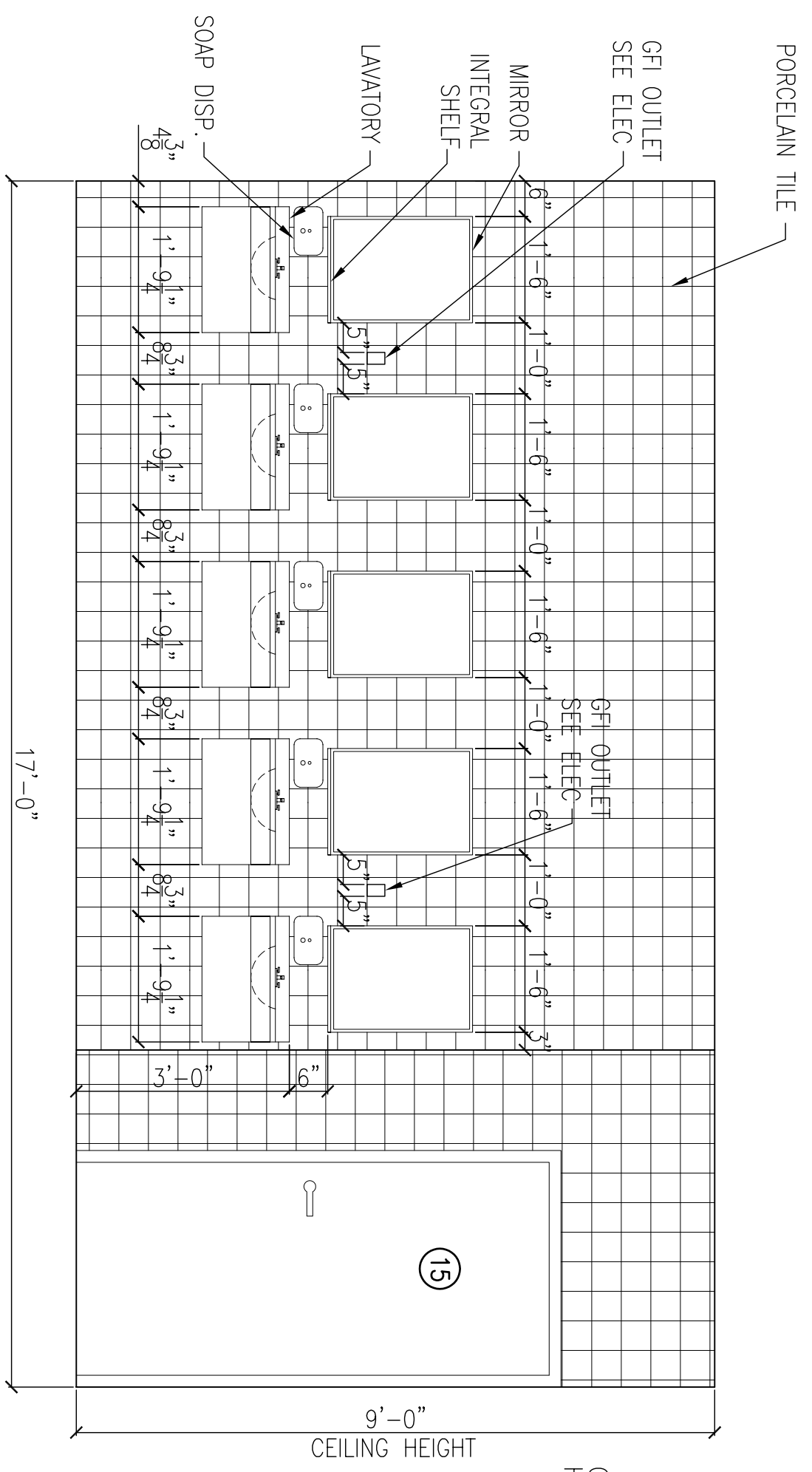
ROOM 112 INTERIOR ELEVATION 25  
1/2" = 1'-0"



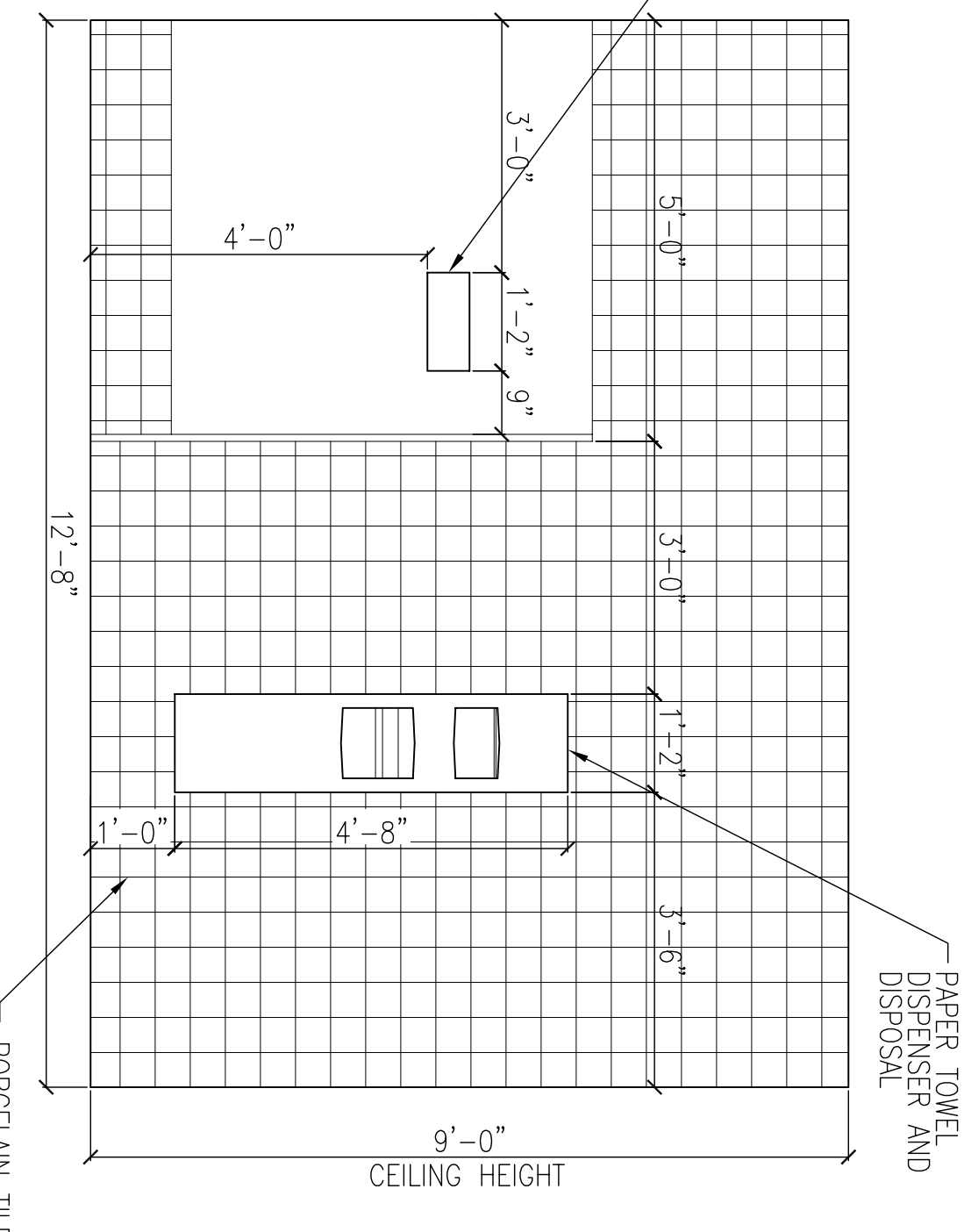
ROOM 111 INTERIOR ELEVATION 26  
1/2" = 1'-0"



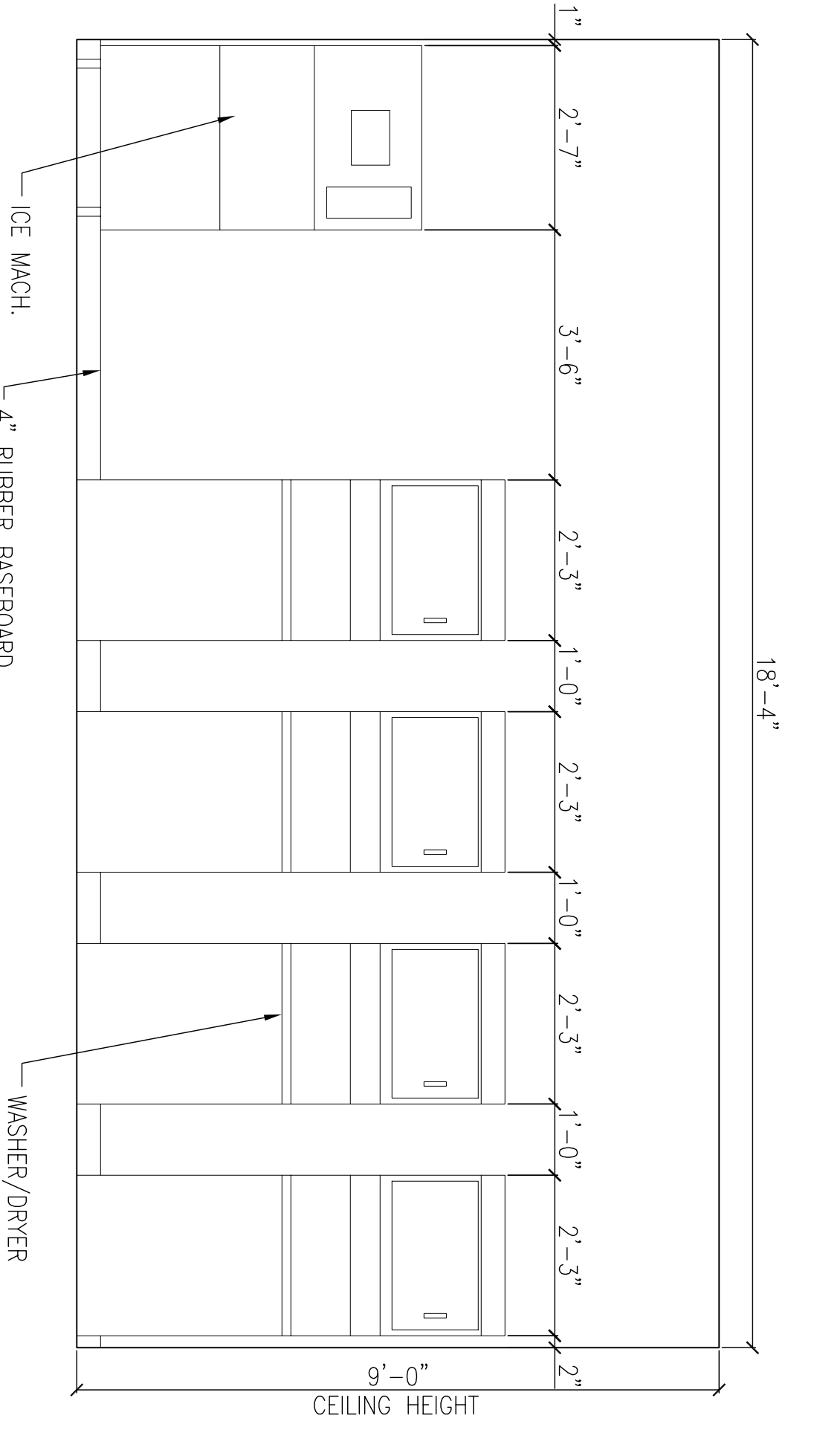
ROOM 112 INTERIOR ELEVATION 27  
1/2" = 1'-0"



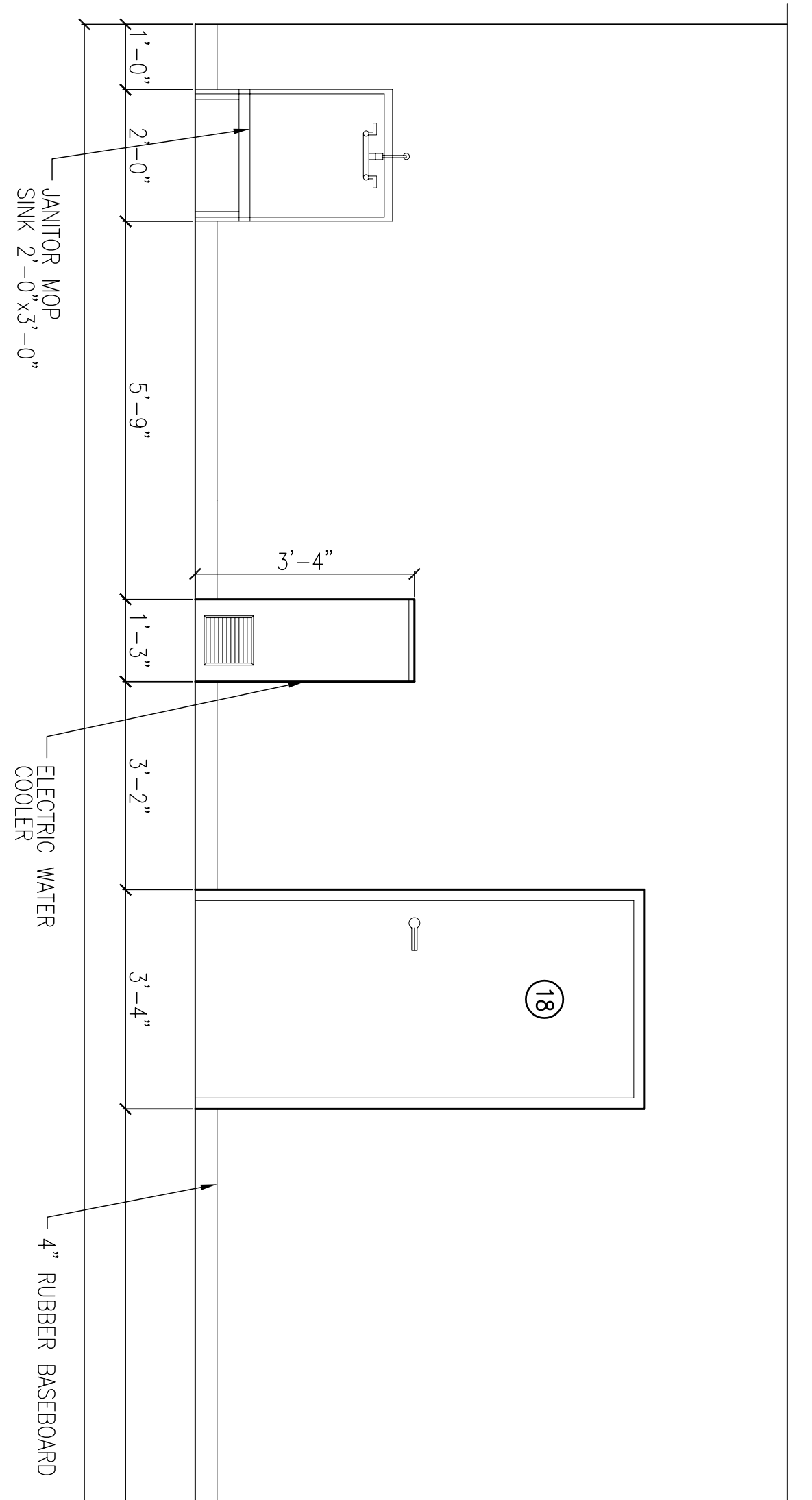
ROOM 111 INTERIOR ELEVATION 28  
1/2" = 1'-0"



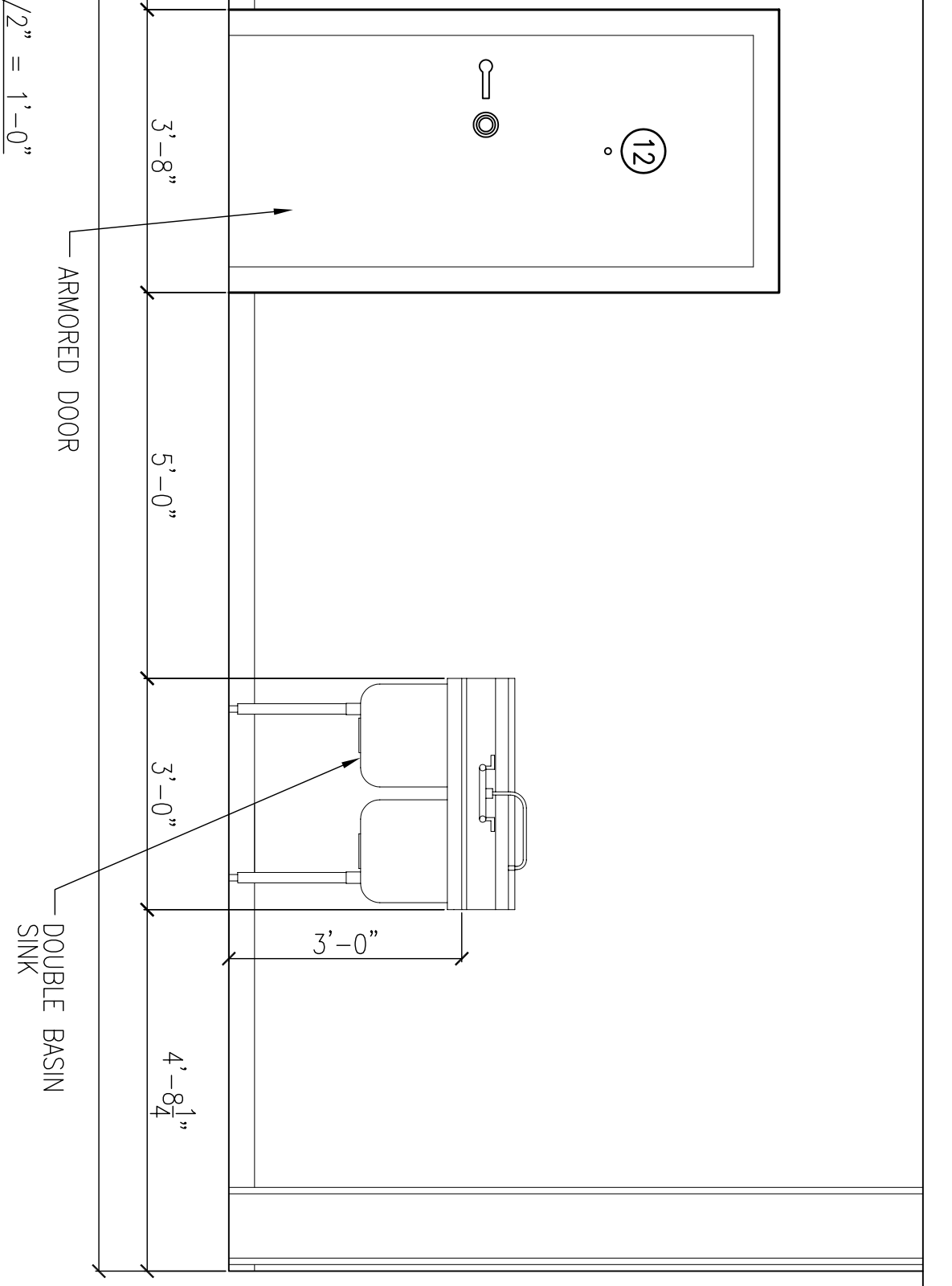
ROOM 111 INTERIOR ELEVATION 29  
1/2" = 1'-0"



ROOM 105 INTERIOR ELEVATION 8  
1/2" = 1'-0"



BLDG 2441 INTERIOR ELEVATION 9  
1/2" = 1'-0"



BLDG 2441 INTERIOR ELEVATION 10  
1/2" = 1'-0"

RECORD DRAWING  
LETTER DATED -  
5-27-10



DEPARTMENT OF THE NAVY <b>NAVAL FACILITIES ENGINEERING COMMAND SOUTHEAST</b> IPT GULF COAST JOHN C. STENNIS SPACE CENTER <b>SOF RIVERINE AND COMBATANT CRAFT OPERATIONS FACILITY - PRE-FINAL</b> MISSISSIPPI <b>BLDG. 2440/2441 INTERIOR ELEVATIONS</b>	DAMMON ENGINEERING, INC. ENGINEERING ARCHITECTURE INTERIOR DESIGN 1000 W. GULF SHORE BLVD. SUITE 100 SLIDELL, LA 70688 (985) 649-8832 ESTABLISHED 1982	EMMETT G. DAMMON LICENSED PROFESSIONAL ENGINEER STATE OF MISSISSIPPI 9662	DESIGNED BY: R. WITTE DRAWN BY: J. THREANI CHECKED BY: T. ARBIB IN CHARGE: P. DAMMON	AS-BUILT REVISED AS PER URS COMMENTS 9 OCTOBER 2009	4-25-10 11-6-09	RW RW	DATE APPR
---	--	--	---	--	--------------------	----------	--------------