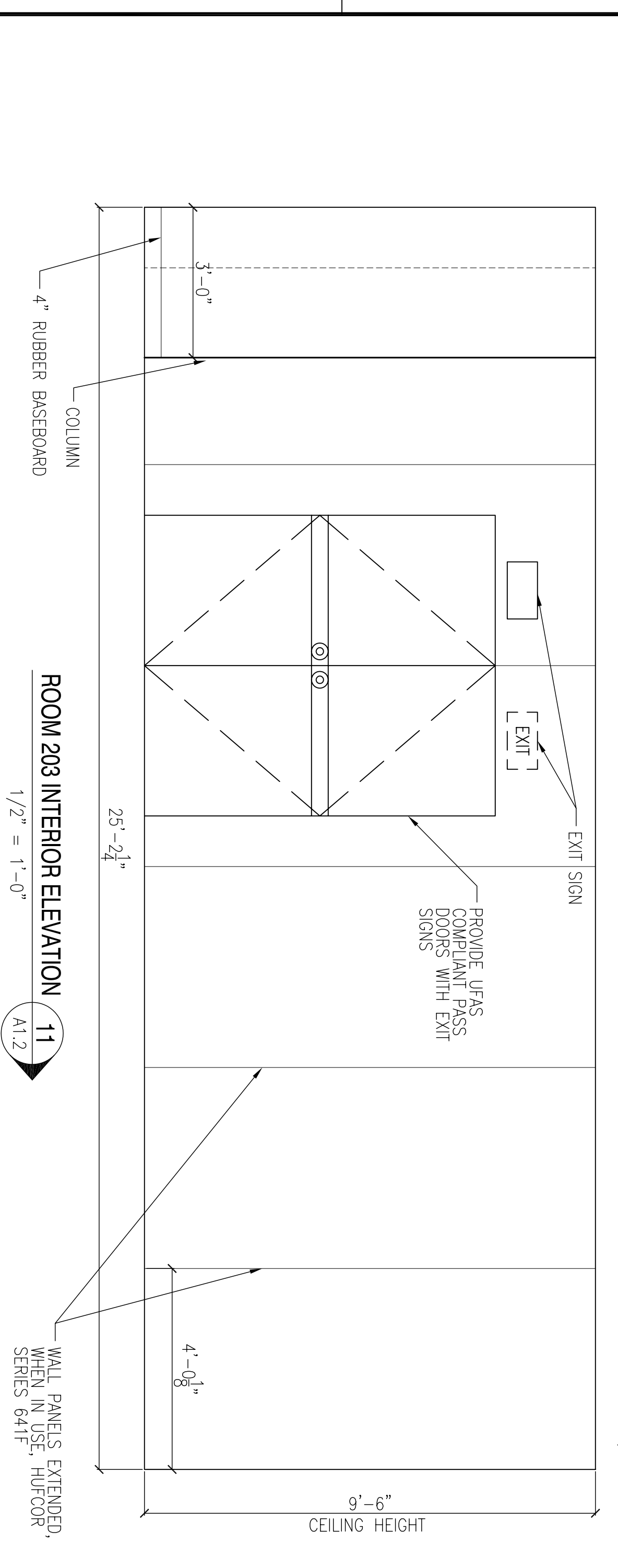
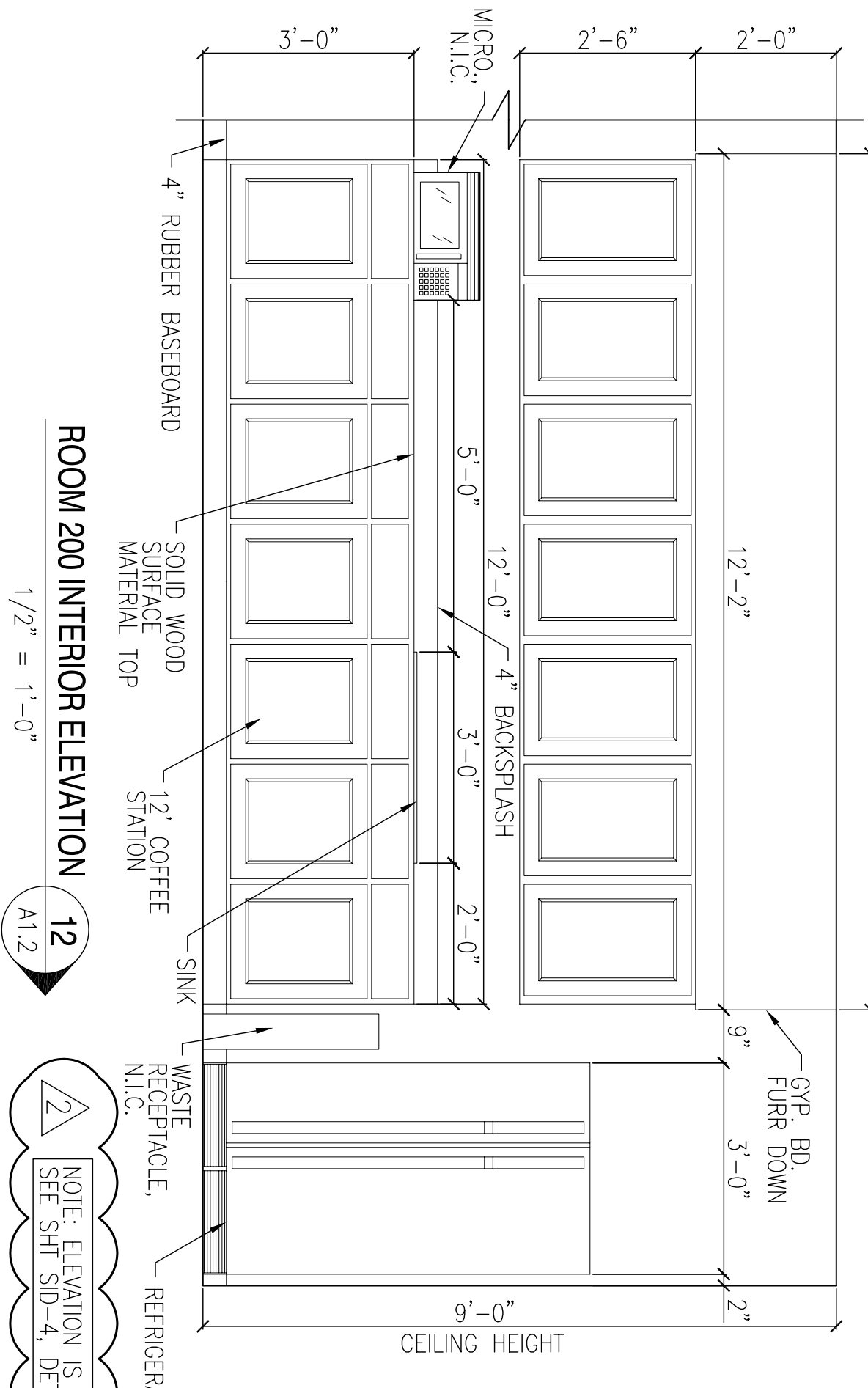


**BLDG 2441 INTERIOR ELEVATION**  
1/2" = 1'-0"  
A1.1

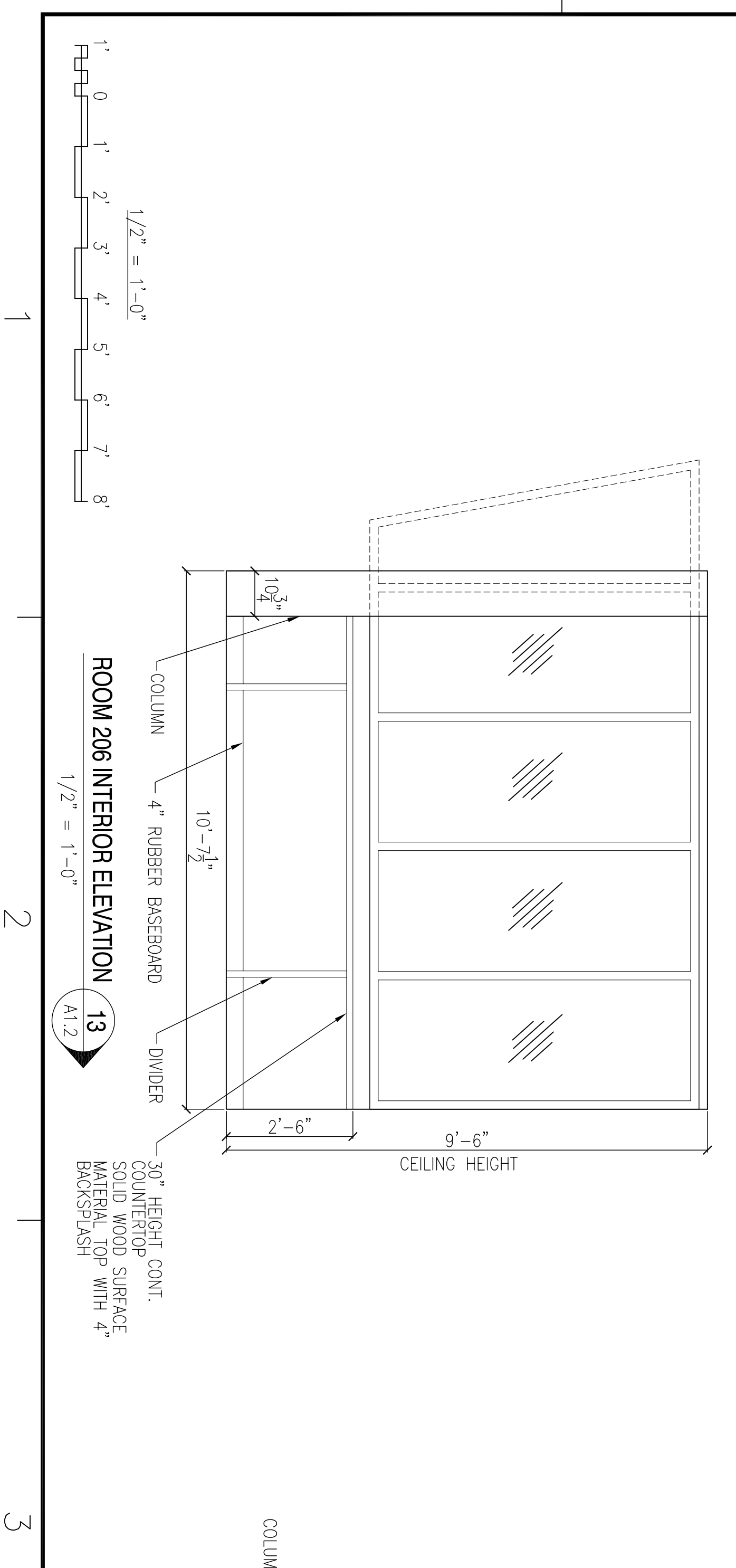


**ROOM 203 INTERIOR ELEVATION**  
1/2" = 1'-0"  
A1.2

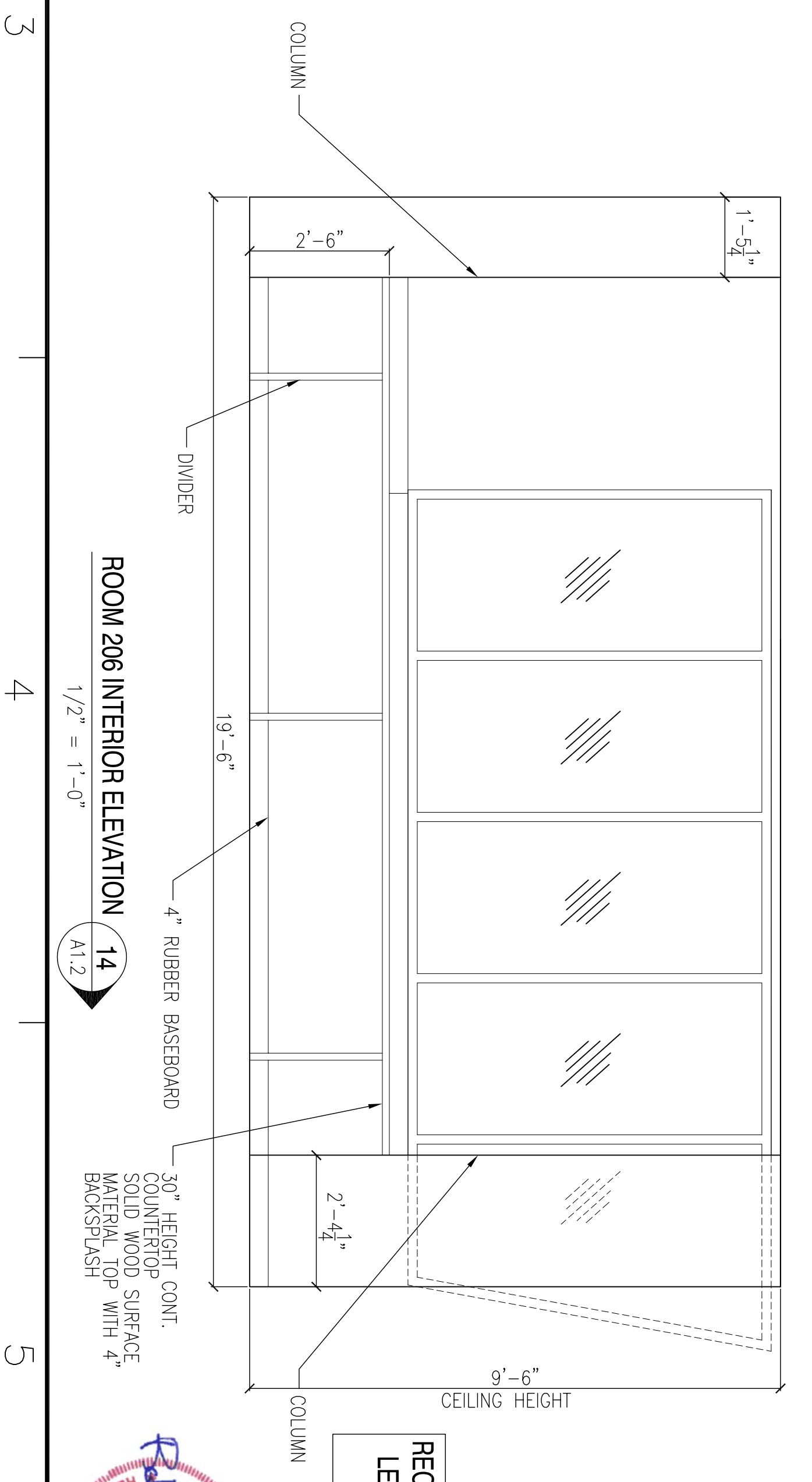


**ROOM 200 INTERIOR ELEVATION**  
1/2" = 1'-0"  
A1.2

NOTE: ELEVATION IS DIAGRAMMATIC;  
SEE SHIT SD-4, DETAIL 4.



**ROOM 206 INTERIOR ELEVATION**  
1/2" = 1'-0"  
A1.2



**ROOM 206 INTERIOR ELEVATION**  
1/2" = 1'-0"  
A1.2

**RECORD DRAWING**  
**LETTER DATED -**  
**5-27-10**

			DEPARTMENT OF THE NAVY NAVAL FACILITIES ENGINEERING COMMAND SOUTHEAST NAVAL AIR STATION JACKSONVILLE JOHN C. STENNIS SPACE CENTER MISSISSIPPI <b>SOF RIVERINE AND COMBATANT CRAFT OPERATIONS FACILITY - PRE-FINAL</b> <b>BLDG. 2440/2441 INTERIOR ELEVATIONS</b>	DESIGNED BY: R. WITSE DRAWN BY: J. MERRIN CHECKED BY: T. ARBIB PROJECT NO. 15026994 SHEET NO. 47 OF 132 DATE: 11-6-09	AS-BUILT CONDITIONS SHOWN REVISED AS PER URS COMMENTS 9 OCTOBER 2009	3-12-10 11-6-09	RW RW
SYM	DESCRIPTION	DATE	APPR				