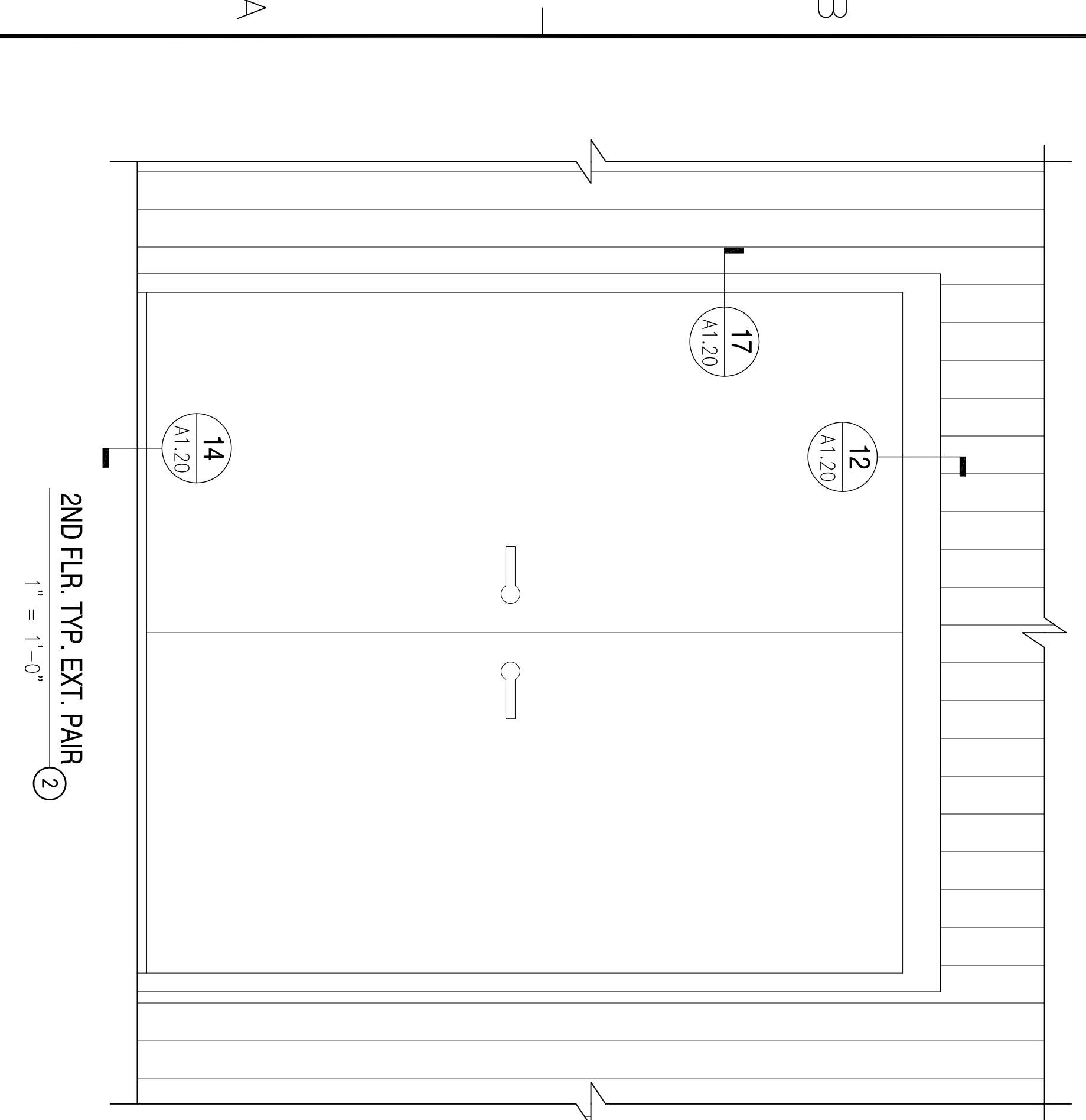


1ST FLR. TYP. EXT. ①
1" = 1'-0"

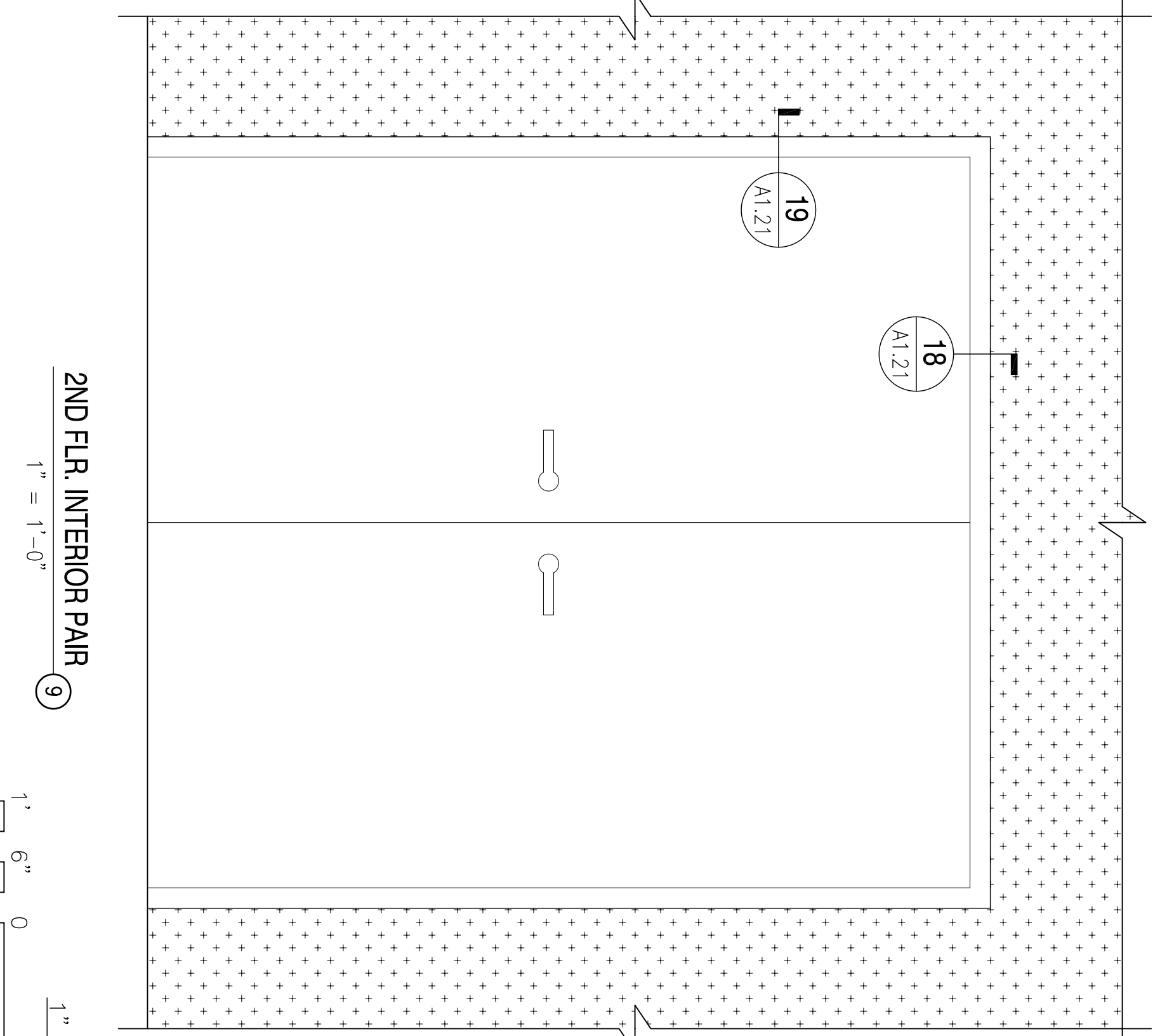
1ST FLR. TYP. EXT. PAIR ③
1" = 1'-0"

1ST FLR. TYP. EXT. SINGLE ④⑤⑥
1" = 1'-0"

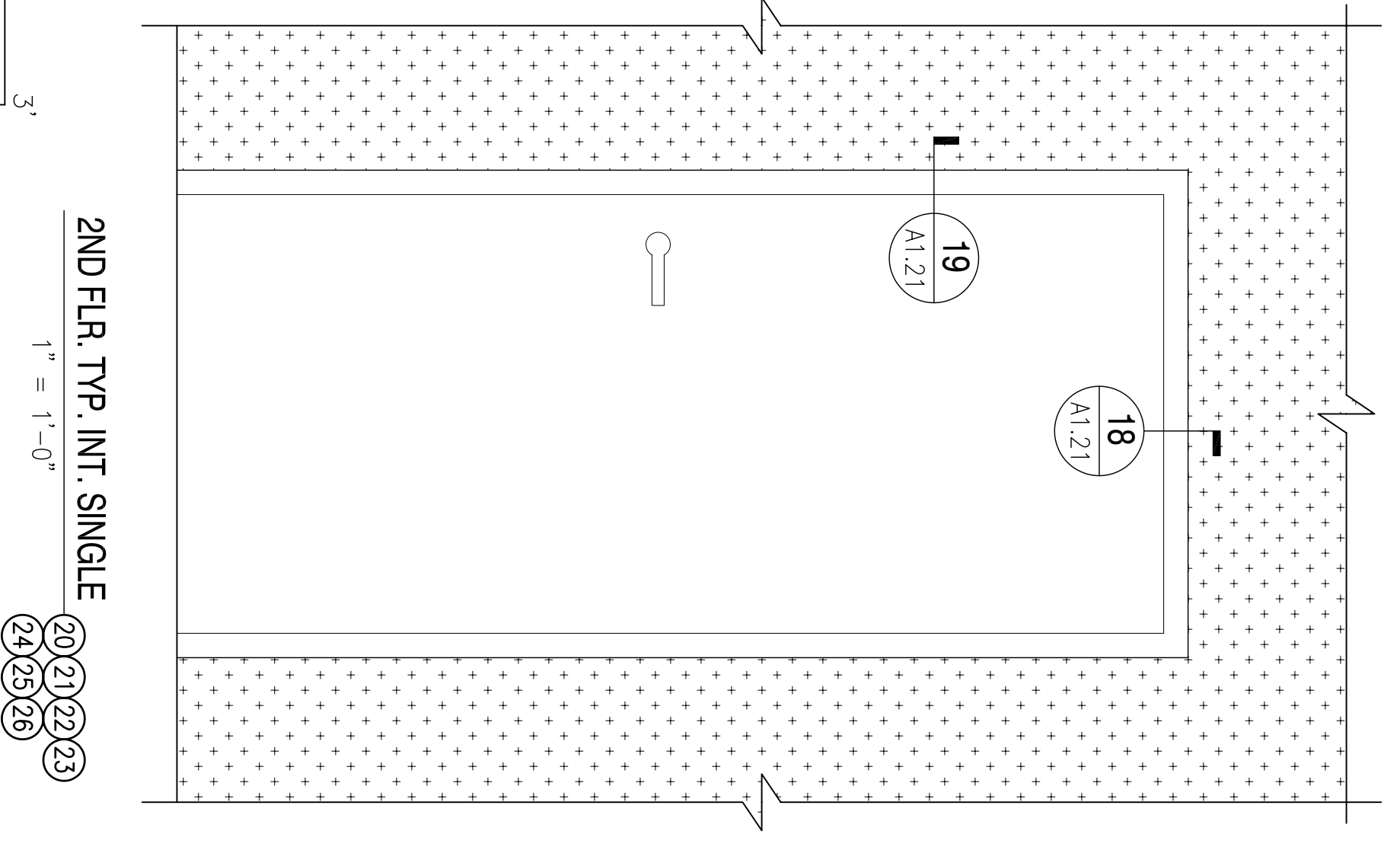
1ST FLR. TYP. INT. INTERIOR ⑬⑭⑮⑯⑰⑱
1" = 1'-0"



2ND FLR. TYP. EXT. PAIR ②
1" = 1'-0"



2ND FLR. INTERIOR PAIR ⑨
1" = 1'-0"



2ND FLR. TYP. INT. SINGLE ⑲⑳㉑㉒㉓
1" = 1'-0"

RECORD DRAWING
LETTER DATED -
5-27-10



DEPARTMENT OF THE NAVY NAVAL FACILITIES ENGINEERING COMMAND SOUTHEAST IPT GULF COAST JOHN C. STENNIS SPACE CENTER MISSISSIPPI SOF RIVERINE AND COMBATANT CRAFT OPERATIONS FACILITY - PRE-FINAL BLDG. 2440/2441 DOOR ELEVATIONS	NAVAL FACILITIES ENGINEERING COMMAND NAVAL AIR STATION JACKSONVILLE MISSISSIPPI	RES. R. WILTSE ENGINEER DRAW. J. MIFANAV PROJECTED BY: R. WILTSE PLAN/CHK. T. ARBIB CHIEF ENGINEER: P. DAMMON	EMMETT G. DAMMON LICENSED PROFESSIONAL ENGINEER STATE OF MISSISSIPPI 9662 DAMMON ENGINEERING, INC. 1000 W. UNIVERSITY BLVD. SUITE 100 SIBOLLA, LA 70458 (985) 649-5312 ESTABLISHED 1982
SCALE: AS SHOWN DRAWING NO. P-2110 STA. PROJ. NO. S10247 WORK ORDER NO. N62467-05-0-0096 CONTR. CENTER NO. 15026985 SHEET 48 OF 132 DATE: 01 JAN 2009	CODE ID. NO. N4412 SIZE: 0 SCALE: AS SHOWN DRAWING NO. P-2110 STA. PROJ. NO. S10247 WORK ORDER NO. N62467-05-0-0096 CONTR. CENTER NO. 15026985 SHEET 48 OF 132 DATE: 01 JAN 2009	SYM AS-BUILT DESCRIPTION DATE 4-25-10 APPR RW	SYM AS-BUILT DESCRIPTION DATE 4-25-10 APPR RW