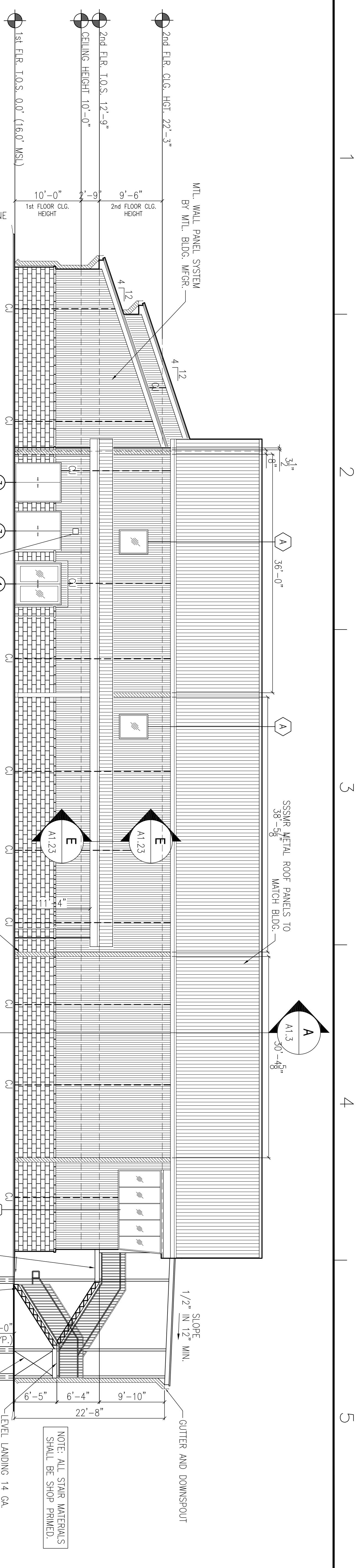
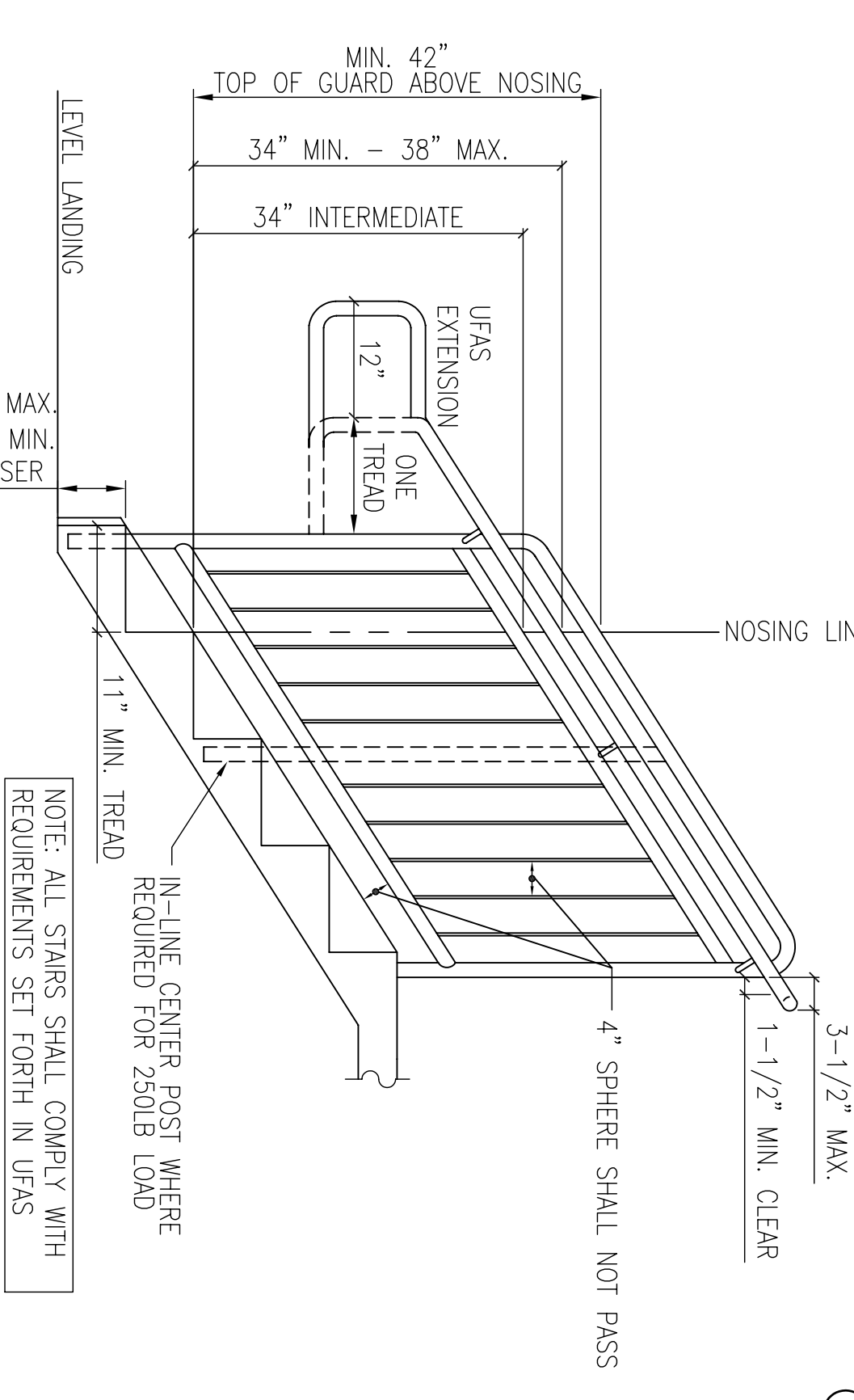


REVDATE:

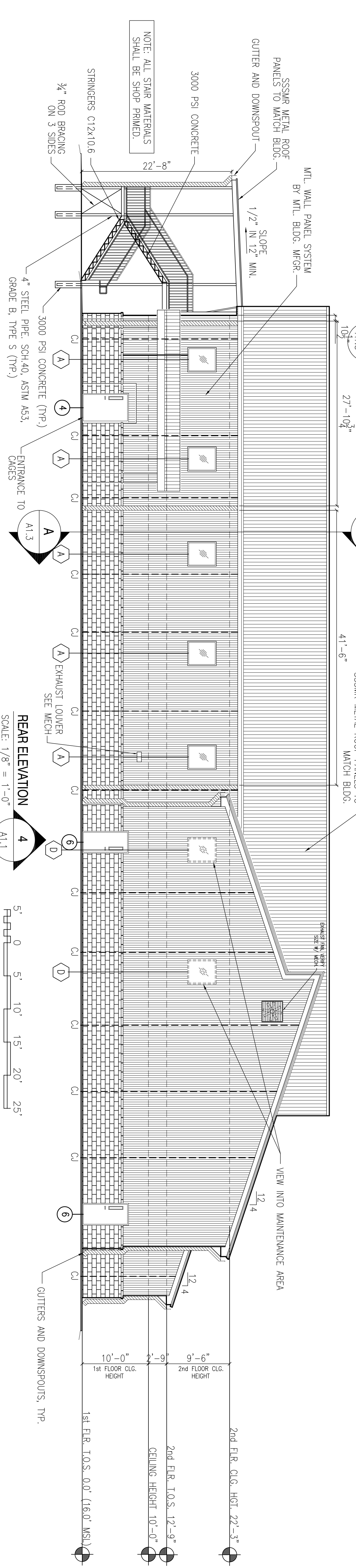
A B C D 1 2 3 4 5



FRONT ELEVATION
SCALE: 1/8" = 1'-0"
A1.1



TYPICAL HANDRAIL / GUARDRAIL DETAIL
SCALE: N.T.S.
A1.3

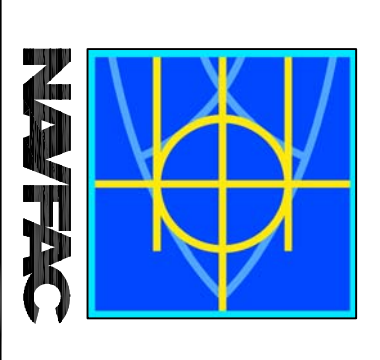


REAR ELEVATION
SCALE: 1/8" = 1'-0"
A1.1

RECORD DRAWING
LETTER DATED -
5-27-10



DAMMON ENGINEERING, INC.
REGISTERED PROFESSIONAL ENGINEER
CHIEF ENGINEER
DAMMON & WILSE
SUITE 100
1001 N. LA 7028
BOZEMAN, LA 70302
(985) 649-5312
REGISTERED 4/2009



SYM	DESCRIPTION	DATE	APPR
	AS-BUILT	3-12-10	RW
	REVISED AS PER URS COMMENTS 9 OCTOBER 2009	11-16-09	RW

DEPARTMENT OF THE NAVY
NAVAL FACILITIES ENGINEERING COMMAND
NAVAL FACILITIES ENGINEERING COMMAND SOUTHEAST
NAVAL AIR STATION JACKSONVILLE
MISSISSIPPI
JOHN C. STENNIS SPACE CENTER
SOF RIVERINE AND COMBATANT
CRAFT OPERATIONS FACILITY - PRE-FINAL
OPS./MAINT. BLDG. 2440/2441 ELEVATIONS

DESIGNER: R. WILSE
DRAWN: J. JEFFANY
CHECKED: T. JARVIS
CHIEF ENGINEER: P. DAMMON

CODE ID: NO. N4412
SCALE: AS SHOWN
SHEET NO.: P-210
WORK ORDER NO.: 510247
CONTRACT NO.: N62467-05-0-0096
NAVFAC DRAWING NO.: 15026886
DATE: 09 OF 132