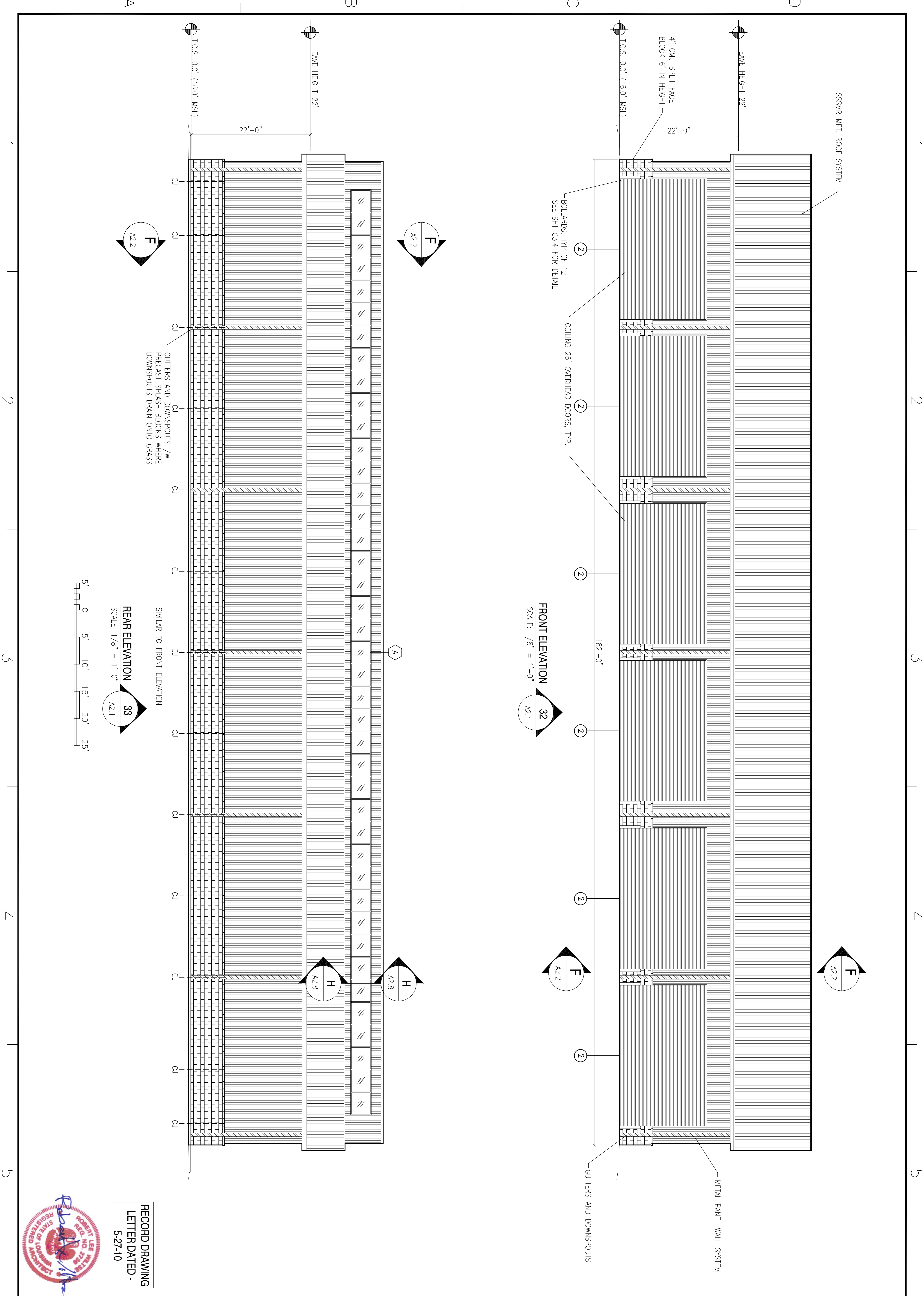


REVDATE: _____



REAR ELEVATION
 A2.1
 SCALE: 1/8" = 1'-0"

FRONT ELEVATION
 A2.1
 SCALE: 1/8" = 1'-0"

RECORD DRAWING
 LETTER DATED -
 5-27-10



DEPARTMENT OF THE NAVY NAVAL FACILITIES ENGINEERING COMMAND SOUTHEAST NAVAL AIR STATION JACKSONVILLE MISSISSIPPI SOF RIVERINE AND COMBATANT CRAFT OPERATIONS FACILITY - PRE-FINAL BOAT STORAGE BLDG. 2442 ELEVATIONS		DAMMON ENGINEERING, INC. ENGINEER 1000 PINEAPPLE CIRCLE DARMON, LA 70028 (985) 649-4812 <small>ESTABLISHED 4-2009</small>				AS-BUILT REVISED AS PER URS COMMENTS 9 OCTOBER 2009	4-25-10 11-6-09	RW RW
DESIGNED BY: R. WITSE DRAWN BY: J. THANNY CHECKED BY: T. ARBIB PROJECT: P. DAMON	EMMETT B. DAMMON LICENSED PROFESSIONAL ENGINEER STATE OF MISSISSIPPI 9662	JOHN C. STENNIS SPACE CENTER MISSISSIPPI		SYM	DESCRIPTION	DATE	APPR	

DRAWING REVISION: 01 JAN 2009
 A2.5
 SHEET 38 OF 132