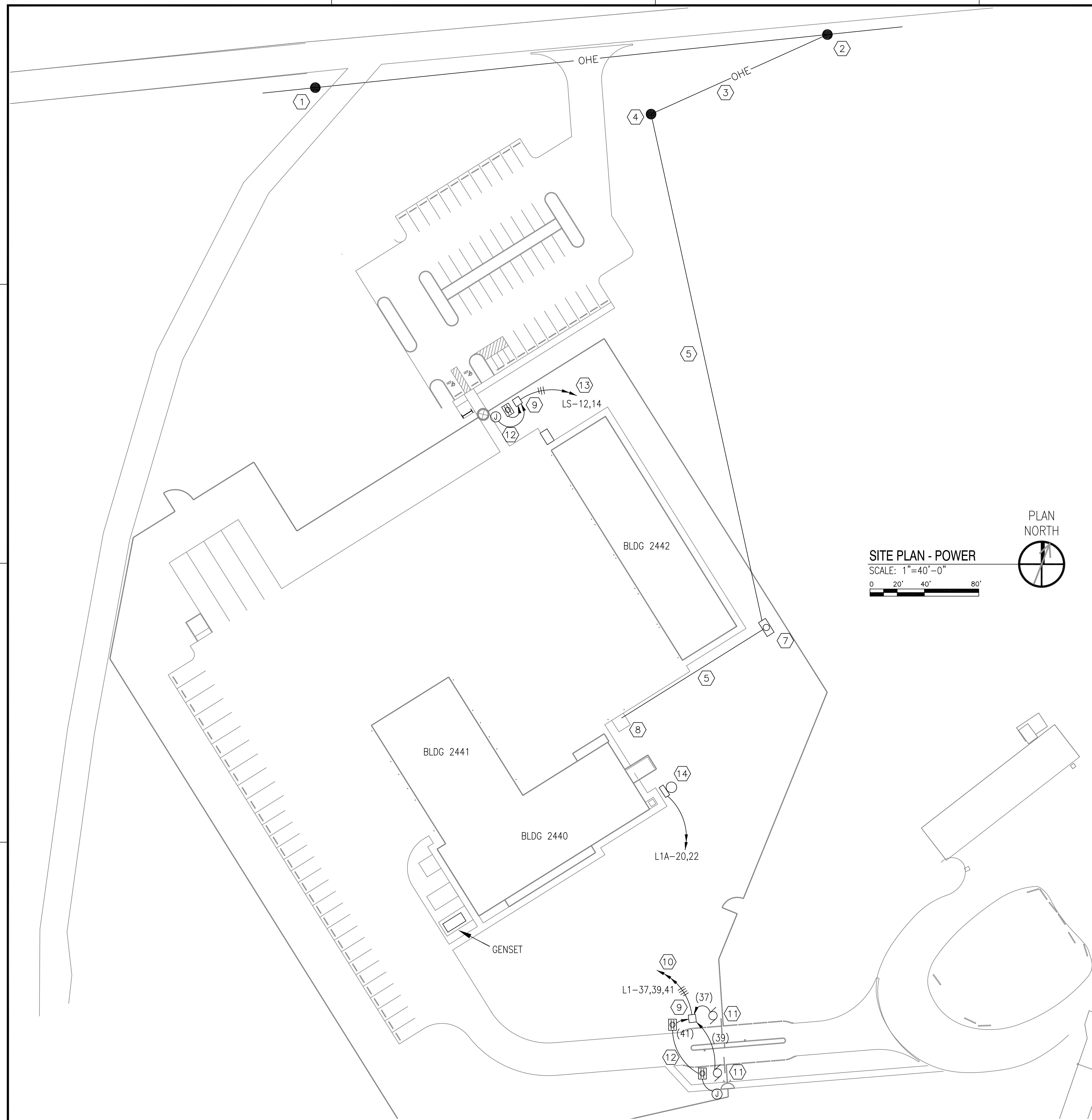
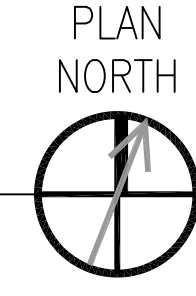


REVDATE: FILE NAME: C:\Schlafly\ENGR 08010_SOF Riverine Drawings\Elec-5-As--buils-E2.1.dwg LAYOUT NAME: E2.2 PLOTTED: Friday, May 28, 2010 - 2:54pm


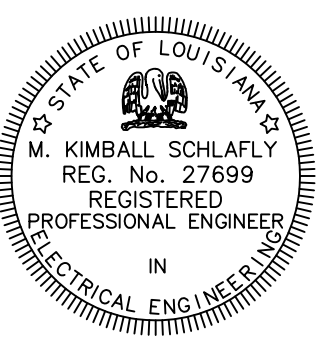


SITE PLAN - POWER
 SCALE: 1"=40'-0"
 0 20' 40' 80'



- SPECIFIC NOTES THIS SHEET:
- ① EXISTING 15KV POWER POLE.
 - ② EXISTING 15KV POWER POLE. ADD NEW BRACKETS FOR NEW OVERHEAD CONDUCTORS ROUTED TO NEW TERMINAL POLE.
 - ③ NEW 3-PHASE OVERHEAD CONDUCTORS. #2 AWG ACSR MOUNTED ON 25KV INSULATORS PER STENNIS STANDARDS, WITH STATIC LINE AT TOP.
 - ④ NEW WOOD TERMINAL POLE, MATCHING EXISTING WOOD POLES ON LOWER GAINESVILLE ROAD. INSTALL FUSED CUT-OUTS (20A) AND LIGHTNING ARRESTORS. PROVIDE 2-4" GRS RISERS, WITH 1-4"C CONTAINING 3-#1/0 AWG, TYPE MV-105, 15 KV CONDUCTORS, 133% INSULATION, AND TYPE EPR JACKET. TERMINATE TO LOAD SIDE OF FUSED CUT-OUTS.
 - ⑤ 2-4"C CONCRETE ENCASED: 3-#1/0 AWG, TYPE MV-105, 15 KV CONDUCTORS, 133% INSULATION, AND TYPE EPR JACKET IN 1-4"C WITH 1-4"C SPARE.
 - ⑥ NOT USED.
 - ⑦ CONCRETE MANHOLE, 6'X8', WITH H2O CAST IRON COVER MARKED HIGH VOLTAGE. LOOP CONDUCTORS IN MANHOLE ON RACKING HARDWARE.
 - ⑧ 300 KVA PAD-MOUNT TRANSFORMER. TURN UP CONDUITS INTO HV COMPARTMENT. SEE DETAIL SHEET E1.5 FOR FURTHER INFORMATION.
 - ⑨ 11"X18" PULLBOX, OPEN BOTTOM, POLYMER CONCRETE, HEAVY DUTY COVER MARKED ELECTRIC. QUAZITE PC1118BA18 WITH PC1118HA0017 COVER.
 - ⑩ 1"C: 4-#8 AWG AND 1-#10 GRD.
 - ⑪ 3/4"C: 2-#10 AWG AND 1-#10 GRD. PROVIDE FINAL CONNECTION TO MOTOR CONTROLLER.
 - ⑫ 3/4"C: 2-#10 AWG AND 1-#10 GRD. PROVIDE FINAL CONNECTION TO PEDESTRIAN GATE POWER SUPPLY AND WETHERPROOF GFCI RECEPTACLES.
 - ⑬ 1"C: 3-#8 AWG AND 1-#10 GRD.
 - ⑭ 1"C: 2-#10 AWG AND 1-#10 GRD. PROVIDE FINAL CONNECTIONS TO LIFT STATION MOTOR CONTROLLER WITH INTEGRAL DISCONNECT.

RECORD DRAWING
LETTER DATED
5-27-10

AS-BUILT REVISIONS	DATE	SYN	DESCRIPTION	APPR
5-27-10				
 SCHLAFLY ENGINEERING LLC 121 SOUTH GENOIS STREET NEW ORLEANS LA 70119 PHONE 504-415-3347 FAX 504-482-7943 M. KIMBALL SCHLAFLY, P.E. LA REG 27699 <small>SEPTEMBER 4, 2009</small>				
 M. KIMBALL SCHLAFLY REG. No. 27699 REGISTERED PROFESSIONAL ENGINEER IN ELECTRICAL ENGINEERING				
DES: K. SCHLAFLY DRW: K. SCHLAFLY				
REVIEWED BY: R. WILTSE				
PM/DM: T. ARTRIP				
CHIEF ENG/ARCH: P. DAMMON				
DEPARTMENT OF THE NAVY NAVAL FACILITIES ENGINEERING COMMAND SOUTHEAST NAVAL AIR STATION JACKSONVILLE MISSISSIPPI JOHN C. STENNIS SPACE CENTER SOF RIVERINE AND COMBATANT CRAFT OPERATIONS FACILITY SITE PLAN - POWER				
CODE ID. NO. N4412	SIZE D			
SCALE: 1" = 40'-0"				
MAXIMO NO. #####				
STA. PROJ. NO. P-210				
WORK ORDER NO. 510247				
CONSTR. CONTR. NO. N62467-05-D-0096				
NAVFAC DRAWING NO. 15026754				
SHEET 107 OF 132				
E2.2				
<small>DRAWING REVISION: 01 JAN 2009</small>				