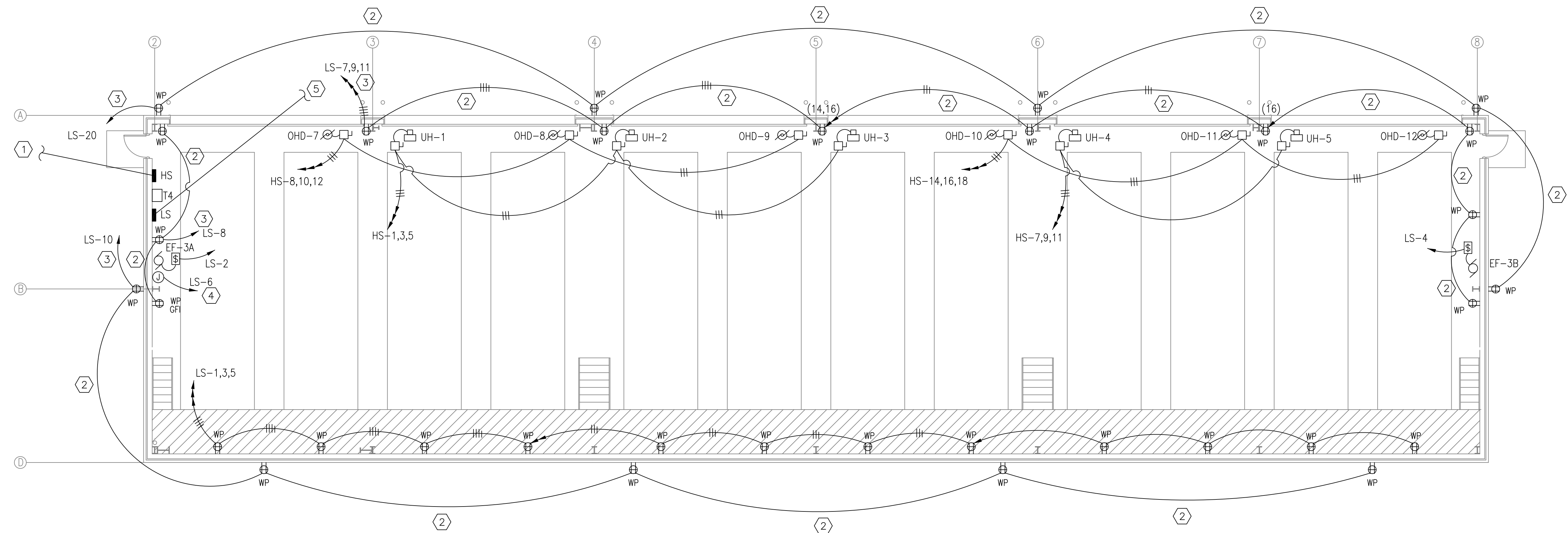


REVDATE: FILE NAME: C:\Schlafly\ENGR 08010 SDF Riverrine Drawings Elec 5-Ag--buils-EA.1.dwg LAYOUT NAME: EA.3 PLOTTED: Friday, May 28, 2010 - 3:13pm



BOAT STORAGE BLDG. 2442
FLOOR PLAN - POWER
SCALE: 1/8"=1'-0"




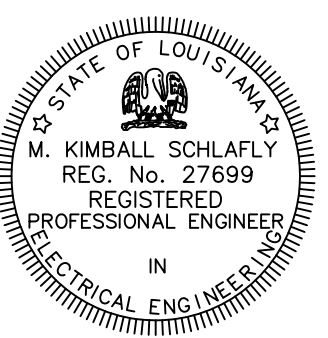
SPECIFIC NOTES THIS SHEET:

- ① 2-1/2" SCH 40 PVC ROUTED UNDERGROUND FROM BLDG 2440. SEE SHEET E2.2 FOR CONTINUATION. TURN UP THROUGH SLAB USING WRAPPED RIGID STEEL TO A POINT MINIMUM 6" ABOVE FLOOR. EXTEND TO PANEL USING RIGID STEEL CONDUIT THEREAFTER.
- ② ROUTE 3/4" SCH 40 PVC UNDERGROUND FOR RECEPTACLE CIRCUIT. STUB UP INSIDE CMU WALL TO FLUSH-MOUNT RECEPTACLE.
- ③ ROUTE HOMERUN 3/4" SCH 40 PVC IN SLAB TO PANEL. TURN UP THROUGH SLAB USING PLASTIC-COATED RIGID STEEL TO A POINT MINIMUM 6" ABOVE FLOOR. EXTEND TO PANEL USING RIGID STEEL CONDUIT THEREAFTER.
- ④ PROVIDE HARD-WIRE CONNECTION TO FIRE ALARM CONTROL PANEL.
- ⑤ 1" C: 3-#10 AWG AND 1-#10 GRD (LS-12,14). ROUTE TO PEDESTRIAN GATE. SEE SHEET E2.2 FOR CONTINUATION.

GENERAL NOTES THIS SHEET:

- 1. MINIMUM CONDUIT SIZE SHALL BE 3/4" UNLESS NOTED OTHERWISE. PROVIDE MINIMUM #10 AWG GROUND WIRE IN ALL CONDUIT UNLESS NOTED OTHERWISE.
- 2. ALL WIRE FOR RECEPTACLE CIRCUITS SHALL BE #10 AWG, UNLESS OTHERWISE NOTED.
- 3. ALL CONDUIT SHALL BE ROUTED OVERHEAD, UNLESS OTHERWISE NOTED.

RECORD DRAWING
LETTER DATED
5-27-10

5-27-10	DATE	APPR					
AS-BUILT REVISIONS	DESCRIPTION	SYM					
							
SCHLAFLY ENGINEERING LLC 121 SOUTH GENOIS STREET NEW ORLEANS LA 70119 PHONE 504-415-3347 FAX 504-482-7943 M. KIMBALL SCHLAFLY, P.E. LA REG 27699 <small>SEPTEMBER 4, 2009</small>							
							
DES: K. SCHLAFLY DRW: K. SCHLAFLY							
REVIEWED BY: R. WILTSE							
PM/DM: T. ARTRIP							
CHIEF ENG/ARCH: P. DAMMON							
DEPARTMENT OF THE NAVY	NAVAL FACILITIES ENGINEERING COMMAND	SOUTHEAST	NAVAL AIR STATION JACKSONVILLE	MISSISSIPPI	SOF RIVERINE AND COMBATANT	CRAFT OPERATIONS FACILITY	BLDG. 2442 FLOOR PLAN - POWER
CODE ID. NO. N4412	SIZE	D					
SCALE:	1/8"=1'-0"						
MAXIMO NO.	#####						
STA. PROJ. NO.	P-210						
WORK ORDER NO.	510247						
CONSTR. CONTR. NO.	N62467-05-D-0096						
NAVFAC DRAWING NO.	15026762						
SHEET	115 OF 132						
E4.3							
<small>DRAWING REVISION: 01 JAN 2009</small>							