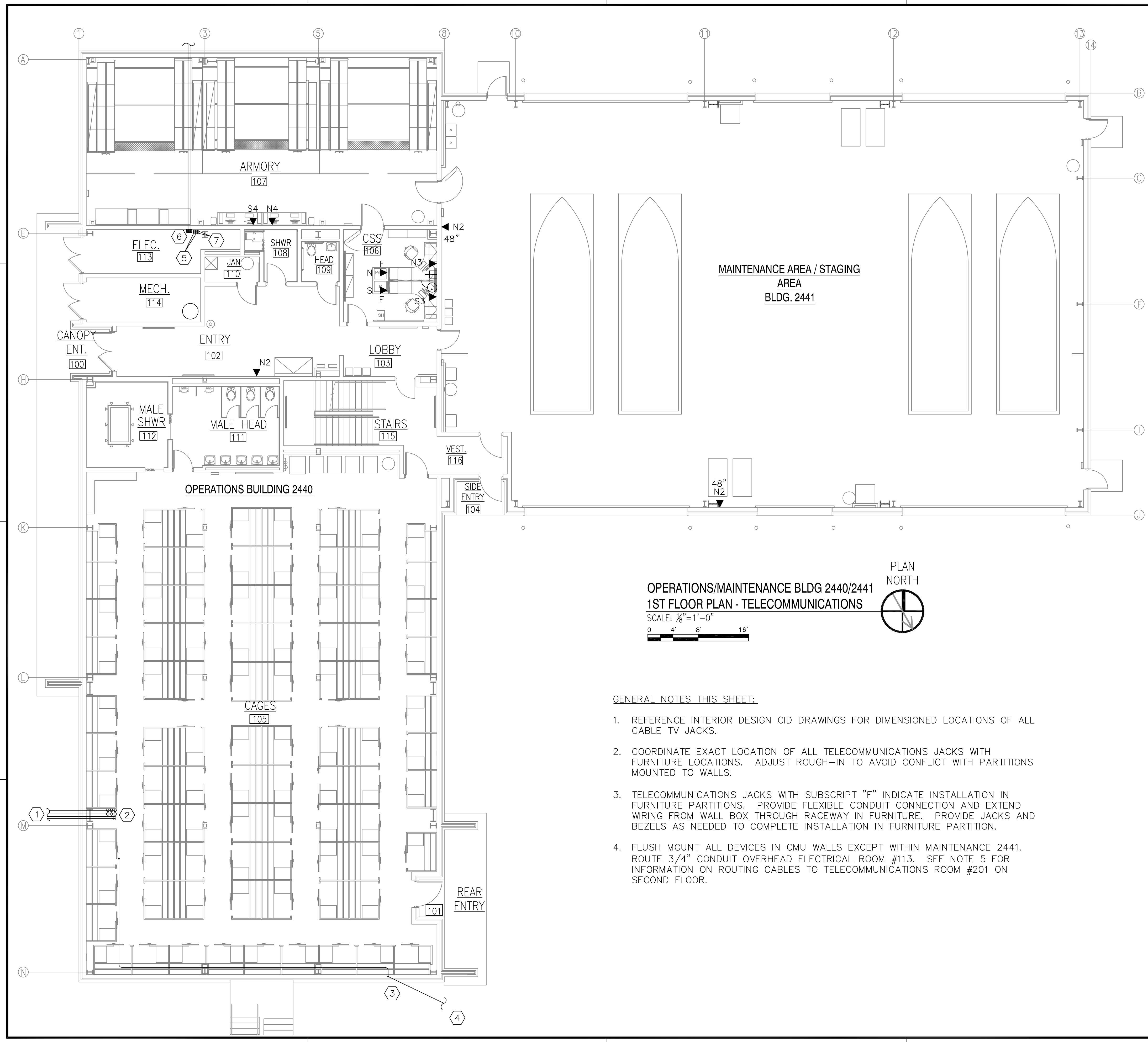
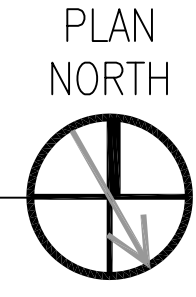


REVDATE: FILE NAME: C:\Schlafly\ENGR 08010_SOF Rivertine Drawings Elec 5-As--buils ES.1.dwg LAYOUT NAME: ES.1 PLOTTED: Friday, May 28, 2010 - 4:47pm



**OPERATIONS/MAINTENANCE BLDG 2440/2441
1ST FLOOR PLAN - TELECOMMUNICATIONS**

SCALE: 1/8"=1'-0"
0 4' 8' 16'




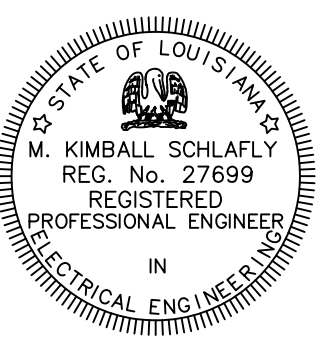
GENERAL NOTES THIS SHEET:

1. REFERENCE INTERIOR DESIGN CID DRAWINGS FOR DIMENSIONED LOCATIONS OF ALL CABLE TV JACKS.
2. COORDINATE EXACT LOCATION OF ALL TELECOMMUNICATIONS JACKS WITH FURNITURE LOCATIONS. ADJUST ROUGH-IN TO AVOID CONFLICT WITH PARTITIONS MOUNTED TO WALLS.
3. TELECOMMUNICATIONS JACKS WITH SUBSCRIPT "F" INDICATE INSTALLATION IN FURNITURE PARTITIONS. PROVIDE FLEXIBLE CONDUIT CONNECTION AND EXTEND WIRING FROM WALL BOX THROUGH RACEWAY IN FURNITURE. PROVIDE JACKS AND BEZELS AS NEEDED TO COMPLETE INSTALLATION IN FURNITURE PARTITION.
4. FLUSH MOUNT ALL DEVICES IN CMU WALLS EXCEPT WITHIN MAINTENANCE 2441. ROUTE 3/4" CONDUIT OVERHEAD ELECTRICAL ROOM #113. SEE NOTE 5 FOR INFORMATION ON ROUTING CABLES TO TELECOMMUNICATIONS ROOM #201 ON SECOND FLOOR.

SPECIFIC NOTES THIS SHEET:

- 1 6-4"C AND 4-2"C Routed TO MANHOLE. SEE SHEET E2.1 FOR CONTINUATION. TURN UP THROUGH SLAB OUTSIDE OF GRADE BEAM AND FOOTING. STAY BEHIND LINE OF CAGES AND DO NOT ENCR OACH ON CORRIDOR.
- 2 ROUTE ALL COMMUNICATIONS CONDUIT VERTICALL THROUGH SECOND FLOOR SLAB INTO RADIO ROOM 202.
- 3 1"CONDUIT FOR REMOTE MONITORING OF ELECTRIC METER. STUB UP THROUGH SLAB INSIDE CMU WALL. TRANSITION INTO CEILING SPACE AND ROUTE TIGHT TO UNDERSIDE OF BAR JOISTS AS SHOWN. TURN UP THROUGH FLOOR INTO TELECOMMUNICATIONS ROOM #201.
- 4 CONTINUE 1"C TO TRANSFORMER SLAB. STUB UP IN SECONDARY COMPARTMENT AND CAP FOR FUTURE USE.
- 5 PROVIDE 4-2" CONDUITS THROUGH SECOND FLOOR SLAB INTO MECH/ELEC ROOM 213. SEE SHEET E5.2 FOR CONTINUATION. ROUTE ALL SECURE NETWORK CABLE IN 1 CONDUIT, AND ALL NONSECURE CABLES IN OTHER CONDUIT. PROVIDE PULLSTRING FOR FUTURE ADDITIONS BY OWNER. PROVIDE PULLSTRINGS IN EMPTY CONDUITS FOR FUTURE USE.
- 6 PROVIDE 2-2"C Routed BELOW SLAB TO ANTENNA YARD. SEE SHEET E2.3 FOR CONTINUATION. TURN UP INTO WALL MOUNTED PULL BOX WITH LOCKABLE COVER. CONTINUE 2-2"C THROUGH SECOND FLOOR SLAB AND ROUTE ABOVE SECOND FLOOR CEILING TO RADIO ROOM #202.
- 7 PROVIDE 2-1" CONDUITS THROUGH SECOND FLOOR SLAB INTO MECH/ELEC ROOM 213. SEE SHEET E5.2 FOR CONTINUATION. ROUTE ALL RG6 CABLE IN 1 CONDUIT. PROVIDE PULLSTRING FOR FUTURE ADDITIONS BY OWNER. PROVIDE PULLSTRINGS IN EMPTY CONDUIT FOR FUTURE USE.

**RECORD DRAWING
LETTER DATED
5-27-10**

9-30-09	5-27-10	DATE	APPR
1	ADDED TELCO DEVICES AS-BUILT REVISIONS	DESCRIPTION	SYN
			
SCHLAFLY ENGINEERING LLC 121 SOUTH GENOIS STREET NEW ORLEANS LA 70119 PHONE 504-415-3347 FAX 504-482-7943 M. KIMBALL SCHLAFLY, P.E. LA REG 27699 SEPTEMBER 4, 2009			
			
DES: K. SCHLAFLY DRW: K. SCHLAFLY REVIEWED BY: R. WILTSE PM/DM: T. ARTRIP CHIEF ENG/ARCH: P. DAMMON			
DEPARTMENT OF THE NAVY NAVAL FACILITIES ENGINEERING COMMAND SOUTHEAST NAVAL AIR STATION JACKSONVILLE MISSISSIPPI JOHN C. STENNIS SPACE CENTER SOF RIVERINE AND COMBATANT CRAFT OPERATIONS FACILITY BLDG 2440/2441 1ST FLOOR - TELCO			
CODE ID. NO. N4412	SIZE D		
SCALE: 1/8"=1'-0"			
MAXIMO NO. #####			
STA. PROJ. NO. P-210			
WORK ORDER NO. 510247			
CONSTR. CONTR. NO. N62467-05-D-0096			
NAVFAC DRAWING NO. 15026763			
SHEET 116 OF 132			
E5.1			
DRAWING REVISION: 01 JAN 2009			