

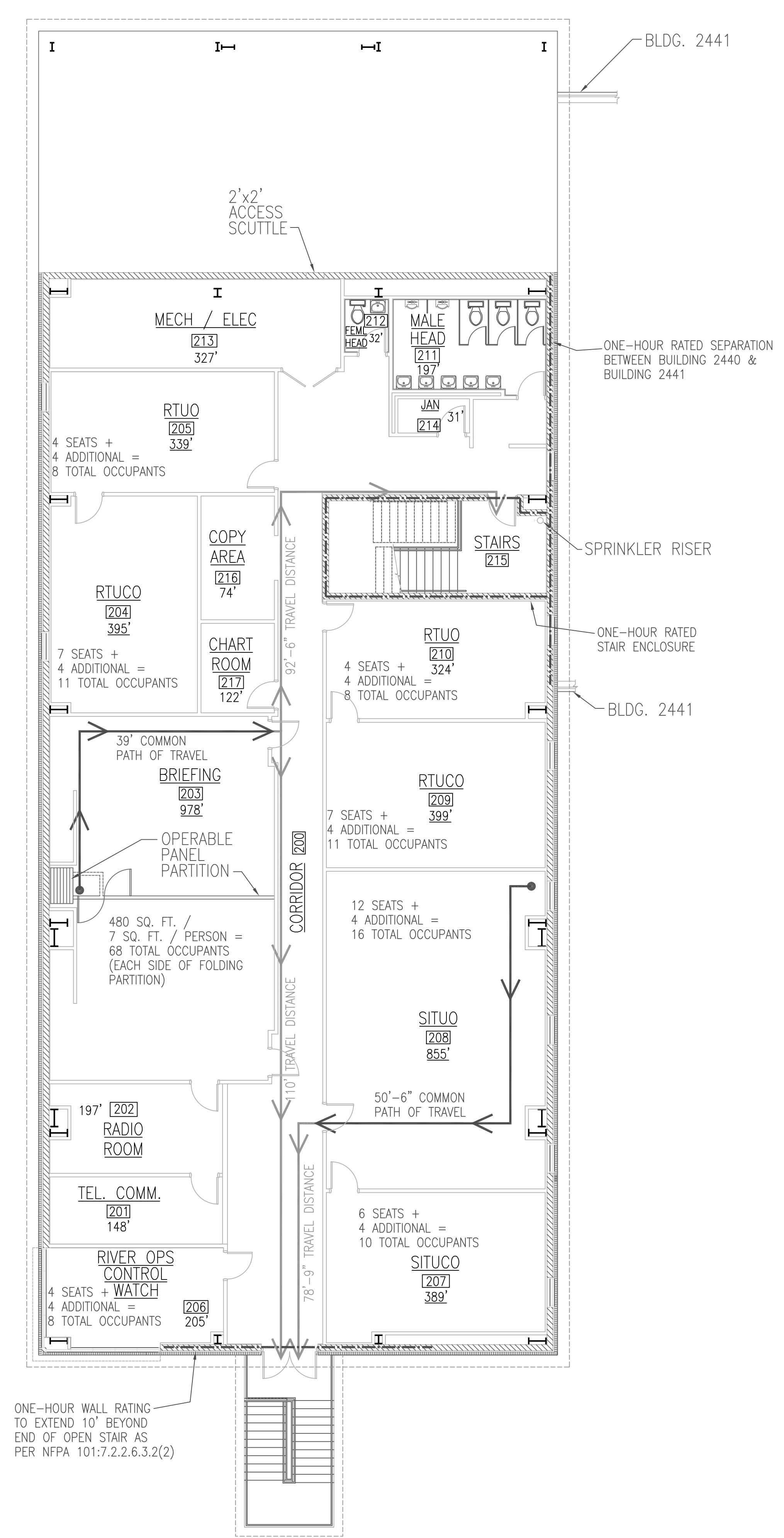
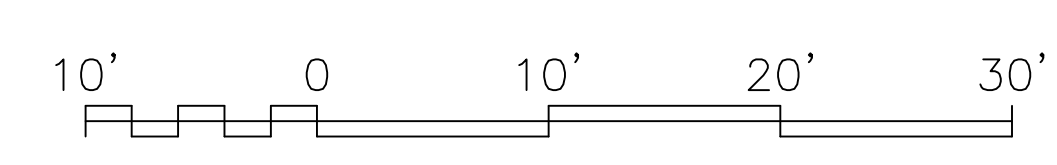
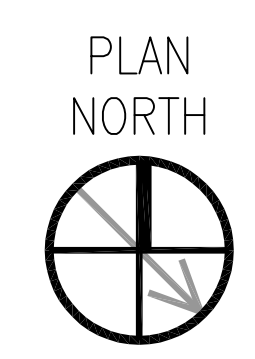
EGRESS CAPACITY PROVIDED					
	DOORS	STAIRS	RAMP	TOTAL EGRESS CAPACITY BY AREA	TOTAL EGRESS CAPACITY REQUIRED
	0.2 IN. / PERSON 0.55 CM. / PERSON	0.3 IN. / PERSON 0.75 CM. / PERSON	0.2 IN. / PERSON 0.5 CM. / PERSON		
MAINTENANCE/STAGING AREA BUILDING 2441	4 DOORS @ 34" = 680 PERSONS			680 PERSONS	64 PERSONS
FIRST FLOOR OPERATIONS BUILDING 2440 - PLAN SOUTH	1 DOOR @ 34" = 170 PERSONS 1 DOOR @ 72" = 360 PERSONS			530 PERSONS	10 PERSONS
FIRST FLOOR OPERATIONS BUILDING 2440 - PLAN NORTH	2 DOORS @ 34" = 340 PERSONS			340 PERSONS	10 PERSONS
SECOND FLOOR OPERATIONS BUILDING 2440	2 DOORS @ 34" = 340 PERSONS	1 STAIR @ 55" = 183 PERSONS 1 STAIR @ 53" = 178 PERSONS		340 PERSONS	208 PERSONS

DOOR CLEAR WIDTH: 34" / 86 CM
72" / 183 CM
SOUTH STAIR CLEAR WIDTH: 55" / 139 CM
NORTH STAIR CLEAR WIDTH: 53" / 134 CM

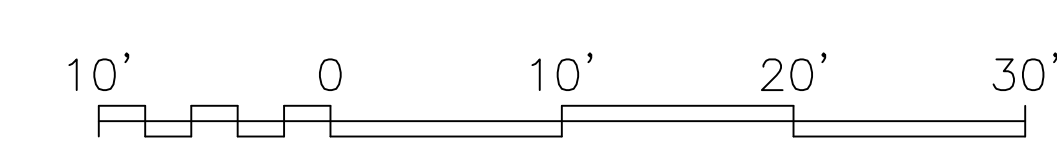
	MAXIMUM TRAVEL DISTANCES					
	ASSEMBLY		BUSINESS		STORAGE	
	ALLOWED	ACTUAL	ALLOWED	ACTUAL	ALLOWED	ACTUAL
COMMON PATH OF TRAVEL	75 FT 30 M	39 FT 11.9 M	100 FT 30 M	50.5 FT 15.4 M	100 FT 30 M	69 FT 21 M
TRAVEL DISTANCE TO EXIT	250 FT 76 M	110 FT 33.5 M	300 FT 91 M	79 FT 24 M	250 FT 76 M	104.5 FT 31.9 M

BUILDING 2440
15,451 TOTAL BLDG s.f.
8,584 1ST FLOOR s.f.
6,867 2ND FLOOR s.f.

**OPERATIONS BLDG.
2440/2441 FIRST FLOOR
LIFE SAFETY PLAN**
SCALE: 3/32" = 1'-0"



**OPERATIONS BLDG.
2440/2441 SECOND FLOOR
LIFE SAFETY PLAN**
SCALE: 3/32" = 1'-0"



ENGINEERED FIRE PROTECTION, LLC
DAVID L. MILLER, P.E.
11920 RICHCROFT AVENUE
Baton Rouge, Louisiana 70814
(225) 273-5040 FAX (225) 275-2535

DATE	APPR.
DESCRIPTION	
1095 FLORIDA AVENUE SUITE LA 70458 (985) 649-5832 AE L000	
DES	DRW D. MILLER
REVIEWED BY	D. MILLER
PM/DM	
CHIEF ENG./ARCH.	D. MILLER
DEPARTMENT OF THE NAVY NAVAL FACILITIES ENGINEERING COMMAND SOUTHEAST (FT. GULF COAST) JOHN C. STENNIS SPACE CENTER MISSISSIPPI SOF RIVERINE AND COMBATANT CRAFT OPERATIONS FACILITY OPS./AINT. BLDG. 2440/2441 LIFE SAFETY PLAN	
CODE ID. NO.	N4412
SCALE	3/32" = 1'
MAXIMO NO.	#####
STA. PROJ. NO.	P-210
WORK ORDER NO.	510247
CONSTR. CONTR. NO.	N62467-05-D-0096
NAVFAC DRAWING NO.	15026651
SHEET	4 OF 126
LS.1	
DRAWN/REVISION: 01 JAN 2009	