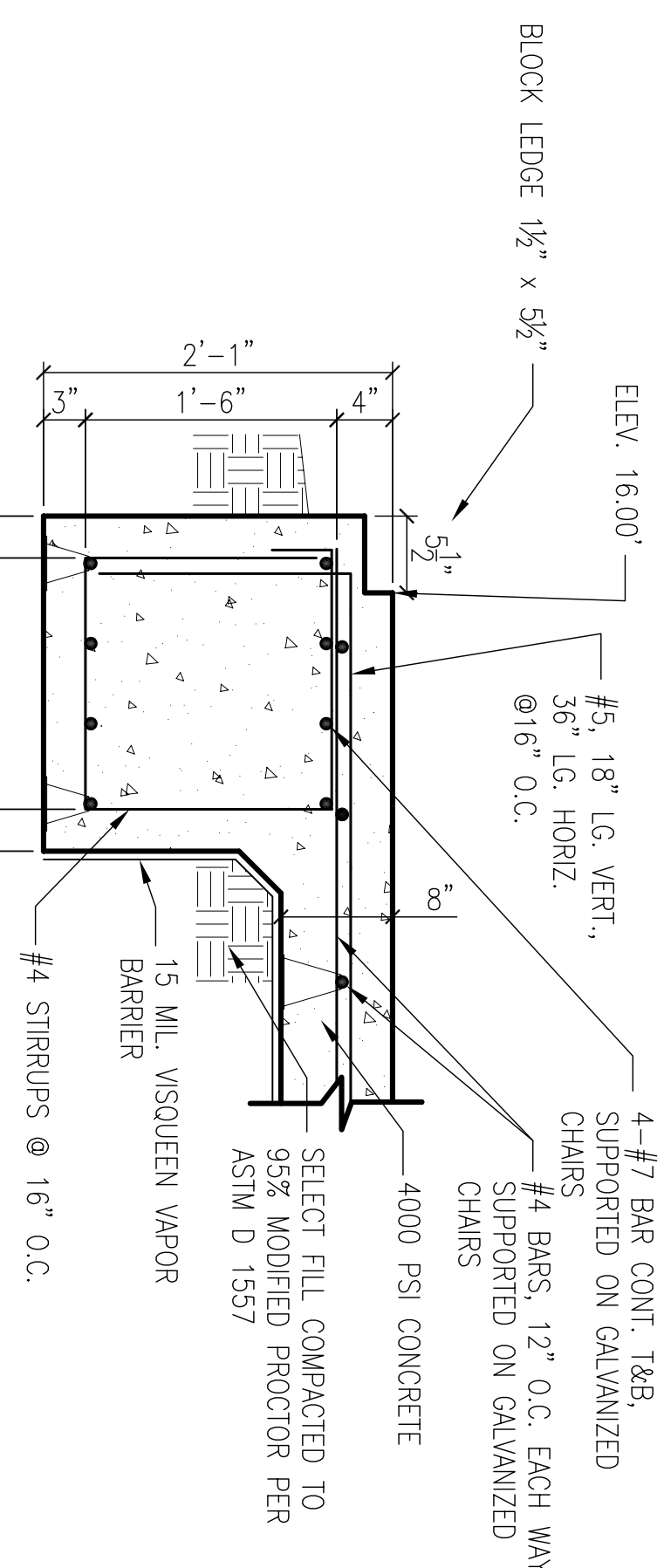
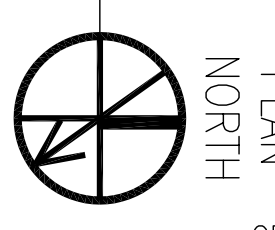
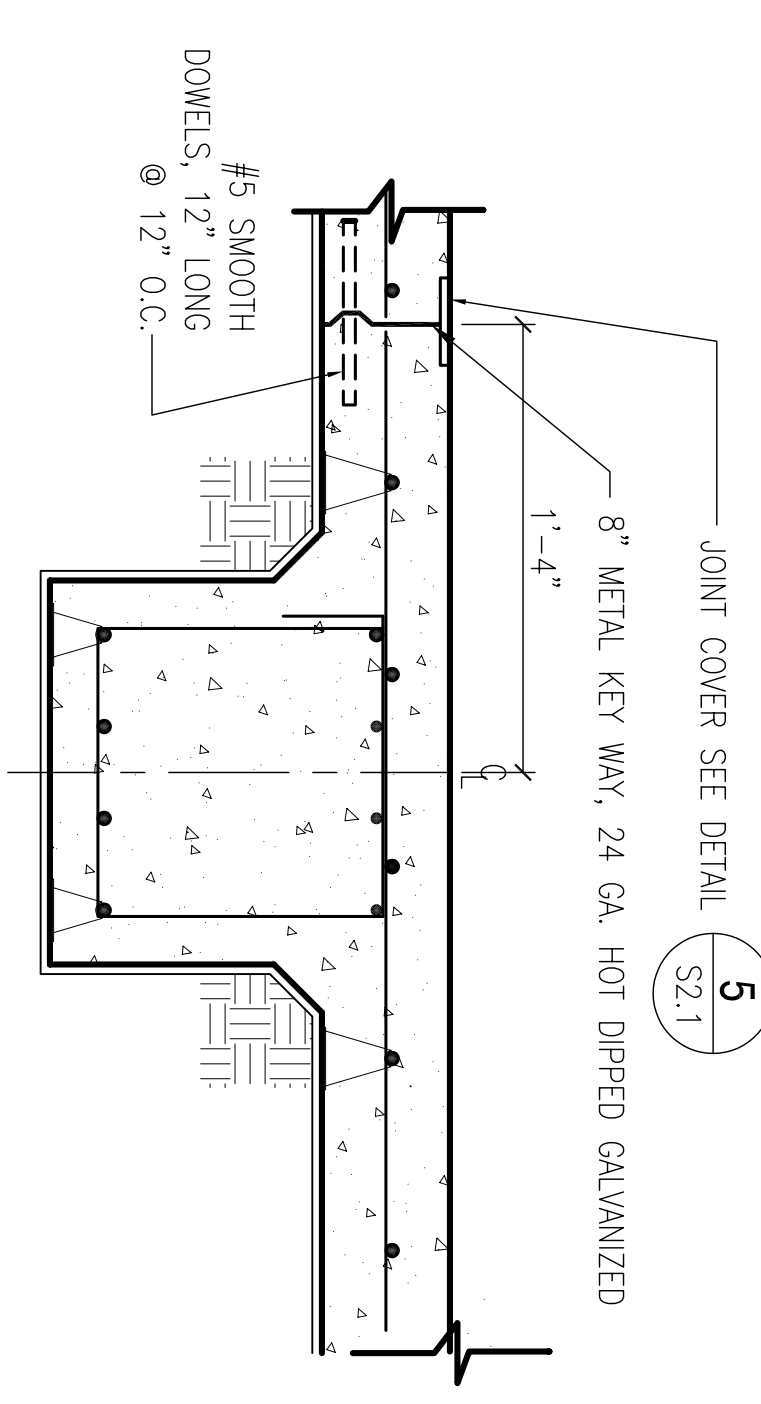


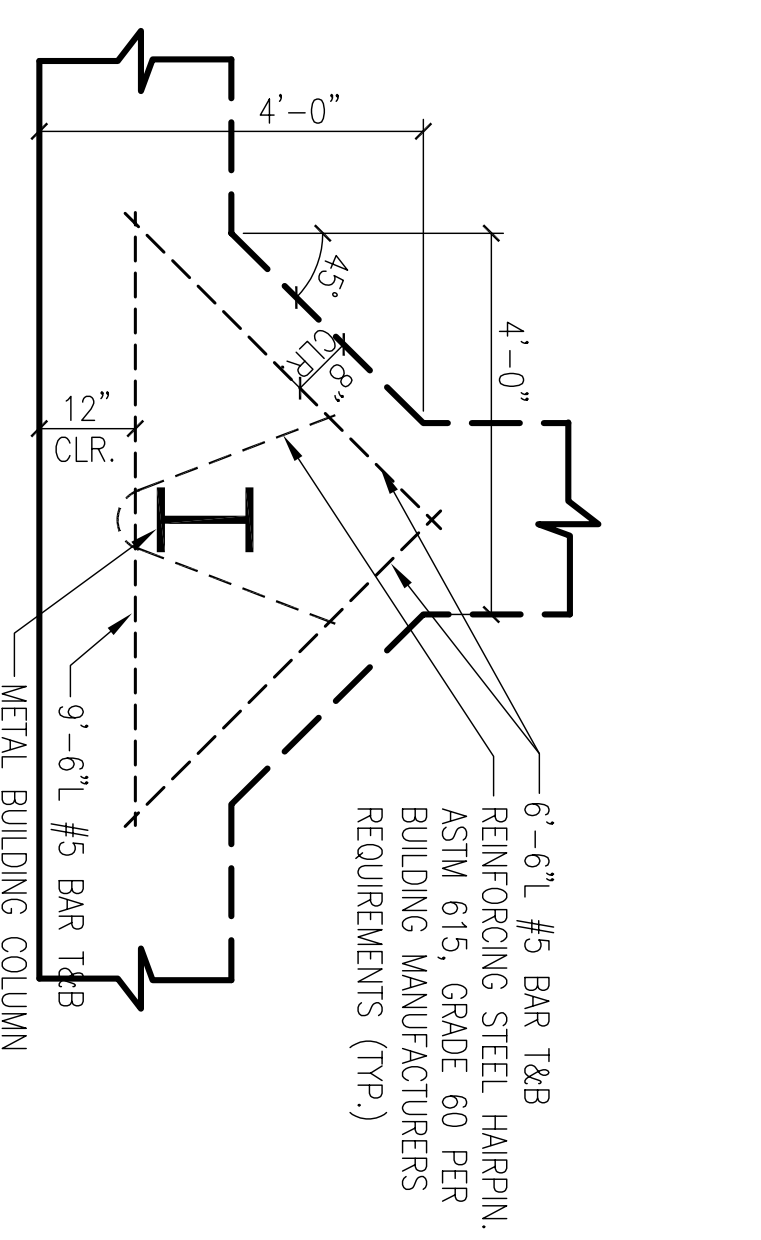
BOAT STORAGE BLDG. 2442 FOUNDATION PLAN
SCALE: 1/8"=1'-0"



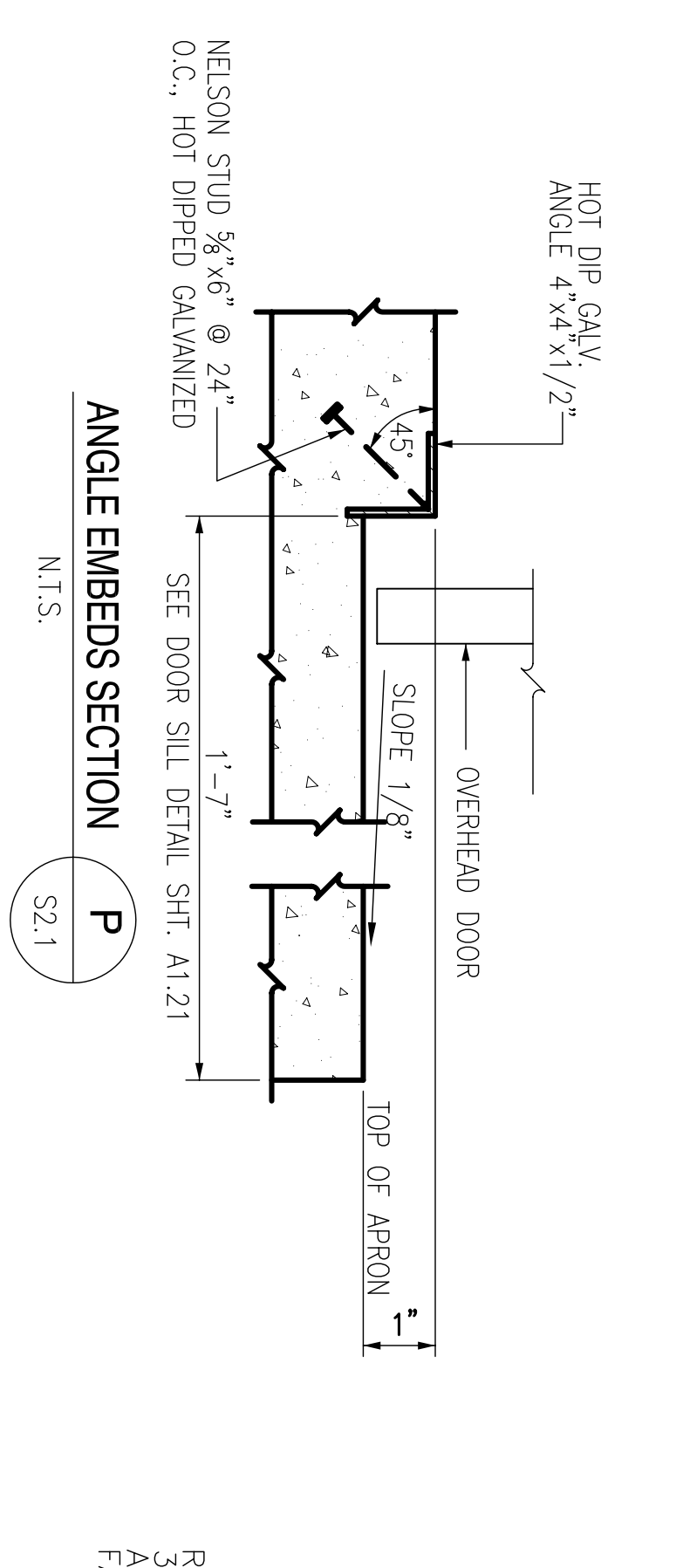
SECTION N
SCALE: 1"=1'-0"
S2.1



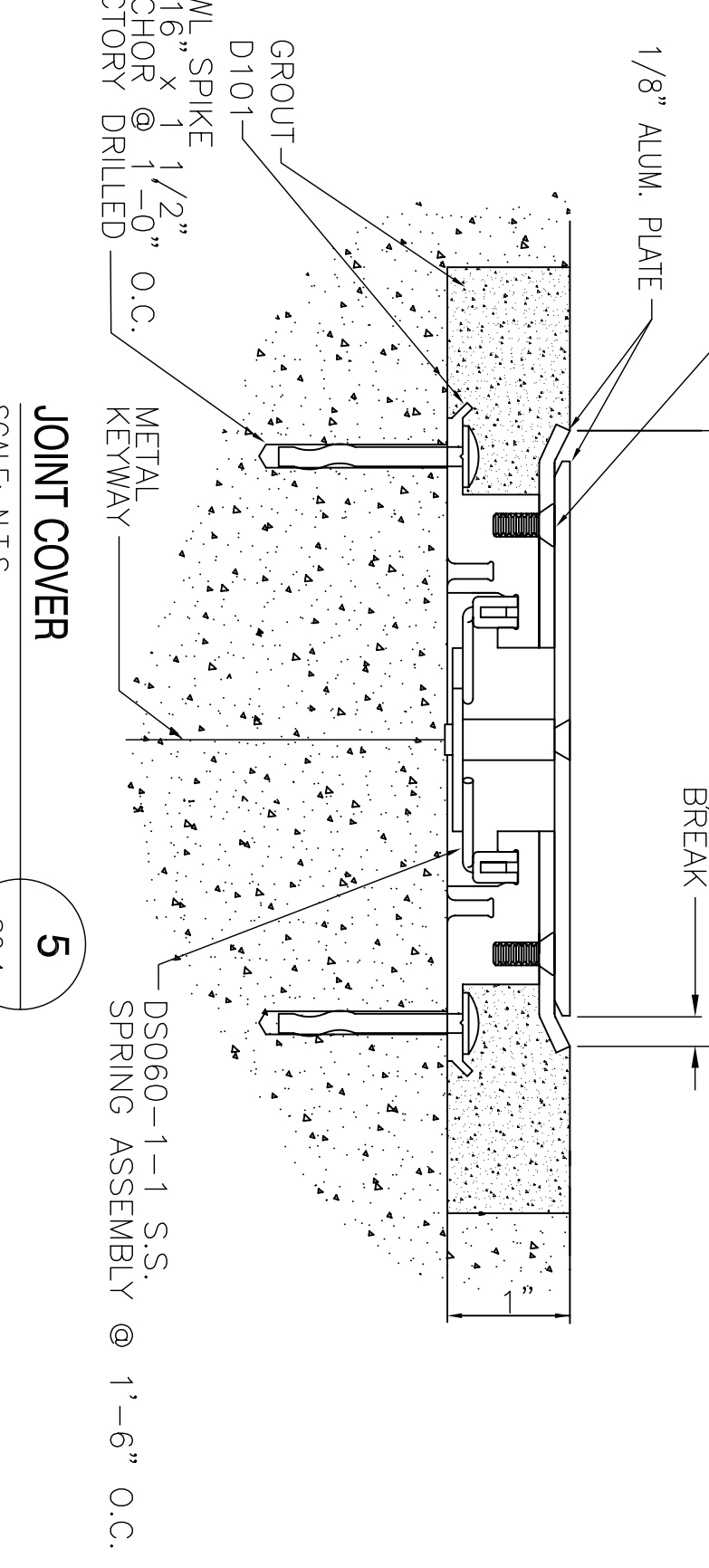
CONTROL JOINT SECTION Q
SCALE: 1"=1'-0"
S2.1



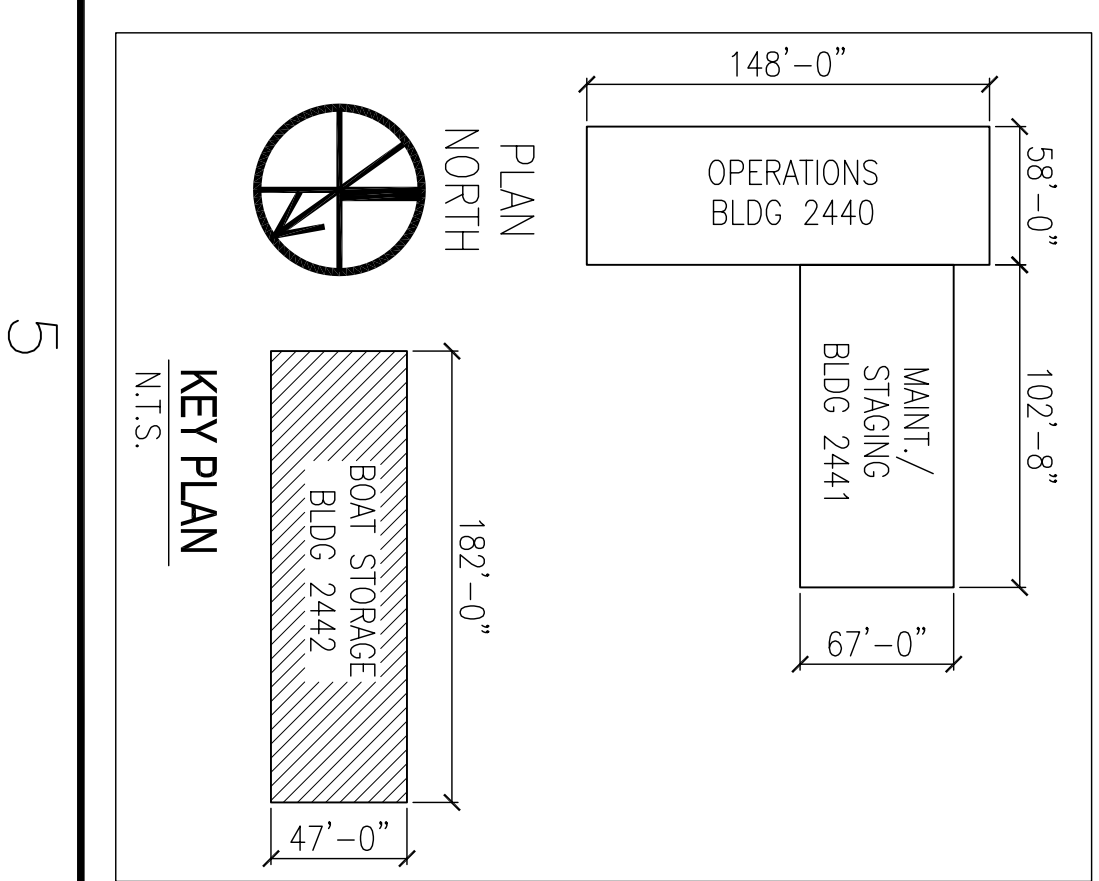
FOOTING @ COLUMN DETAIL 4
SCALE: 1/2"=1'-0"
S2.1



ANGLE EMBEDS SECTION P
SCALE: N.T.S.
S2.1



JOINT COVER 5
SCALE: N.T.S.
S2.1



SYM	DESCRIPTION	DATE	APPR
	AS-BUILT	4-27-10	RW

RECORD DRAWING
LETTER DATED -
5-27-10



DEPARTMENT OF THE NAVY
NAVAL FACILITIES ENGINEERING COMMAND SOUTHEAST
NAVAL AIR STATION JACKSONVILLE
MISSISSIPPI

JOHN C. STENNIS SPACE CENTER
SOF RIVERINE AND COMBATANT
CRAFT OPERATIONS FACILITY - PRE-FINAL
STORAGE BLDG. 2442 FOUNDATION PLAN

EMMETT B. DAMMON
ENGINEERING, INC.
REGISTERED PROFESSIONAL ENGINEER
STATE OF MISSISSIPPI
NO. 44378
SODDLE LA 70082
(985) 649-5332

DESIGNED BY: R. WILSON
DRAWN BY: T. ARP
CHECKED BY: E. DAMMON
DATE: 4/20/10

NAVFAC
NAVAL FACILITIES ENGINEERING COMMAND SOUTHEAST
NAVAL AIR STATION JACKSONVILLE
MISSISSIPPI

MAKNO NO. AS SHOWN
SCALE: AS SHOWN
SHEET NO. 210
WORK ORDER NO. 510247
CONTRACT NO. N62467-05-0-0096
NAVFAC DRAWING NO. 15006722
DATE: 07-07-13