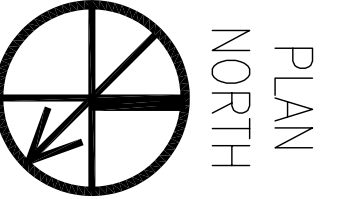
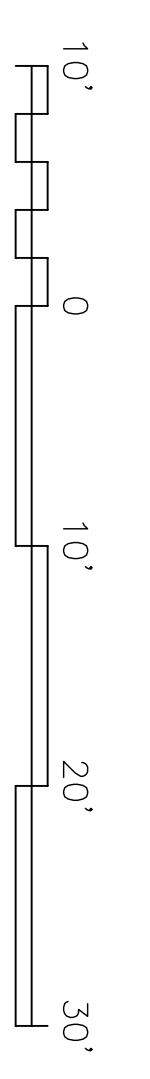


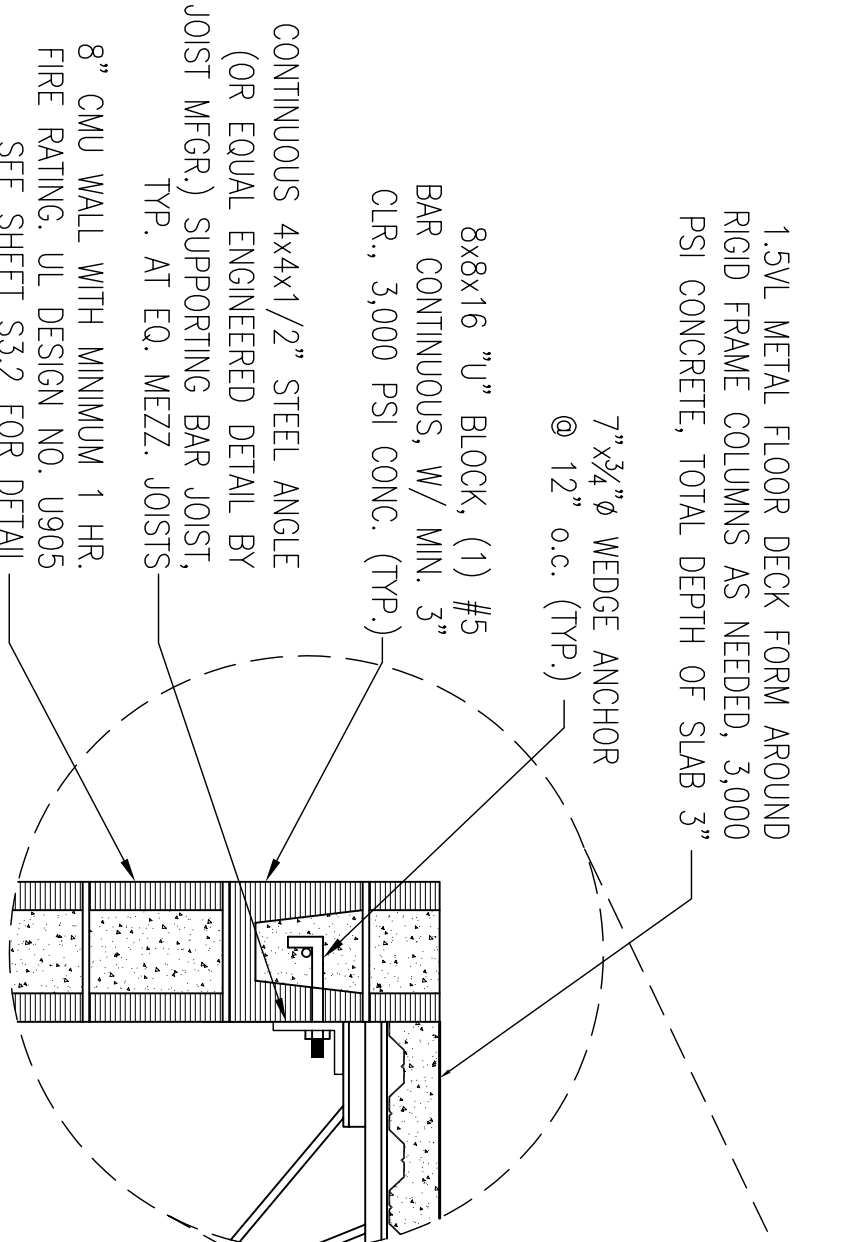
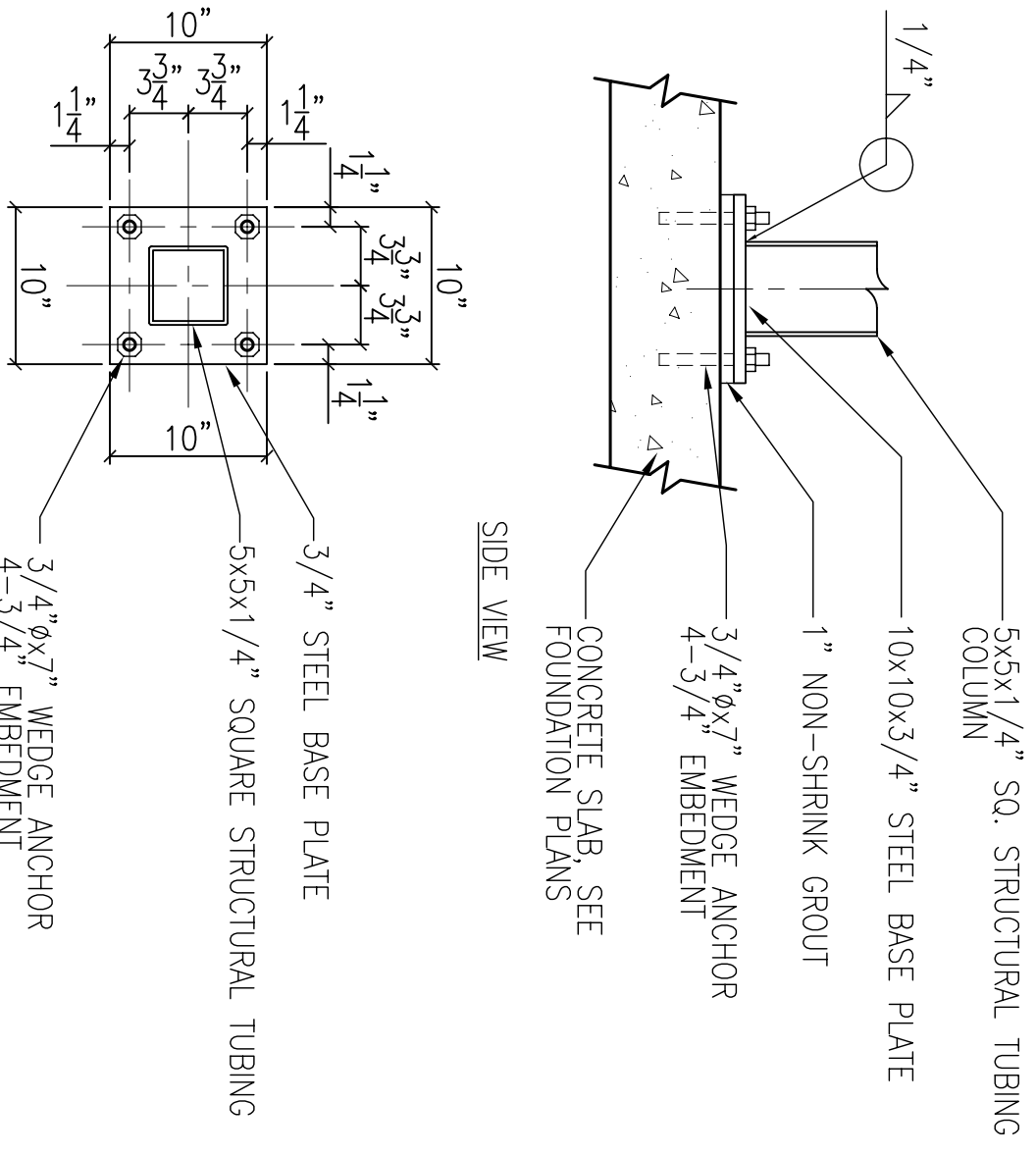
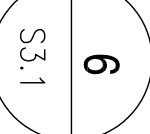
ARMORY / EQ. MEZZANINE STRUCTURAL FRAMING PLAN

SCALE: 1/8" = 1'-0"

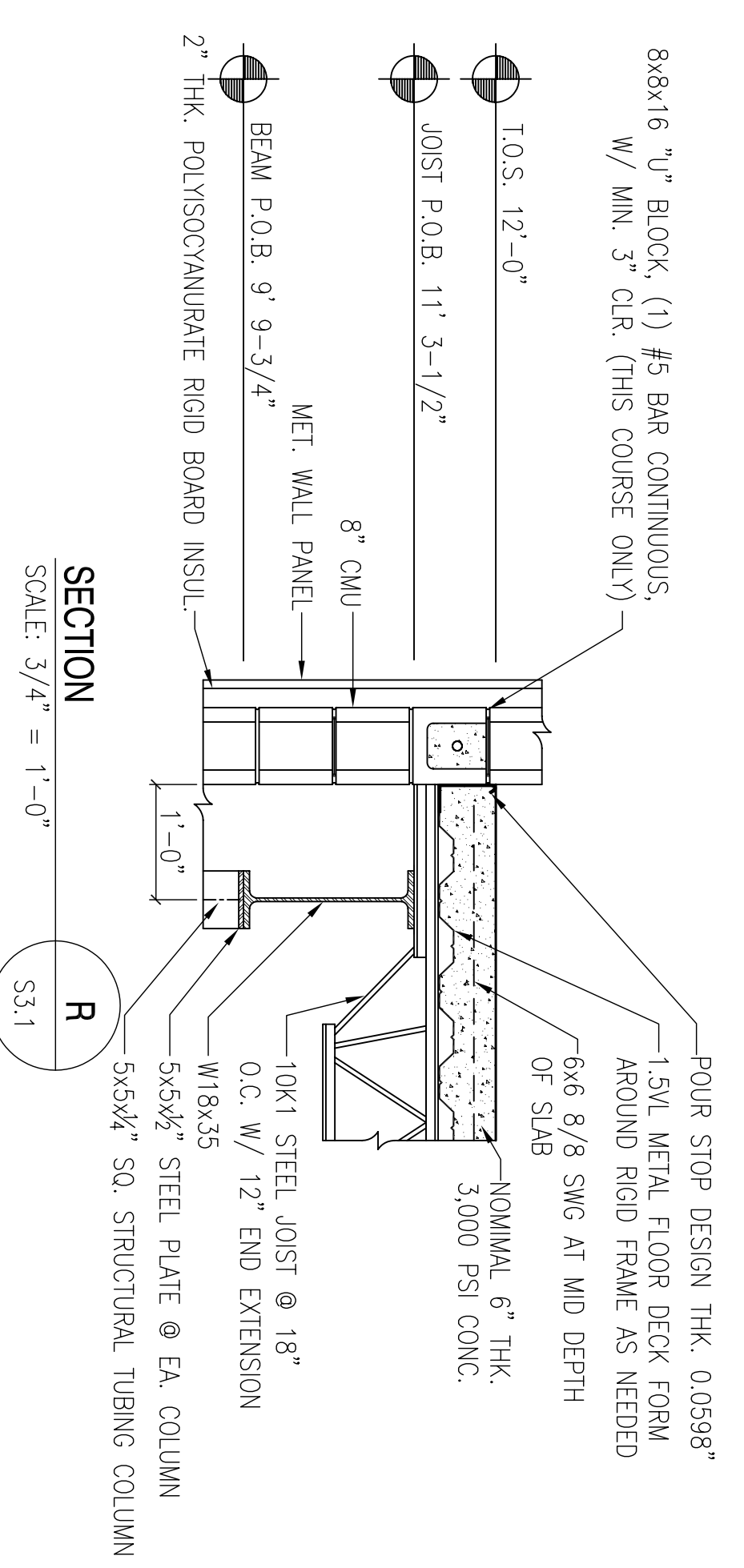
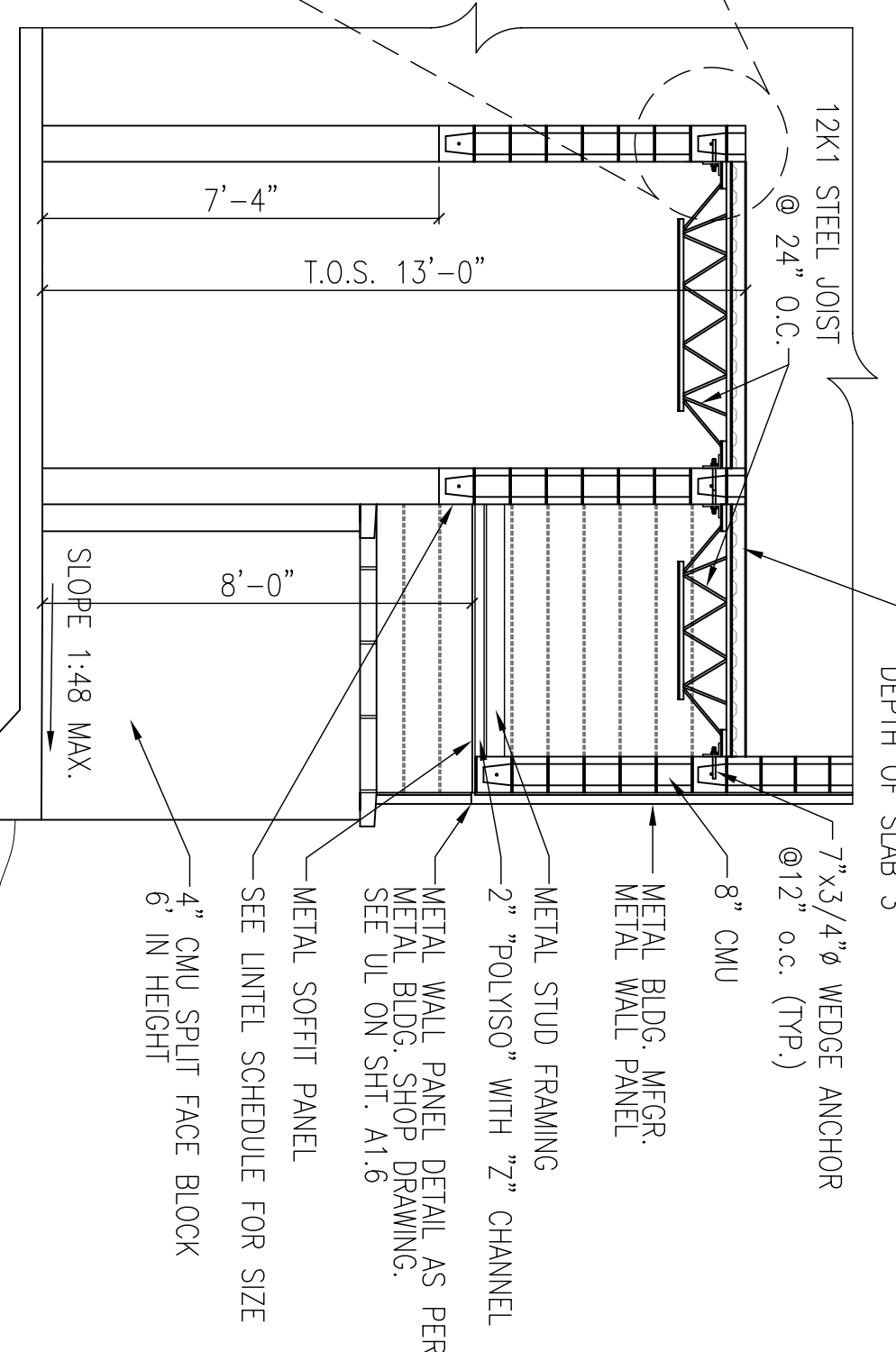
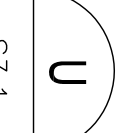


COLUMN BASE PLATE DETAIL

SCALE: 3/4" = 1'-0"

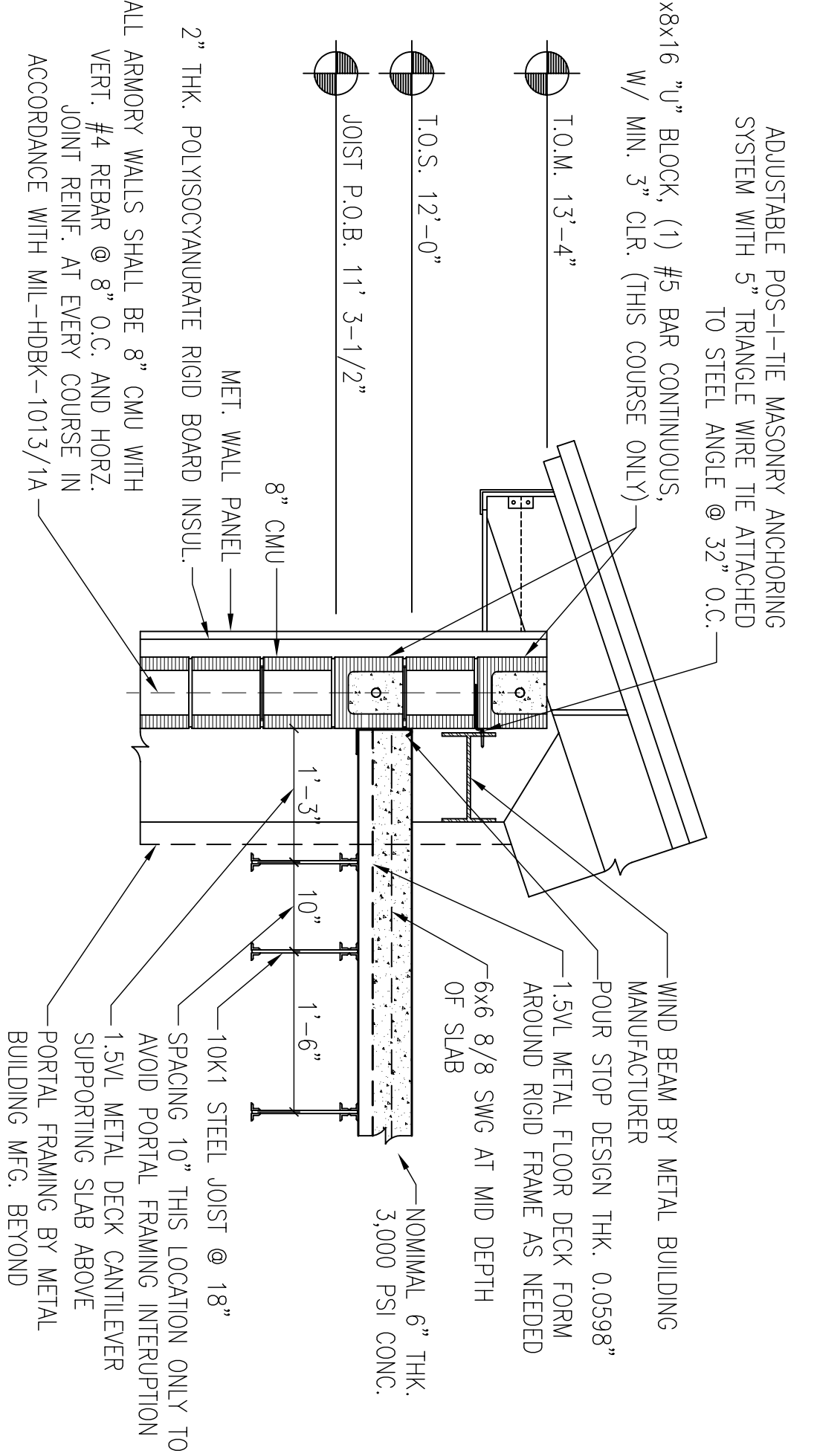
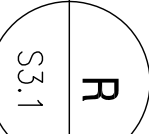


SECTION @ EQUIPMENT MEZZ.



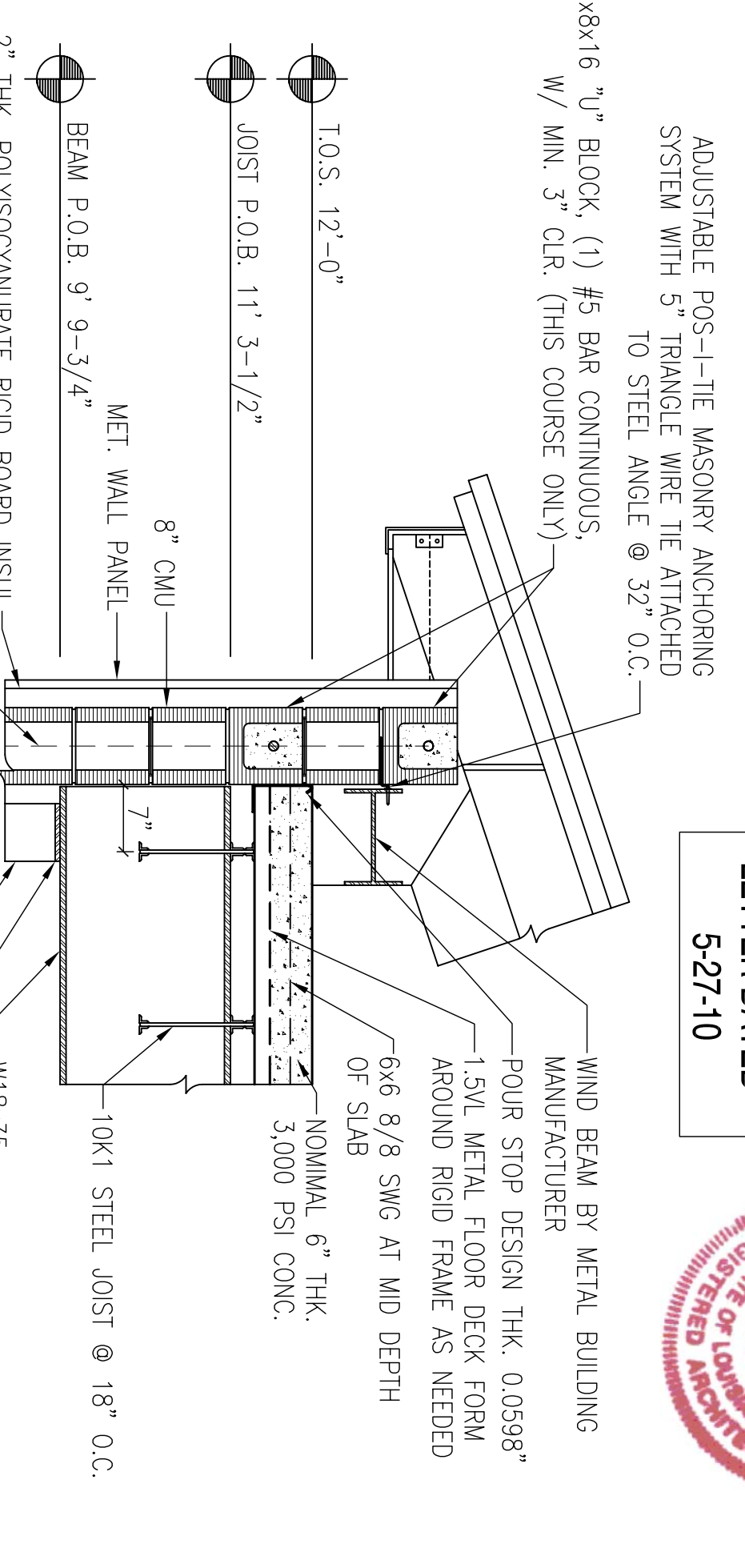
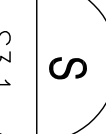
SECTION

SCALE: 3/4" = 1'-0"



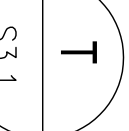
SECTION

SCALE: 3/4" = 1'-0"



SECTION

SCALE: 3/4" = 1'-0"



RECORD DRAWING
LETTER DATED -
5-27-10



SY	DESCRIPTION	DATE	APPR
	AS-BUILT	4-27-10	RW
	REVISED AS PER URS COMMENTS 9 OCTOBER 2009	11-6-09	RW

DEPARTMENT OF THE NAVY NAVAL FACILITIES ENGINEERING COMMAND NAVAL AIR STATION JACKSONVILLE MISSISSIPPI SOFT RIVERINE AND COMBATANT CRAFT OPERATIONS FACILITY - PRE-FINAL ARMORY / EQ. MEZZ. STRUCTURAL FRAMING PLAN	JOHN C. STENNIS SPACE CENTER MISSISSIPPI SOFT RIVERINE AND COMBATANT CRAFT OPERATIONS FACILITY - PRE-FINAL ARMORY / EQ. MEZZ. STRUCTURAL FRAMING PLAN	NAVAL FACILITIES ENGINEERING COMMAND NAVAL AIR STATION JACKSONVILLE MISSISSIPPI SOFT RIVERINE AND COMBATANT CRAFT OPERATIONS FACILITY - PRE-FINAL ARMORY / EQ. MEZZ. STRUCTURAL FRAMING PLAN
--	--	--

DAWSON ENGINEERING, INC. ENGINEER CHIEF ARCHITECT DAWSON, P.E. GARY A. WATKINS 10001 LINDA AVENUE SUITE 100 JACKSONVILLE, MISSISSIPPI (985) 649-8532 2008	EMMETT B. DAMMON REGISTERED PROFESSIONAL ENGINEER STATE OF MISSISSIPPI LICENSE NO. 9882 2008	DES. R. WATKINS DRAWN: D. TRIVANI CHECKED BY: S. WATKINS IN CHARGE: E. HERRING PROJECT ENGINEER: P. DAMMON
--	--	--

NAVFAC 15028724 SHEET 77 OF 132 SS3.1	WORK ORDER NO. 510247 CONSR. CONTR. NO. N62467-05-D-10096 NAVFAC DRAWING NO. 15028724	SCALE: AS SHOWN STA. PROJ. NO. P-210 WORK ORDER NO. 510247 CONSR. CONTR. NO. N62467-05-D-10096 NAVFAC DRAWING NO. 15028724
---	---	--