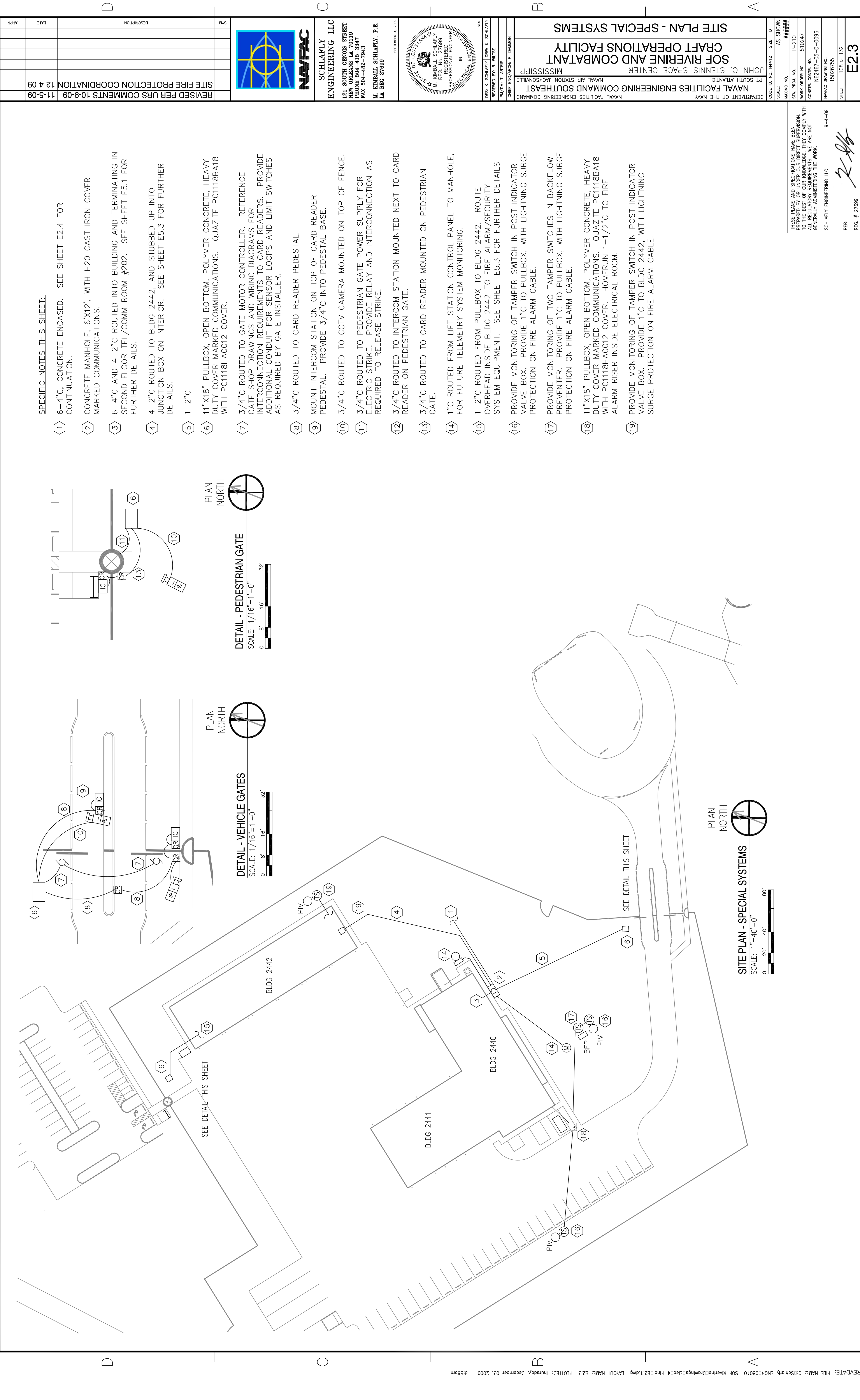


1 2 3 4 5

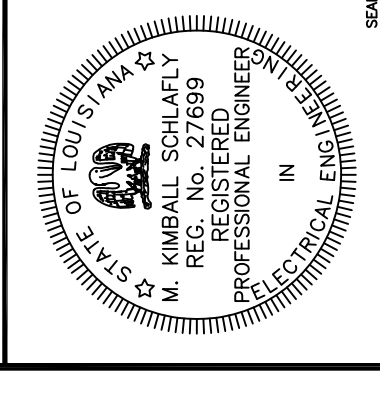


**SPECIFIC NOTES THIS SHEET:**

- 1 6-4" C, CONCRETE ENCASED. SEE SHEET E2.4 FOR CONTINUATION.
- 2 CONCRETE MANHOLE, 6'X12', WITH H2O CAST IRON COVER MARKED COMMUNICATIONS.
- 3 6-4" C AND 4-2" C ROUTED INTO BUILDING AND TERMINATING IN SECOND FLOOR TEL/COMM ROOM #202. SEE SHEET E5.1 FOR FURTHER DETAILS.
- 4 4-2" C ROUTED TO BLDG 2442, AND STUBBED UP INTO JUNCTION BOX ON INTERIOR. SEE SHEET E5.3 FOR FURTHER DETAILS.
- 5 1-2" C.
- 6 11"X18" PULLBOX, OPEN BOTTOM, POLYMER CONCRETE, HEAVY DUTY COVER MARKED COMMUNICATIONS. QUAZITE PC1118BA18 WITH PC1118HA0012 COVER.
- 7 3/4" C ROUTED TO GATE MOTOR CONTROLLER. REFERENCE GATE SHOP DRAWINGS AND WIRING DIAGRAMS FOR INTERCONNECTION REQUIREMENTS TO CARD READERS. PROVIDE ADDITIONAL CONDUIT FOR SENSOR LOOPS AND LIMIT SWITCHES AS REQUIRED BY GATE INSTALLER.
- 8 3/4" C ROUTED TO CARD READER PEDESTAL.
- 9 MOUNT INTERCOM STATION ON TOP OF CARD READER PEDESTAL. PROVIDE 3/4" C INTO PEDESTAL BASE.
- 10 3/4" C ROUTED TO CCTV CAMERA MOUNTED ON TOP OF FENCE.
- 11 3/4" C ROUTED TO PEDESTRIAN GATE POWER SUPPLY FOR ELECTRIC STRIKE. PROVIDE RELAY AND INTERCONNECTION AS REQUIRED TO RELEASE STRIKE.
- 12 3/4" C ROUTED TO INTERCOM STATION MOUNTED NEXT TO CARD READER ON PEDESTRIAN GATE.
- 13 3/4" C ROUTED TO CARD READER MOUNTED ON PEDESTRIAN GATE.
- 14 1" C ROUTED FROM LIFT STATION CONTROL PANEL TO MANHOLE, FOR FUTURE TELEMETRY SYSTEM MONITORING.
- 15 1-2" C ROUTED FROM PULLBOX TO BLDG 2442. ROUTE OVERHEAD INSIDE BLDG 2442 TO FIRE ALARM/SECURITY SYSTEM EQUIPMENT. SEE SHEET E5.3 FOR FURTHER DETAILS.
- 16 PROVIDE MONITORING OF TAMPER SWITCH IN POST INDICATOR VALVE BOX. PROVIDE 1" C TO PULLBOX, WITH LIGHTNING SURGE PROTECTION ON FIRE ALARM CABLE.
- 17 PROVIDE MONITORING OF TWO TAMPER SWITCHES IN BACKFLOW PREVENTER. PROVIDE 1" C TO PULLBOX, WITH LIGHTNING SURGE PROTECTION ON FIRE ALARM CABLE.
- 18 11"X18" PULLBOX, OPEN BOTTOM, POLYMER CONCRETE, HEAVY DUTY COVER MARKED COMMUNICATIONS. QUAZITE PC1118BA18 WITH PC1118HA0012 COVER. HOMERUN 1-1/2" C TO FIRE ALARM RISER INSIDE ELECTRICAL ROOM.
- 19 PROVIDE MONITORING OF TAMPER SWITCH IN POST INDICATOR VALVE BOX. PROVIDE 1" C TO BLDG 2442, WITH LIGHTNING SURGE PROTECTION ON FIRE ALARM CABLE.



**SCHLAFLY ENGINEERING LLC**  
 121 SOUTH GENOIS STREET  
 NEW ORLEANS, LA 70119  
 PHONE: 504-482-7947  
 FAX: 504-482-7943  
 M. KIMBALL SCHLAFLY, P.E.  
 LA REG 27699



DES: K. SCHLAFLY DRW: K. SCHLAFLY  
 REVIEWED BY: R. WILTSE  
 PM/DIA: T. ARTRIP  
 CHIEF ENGINEER: P. DAMON

NAVAL FACILITIES ENGINEERING COMMAND  
 SOUTH EAST  
 NAVAL AIR STATION JACKSONVILLE  
 MISSISSIPPI  
 JOHN C. STENNIS SPACE CENTER  
 SOF RIVERINE AND COMBAT  
 CRAFT OPERATIONS FACILITY  
 SITE PLAN - SPECIAL SYSTEMS

DEPARTMENT OF THE NAVY	SCALE: AS SHOWN
CODE ID. NO. N4412	SIZE: D
MAXIMO NO. #####	
STA. PROJ. NO. P-210	
WORK ORDER NO. 510247	
CONSTR. CONTR. NO. NC2467-05-D-0086	
NAVFAC DRAWING NO. 15026755	
SHEET 108 OF 132	
<b>E2.3</b>	

THESE PLANS AND SPECIFICATIONS HAVE BEEN PREPARED BY ME OR UNDER MY DIRECT SUPERVISION. I AM A LICENSED PROFESSIONAL ENGINEER WITH ALL REGULATORY REQUIREMENTS. WE ARE NOT GENERALLY ADMINISTERING THE WORK.  
 9-4-09  
 SCHLAFLY ENGINEERING LLC  
 PER: *[Signature]*  
 REG. # 27699