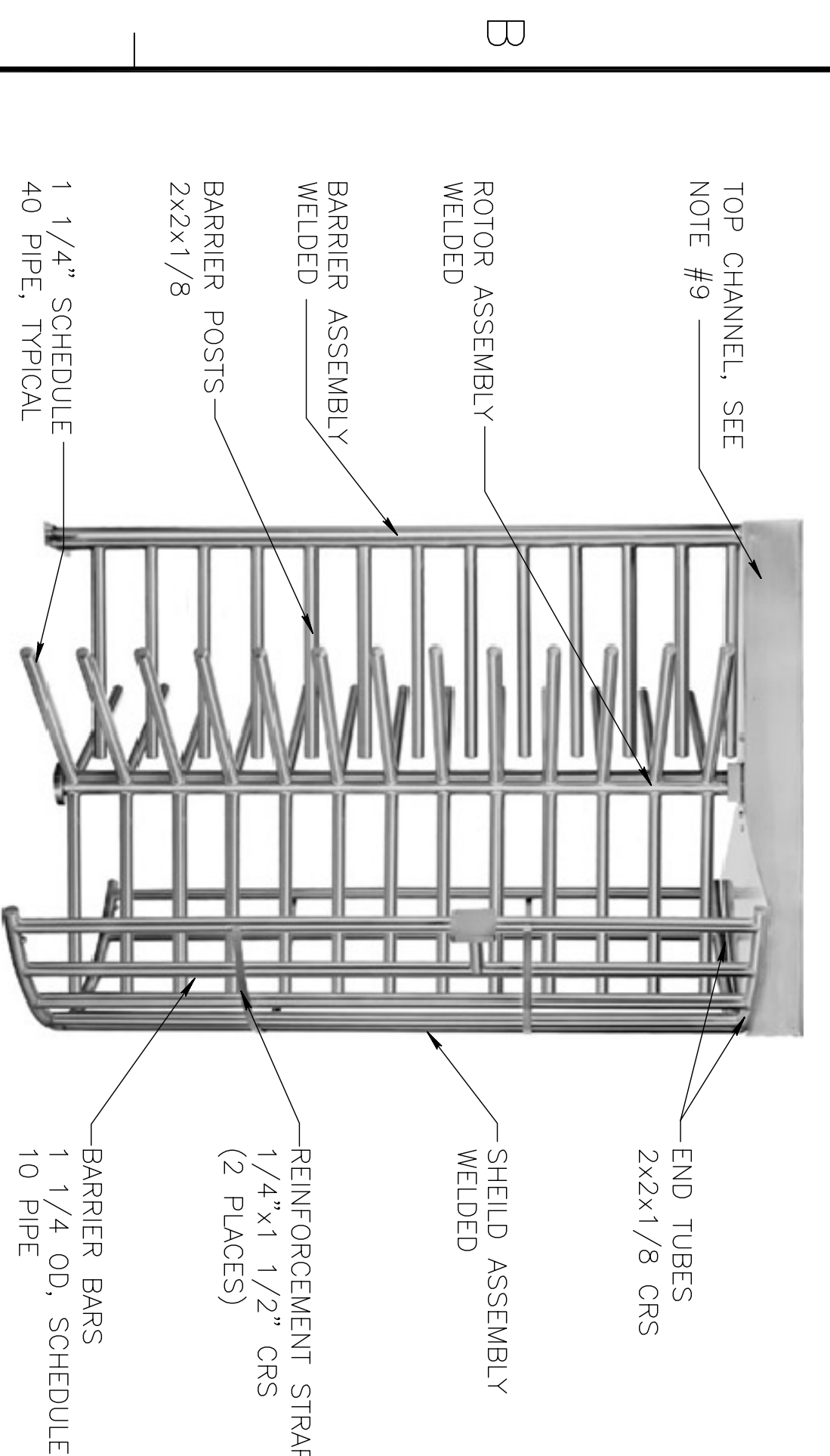
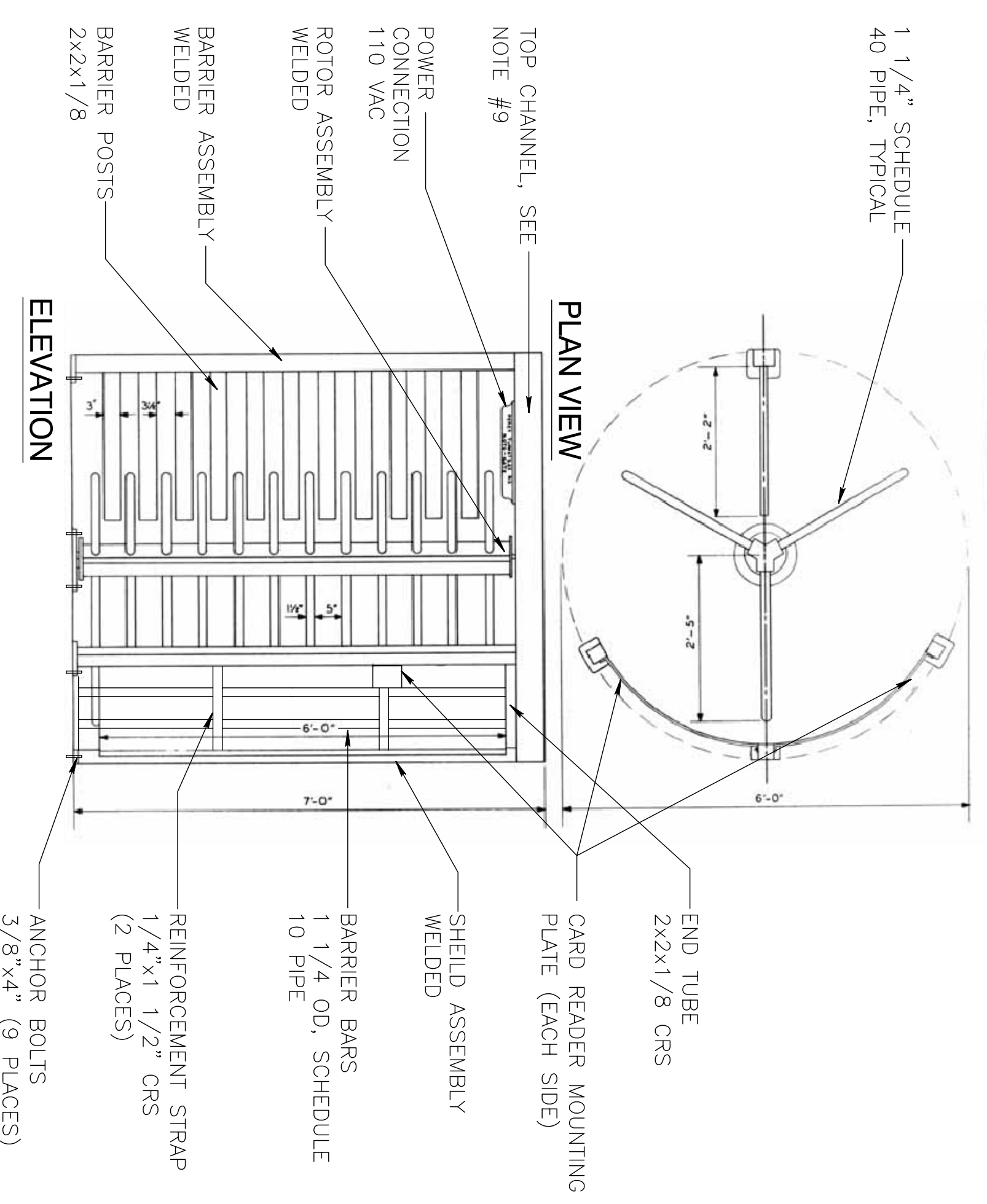


10
SINGLE LEAF SWING GATE DETAIL
NOT TO SCALE
C1.1



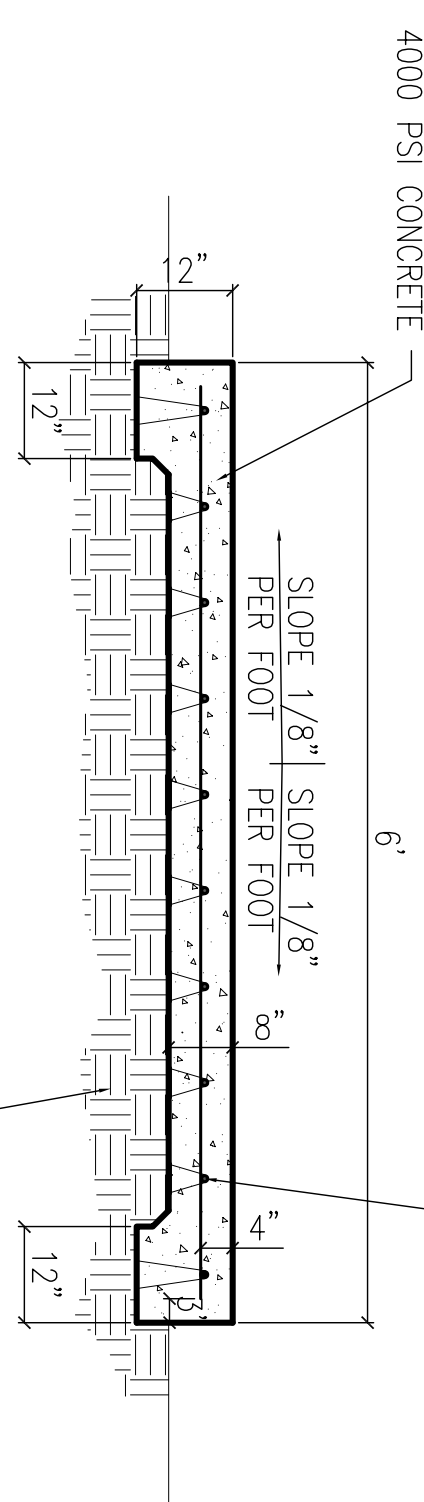
11
TURNSTILE ISOMETRIC
NOT TO SCALE
C1.1



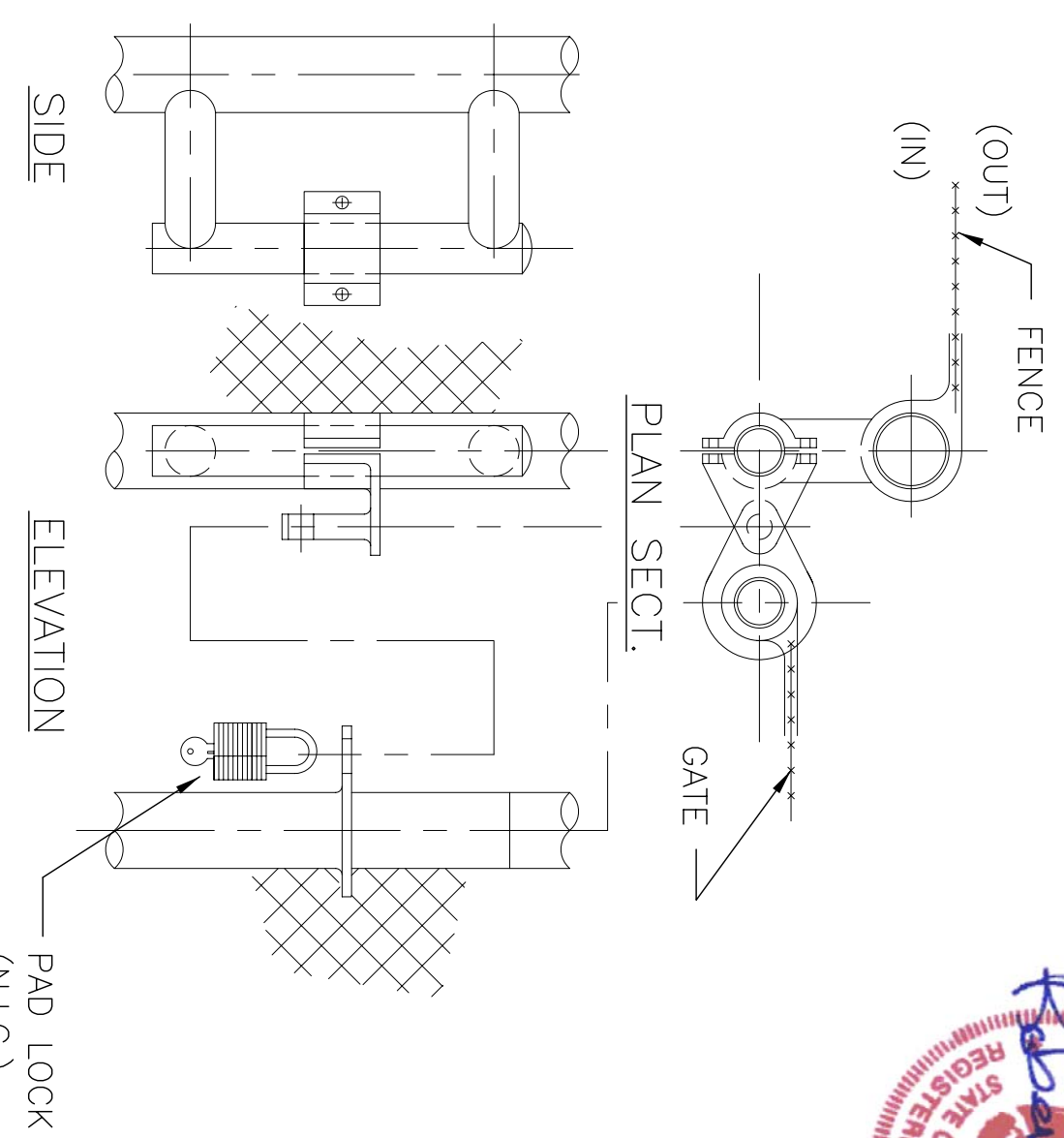
12
TURNSTILE PLAN & ELEVATION
NOT TO SCALE
C1.1

TURNSTILE NOTES

1. TURNSTILE SHALL BE COMPOSED OF CARBON STEEL. ALL MATERIALS SHALL BE HOT-DIPPED GALVANIZED IN ACCORDANCE WITH ASTM A123.
2. TURNSTILE SHALL HAVE BI-DIRECTIONAL CONTROLS. IN THE CASE OF A POWER FAILURE, OUTBOUND TRAFFIC SHALL BE SET TO "FAIL SAFE"; THE INBOUND TRAFFIC WILL HAVE A "FAIL LOCK" MECHANISM (UNLESS OTHERWISE DIRECTED BY THE CONTRACTING OFFICER).
3. PROVIDE CARD READER MOUNTING PLATES FOR BOTH SIDES (INBOUND & OUTBOUND) OF TURNSTILE. CARD READER WILL BE INSTALLED BY THE ACTIVITY AT A LATER DATE.
4. BRACE BARRIER POST AT TOP TO ADJACENT VERTICAL SURFACE.
5. ALLOW 5 INCH CLEARANCE ABOVE TOP OF TURNSTILE TO REMOVE LIFT-OFF TYPE TOP COVER.
6. CONCRETE MOUNTING SLAB MUST BE LEVEL WITHIN 1/4". SEE DETAIL OF CONCRETE MOUNTING PAD.
7. CONTRACTOR SHALL PROVIDE AN ELECTRICAL 3-ROTOR FULL HEIGHT TURNSTILE AS MANUFACTURED BY TOMSED, MODEL TH1-100ECP(3), OR APPROVED EQUAL.
8. TURNSTILE SHALL HAVE FINISH TO MATCH ADJACENT FENCEWORK: POLYVINYL CHLORIDE (PVC) COATING (GREEN) OVER ZINC-COATED STEEL FENCE COMPONENTS.
9. INSTALL 2 STRANDS OF BARBED WIRE WITH CONCERTINA WIRE (SAME AS FENCE) OVER TOP CHANNEL OF TURNSTILE (BETWEEN ADJACENT FENCE POSTS) TO HINDER SCALING UNIT.



A
TURNSTILE MOUNTING SLAB
NOT TO SCALE
C1.6



13
GATE LATCH DETAIL
NOT TO SCALE
C1.6



<p>DEPARTMENT OF THE NAVY NAVAL FACILITIES ENGINEERING COMMAND SOUTHEAST NAVAL AIR STATION JACKSONVILLE MISSISSIPPI JOHN C. STENNIS SPACE CENTER SOF OPERATIONS AND COMBATANT CRAFT OPERATIONS FACILITY - PRE-FINAL SITE CIVIL DETAILS</p>	<p>DES. R. WILSE CHECKED BY: R. WILSE DRAWN: J. LOOBE PROJECT NO. 1502659 SHEET 12 OF 132</p>	<p>EMMETT B. DAMMON LICENSED PROFESSIONAL ENGINEER STATE OF MISSISSIPPI 9822</p>	<p>DAMMON ENGINEERING, INC. ENGINEER 1001 W. GARDNER STREET DAMMON, LA 70601 PHONE: 649-5302 FAX: 649-5302</p>	<p>NAVFAC NAVAL FACILITIES ENGINEERING COMMAND SOUTHEAST NAVAL AIR STATION JACKSONVILLE MISSISSIPPI</p>	<p>REVISED AS PER URS COMMENTS 9 OCTOBER 2009</p>	<p>11-6-09</p>	<p>RW</p>	<p>APPR</p>
--	---	--	--	---	---	----------------	-----------	-------------