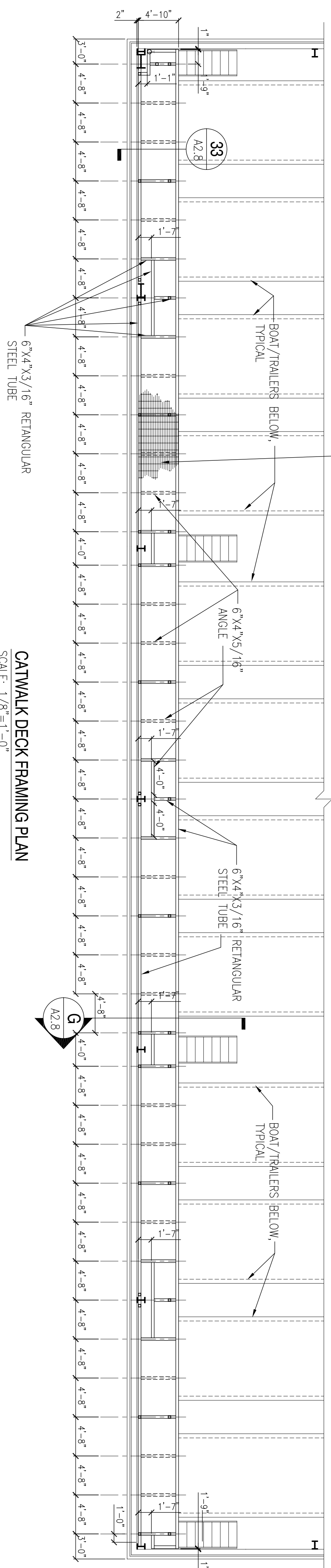
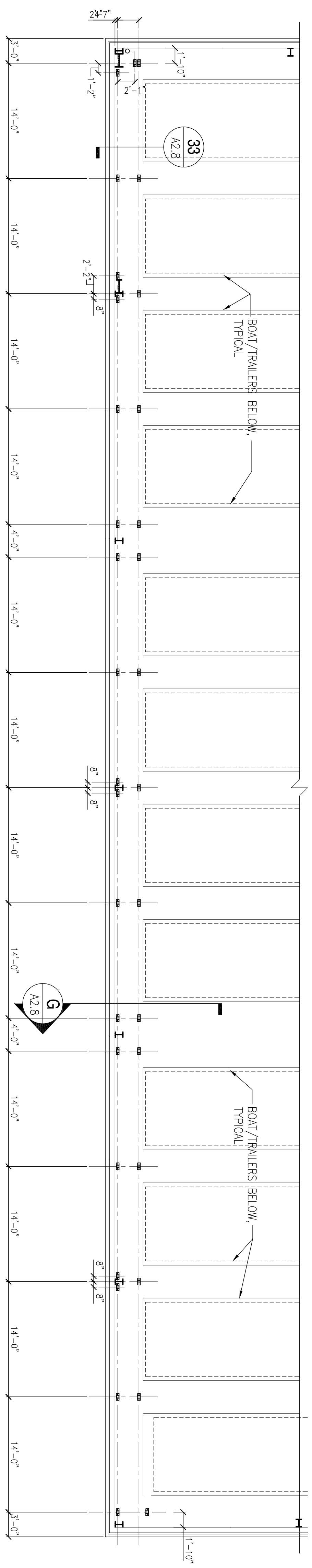
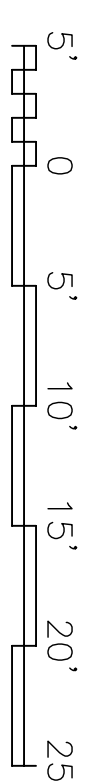


FLOOR GRATING SHALL BE LIGHT DUTY WELDED
STL. "SERRATED" BAR GRATING
MAXIMUM SPAN SHALL BE 6 FOOT

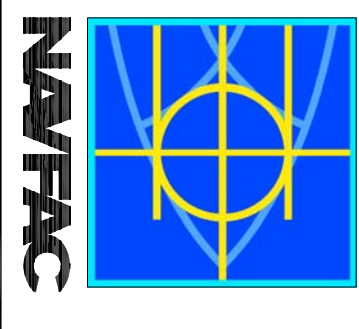


CATWALK DECK FRAMING PLAN
SCALE: 1/8"=1'-0"



CATWALK COLUMN LAYOUT
SCALE: 1/8"=1'-0"

SYM	DESCRIPTION	DATE	APPR



DAMMON
ENGINEERING, INC.
REGISTERED PROFESSIONAL ENGINEER
STATE OF MISSISSIPPI
NO. 44112
1506723
DAMMON, P. E. OF MISSISSIPPI
1506723
SCHOOL, LA. 79088
(985) 649-5312
SEPTEMBER 4, 2009



DES. R. WILTSE
DRAW. J. LOOUE
REVIEWED BY: R. WILTSE
P/IN/CHK. T. ARBIB
CHECKED/ARCH. P. DAMMON

DEPARTMENT OF THE NAVY
NAVAL FACILITIES ENGINEERING COMMAND SOUTHEAST
NAVAL AIR STATION JACKSONVILLE
JOHN C. STENNIS SPACE CENTER MISSISSIPPI
SOF RIVERINE AND COMBATANT CRAFT OPERATIONS FACILITY - PRE-FINAL
BOAT STORAGE BLDG. 2442 CATWALK FRAMING PLAN

CODE ID: NO. N4412 | SIZE: 0
SCALE: AS SHOWN
DRAWING NO. #####
STA. PROJ. NO. P-210
WORK ORDER NO. 510247
CONSTR. CONTR. NO. N62467-05-0-0096
NAVFAC DRAWING NO. 1506723
SHEET 76 OF 132



DESIGNED BY: R. WILTSE
DRAWN BY: J. LOOUE
CHECKED BY: T. ARBIB
DATE: 01 JAN 2009

REVDATE:

1 2 3 4 5

A B C D