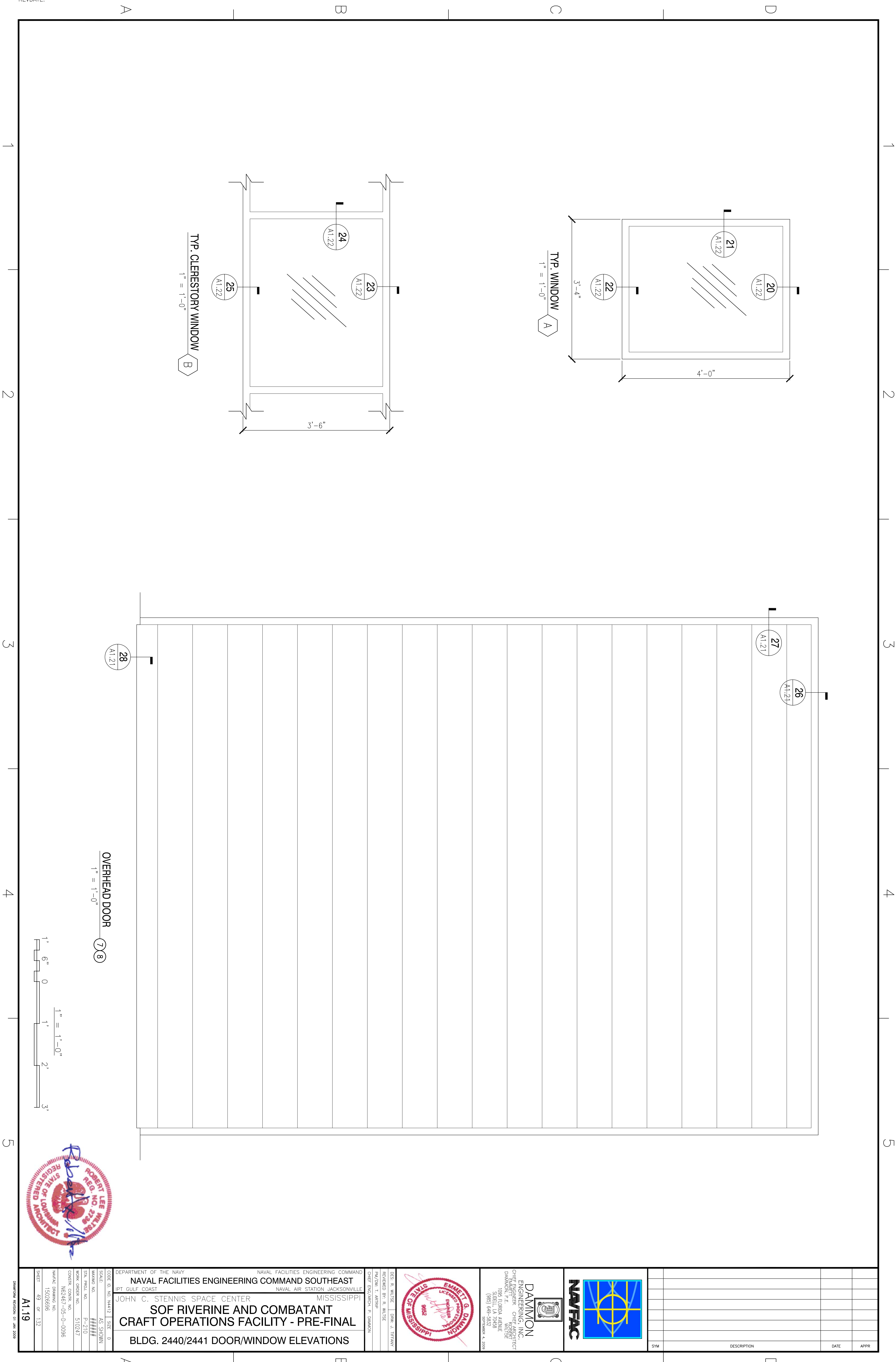
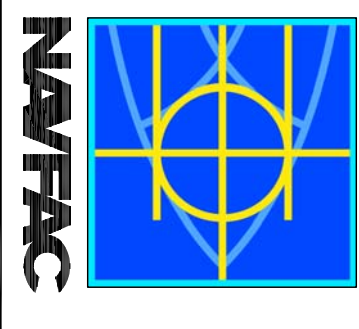



REVDATE:



1 2 3 4 5

A B C D

		<p> <b>DAMMON</b>  <b>ENGINEERING, INC.</b>          1000 W. UNIVERSITY BLVD.          SUITE 200          DARMON, LA 70028          (985) 649-5312  <small>ESTABLISHED 1978</small> </p>	<p> <small>DESIGNED BY: R. WILTSE</small>  <small>DRAWN BY: J. MIFANAY</small>  <small>CHECKED BY: T. ARBIB</small>  <small>DATE: 01/13/2019</small> </p>	<p> <small>DEPARTMENT OF THE NAVY</small>  <b>NAVAL FACILITIES ENGINEERING COMMAND SOUTHEAST</b>  <small>NAVAL AIR STATION JACKSONVILLE</small>          MISSISSIPPI  <b>SOF RIVERINE AND COMBATANT CRAFT OPERATIONS FACILITY - PRE-FINAL</b>  <b>BLDG. 2440/2441 DOOR/WINDOW ELEVATIONS</b> </p>	<p> <small>CODE ID: NO. N4412   SIZE: 0</small>  <small>SCALE: AS SHOWN</small>  <small>DATE: 01/13/2019</small>  <small>WORK ORDER NO.: 510247</small>  <small>CONTRACT NO.: N62467-05-0-0096</small>  <small>NAVFAC DRAWING NO.: 15002696</small>  <small>DATE: 01/13/2019</small> </p>
---	--	--	---	---	---

A1.19

A B C D