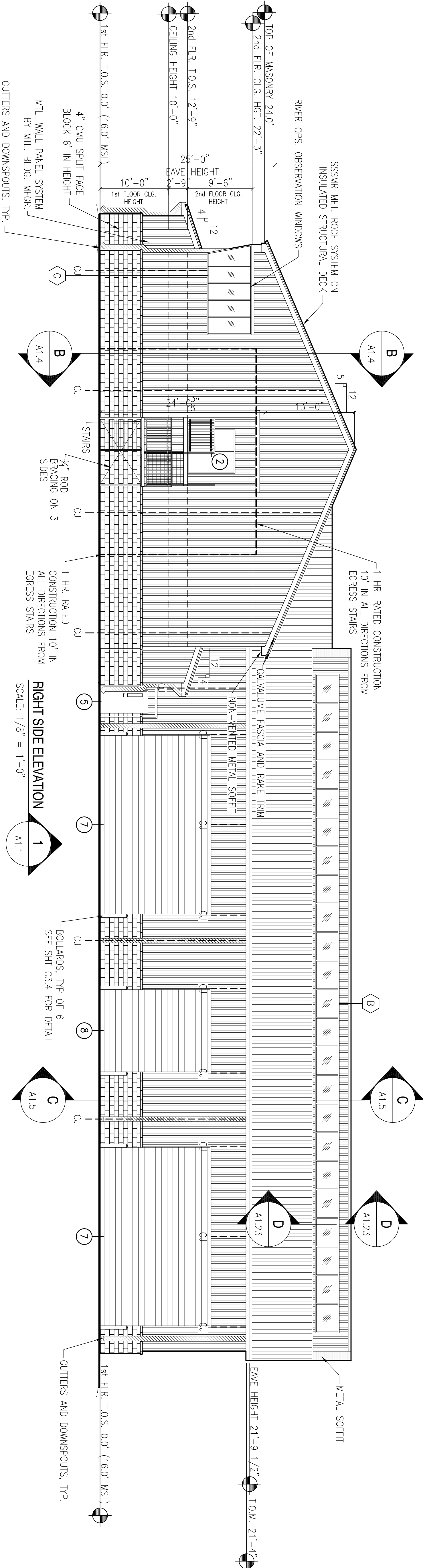


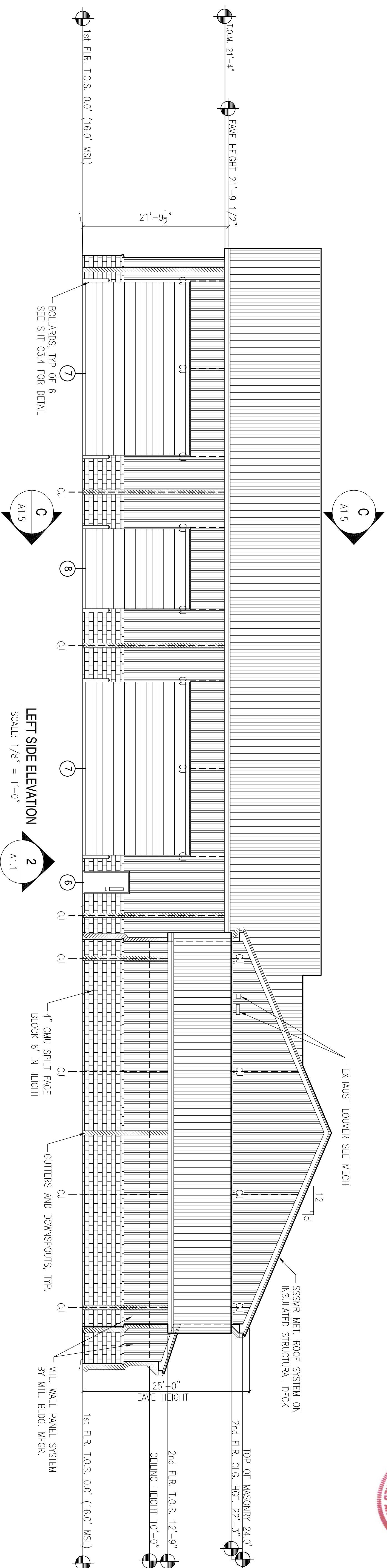
1 2 3 4 5

A B C D

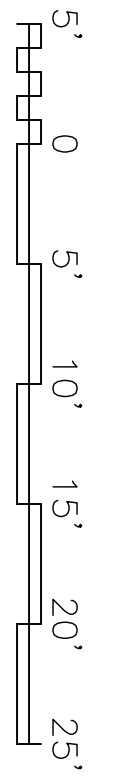
A B C D



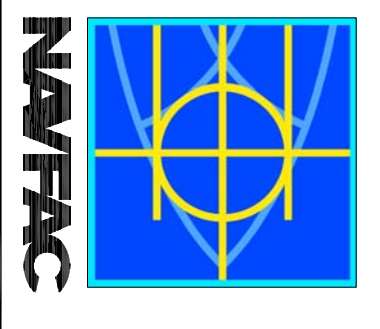
**RIGHT SIDE ELEVATION**  
SCALE: 1/8" = 1'-0"



**LEFT SIDE ELEVATION**  
SCALE: 1/8" = 1'-0"



**DAMMON ENGINEERING, INC.**  
ENGINEERING  
1000 W. UNIVERSITY BLVD.  
SUITE 100  
DAMMON, LA 70608  
(981) 649-5312



SYM	DESCRIPTION	DATE	APPR

DEPARTMENT OF THE NAVY  
NAVAL FACILITIES ENGINEERING COMMAND SOUTHEAST  
NAVAL AIR STATION JACKSONVILLE  
MISSISSIPPI  
JOHN C. STENNIS SPACE CENTER  
**SOF RIVERINE AND COMBATANT CRAFT OPERATIONS FACILITY - PRE-FINAL**  
OPS./MAINT. BLDG. 2440/2441 ELEVATIONS

DESIGNER: ROBERT LEE WILSEY  
CHECKED BY: ROBERT LEE WILSEY  
DRAWN BY: J. JEFFREY  
PROJECT MANAGER: T. J. JARVIS  
CHIEF ENGINEER: P. DAMMON

STATE OF MISSISSIPPI  
EMMET B. DAMMON  
LICENSED PROFESSIONAL ENGINEER  
MECHANICAL  
9652

STATE OF LOUISIANA  
ROBERT LEE WILSEY  
LICENSED PROFESSIONAL ENGINEER  
MECHANICAL  
2136

NAVFAC  
NAVFAC ENGINEERING NO. 150026885  
WORK ORDER NO. 510247  
CONSTR. CONTR. NO. N62467-05-0-0096  
SCALE: AS SHOWN  
SHEET 38 OF 132