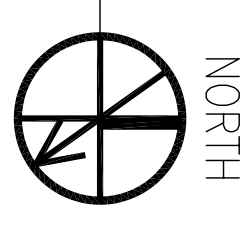
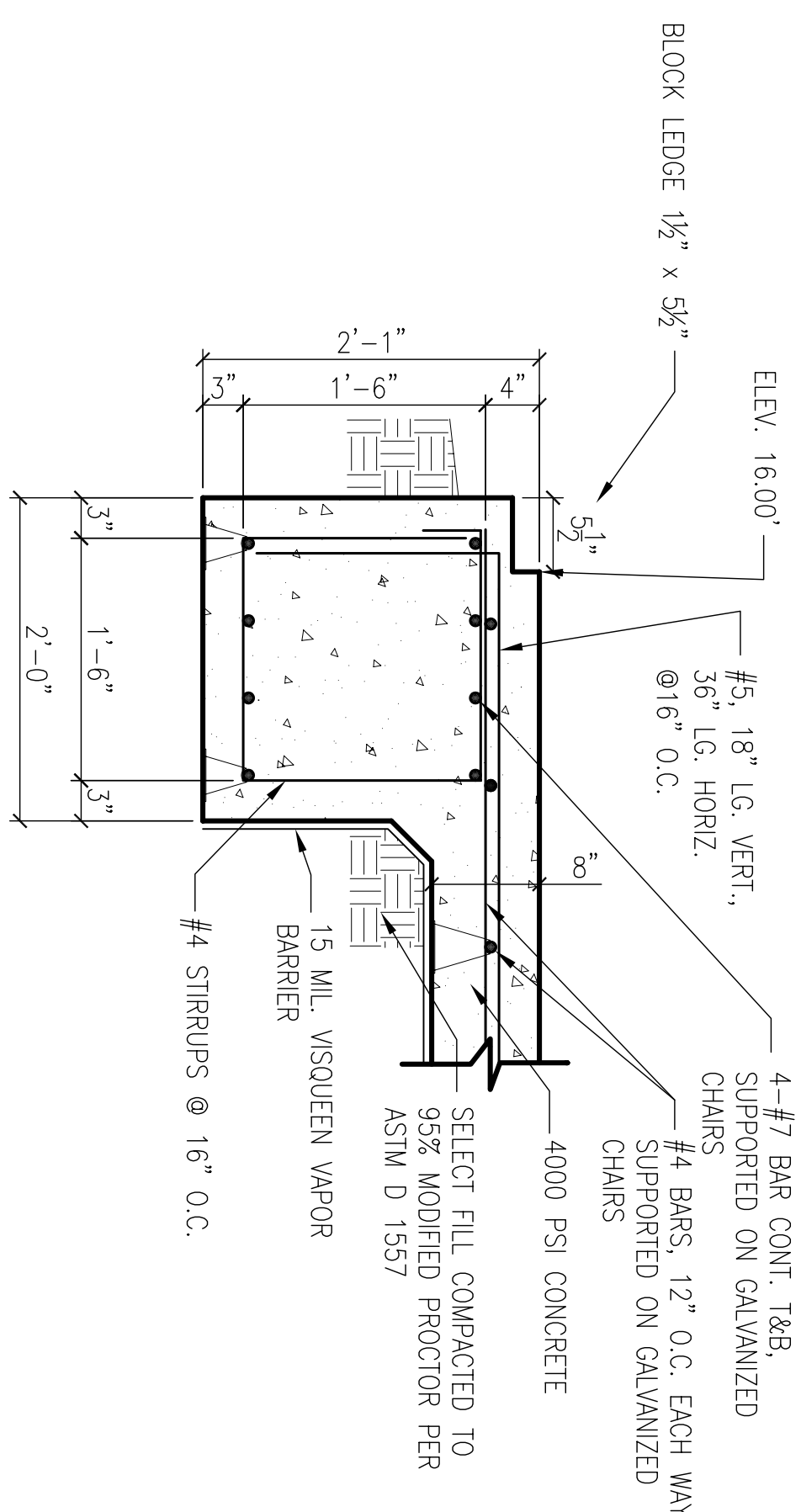


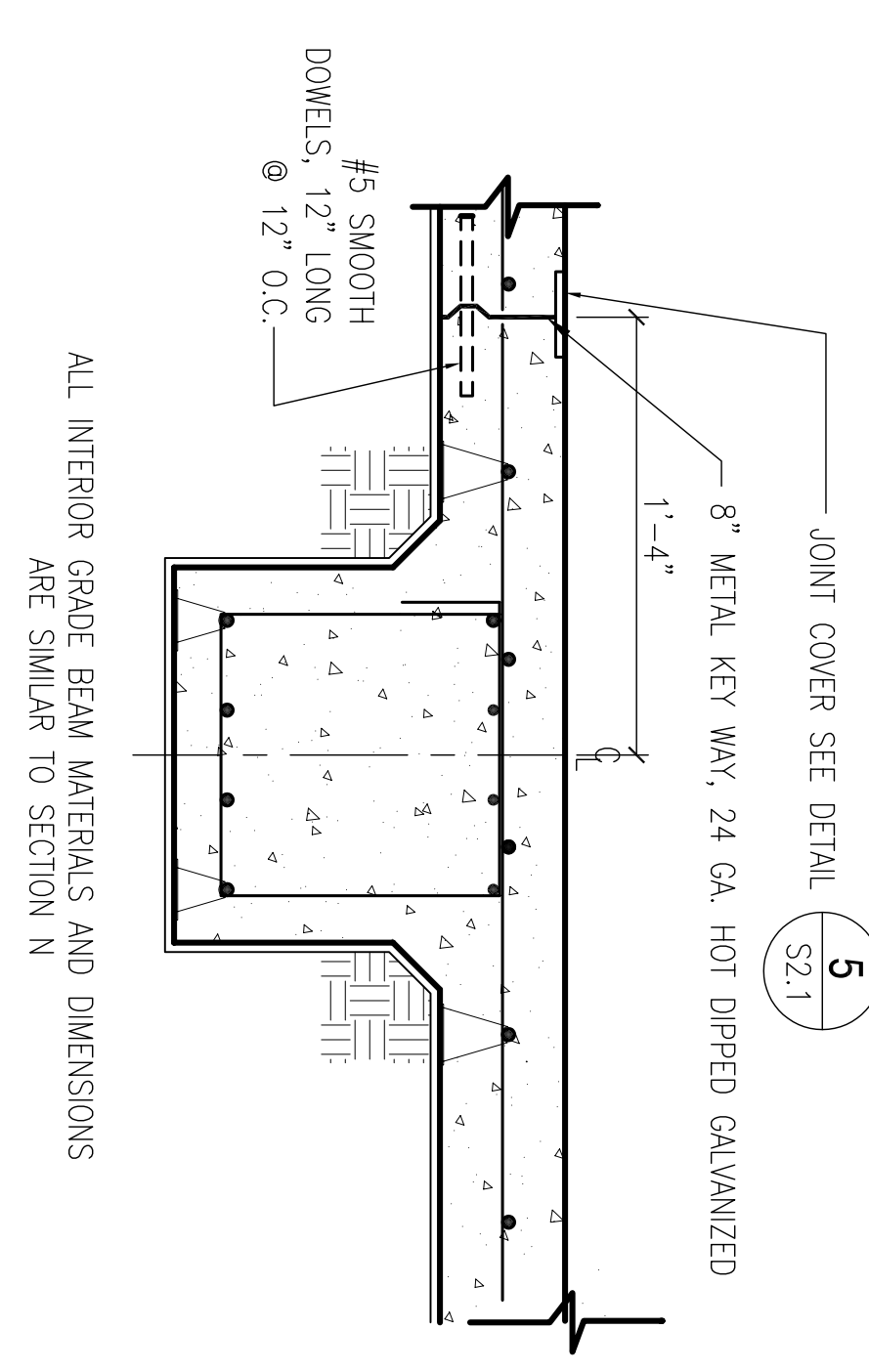
BOAT STORAGE BLDG. 2442 FOUNDATION PLAN
SCALE: 3/8"=1'-0"



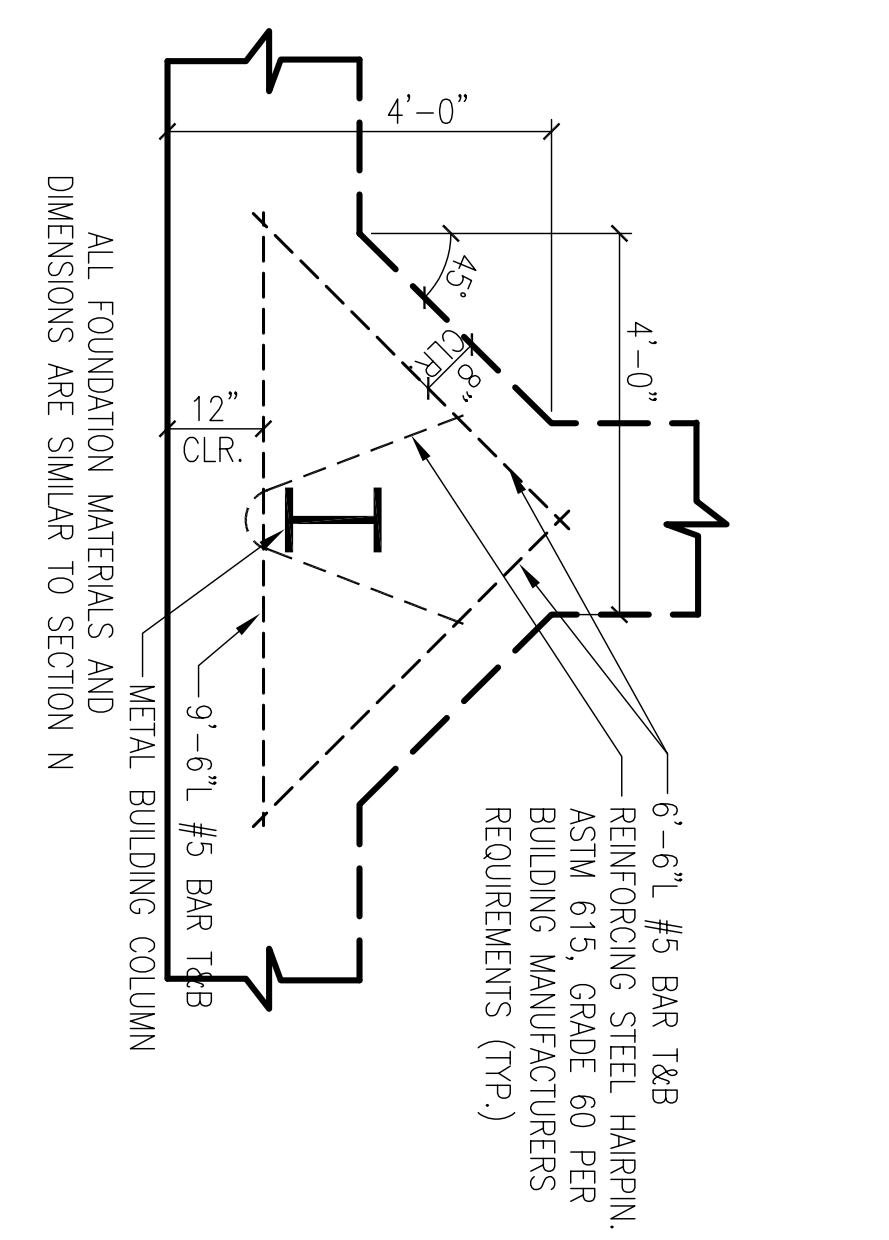
SECTION N
SCALE: 1"=1'-0" S2.1



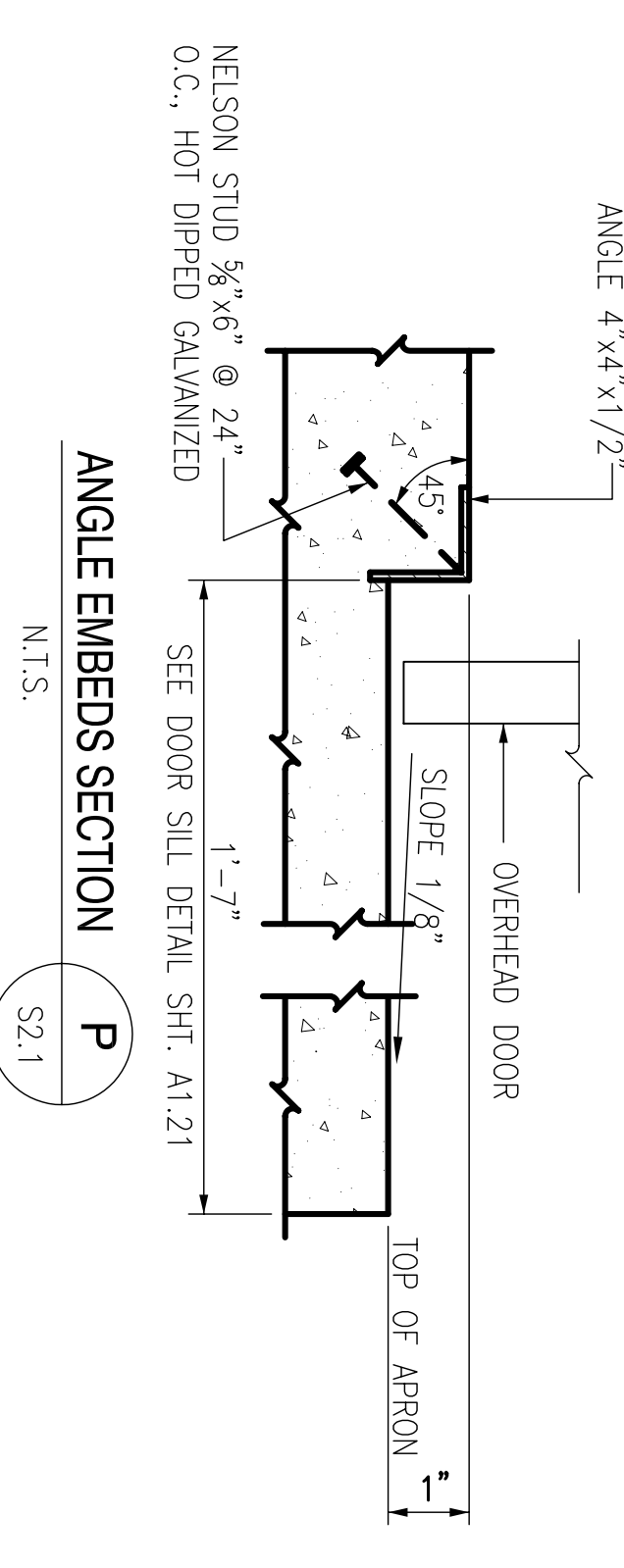
CONTROL JOINT SECTION Q
SCALE: 1"=1'-0" S2.1



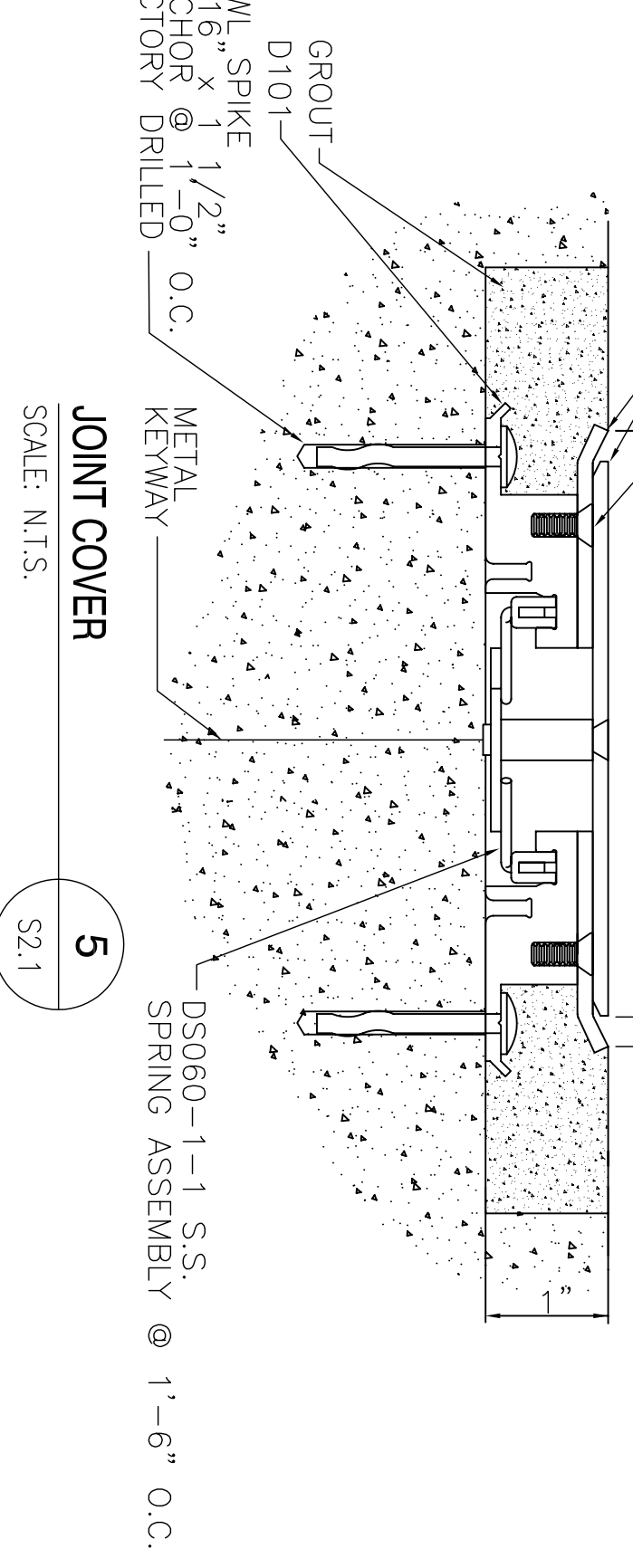
FOOTING @ COLUMN DETAIL 4
SCALE: 1/2"=1'-0" S2.1



ANGLE EMBEDS SECTION P
SCALE: N.T.S. S2.1



JOINT COVER 5
SCALE: N.T.S. S2.1



REVDATE:

A B C D

1

2

3

4

5

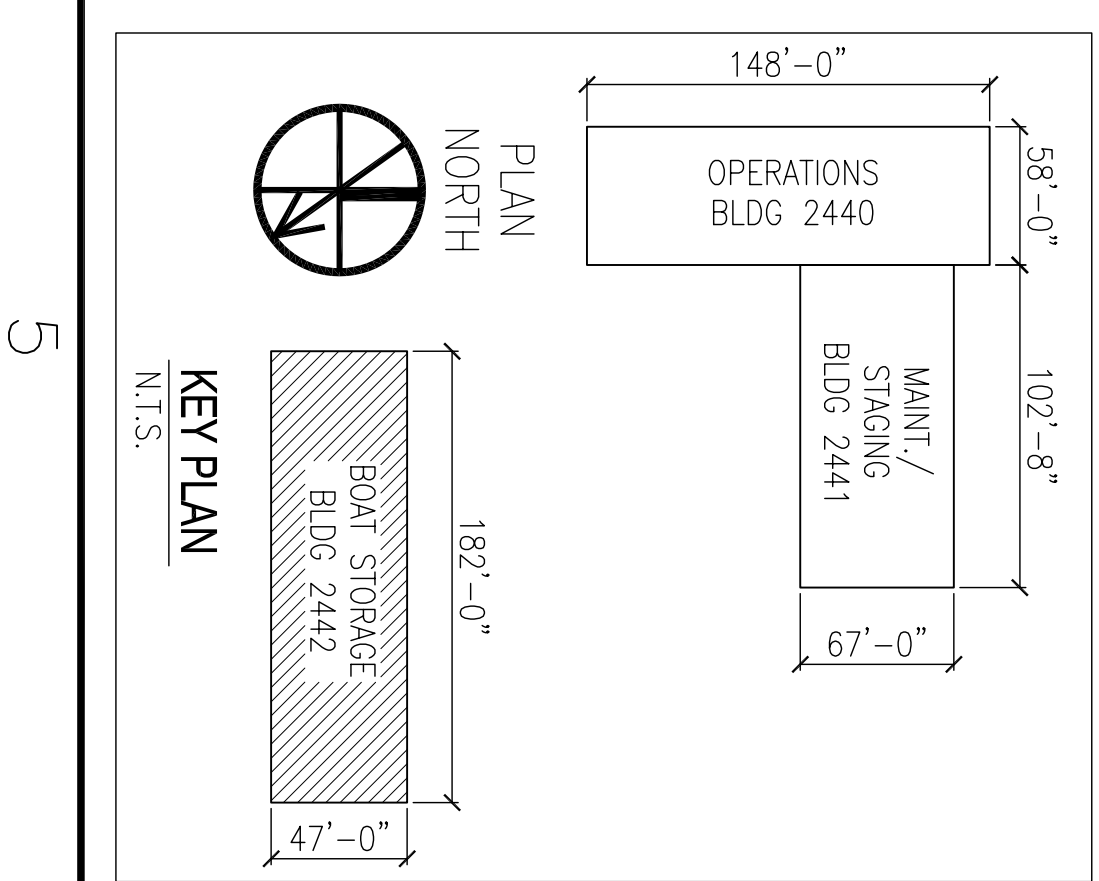
1

2

3

4

5



<p>DEPARTMENT OF THE NAVY NAVAL FACILITIES ENGINEERING COMMAND SOUTHEAST IPT GULF COAST</p> <p>JOHN C. STENNIS SPACE CENTER MISSISSIPPI</p> <p>SOF RIVERINE AND COMBATANT CRAFT OPERATIONS FACILITY - PRE-FINAL</p> <p>STORAGE BLDG. 2442 FOUNDATION PLAN</p>	<p>NAVAL FACILITIES ENGINEERING COMMAND NAVAL AIR STATION JACKSONVILLE</p> <p>DESIGNED BY: R. MILLER DRAWN BY: T. ARP CHECKED BY: P. DAMMON IN CHARGE: P. DAMMON</p>	<p>EMMETT B. DAMMON REGISTERED PROFESSIONAL ENGINEER STATE OF MISSISSIPPI LICENSE NO. 9862</p>	<p>DAMMON ENGINEERING, INC. REGISTERED PROFESSIONAL ENGINEER DAMMON, P. E. GENA, M.S.E. SIBELL, L.A. M.S.E. (985) 649-5312</p>	<p>NAVFAC</p>	<table border="1"> <thead> <tr> <th>SYM</th> <th>DESCRIPTION</th> <th>DATE</th> <th>APPR</th> </tr> </thead> <tbody> <tr> <td> </td> <td> </td> <td> </td> <td> </td> </tr> <tr> <td> </td> <td> </td> <td> </td> <td> </td> </tr> <tr> <td> </td> <td> </td> <td> </td> <td> </td> </tr> </tbody> </table>	SYM	DESCRIPTION	DATE	APPR												
SYM	DESCRIPTION	DATE	APPR																		

SCALE: 3/8"=1'-0"

A B C D