

- Part Mark Key
- 1 P500
  - 2 GFA106
  - 3 J221 (See )
  - 4 P502
  - 5 J221
  - 6 RECH10001
  - 7 RECH11015

Sag Angle Schedule

Id	Qty	Mark No	Spacing
1	12	SA3113(X-ing)	3'-8 3/4"
2	2	SA1076	1'-5 13/16"
3	2	SA3072	3'-5 5/16"
4	8	SA5017	5'-0"
5	2	SA4113	4'-9 7/16"
6	20	SA5024(X-ing)	5'-0"
7	4	SA2050(X-ing)	2'-1 13/16"
8	4	SA4052(X-ing)	4'-2 11/16"
9	12	SA3046(X-ing)	3'-2"
10	2	SA3001	2'-10 3/16"
11	2	SA2036	2'-1 13/16"
12	2	SA4045	4'-2 11/16"

See SED: BR09A4 for installation  
See SED: BR09A5 for installation of X-ing

Secondary Part Schedule

Mark Part	Thick.	Depth	Lap
000S21015140	1200	11	1/2"
000S24104140	1200	11	1/2"
000S27104140	1200	11	1/2"
000S31080140	1200	11	1/2"
E201 01S2911414	0.0820	11	1/2"
E203 01S1103416	0.0650	11	1/2"
E208 46S3802414	0.0820	11	1/2"4'-0"
E215 001S32050140	0.0820	11	1/2"
E216 002S12050160	0.0650	11	1/2"
E221 01S2902411	0.1200	11	1/2"
E222 01S2903011	0.1200	11	1/2"
E223 01S1001416	0.0650	11	1/2"
J221 001J04114170	0.0590	8	1/2"
P204 01S1109416	0.0650	11	1/2"
P205 006S32070110	1200	11	1/2"2'-0"
P206 42S3402411	0.1200	11	1/2"2'-0"
P213 42S3402414	0.0820	11	1/2"2'-0"
P231 46S3802411	0.1200	11	1/2"4'-0"
P262 020S12110160	0.0650	11	1/2"
P376 013S34064160	0.0650	11	1/2"2'-0"
P378 46S3802416	0.0650	11	1/2"4'-0"
P379 015S34070110	1200	11	1/2"4'-0"
P380 016S32070160	0.0650	11	1/2"2'-0"
P417 017S19087160	0.0650	11	1/2"
P418 018S24010110	1200	11	1/2"
P419 019S21110140	0.0820	11	1/2"
P420 021S10014160	0.0650	11	1/2"
P460 003S23087110	1200	11	1/2"
P461 004S17040140	0.0820	11	1/2"
P462 005S13064160	0.0650	11	1/2"
P463 007S34064110	1200	11	1/2"2'-0"
P499 008S28100110	1200	11	1/2"
P500 009S02060160	0.0650	11	1/2"
P501 010S36064140	0.0820	11	1/2"4'-0"
P502 011S06086160	0.0650	11	1/2"
P503 012S34064140	0.0820	11	1/2"2'-0"
P504 014S28100110	1200	11	1/2"

- Dimension Key
- 1 1'-1 1/2" Rake Extension
  - 2 1'-1 1/2" Canopy
  - 3 6"
  - 4 1'-9"

1. UNLESS NOTED, USE 1/2 X 1 1/2 A-325 SNUG TIGHTENED BOLTS FOR PURLIN LAP, PURLIN TO FRAME, FLANGE BRACE TO FRAME, AND FLANGE BRACE TO PURLIN CONNECTIONS.

2. WIND, FLANGE, AND PURLIN BRACING ARE AN INTEGRAL PART OF THE ROOF STRUCTURAL SYSTEM AND SHOULD BE PROPERLY INSTALLED PRIOR TO ERECTION OF WALL AND ROOF SHEETS. REMOVAL OR ALTERATION OF ROOF BRACING WITHOUT PRIOR AUTHORIZATION IS PROHIBITED.

THE VP ENGINEER'S SEAL APPLIES ONLY TO THE WORK PRODUCT OF VP AND DESIGN AND PERFORMANCE REQUIREMENTS SPECIFIED BY VP. THE VP ENGINEER'S SEAL DOES NOT APPLY TO THE PERFORMANCE OR DESIGN OF ANY OTHER PRODUCT OR COMPONENT FURNISHED BY VP EXCEPT TO ANY DESIGN OR PERFORMANCE REQUIREMENTS SPECIFIED BY VP.

THIS DRAWING, INCLUDING THE INFORMATION HEREON, REMAINS THE PROPERTY OF VP BUILDINGS. IT IS PROVIDED SOLELY FOR ERECTING THE BUILDING DESCRIBED IN THE APPLICABLE PURCHASE ORDER AND SHALL NOT BE MODIFIED, REPRODUCED OR USED FOR ANY OTHER PURPOSE WITHOUT PRIOR WRITTEN APPROVAL OF VP BUILDINGS.

THE GENERAL CONTRACTOR AND/OR ERECTOR IS SOLELY RESPONSIBLE FOR ACCURATE, GOOD QUALITY WORKMANSHIP IN ERECTING THIS BUILDING IN CONFORMANCE WITH THIS DRAWING, DETAILS REFERENCED IN THIS DRAWING, ALL APPLICABLE VP ERECTION GUIDES, AND INDUSTRY STANDARDS PERTAINING TO PROPER ERECTION, INCLUDING THE CORRECT USE OF TEMPORARY BRACING.

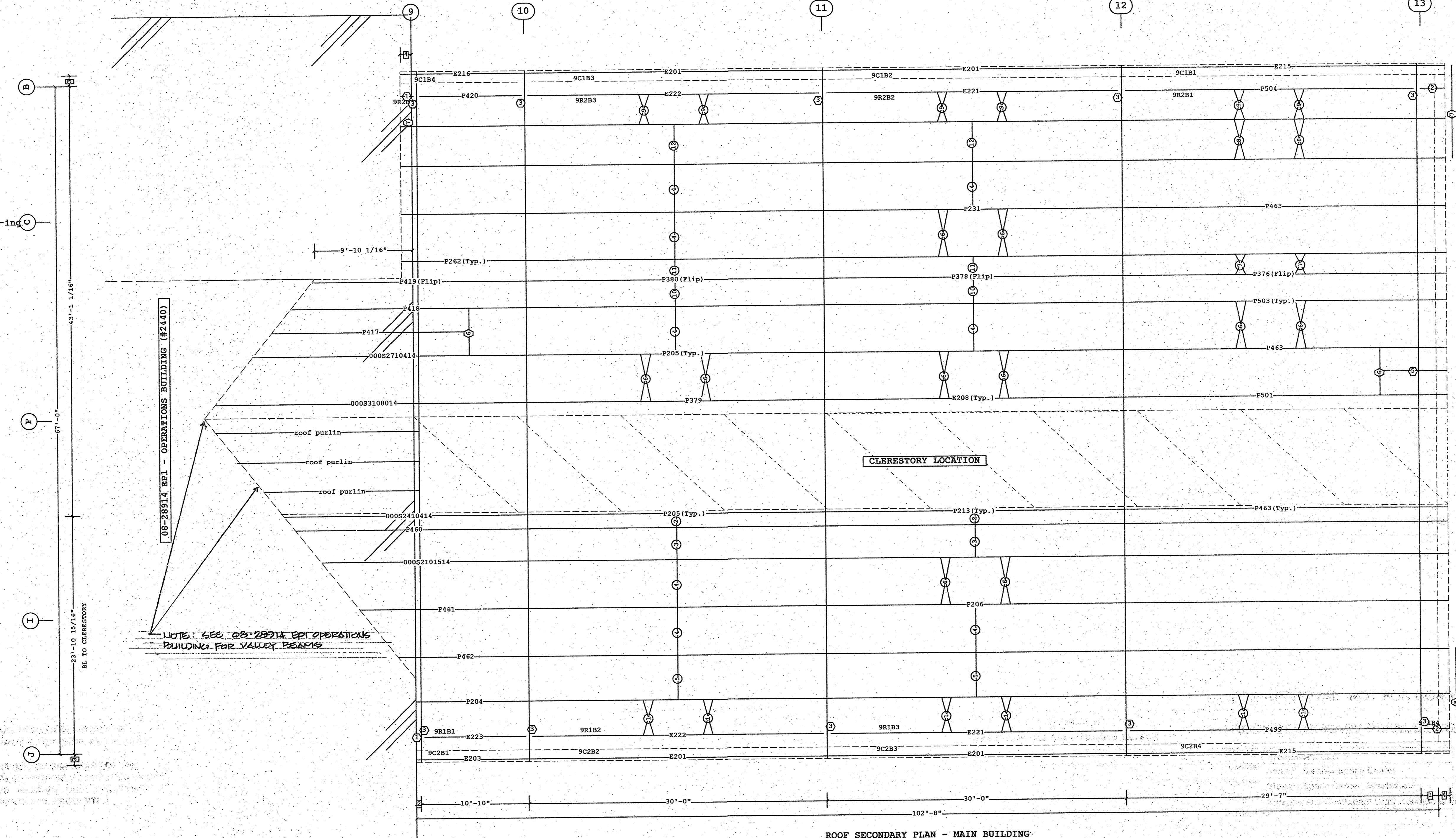
VP Buildings			
3200 Players Club Circle Memphis TN 38125			
REV	DATE	BY	DESCRIPTION
NTS			

FOR APPROVAL - NOT FOR CONSTRUCTION

ROOF SECONDARY PLAN - MAIN BUILDING

BUILDER	Broadmoor, LLC
CUSTOMER	John F. Stennis Space Center
LOCATION	Stennis Space Center, Mississippi
PROJECT	Riverine and Combatant Craft Operations Facility
BUILDERS PO#	

JOB NO.	08-28314 EP2
DATE	2/19/09
DRAWING CHECK	MJM
PAGE	14



ROOF SECONDARY PLAN - MAIN BUILDING

Shape Name = Maintenance Area, Shape = Maintenance Area, Shape = Maintenance Area