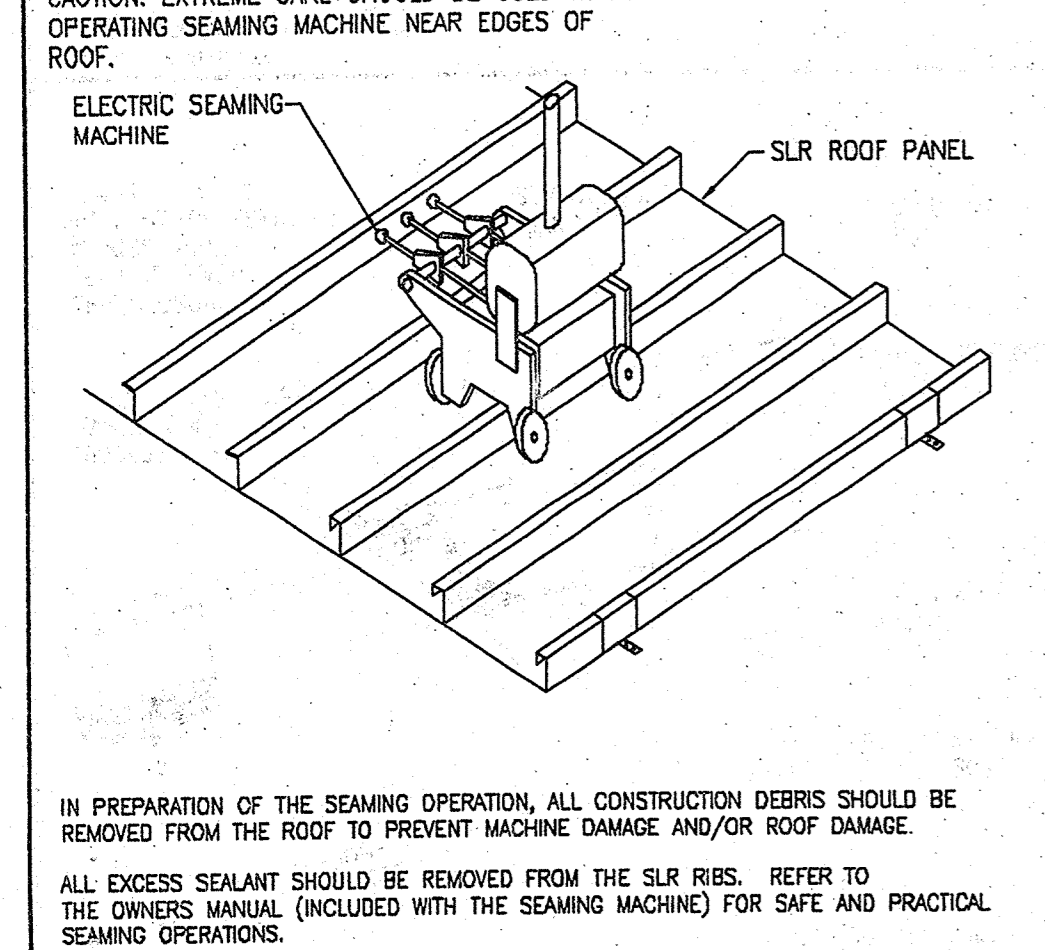
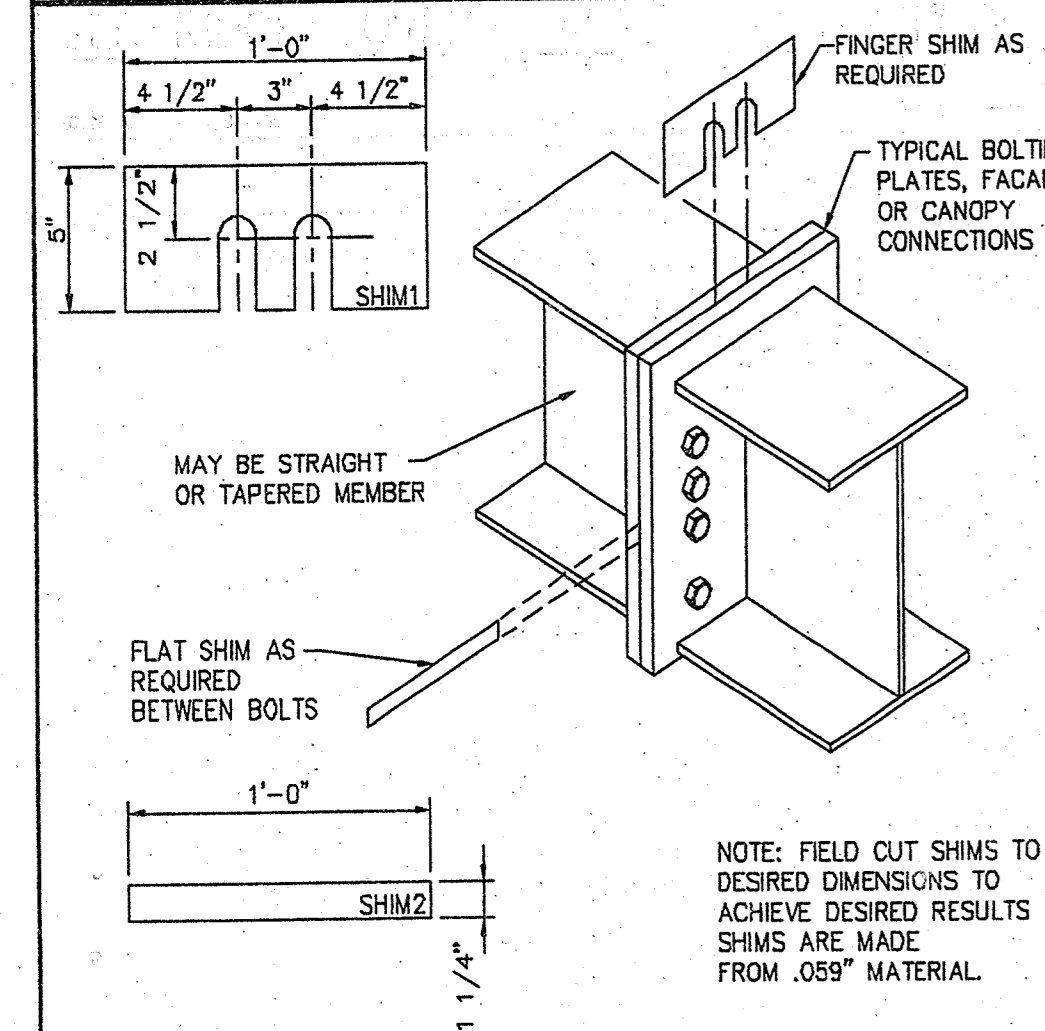


TYPICAL FLANGE BRACE CONNECTIONS **BR06BD**



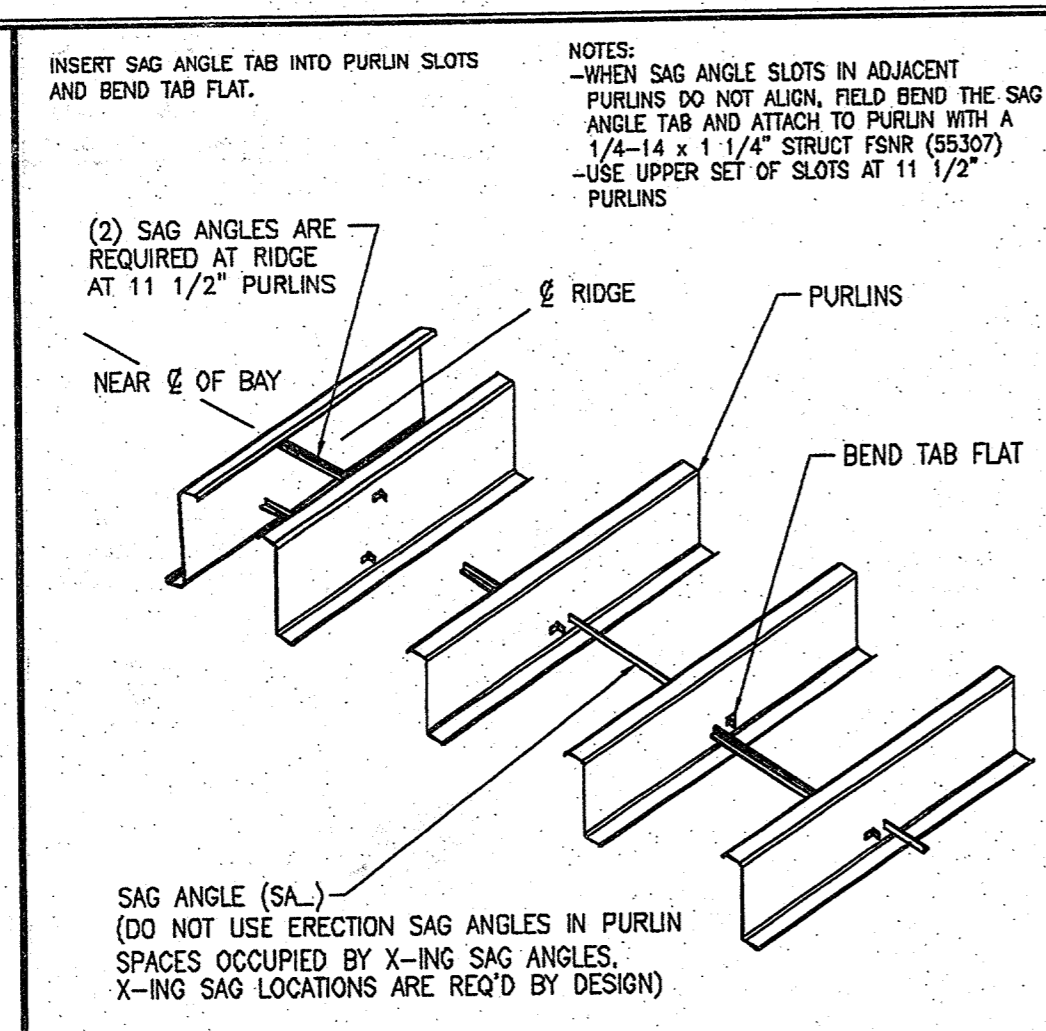
SLR SEAMING MACHINE DETAIL **EN01A1**

SLR ROOF **EN01A4**

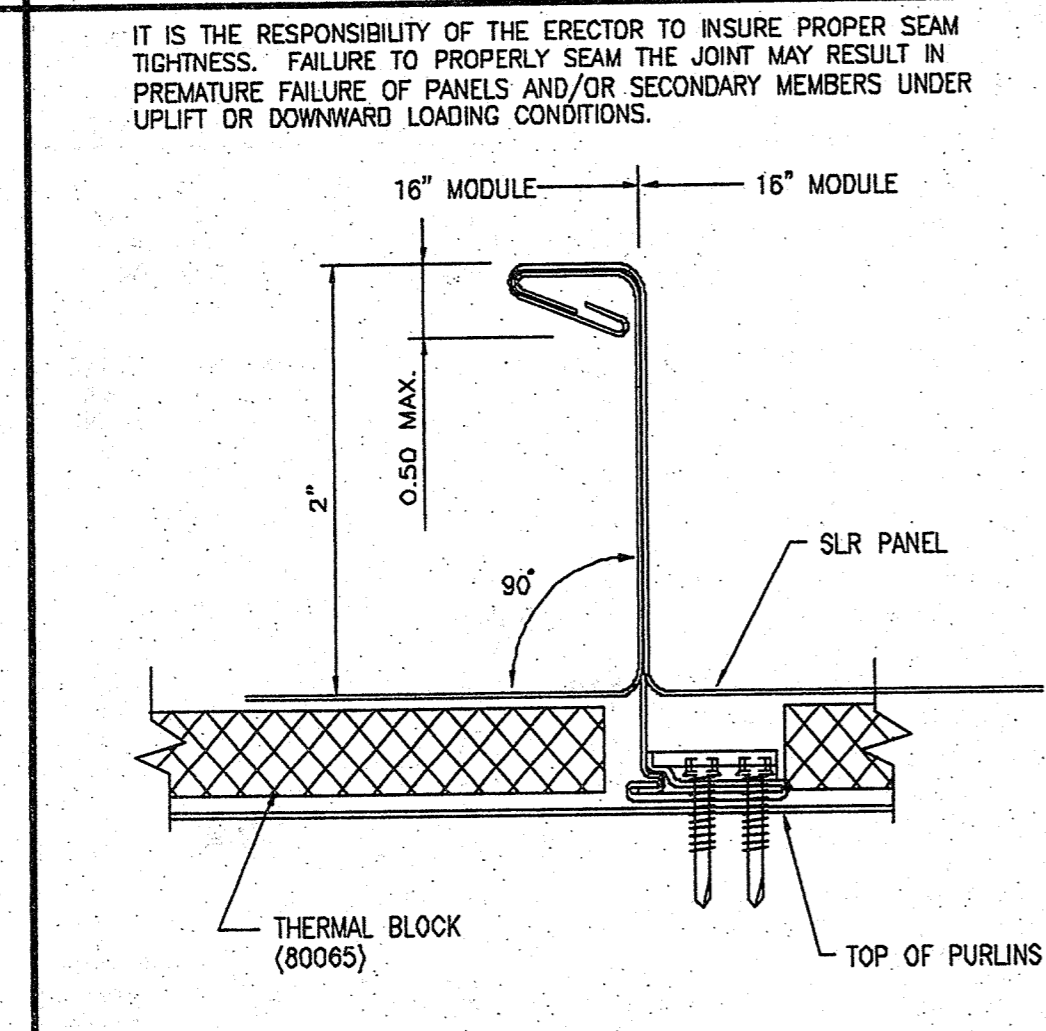


STANDARD SHIM PROCEDURE **EN20A1**

TYPICAL AT ANY BOLTED CONNECTION **EN20A2**

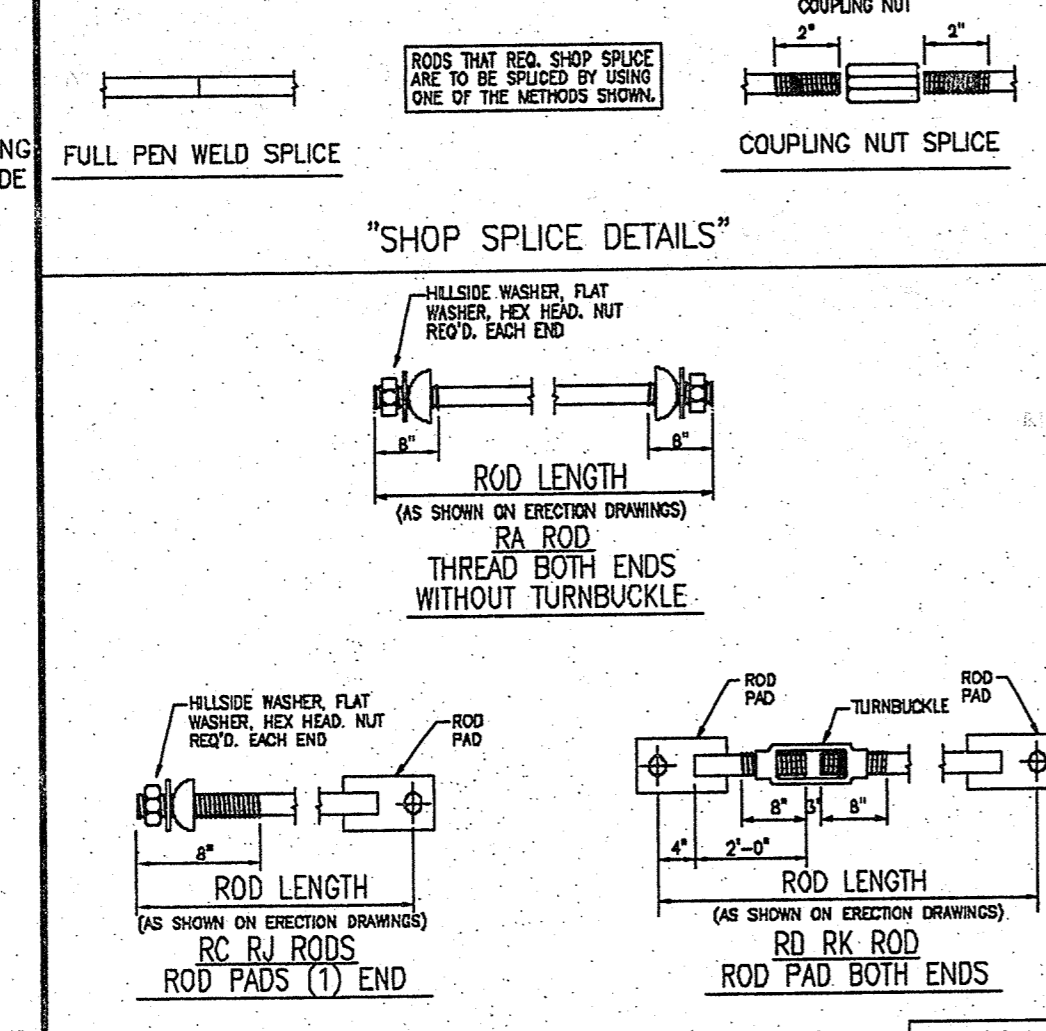


OPTIONAL ERECTION SAG ANGLES **BR09A4**



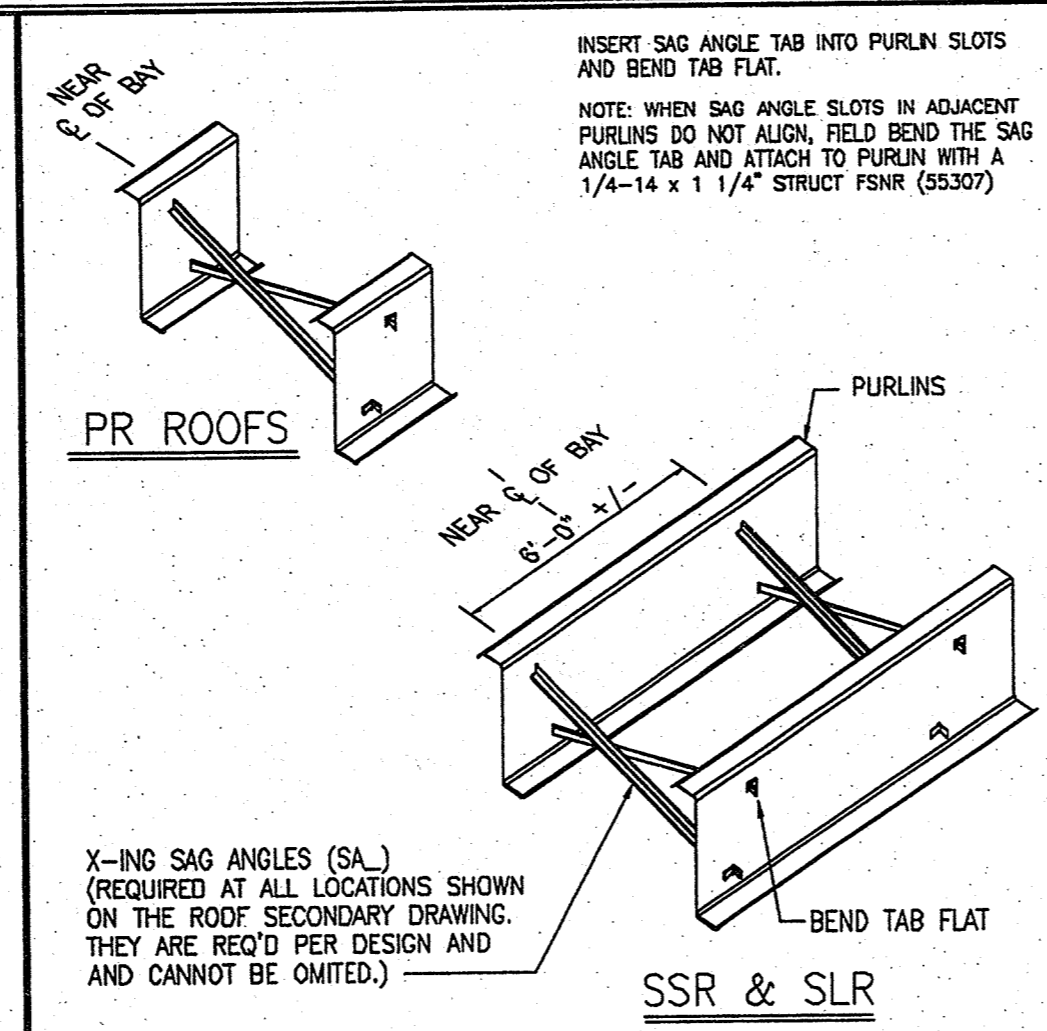
SLR SEAMING GUIDELINES **EN01A2**

RIB & SEAM PROFILE **EN01A3**

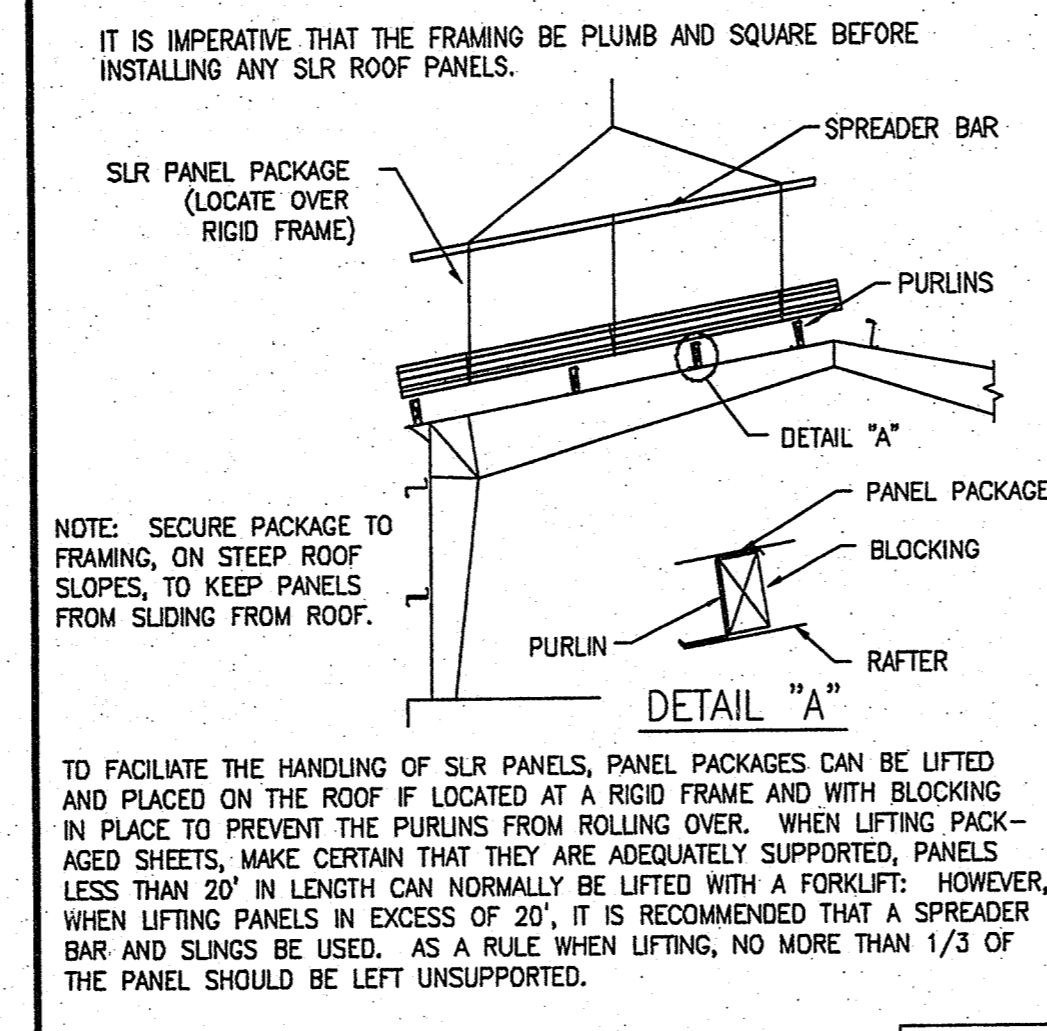


ROD BRACE ASSEMBLY DRAWING **EN30A1**

**EN30A2**



SAG ANGLES X-ING **BR09A5**



SLR PANEL PACKAGE HANDLING **EN01A3**

**EN01A4**

F = FEET G = GAGE  
 I = INCHES O = OPERATION  
 E = EIGHTHS C = FIN/COLOR

PANEL/COVERING  
 V I 3 1 1 7 2 6 1 K T D  
 \* F F I I E G G O C C C  
 LENGTH CODE

INSULATION  
 I B 1 3 0 1 0 3 6 0 3 0 V V  
 \* \* F F F I I I I I E C C  
 LENGTH WIDTH THK CODE

SECONDARY (STANDARD)  
 O 1 G 1 9 1 1 4 1 7  
 \* \* \* F F I I E G G  
 LENGTH CODE

SECONDARY (SPECIAL)  
 O 0 1 G 1 9 1 1 4 1 7  
 \* \* \* F F I I E G G  
 LENGTH CODE

ROD BRACING  
 O 3 R A 2 5 1 0  
 I E \* \* F F I I  
 DIA LENGTH

CX\*\*\* = COLUMN (PLATE)  
 CG\*\*\* = COLUMN (GAGE)  
 WC\*\*\* = COLUMN (HOTROLL)

RB\*\*\* = RAFTER (PLATE)  
 BG\*\*\* = RAFTER (GAGE)  
 WR\*\*\* = RAFTER (HOTROLL)  
 TR\*\*\* = TRUSS RAFTER

IC\*\*\* = INTERIOR COLUMN  
 PC\*\*\* = PIPE COLUMN  
 TC\*\*\* = TUBE COLUMN

EP\*\*\* = ENDPOST (PLATE)  
 EG\*\*\* = ENDPOST (GAGE)

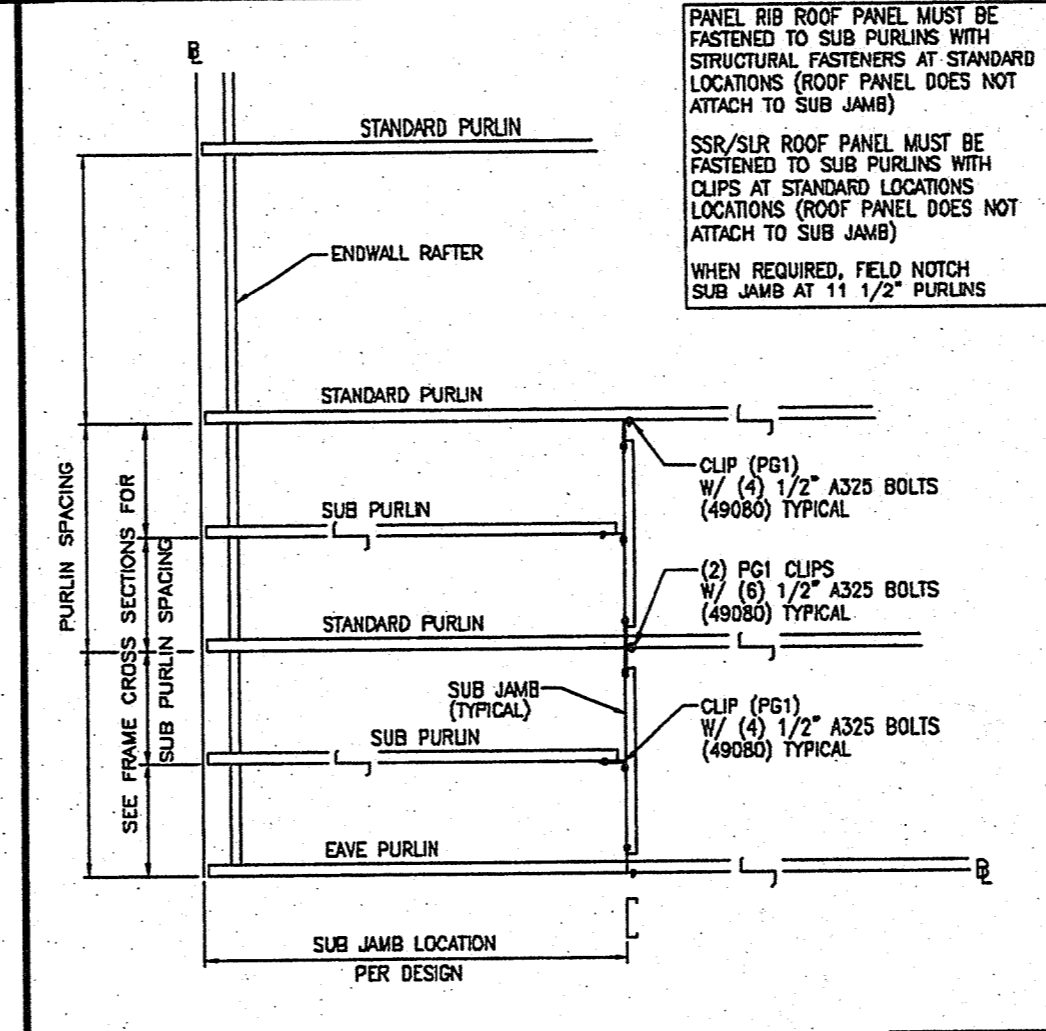
CB\*\*\* = CANOPY (PLATE)  
 DCCB\*\*\* = CANOPY (GAGE)  
 CB\*\*\* = PIGGYBACK CANOPY

Q1=SIMPLE INTERIOR  
 Q2=SIMPLE 1' END BAY  
 Q3=SIMPLE 6' END BAY  
 Q4=END HOLE ONLY  
 Q5=INSET NOTCH  
 Q6=NO HOLES

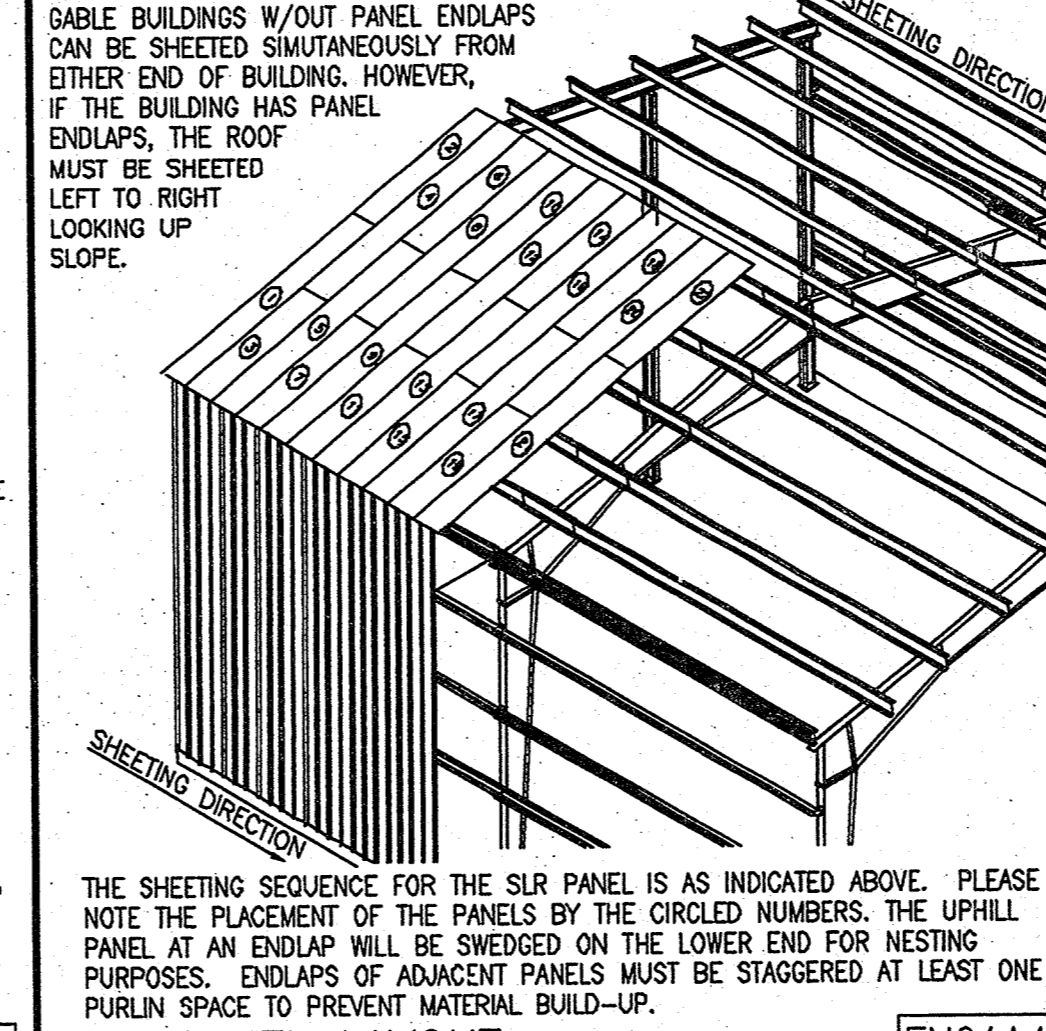
LAP	6'	1'	INTERIOR	MEMBER DEPTHS
	END BAY	END BAY	BAY	
1'-0"	20	30	40	6 1/2", 8 1/2"
1'-6"	21	31	41	6 1/2", 8 1/2"
2'-0"	22	32	42	6 1/2", 8 1/2", 11 1/2"
3'-0"	24	34	44	6 1/2", 8 1/2", 11 1/2"
4'-0"	26	36	46	6 1/2", 8 1/2", 11 1/2"

MARK NUMBER KEY **EN50A1**

COMMON GENERATED MARK NUMBERS **EN50A2**

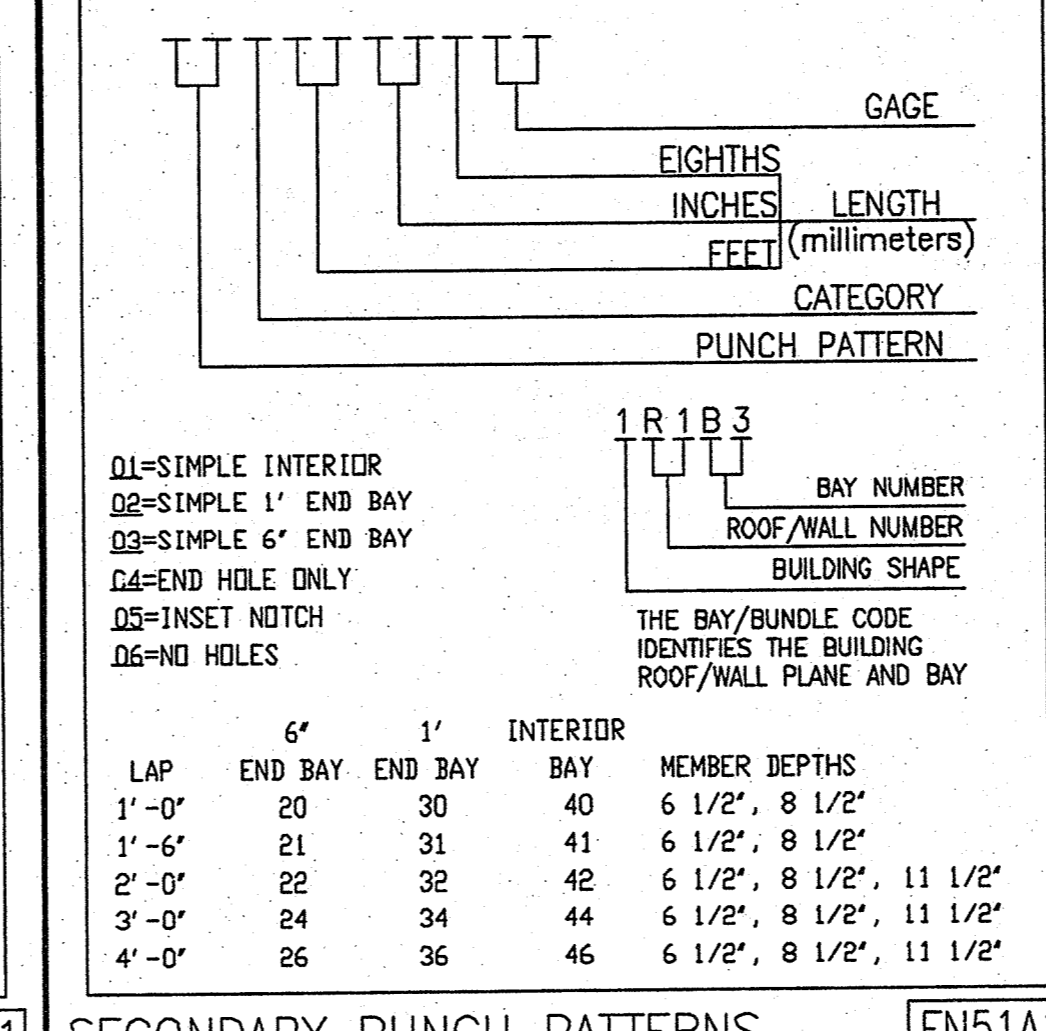


CORNER ZONE BRACING **BR09HE**



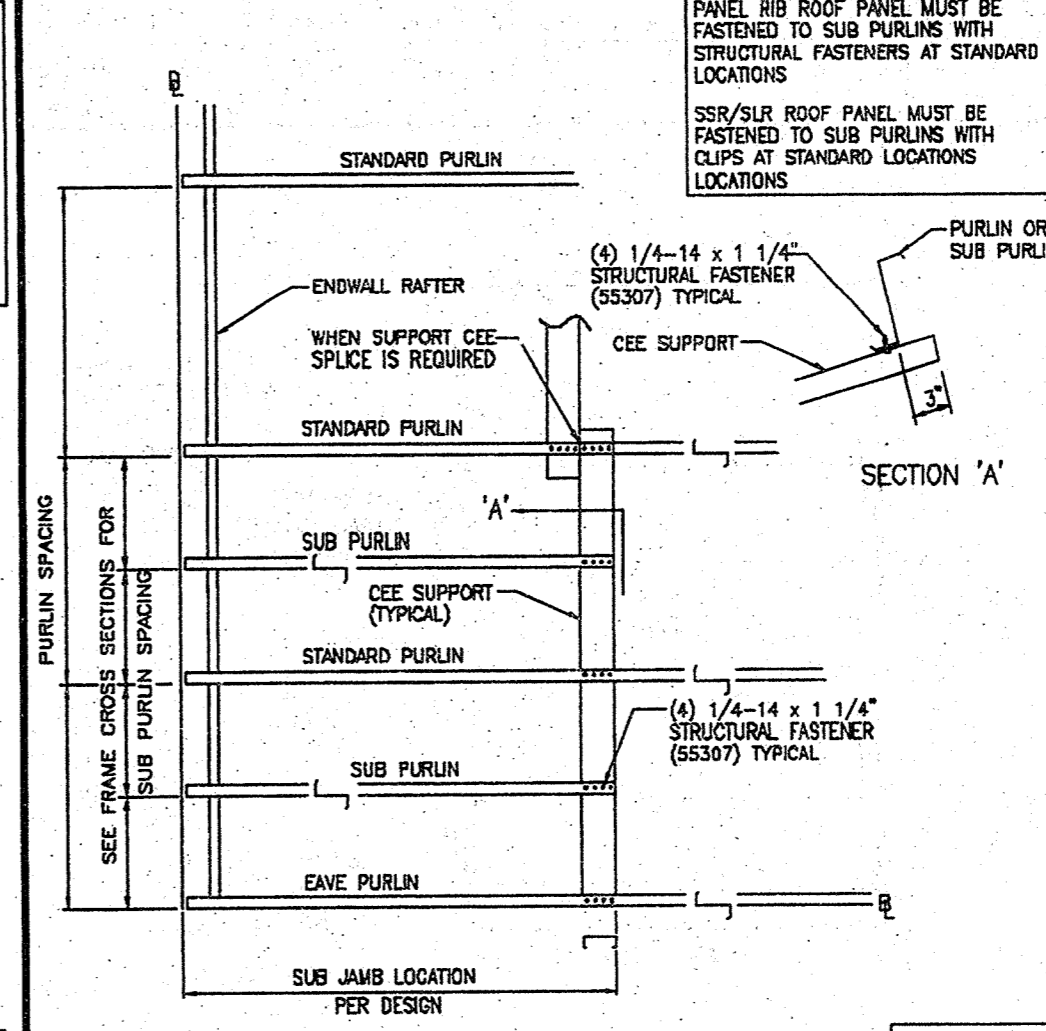
SLR PANEL LAYOUT **EN01A4**

SHEETING DIRECTION AND PANEL SEQUENCE **EN01A4**

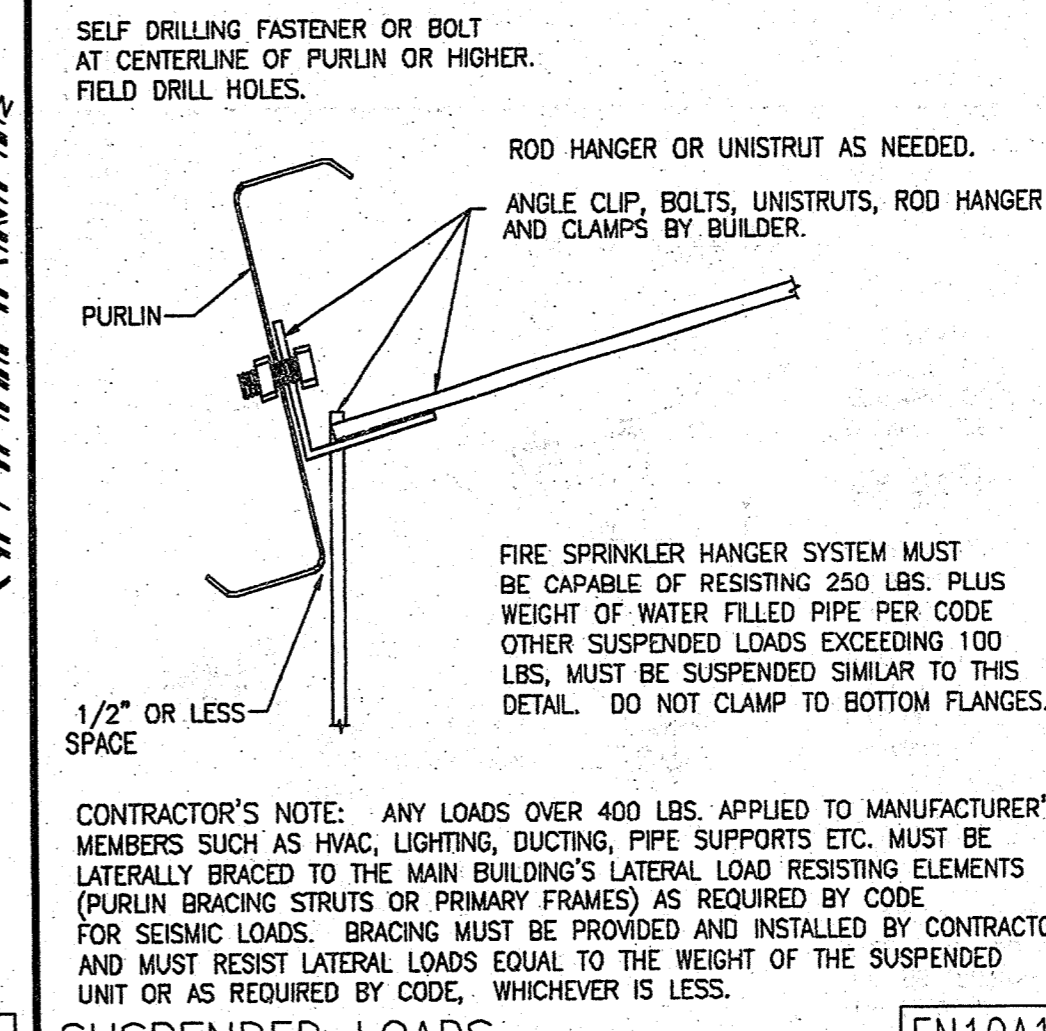


SECONDARY PUNCH PATTERNS **EN51A1**

COMMON GENERATED MARK NUMBERS **EN51A2**

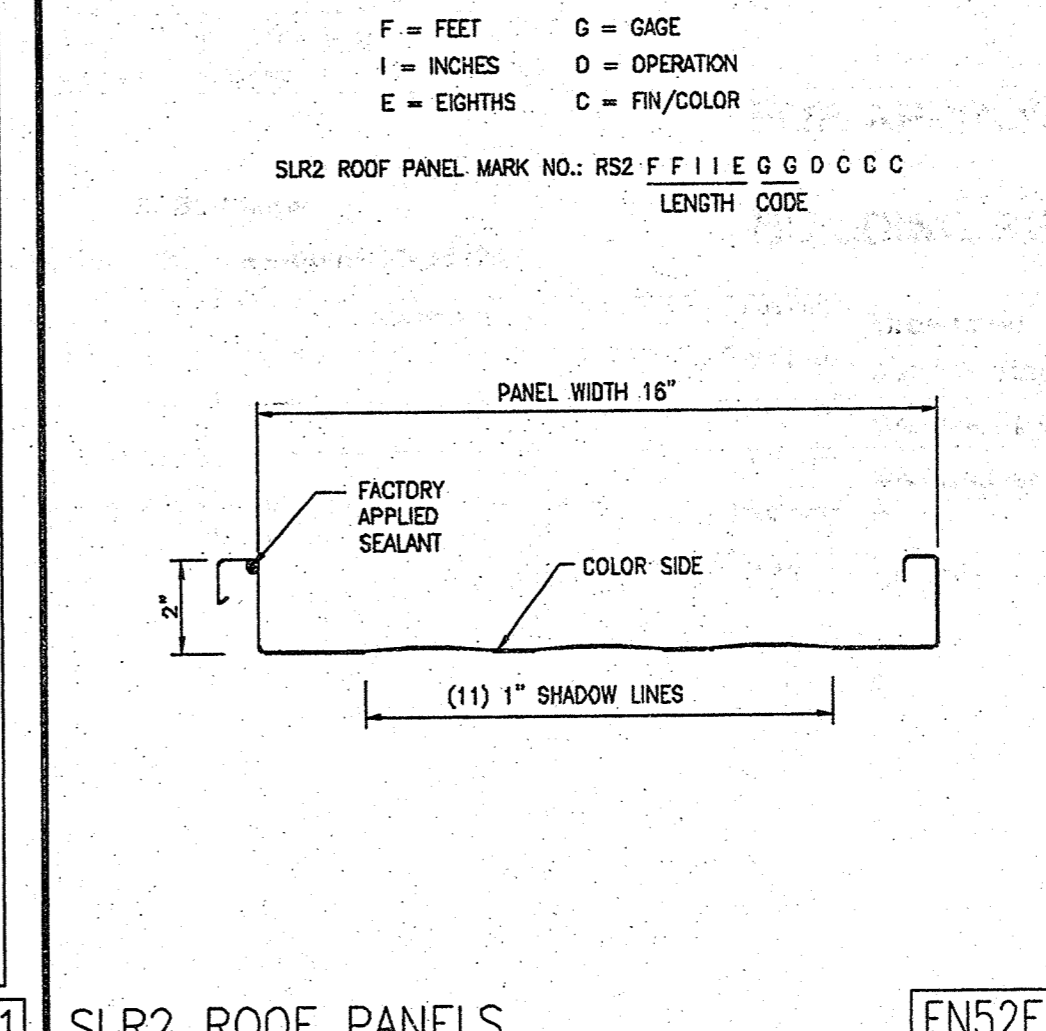


CORNER ZONE BRACING **BR09HF**



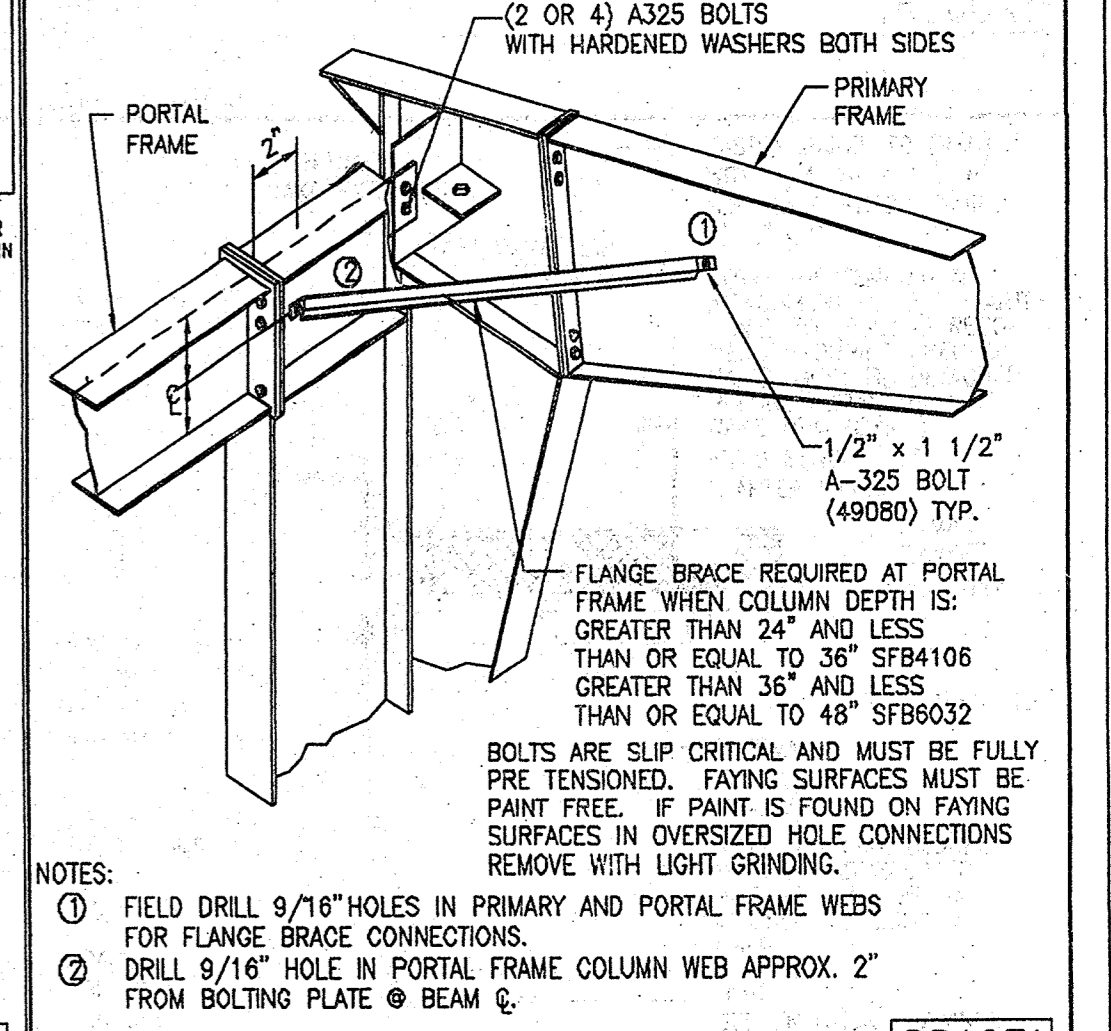
SUSPENDED LOADS **EN10A1**

FROM PURLINS - 100 LB. LOADS OR GREATER **EN10A2**

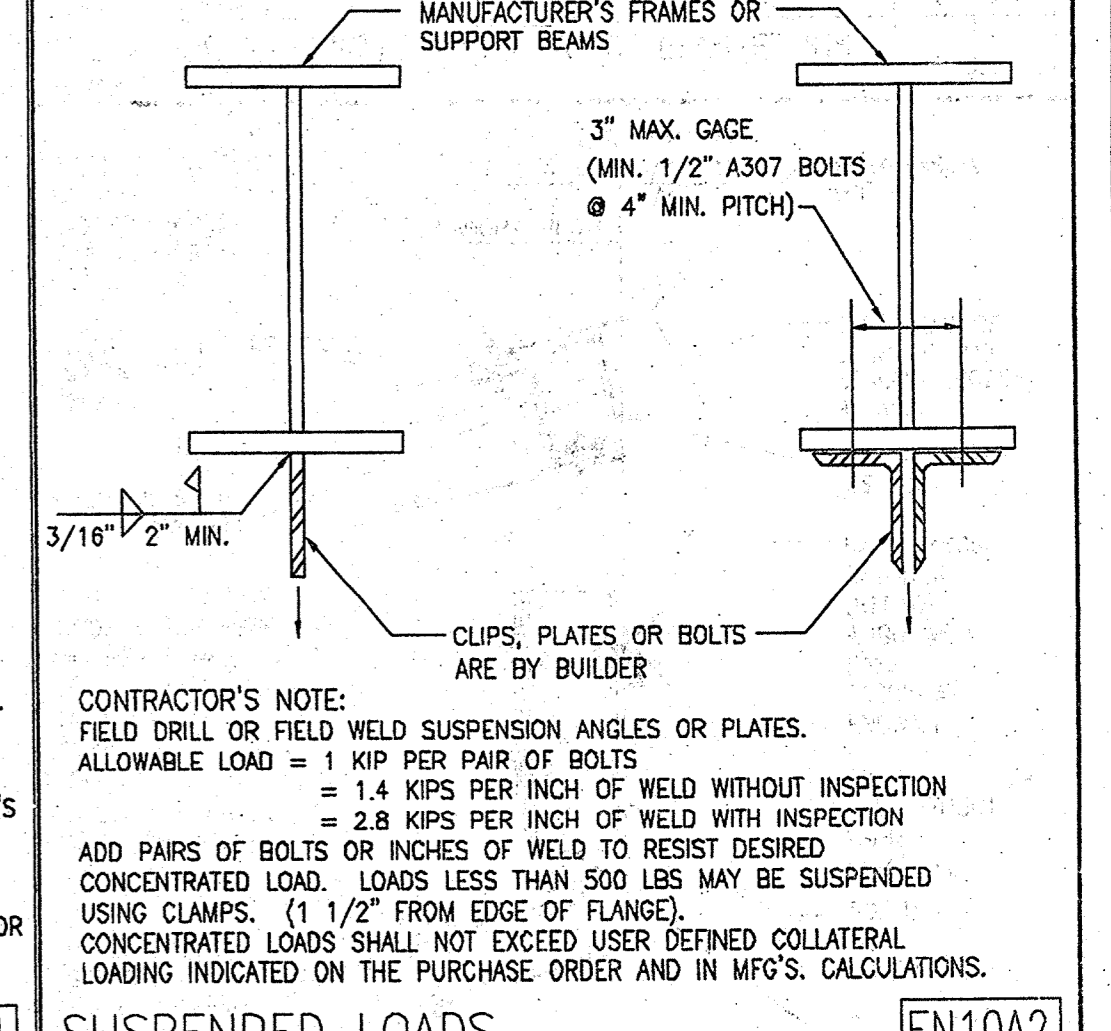


SLR2 ROOF PANELS **EN52E1**

**EN52H1**

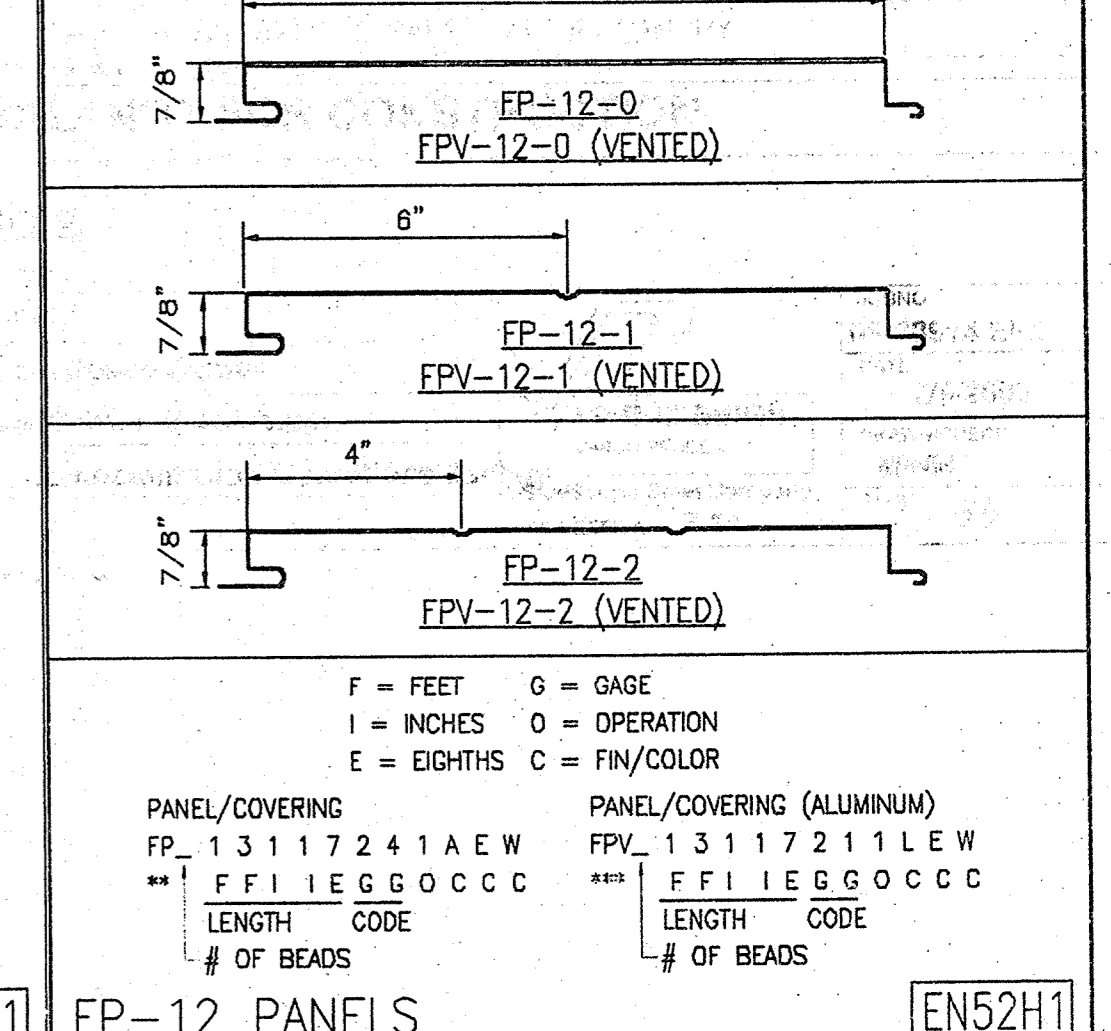


PORTAL FRAME DETAIL **BR12F1**



SUSPENDED LOADS **EN10A2**

FROM STRUCTURAL BEAMS **EN10A2**



FP-12 PANELS **EN52H1**

**EN52H1**

FOR APPROVAL - NOT FOR CONSTRUCTION

THE VP ENGINEER'S SEAL APPLIES ONLY TO THE WORK PRODUCT OF VP AND DESIGN AND PERFORMANCE REQUIREMENTS SPECIFIED BY VP. THE VP ENGINEER'S SEAL DOES NOT APPLY TO THE PERFORMANCE OR DESIGN OF ANY OTHER PRODUCT OR COMPONENT PUBLISHED BY VP EXCEPT TO ANY DESIGN OR PERFORMANCE REQUIREMENTS SPECIFIED BY VP.

THIS DRAWING, INCLUDING THE INFORMATION HEREON, REMAINS THE PROPERTY OF VP BUILDINGS. IT IS PROVIDED SOLELY FOR ERRECTING THE BUILDING DESCRIBED IN THE APPLICABLE PURCHASE ORDER AND SHALL NOT BE MODIFIED, REPRODUCED OR USED FOR ANY OTHER PURPOSE WITHOUT PRIOR WRITTEN APPROVAL OF VP BUILDINGS.

THE GENERAL CONTRACTOR AND/OR ERECTOR IS SOLELY RESPONSIBLE FOR ACCURATE, GOOD QUALITY WORKMANSHIP IN ERRECTING THIS BUILDING IN CONFORMANCE WITH THIS DRAWING, DETAILS REFERENCED IN THIS DRAWING, ALL APPLICABLE VP ERECTION GUIDES, AND INDUSTRY STANDARDS PERTAINING TO PROPER ERECTION, INCLUDING THE CORRECT USE OF TEMPORARY BRACINGS.

VP Buildings			
3200 Players Club Circle Memphis TN 38125			
REV	DATE	BY	DESCRIPTION

BUILDING SED'S		VP BUILDINGS	
BUILDER	Broadmoor, LLC	VP BUILDINGS	VP BUILDINGS
CUSTOMER	John F. Stennis Space Center	VP BUILDINGS	VP BUILDINGS
LOCATION	Stennis Space Center, Mississippi	VP BUILDINGS	VP BUILDINGS
PROJECT	Riverine and Combatant Craft Operations Facility	VP BUILDINGS	VP BUILDINGS
BUILDERS PO#		VP BUILDINGS	VP BUILDINGS
JOBNO	08-28914 EP2	VP BUILDINGS	VP BUILDINGS
DATE	2/9/2009	VP BUILDINGS	VP BUILDINGS
DRAWN/CHECK	MWM	VP BUILDINGS	VP BUILDINGS
PAGE	32	VP BUILDINGS	VP BUILDINGS