

Frame Member Schedule							
Part	Mem	Width	Thick	WebThk.	Depth1	Depth2	Approx.Lgth
CX214	1	10"	.5000	.1875	1'-6"	1'-5 7/8"	21'-5 3/16"
	2	10"	.5000	.2500	1'-5 7/8"	1'-6"	
RBX218	3	8"	.5000	.1875	1'-8"	1'-8"	25'-8"
	4	8"	.5000	.1875	1'-8"	1'-8"	
CX215	5	10"	.5000	.2500	1'-5 7/8"	1'-6"	21'-5 3/16"
	6	10"	.5000	.1875	1'-6"	1'-5 7/8"	

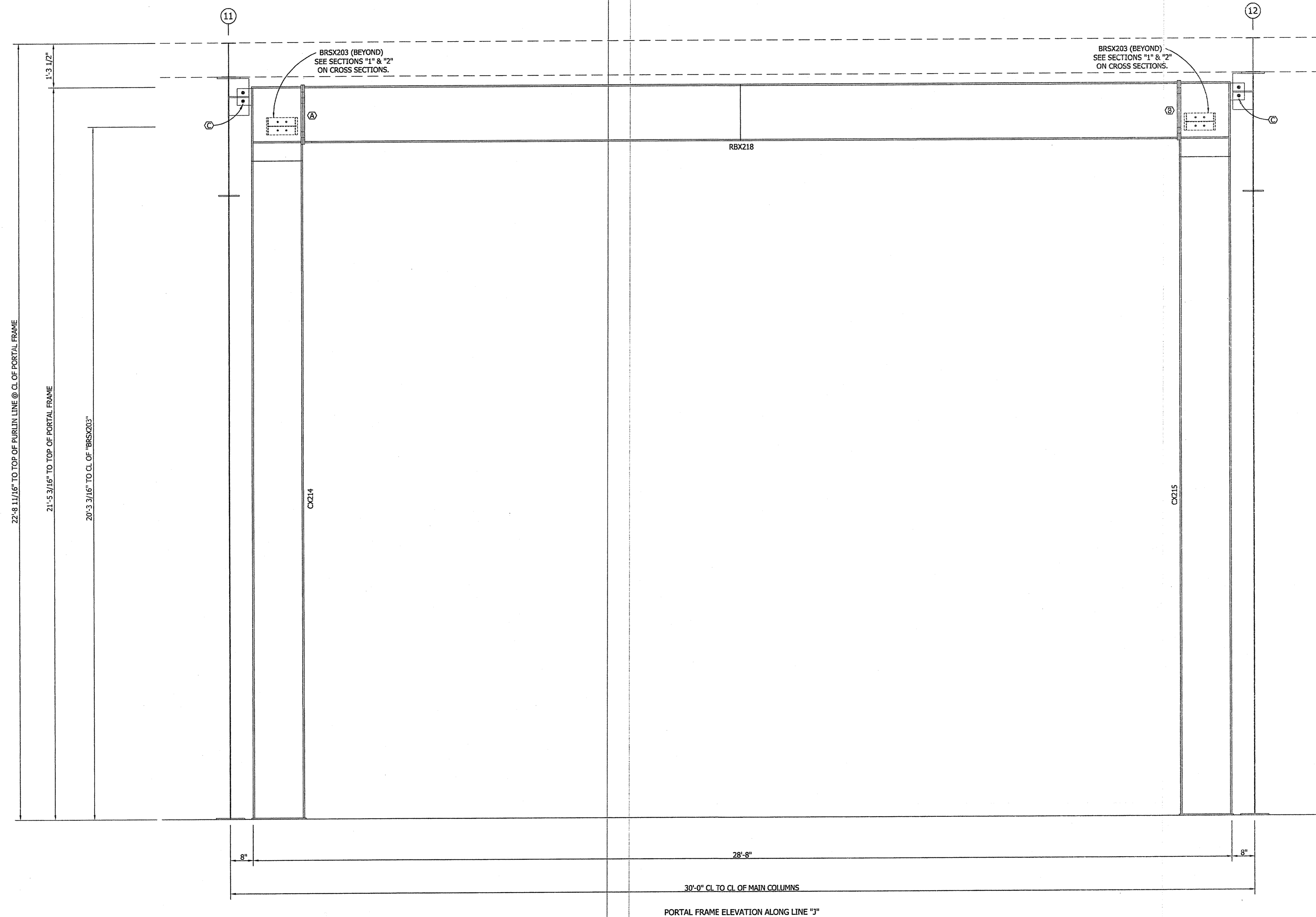
○ Bolt Connection & Plate Schedule

Id	Qty	ASTM	Bolt Dia.	Bolt Length	Plate Thick.	Rows Out	Rows In	Washer
A	10	A325	3/4"	2 1/4"	5/8"	3	2	NA
B	8	A325	3/4"	2 1/4"	5/8"	2	2	NA
C	2	A325	3/4"	2 1/4"	3/8"	1	1	YES - "BOTH SIDES OF CONNECTION"

NOTE: BOLTS ARE SLIP CRITICAL AND MUST BE FULLY PRE-TENSIONED. FAYING SURFACES MUST BE PAINT FREE. IF PAINT IS FOUND ON FAYING SURFACES, IT MUST BE REMOVED WITH LIGHT GRINDING!

Frame Clearances

- Horiz. Clearance between members 1(CX214) and 5(CX215): 25'-8 1/8"
- Horiz. Clearance between members 1(CX214) and 6(CX215): 25'-8 1/4"
- Horiz. Clearance between members 2(CX214) and 5(CX215): 25'-8"
- Horiz. Clearance between members 2(CX214) and 6(CX215): 25'-8 1/8"
- Vert. Clearance at member 2(CX214): 19'-8 11/16"
- Vert. Clearance at member 5(CX215): 19'-8 11/16"
- Finished Floor Elevation = 100'-0" (Unless Noted Otherwise)



- USE 1/2 X 1 1/2 A325 SNUG TIGHTENED BOLTS FOR PURLIN LINE @ CL OF PORTAL FRAME, GIRT TO FRAME, AND GIRT TO CLIP CONNECTIONS UNLESS NOTED OTHERWISE.
- SLOT REINFORCEMENT PLATES NEED NOT BE LOCATED ON THE SAME SIDE OF THE WEB AS THE HILLSIDE WASHER.

THE VP ENGINEER'S SEAL APPLIES ONLY TO THE WORK PRODUCT OF VP AND DESIGN AND PERFORMANCE REQUIREMENTS SPECIFIED BY VP. THE VP ENGINEER'S SEAL DOES NOT APPLY TO THE PERFORMANCE OR DESIGN OF ANY OTHER PRODUCT OR COMPONENT FURNISHED BY VP EXCEPT TO ANY DESIGN OR PERFORMANCE REQUIREMENTS SPECIFIED BY VP.

Shape Name = Maintenance Area Wall 4, Frame 3

THIS DRAWING, INCLUDING THE INFORMATION HEREON, REMAINS THE PROPERTY OF VP BUILDINGS. IT IS PROVIDED SOLELY FOR ERECTING THE BUILDING DESCRIBED IN THE APPLICABLE PURCHASE ORDER AND SHALL NOT BE MODIFIED, REPRODUCED OR USED FOR ANY OTHER PURPOSE WITHOUT PRIOR WRITTEN APPROVAL OF VP BUILDINGS.

THE GENERAL CONTRACTOR AND/OR ERECTOR IS SOLELY RESPONSIBLE FOR ACCURATE, GOOD QUALITY WORKMANSHIP IN ERECTING THIS BUILDING IN CONFORMANCE WITH THIS DRAWING, DETAILS REFERENCED IN THIS DRAWING, ALL APPLICABLE VP ERECTION GUIDES, AND INDUSTRY STANDARDS PERTAINING TO PROPER ERECTION, INCLUDING THE CORRECT USE OF TEMPORARY

VP Buildings			
3200 Players Club Circle Memphis TN 38125			
REV	DATE	BY	DESCRIPTION

PORTAL FRAME ELEVATION ALONG LINE "J"

BUILDER:	Broadmoor, LLC
CUSTOMER:	John F. Stennis Space Center
LOCATION:	Stennis Space Center, Mississippi
PROJECT:	Riverine and Combatant Craft Operations Facility (Maintenance Building)

FOR CONSTRUCTION

VP BUILDINGS
VARCO PRUDEN
A BlueScope Steel Company
VP ERECTION: 7.1e

JOBNO: 09-28914-EP2
DATE: 4/21/09
DRAWN/CHECK: ODW/ODN
PAGE: 12 OF 22

