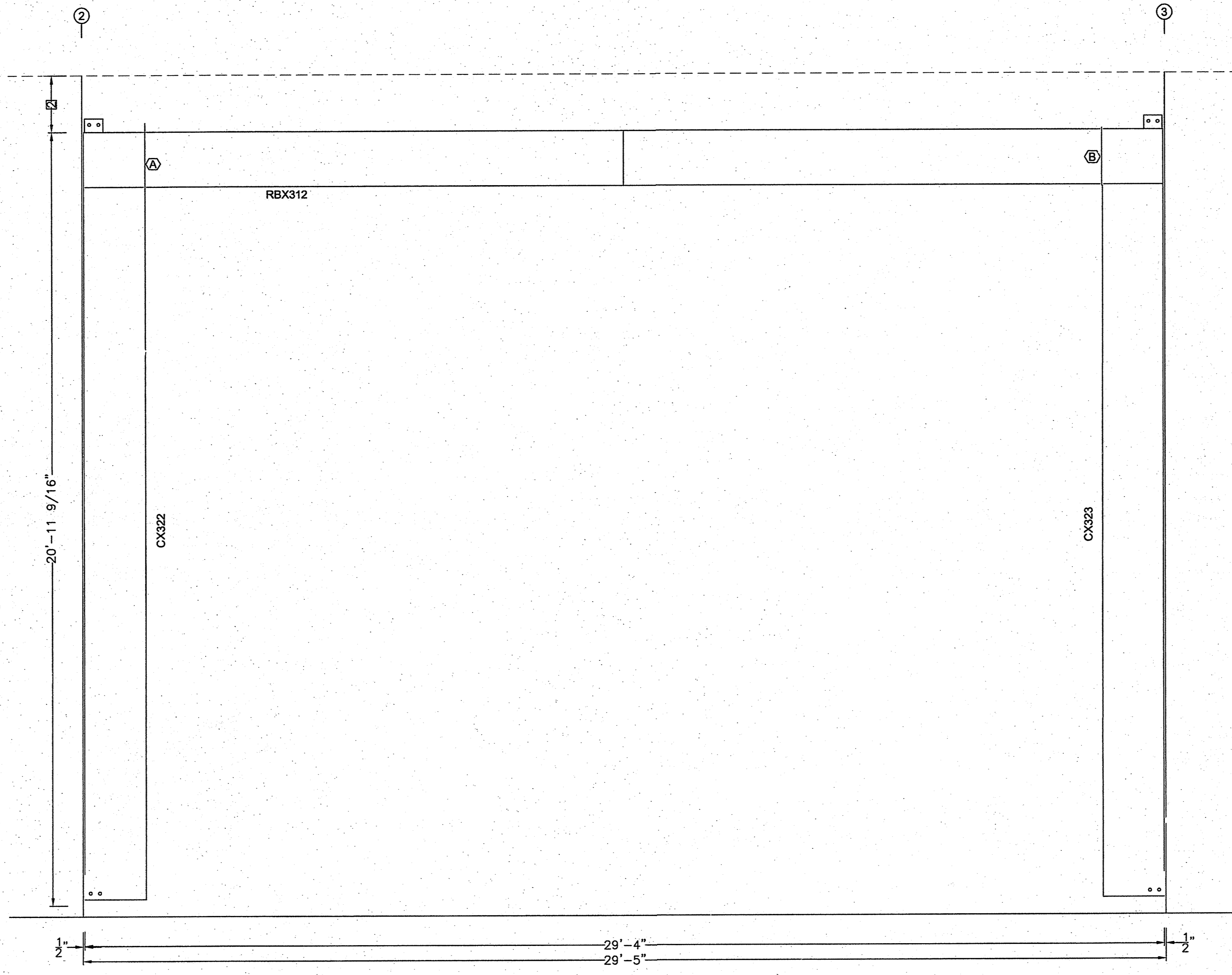


Frame Member Schedule							
Part	Mem	Width	Thick	WebThk.	Depth1	Depth2	Approx.Lgth
CX322	1	1'-0"	.3750	.1345	1'-8"	1'-8"	20'-9 9/16"
RBX312	2	1'-0"	.3750	.1345	1'-6"	1'-6"	26'-0"
	3	1'-0"	.3750	.1345	1'-6"	1'-6"	
CX323	4	8"	.2500	.1345	1'-8"	1'-8"	20'-9 9/16"

Bolt Connection & Plate Schedule									
Id	Qty	ASTM	Bolt Dia.	Bolt Length	Plate Thick.	Rows Out	Rows In	Tension Bolt	Washer
A	22	A325	3/4"	2"	3/8"	3	4		
B	10	A325	3/4"	2"	1/2"	3	2		

Frame Clearances
 Horiz. Clearance between members 1(CX322) and 4(CX323): 26'-0"
 Vert. Clearance at member 1(CX322): 19'-6 3/16"
 Vert. Clearance at member 4(CX323): 19'-8 9/16"
 Finished Floor Elevation = 100'-0" (Unless Noted Otherwise)



PORTAL FRAME ELEVATION ALONG D

- 2 1'-6 1/4"
- 1 1/2"

Dimension Key

1. USE 1/2 X 1 1/2 A325 SNUG TIGHTENED BOLTS FOR PURLIN TO FRAME, GIRT TO FRAME, AND GIRT TO CLIP CONNECTIONS UNLESS NOTED OTHERWISE.
2. SLOT REINFORCEMENT PLATES NEED NOT BE LOCATED ON THE SAME SIDE OF THE WEB AS THE HILLSIDE WASHER.


THE VP ENGINEER'S SEAL APPLIES ONLY TO THE WORK PRODUCT OF VP AND DESIGN AND PERFORMANCE REQUIREMENTS SPECIFIED BY VP. THE VP ENGINEER'S SEAL DOES NOT APPLY TO THE PERFORMANCE OR DESIGN OF ANY OTHER PRODUCT OR COMPONENT FURNISHED BY VP EXCEPT TO ANY DESIGN OR PERFORMANCE REQUIREMENTS SPECIFIED BY VP.

THIS DRAWING, INCLUDING THE INFORMATION HEREON, REMAINS THE PROPERTY OF VP BUILDINGS. IT IS PROVIDED SOLELY FOR ERECTING THE BUILDING DESCRIBED IN THE APPLICABLE PURCHASE ORDER AND SHALL NOT BE MODIFIED, REPRODUCED OR USED FOR ANY OTHER PURPOSE WITHOUT PRIOR WRITTEN APPROVAL OF VP BUILDINGS.

THE GENERAL CONTRACTOR AND/OR ERECTOR IS SOLELY RESPONSIBLE FOR ACCURATE, GOOD QUALITY WORKMANSHIP IN ERECTING THIS BUILDING IN CONFORMANCE WITH THIS DRAWING, DETAILS REFERENCED IN THIS DRAWING, AND INDUSTRY STANDARDS PERTAINING TO PROPER ERECTION, INCLUDING THE CORRECT USE OF TEMPORARY BRACING.

Shape Name = Boat Storage Building Wall 4, Frame 1

FOR APPROVAL - NOT FOR CONSTRUCTION

VP Buildings, Inc. 3200 Players Club Circle Memphis TN 38125			PORTAL FRAME ELEVATION ALONG D	
REV	DATE	BY	DESCRIPTION	BUILDER Broadmoor, LLC
				CUSTOMER John F. Stennis Space Center
				LOCATION Stennis Space Center, Mississippi
				PROJECT Riverine and Combatant Craft Operations
				BUILDERS PO#
			NTS	
			 VPC VERSION: 7.1c	
			JOBNO 08-28914 DATE 02/03/2009 DRAWN/CHECK RAI PAGE 16	