

○ Part Mark Key

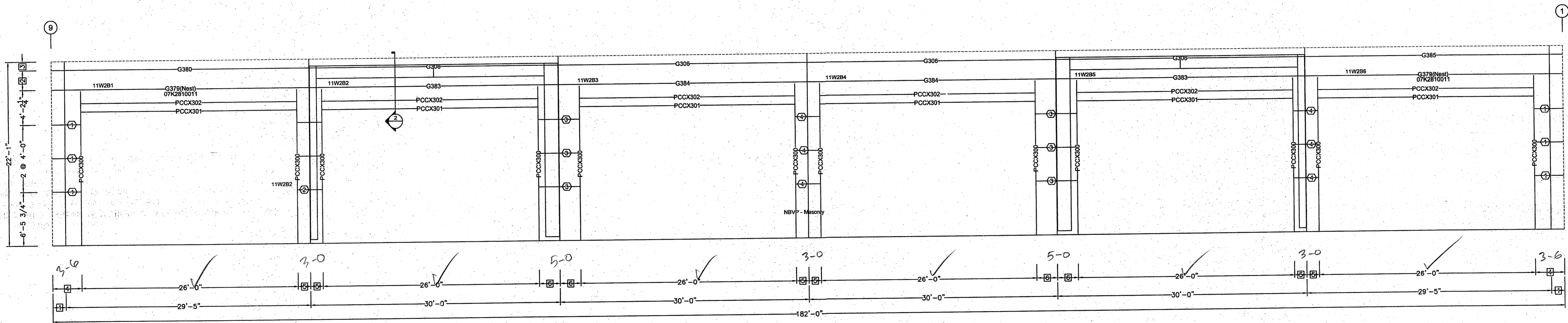
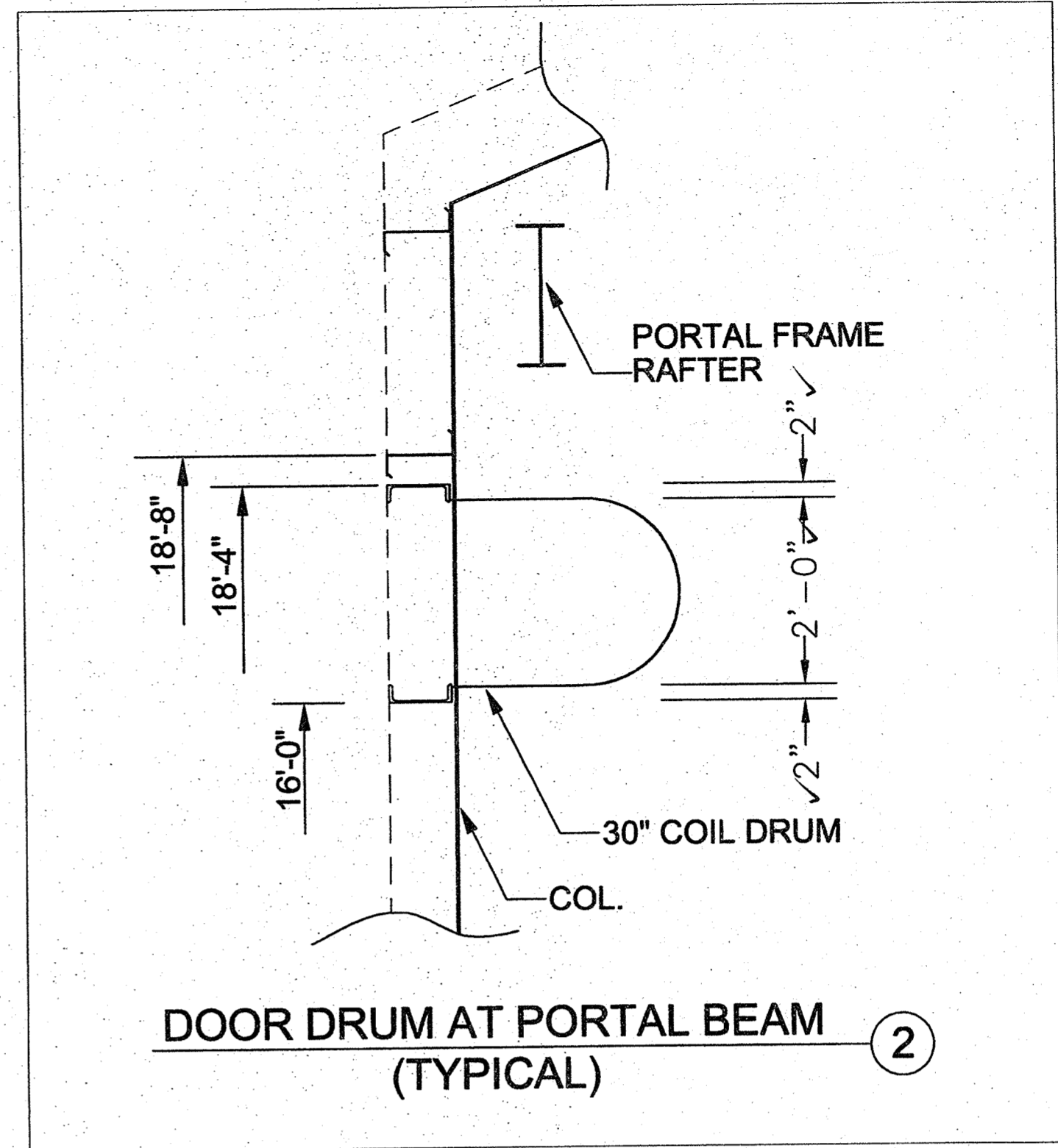
- 1 G378
- 2 G381(Typ.)
- 3 G382
- 4 G381

Secondary Part Schedule

Mark	Part	Thick.	Depth	Lap
	07K2810011	0.1200	8 1/2"	
	PCCX300	0.2000	6"	
	PCCX301	0.5100	1'-0"	
	PCCX302	0.2200	8"	
G306	40G3202417	0.0590	8 1/2"	1'-0"
G378	001G0305417	0.0590	8 1/2"	
G379	000G31010##	0.1200	8 1/2"	
G380	002G3201017	0.0590	8 1/2"	1'-0"
G381	003G0211417	0.0590	8 1/2"	
G382	004G0411417	0.0590	8 1/2"	
G383	46G38024##	0.1200	8 1/2"	4'-0"
G384	46G3802412	0.1050	8 1/2"	4'-0"
G385	005G3201017	0.0590	8 1/2"	1'-0"

○ Frame Member Schedule

Part	Width	Thick.	Webthk	Depth	Approx. Lgth
PCCX300	MC 8 x 21.4			8"	18'-5 3/4"
PCCX301	CH 8 x 11.50			8"	26'-0"
PCCX302	CH 8 x 11.50			8"	26'-0"



SECONDARY ELEVATION AT A

- 6 2'-6"
- 5 1'-6"
- 4 3'-6"
- 3 1'-0 11/16"
- 2 2'-4 5/16"
- 1 1'-7"

□ Dimension Key

1. UNLESS NOTED, USE 1/2 X 1 1/2 A-325 SNUG TIGHTENED BOLTS FOR GIRT LAP, GIRT TO FRAME, FLANGE BRACE TO FRAME, FLANGE BRACE TO GIRT, JAMB AND HEADER CONNECTIONS.
2. WIND AND FLANGE BRACING ARE AN INTEGRAL PART OF THE WALL STRUCTURAL SYSTEM AND SHOULD BE PROPERLY INSTALLED PRIOR TO ERECTION OF WALL AND ROOF SHEETS. REMOVAL OR ALTERATION OF WALL BRACING WITHOUT PRIOR AUTHORIZATION IS PROHIBITED.

THE VP ENGINEER'S SEAL APPLIES ONLY TO THE WORK PRODUCT OF VP AND DESIGN AND PERFORMANCE REQUIREMENTS SPECIFIED BY VP. THE VP ENGINEER'S SEAL DOES NOT APPLY TO THE PERFORMANCE OR DESIGN OF ANY OTHER PRODUCT OR COMPONENT FURNISHED BY VP EXCEPT TO ANY DESIGN OR PERFORMANCE REQUIREMENTS SPECIFIED BY VP.

THIS DRAWING, INCLUDING THE INFORMATION HEREON, REMAINS THE PROPERTY OF VP BUILDINGS. IT IS PROVIDED SOLELY FOR ERECTING THE BUILDING DESCRIBED IN THE APPLICABLE PURCHASE ORDER AND SHALL NOT BE MODIFIED, REPRODUCED OR USED FOR ANY OTHER PURPOSE WITHOUT PRIOR WRITTEN APPROVAL OF VP BUILDINGS.

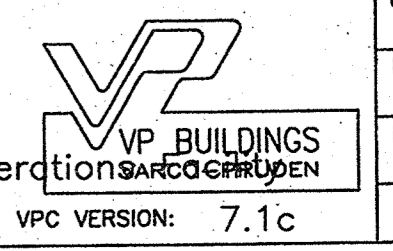
THE GENERAL CONTRACTOR AND/OR ERECTOR IS SOLELY RESPONSIBLE FOR ACCURATE, GOOD QUALITY WORKMANSHIP IN ERECTING THIS BUILDING IN CONFORMANCE WITH THIS DRAWING, DETAILS REFERENCED IN THIS DRAWING, ALL APPLICABLE VP ERECTION GUIDES, AND INDUSTRY STANDARDS PERTAINING TO PROPER ERECTION, INCLUDING THE CORRECT USE OF TEMPORARY BRACING.

REV	DATE	BY	DESCRIPTION

FOR APPROVAL— NOT FOR CONSTRUCTION

SECONDARY ELEVATION AT A

BUILDER	Broadmoor, LLC
CUSTOMER	John F. Stennis Space Center
LOCATION	Stennis Space Center, Mississippi
PROJECT	Riverine and Combatant Craft Operations
BUILDERS PO#	



JOBNO	08-28914
DATE	2/3/2009
DRAWN/CHECK	RAT
PAGE	13

Shape Name = Boat Storage Building, Wall = 2