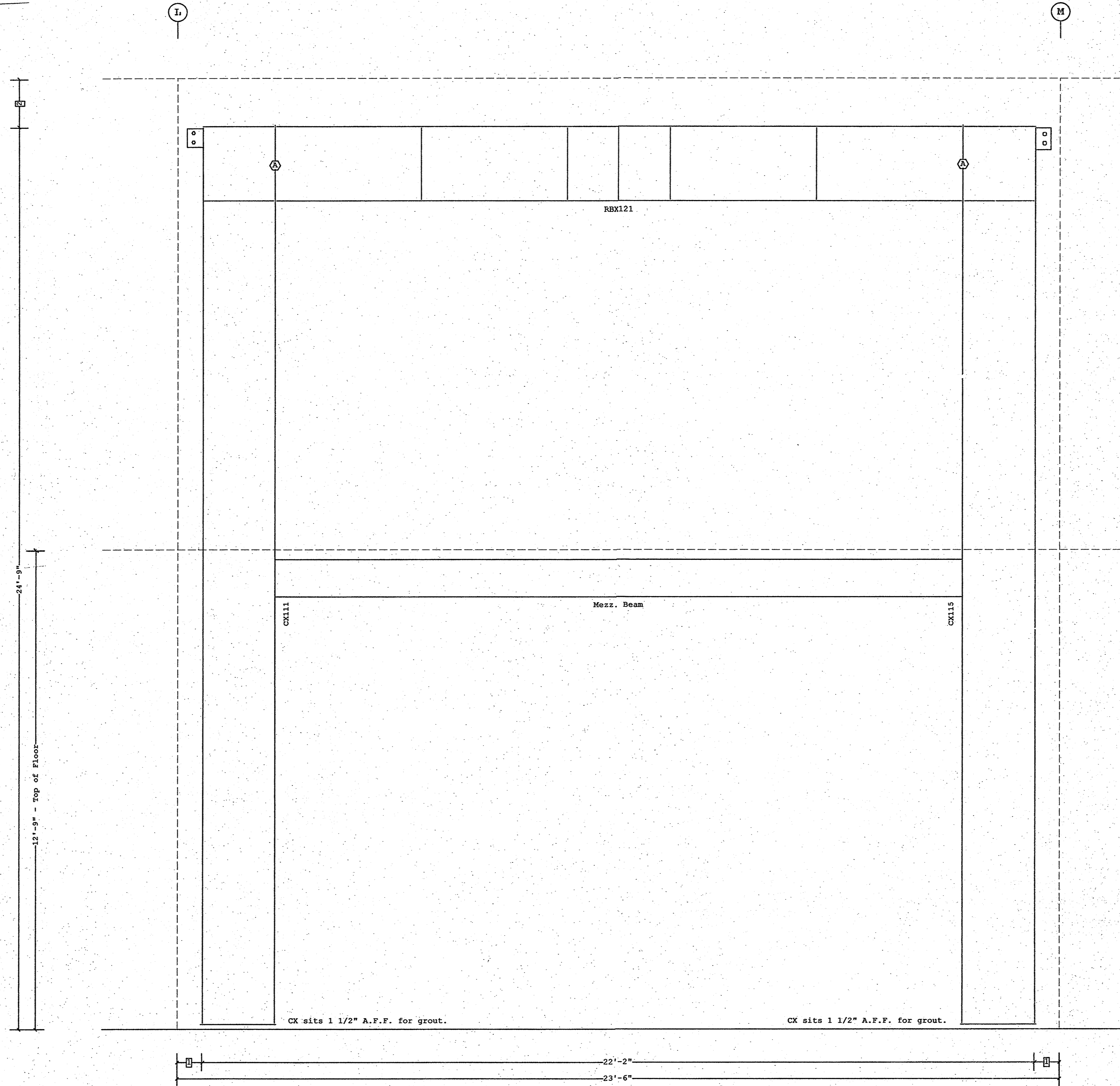


Part	Mem	Width	Thick	WebThk.	Depth1	Depth2	Approx. Lgth
CX115	1	10"	.3125	.1345	2'-0"	2'-0"	23'-10 5/16"
RBX121	2	10"	.3125	.1345	2'-0"	2'-0"	18'-2"
CX111	4	10"	.3125	.1345	2'-0"	2'-0"	23'-10 5/16"

Bolt Connection & Plate Schedule						
Id	Qty	ASTM	Bolt Dia.	Bolt Length	Plate Thick.	Rows Out In
A	4	A325	3/4"	2"	3/8"	1 1

Frame Clearances  
 Horiz. Clearance between members 1(CX115) and 4(CX111): 18'-2"  
 Vert. Clearance at member 1(CX115): 22'-9"  
 Vert. Clearance at member 4(CX111): 22'-9"  
 Finished Floor Elevation = 100'-0" (Unless Noted Otherwise)



PORTAL FRAME ELEVATION ALONG 1

- 2 6 5/16"
- 1 8"

Dimension Key

Shape Name = Operations Building Wall 2, Frame 4

- USE 1/2 X 1 1/2 A325 SNUG TIGHTENED BOLTS FOR PURLIN TO FRAME, GIRT TO FRAME, AND GIRT TO CLIP CONNECTIONS UNLESS NOTED OTHERWISE.
- SLOT REINFORCEMENT PLATES NEED NOT BE LOCATED ON THE SAME SIDE OF THE WEB AS THE HILLSIDE WASHER.

THE VP ENGINEER'S SEAL APPLIES ONLY TO THE WORK PRODUCT OF VP AND DESIGN AND PERFORMANCE REQUIREMENTS SPECIFIED BY VP. THE VP ENGINEER'S SEAL DOES NOT APPLY TO THE PERFORMANCE OR DESIGN OF ANY OTHER PRODUCT OR COMPONENT FURNISHED BY VP EXCEPT TO ANY DESIGN OR PERFORMANCE REQUIREMENTS SPECIFIED BY VP.

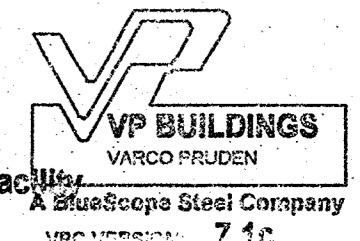
THIS DRAWING, INCLUDING THE INFORMATION HEREON, REMAINS THE PROPERTY OF VP BUILDINGS. IT IS PROVIDED SOLELY FOR ERECTING THE BUILDING DESCRIBED IN THE APPLICABLE PURCHASE ORDER AND SHALL NOT BE MODIFIED, REPRODUCED OR USED FOR ANY OTHER PURPOSE WITHOUT PRIOR WRITTEN APPROVAL OF VP BUILDINGS.

THE GENERAL CONTRACTOR AND/OR ERECTOR IS SOLELY RESPONSIBLE FOR ACCURATE, GOOD QUALITY WORKMANSHIP IN ERECTING THIS BUILDING IN CONFORMANCE WITH THIS DRAWING, DETAILS REFERENCED IN THIS DRAWING, ALL APPLICABLE VP ERECTION GUIDES, AND INDUSTRY STANDARDS PERTAINING TO PROPER ERECTION, INCLUDING THE CORRECT USE OF TEMPORARY BRACING.

VP Buildings			
3200 Players Club Circle Memphis TN 38125			
REV	DATE	BY	DESCRIPTION

PORTAL FRAME ELEVATION ALONG 1

BUILDER	Broadmoor, LLC
CUSTOMER	John F. Stennis Space Center
LOCATION	Stennis Space Center, Mississippi
PROJECT	Riverine and Combatant Craft Operations Facility
BUILDERS PO#	



JOBN0	08-28914
DATE	2/12/2009
DRAWN/CHECK	MWW
PAGE	12