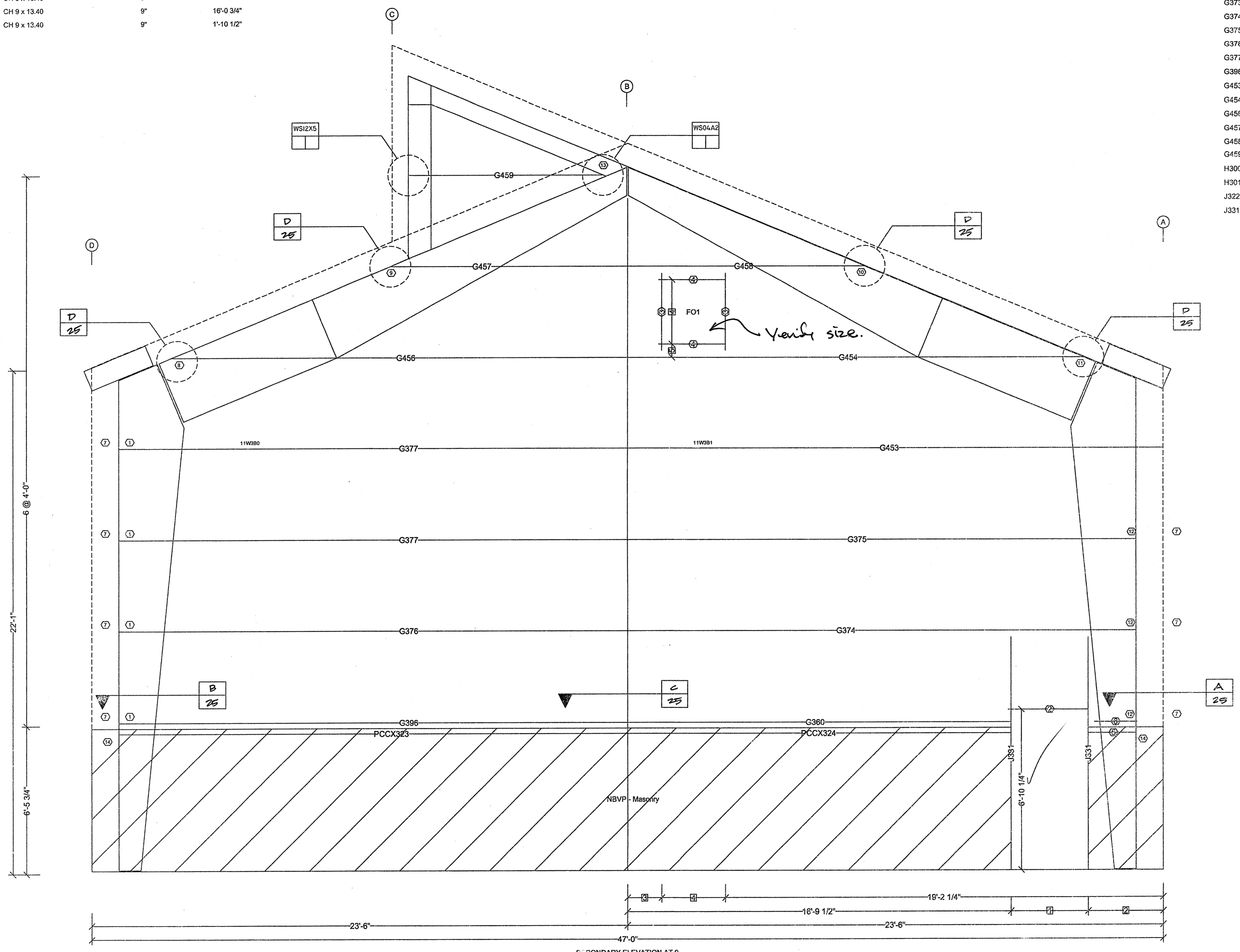


- Part Mark Key
- 1 GCC072084
- 2 H300
- 3 J322
- 4 H301
- 5 PCCX325
- 6 G373
- 7 GFA200
- 8 01H080602208113
- 9 01H070102302113
- 10 01H060102206113
- 11 01H080402208113
- 12 GCC102072
- 13 GFA300
- 14 2XP08402082

Frame Member Schedule					
Part	Width	Thick.	Webthk	Depth1	Approx. Lgth
PCCX323	CH 9 x 13.40			9"	21'-10 1/4"
PCCX324	CH 9 x 13.40			9"	16'-0 3/4"
PCCX325	CH 9 x 13.40			9"	1'-10 1/2"

Framed Opening Locations						
Id	Width	Height	Sill Ht.	Frame	To	Dimen.
FO1	2'-9 3/4"	2'-9 3/4"	23'-0 7/8"	1	Jamb-L	1'-6"

Secondary Part Schedule				
Mark	Part	Thick.	Depth	Lap
G360	40G1707417	0.0590	8 1/2"	1'-0"
G373	01G0110417	0.0590	8 1/2"	
G374	44G2505014	0.0920	8 1/2"	3'-0"
G375	42G2405016	0.0650	8 1/2"	2'-0"
G376	44G2505015	0.0730	8 1/2"	3'-0"
G377	44G2505016	0.0650	8 1/2"	3'-0"
G396	44G2505017	0.0590	8 1/2"	3'-0"
G453	42G2501416	0.0650	8 1/2"	2'-0"
G454	44G2206317	0.0590	8 1/2"	3'-0"
G456	44G2206017	0.0590	8 1/2"	3'-0"
G457	40G1111617	0.0590	8 1/2"	1'-0"
G458	40G1104317	0.0590	8 1/2"	1'-0"
G459	01G0804717	0.0590	8 1/2"	
H300	DH0304417	0.0590	8 1/2"	
H301	DH0203617	0.0590	8 1/2"	
J322	002J0304417	0.0590	8 1/2"	
J331	004J1002017	0.0590	8 1/2"	



- 4 2'-9 3/4"
- 3 1'-6"
- 2 3'-4"
- 1 3'-4 1/2"

Dimension Key

1. UNLESS NOTED, USE 1/2 X 1 1/2 A-325 SMUG TIGHTENED BOLTS FOR GIRT LAP, GIRT TO FRAME, FLANGE BRACE TO FRAME, FLANGE BRACE TO GIRT, JAMB AND HEADER CONNECTIONS.
 2. WIND AND FLANGE BRACING ARE AN INTEGRAL PART OF THE WALL STRUCTURAL SYSTEM AND SHOULD BE PROPERLY INSTALLED PRIOR TO ERECTION OF WALL AND ROOF SHEETS. REMOVAL OR ALTERATION OF WALL BRACING WITHOUT PRIOR AUTHORIZATION IS PROHIBITED.

THE VP ENGINEER'S SEAL APPLIES ONLY TO THE WORK PRODUCT OF VP AND DESIGN AND PERFORMANCE REQUIREMENTS SPECIFIED BY VP. THE VP ENGINEER'S SEAL DOES NOT APPLY TO THE PERFORMANCE OR DESIGN OF ANY OTHER PRODUCT OR COMPONENT FURNISHED BY VP EXCEPT TO ANY DESIGN OR PERFORMANCE REQUIREMENTS SPECIFIED BY VP.

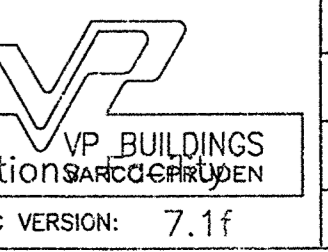
THIS DRAWING, INCLUDING THE INFORMATION HEREON, REMAINS THE PROPERTY OF VP BUILDINGS. IT IS PROVIDED SOLELY FOR ERECTING THE BUILDING DESCRIBED IN THE APPLICABLE PURCHASE ORDER AND SHALL NOT BE MODIFIED, REPRODUCED OR USED FOR ANY OTHER PURPOSE WITHOUT PRIOR WRITTEN APPROVAL OF VP BUILDINGS.
 THE GENERAL CONTRACTOR AND/OR ERECTOR IS SOLELY RESPONSIBLE FOR ACCURATE, GOOD QUALITY WORKMANSHIP IN ERECTING THIS BUILDING IN CONFORMANCE WITH THIS DRAWING DETAILS REFERENCED IN THIS DRAWING, ALL APPLICABLE VP ERECTION GUIDES, AND INDUSTRY STANDARDS PERTAINING TO PROPER ERECTION, INCLUDING THE CORRECT USE OF TEMPORARY BRACING.

VP Buildings, Inc.
 3200 Players Club Circle Memphis TN 38125

SECONDARY ELEVATION AT 9

REV	DATE	BY	DESCRIPTION

BUILDER	Broadmoor, LLC
CUSTOMER	John F. Stennis Space Center
LOCATION	Stennis Space Center, Mississippi
PROJECT	Riverine and Combatant Craft Operations
BUILDERS PO#	



JOBNO	08-28914EP3
DATE	4/30/09
DRAWN/CHECK	BR
PAGE	20

Shape Name = Boat Storage Building, Wall = 3

FOR CONSTRUCTION

