

Id	Qty	Type	Length	Gage	OP	Fin.	Color	Direction
#26	59	FP12	TBD	22	1	A	TBD	Left to Right
#27	4	FP12	TBD	22	1	A	TBD	Left to Right
#28	13	FP12	TBD	22	1	A	TBD	Left to Right
#29	13	FP12	TBD	22	1	A	TBD	Left to Right
#30	10	FP12	TBD	22	1	A	TBD	Left to Right
#48	7	FP12	TBD	22	1	A	TBD	Left to Right

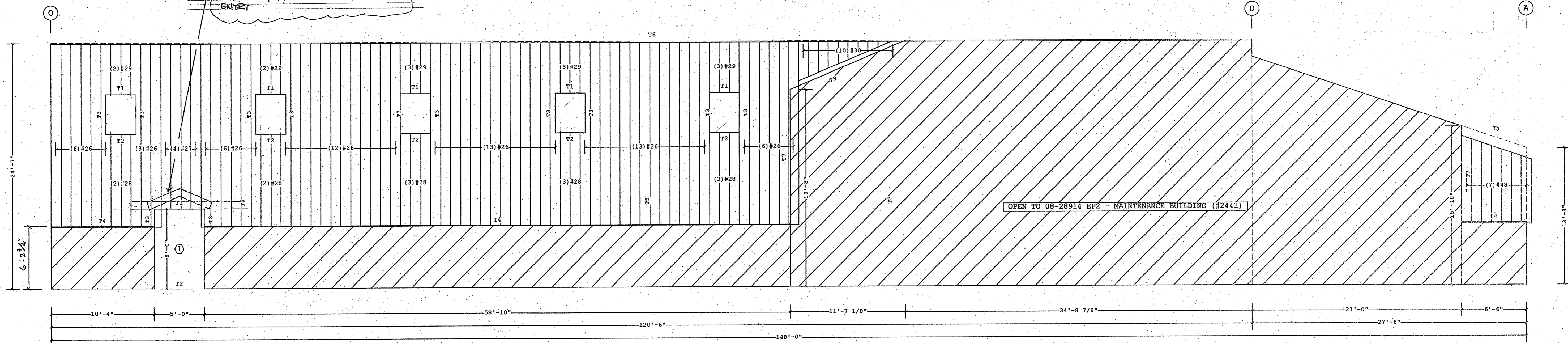
Oper. Code:1=SQ,SQ
 Finish:A=AEP
 Color:TBD=To Be Determined
 NOTE: Panels to be FIELD SLOPE CUT

Trim Schedule	Color	Details
T1 HEADER TRIM	TBD	WC24A2 (Similar)
T2 SILL TRIM	TBD	See pg.
T3 JAMB TRIM	TBD	WC24A1 (Similar)
T4 BOTTOM OF PANEL FLASHING	TBD	
T5 DOWNSPOUT	TBD	RC38F1
T6 TOP OF PANEL & CANOPY	TBD	WC11A1 (Similar), WC11A4 (Similar)
T7 INSIDE CORNER	TBD	See pg.
T8 PURLIN CLOSURES & TRIM	TBD	RC80A2, RC80A3, RC80C1, RC80C4, RC80D4, WC12A1 (Similar)
T9 SLR ROOF HEIGHT CHANGE	TBD	RC52E1, WC15A4, WC52A1 - ALL SIMILAR

PLEASE VERIFY
 1. Panel color
 2. Trim color

① Part Mark Key
 RECESSED ENTRY
 VP Buildings to supply
 FP12 wall panels (above
 masonry), FP12 soffit,
 and assoc. trim. Secondary
 is Not By VP (NBVP).

PLEASE FURNISH SECTION THROUGH
 GABLE ROOF PROJECTION OVER RECESSED
 ENTRY



COVERING ELEVATION AT 8

COVERING ELEVATION AT A - ARMORY (LEAN-TO)

Shape Name = Operations Building, Wall = 4, Shape = Operations Building Lean-to, Wall = 3

- PRE-DRILLING 1/8 DIAMETER HOLES FOR WALL STRUCTURAL FASTENERS MAY BE REQUIRED AT 11 GAGE GIRTS, NESTED GIRTS, GIRT LAP LOCATIONS, AND/OR SECONDARY STRUCTURAL BEAMS
- WALL SHEETS ARE AN INTEGRAL PART OF THE STRUCTURAL SYSTEM, REMOVAL OR ALTERATION WITHOUT PRIOR AUTHORIZATION IS PROHIBITED.
- PANELS SHOWN WITH A LENGTH LESS THAN 1-0, 5-0 FOR SSR, MAY HAVE TO BE FIELD CUT.
- SEE JOB DETAILS FOR SHEETING AND TRIM FASTENER SPECIFICATION.

THE VP ENGINEER'S SEAL APPLIES ONLY TO THE WORK PRODUCT OF VP AND DESIGN AND PERFORMANCE REQUIREMENTS SPECIFIED BY VP. THE VP ENGINEER'S SEAL DOES NOT APPLY TO THE PERFORMANCE OR DESIGN OF ANY OTHER PRODUCT OR COMPONENT FURNISHED BY VP EXCEPT TO ANY DESIGN OR PERFORMANCE REQUIREMENTS SPECIFIED BY VP.

THIS DRAWING, INCLUDING THE INFORMATION HEREON, REMAINS THE PROPERTY OF VP BUILDINGS. IT IS PROVIDED SOLELY FOR ERECTING THE BUILDING DESCRIBED IN THE APPLICABLE PURCHASE ORDER AND SHALL NOT BE MODIFIED, REPRODUCED OR USED FOR ANY OTHER PURPOSE WITHOUT PRIOR WRITTEN APPROVAL OF VP BUILDINGS.

THE GENERAL CONTRACTOR AND/OR ERECTOR IS SOLELY RESPONSIBLE FOR ACCURATE, GOOD QUALITY WORKMANSHIP IN ERECTING THIS BUILDING IN CONFORMANCE WITH THIS DRAWING, DETAILS REFERENCED IN THIS DRAWING, ALL APPLICABLE VP ERECTION GUIDES, AND INDUSTRY STANDARDS PERTAINING TO PROPER ERECTION, INCLUDING THE CORRECT USE OF TEMPORARY BRACING.

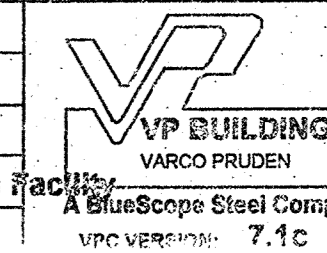
VP Buildings
 3200 Players Club Circle Memphis TN 38125

REV	DATE	BY	DESCRIPTION

NTS

COVERING ELEVATION AT 8

BUILDER	Broadmoor, LLC
CUSTOMER	John F. Stennis Space Center
LOCATION	Stennis Space Center, Mississippi
PROJECT	Riverine and Combatant Craft Operations Facility
BUILDERS PO#	



JOBNO	08-28914
DATE	2/12/2009
DRAWN/CHECK	WV/M
PAGE	38