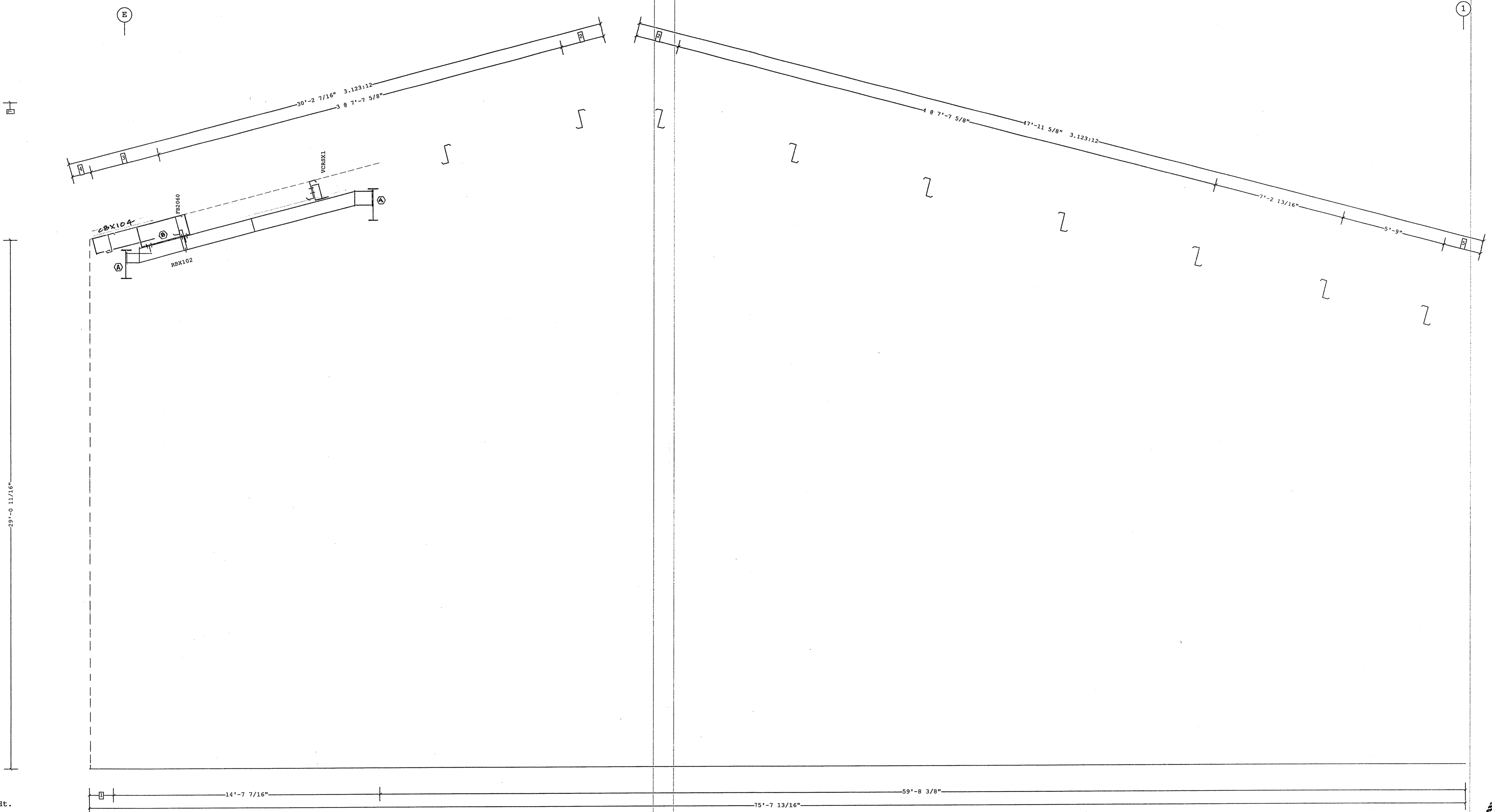


| Frame Member Schedule |     |       |       |         |        |        |
|-----------------------|-----|-------|-------|---------|--------|--------|
| Part                  | Mem | Width | Thick | WebThk. | Depth1 | Depth2 |
| RBX102                | 1   | 5"    | .1875 | .1345   | 9"     | 9"     |
|                       | 2   | 5"    | .1875 | .1345   | 9"     | 9"     |

| Bolt Connection & Plate Schedule |     |      |           |             |              |          |         |              |        |
|----------------------------------|-----|------|-----------|-------------|--------------|----------|---------|--------------|--------|
| Id                               | Qty | ASTM | Bolt Dia. | Bolt Length | Plate Thick. | Rows Out | Rows In | Tension Bolt | Washer |
| A                                | 4   | A325 | 3/4"      | 2"          | 3/8"         | 1        | 1       |              | YES    |
| B                                | 0   | A325 | 1/2"      | 1 1/2"      |              |          |         |              |        |

Frame Clearances  
 Finished Floor Elevation = 100'-0" (Unless Noted Otherwise)



- 7 36'-8" Ridge Ht.
- 6 1'-10"
- 5 2'-0 11/16"
- 4 1'-1 1/8"
- 3 3'-9 13/16"
- 2 2'-4 11/16"
- 1 1'-4"

Dimension Key

FRAME CROSS SECTION AT VALLEY

Shape Name = Operations Building Wall 3, Frame 2

1. USE 1/2 X 1 1/2 A325 SNUG TIGHTENED BOLTS FOR PURLIN TO FRAME, GIRT TO FRAME, AND GIRT TO CLIP CONNECTIONS UNLESS NOTED OTHERWISE.  
 2. SLOT REINFORCEMENT PLATES NEED NOT BE LOCATED ON THE SAME SIDE OF THE WEB AS THE HILLSIDE WASHER.

THE VP ENGINEER'S SEAL APPLIES ONLY TO THE WORK PRODUCT OF VP AND DESIGN AND PERFORMANCE REQUIREMENTS SPECIFIED BY VP. THE VP ENGINEER'S SEAL DOES NOT APPLY TO THE PERFORMANCE OR DESIGN OF ANY OTHER PRODUCT OR COMPONENT FURNISHED BY VP EXCEPT TO ANY DESIGN OR PERFORMANCE REQUIREMENTS SPECIFIED BY VP.

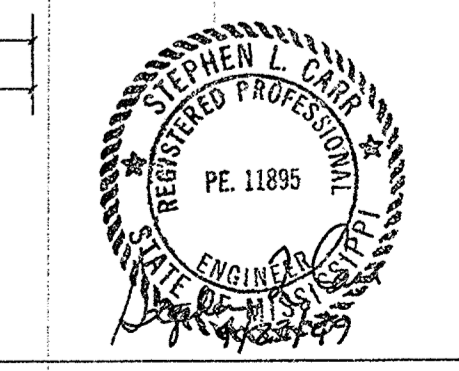
THIS DRAWING, INCLUDING THE INFORMATION HEREON, REMAINS THE PROPERTY OF VP BUILDINGS. IT IS PROVIDED SOLELY FOR ERECTING THE BUILDING DESCRIBED IN THE APPLICABLE PURCHASE ORDER AND SHALL NOT BE MODIFIED, REPRODUCED OR USED FOR ANY OTHER PURPOSE WITHOUT PRIOR WRITTEN APPROVAL OF VP BUILDINGS.

THE GENERAL CONTRACTOR AND/OR ERECTOR IS SOLELY RESPONSIBLE FOR ACCURATE, GOOD QUALITY WORKMANSHIP IN ERECTING THIS BUILDING IN CONFORMANCE WITH THIS DRAWING. DETAILS REFERENCED IN THIS DRAWING, ALL APPLICABLE VP ERECTION GUIDES, AND INDUSTRY STANDARDS PERTAINING TO PROPER ERECTION, INCLUDING THE CORRECT USE OF TEMPORARY BRACING.

| VP Buildings                              |      |    |             |
|---|------|----|-------------|
| 3200 Players Club Circle Memphis TN 38125 |      |    |             |
| REV                                       | DATE | BY | DESCRIPTION |
|   |      |    |             |
|   |      |    |             |
|   |      |    |             |
|   |      |    |             |

|              |  |
|--------------|--|
| BUILDER      | Broadmoor, LLC                                   |
| CUSTOMER     | John F. Stennis Space Center                     |
| LOCATION     | Stennis Space Center, Mississippi                |
| PROJECT      | Riverine and Combatant Craft Operations Facility |
| BUILDERS PO# |  |

|                               |  |
|-------------------------------|--|
| FRAME CROSS SECTION AT VALLEY |  |
| BUILDER                       | Broadmoor, LLC                                   |
| CUSTOMER                      | John F. Stennis Space Center                     |
| LOCATION                      | Stennis Space Center, Mississippi                |
| PROJECT                       | Riverine and Combatant Craft Operations Facility |
| BUILDERS PO#                  |  |



|             |              |
|-------------|--------------|
| JOB#        | 08-28914 EP1 |
| DATE        | 16 APR 09    |
| DRAWN/CHECK | PCD          |
| PAGE        | 14 of 90     |