

DAMMON
ENGINEERING, INC

CHIEF ENGINEER

EMMETT DAMMON, P.E.

CHIEF ARCHITECT

ROBERT WILTSE

1095 FLORIDA AVENUE

SLIDELL, LA. 70458

OFFICE: 985-649-5832

FAX: 985-641-5950

WEBSITE: WWW.DAMMONENGINEERING.COM

EMAIL: DAMMONENG@BLSOUTH.NET

ARCHITECTURE

ENGINEERING

STUDIES

PLANNING

INVESTIGATION

EXPERT WITNESS

NEW ASSISTED LIVING COMPLEX

ADRIAN LENEZEWSKI

HARDIN RD.

SUDELL, LA

PRELIMINARY SITE PLAN

REV:

SCALE: AS NOTED

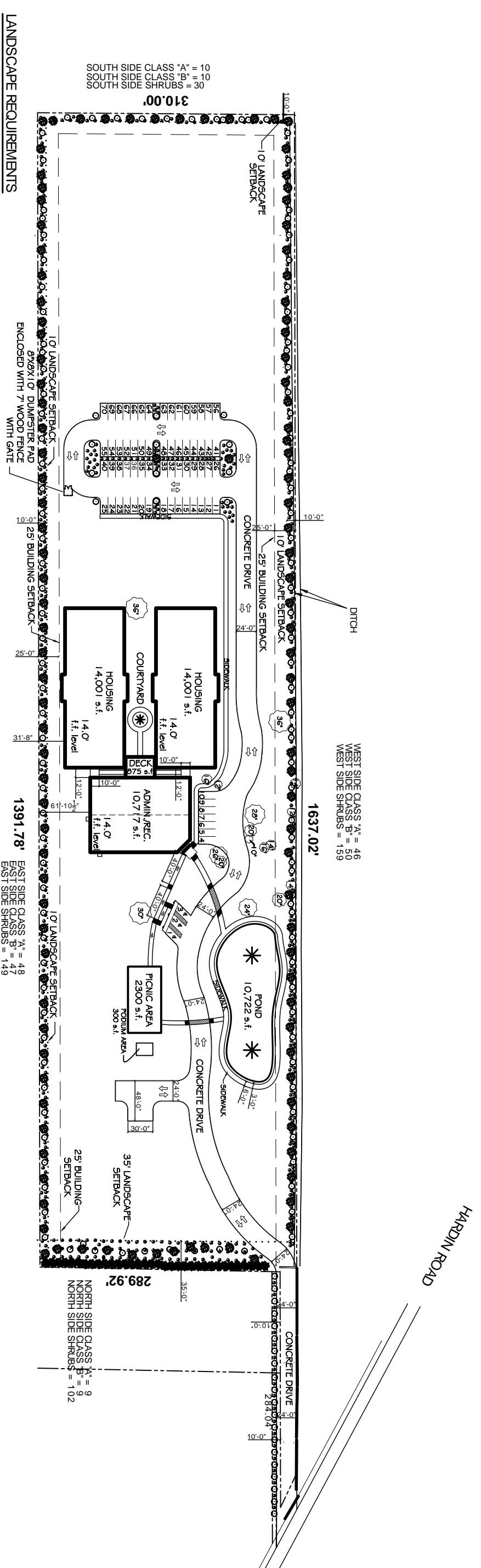
JOB#: 1863

DATE: 7-15-08

SHEET

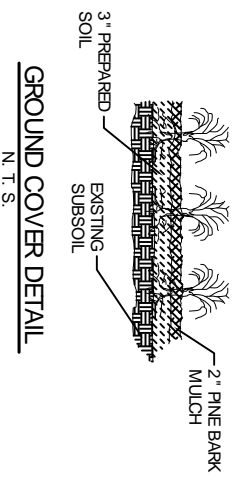
C-1

OF



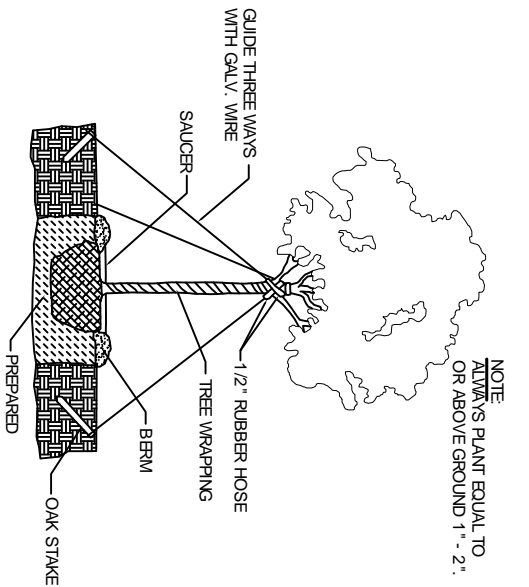
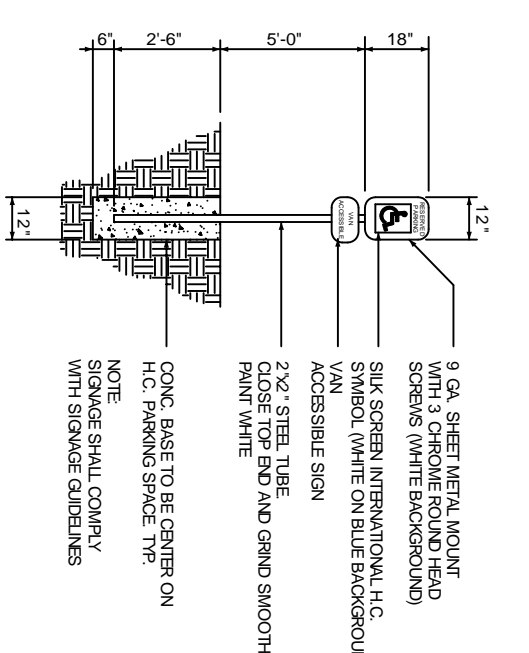
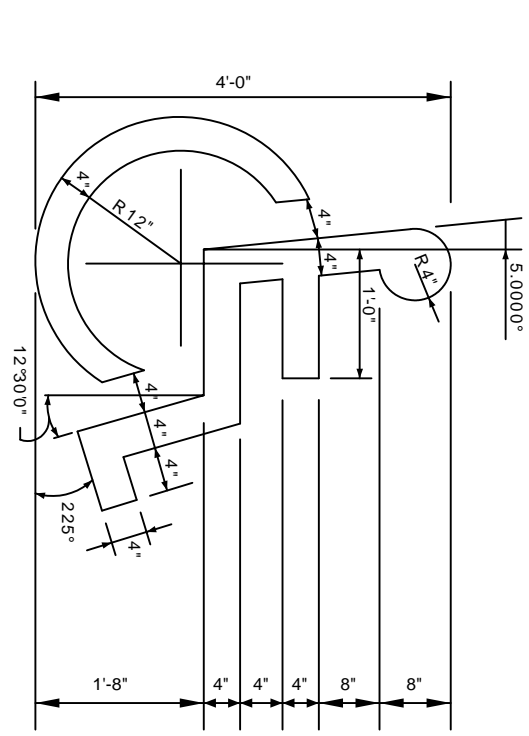
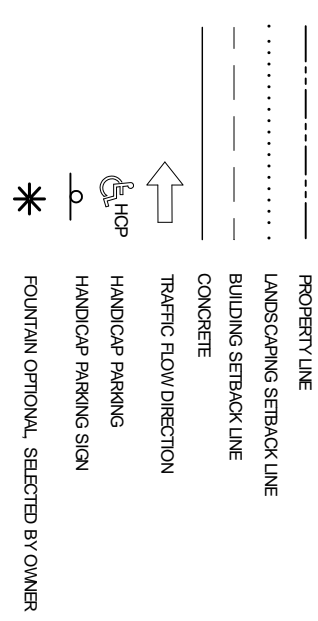
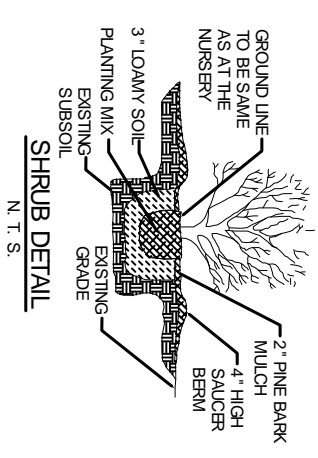
LANDSCAPE REQUIREMENTS

- CLASS "A" - 2-1/2" CALIBER, MINIMUM HEIGHT OF 10' TO 12' AND AND 5' FOOT SPAN, PLANTED ONE EVERY 30' O.C. - TOTAL 113
- CLASS "B" - MINIMUM OF 8' TO 10' HIGH CALIBER OF 1-1/2" ONE PER 30' O.C. - TOTAL 124
- SHRUB, ONE PER 10' O.C. - TOTAL 448
- EVERGREEN TREE, MINIMUM OF 16' HIGH, ONE PER 8' O.C.
- EXISTING LIVE OAK TO REMAIN



LEGAL DESCRIPTION
BOUNDARY AND TREE SURVEY OF 10.40 ACRES LOCATED IN SECTION 18 T-9-S, R-15-E ST. TAMMANY PARISH, LOUISIANA

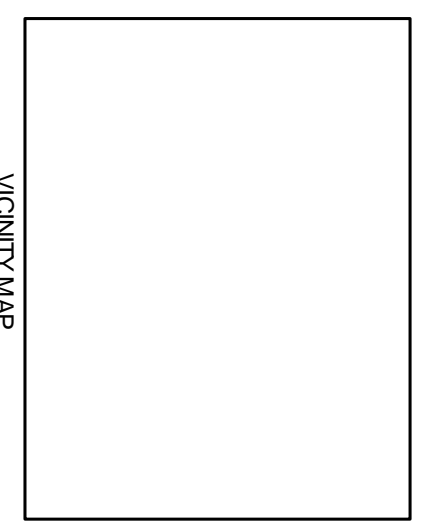
ZONING I-1



HANDICAP SYMBOL DETAIL

HANDICAP PARKING SIGN

TYPICAL TREE PLANTING DETAIL



VICINITY MAP