

**DAMMON**  
ENGINEERING, INC.

CHIEF ENGINEER  
EMMETT DAMMON, P.E.  
CHIEF ARCHITECT  
ROBERTI WILTSE

1095 FLORIDA AVENUE  
SUDBELL, LA. 70458  
OFFICE: 985-649-5632  
FAX: 985-641-5950

WEBSITE:  
WWW.DAMMONENGINEERING.COM  
EMAIL:  
DAMMONENG@BELLSOUTH.NET

ARCHITECTURE  
ENGINEERING  
STUDIES  
PLANNING  
INVESTIGATION  
EXPERT WITNESS

NEW ASSISTED  
LIVING COMPLEX

ADRIAN  
HARDIN RD.  
SUDBELL, LA

PRELIMINARY  
SITE PLAN

REV:

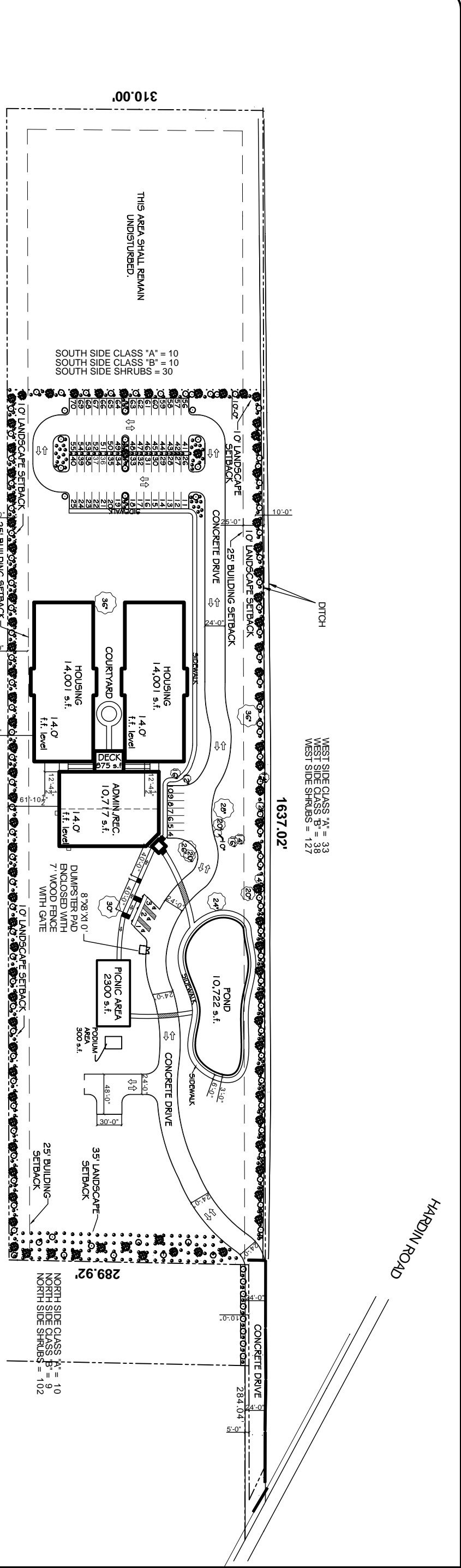
SCALE AS NOTED

JOB#: 1863

DATE: 7-15-08

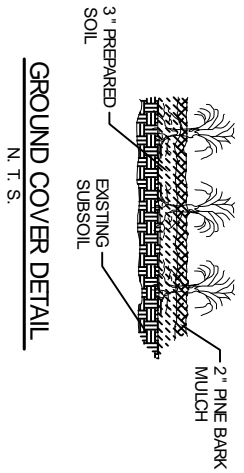
SHEET

C-1



**LANDSCAPE REQUIREMENTS**

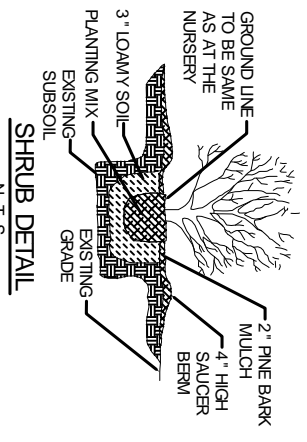
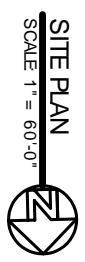
- CLASS 'A' - 2-1/2" CALIBER, MINIMUM HEIGHT OF 10' TO 12' AND AND 5' FOOT SPAN, PLANTED ONE EVERY 30' O.C. - TOTAL 88
- CLASS 'B' - MINIMUM OF 8' TO 10' HIGH CALIBER OF 1-1/2" ONE PER 30' O.C. - TOTAL 100
- SHRUB, ONE PER 10' O.C. - TOTAL 384
- EXISTING LIVE OAK TO REMAIN



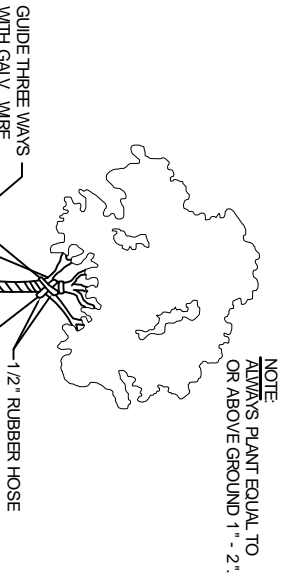
**GROUND COVER DETAIL**  
N.T.S.

**LEGAL DESCRIPTION**  
BOUNDARY AND TREE SURVEY OF 10.40 ACRES LOCATED IN SECTION 18 T-9-S, R-15-E ST. TAMMANY PARISH, LOUISIANA

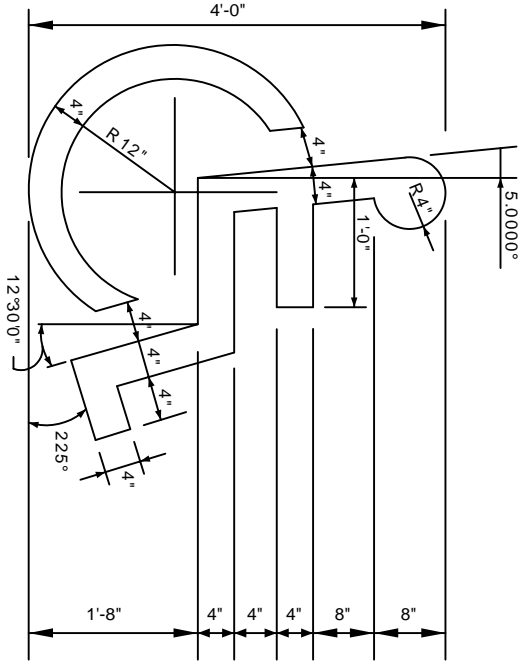
**ZONING I-1**



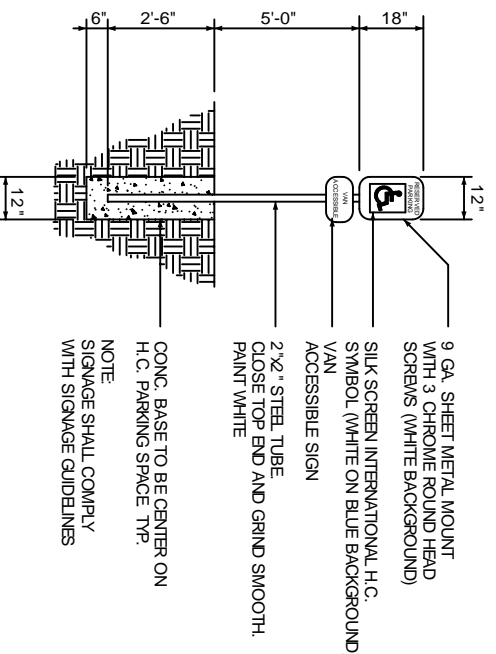
**SHRUB DETAIL**  
N.T.S.



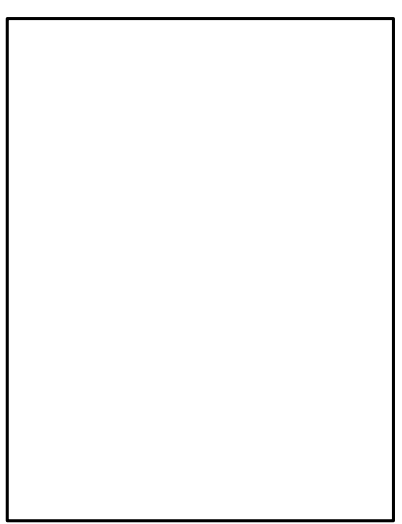
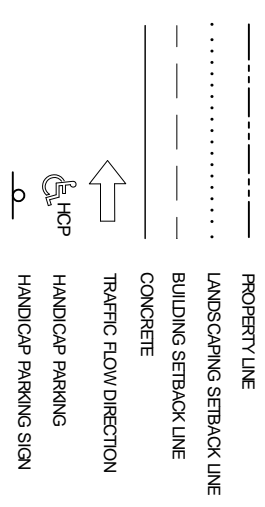
**TYPICAL TREE PLANTING DETAIL**  
N.T.S.



**HANDICAP SYMBOL DETAIL**  
N.T.S.



**HANDICAP PARKING SIGN**  
N.T.S.



**VICINITY MAP**  
N.T.S.

OF