

DAMMON ENGINEERING, INC.
 CHIEF ENGINEER
 EMMETT DAMMON, P.E.

CHIEF ARCHITECT
 ROBERT WILTSE

1095 FLORIDA AVENUE
 SUIDELL, LA. 70458
 OFFICE: 985-649-5832
 FAX: 985-641-5950

WEBSITE:
 WWW.DAMMONENGINEERING.COM
 EMAIL:
 DAMMONEN@BELLSTATE.NET

ARCHITECTURE
 ENGINEERING
 STUDIES
 PLANNING
 INVESTIGATION
 EXPERT WITNESS

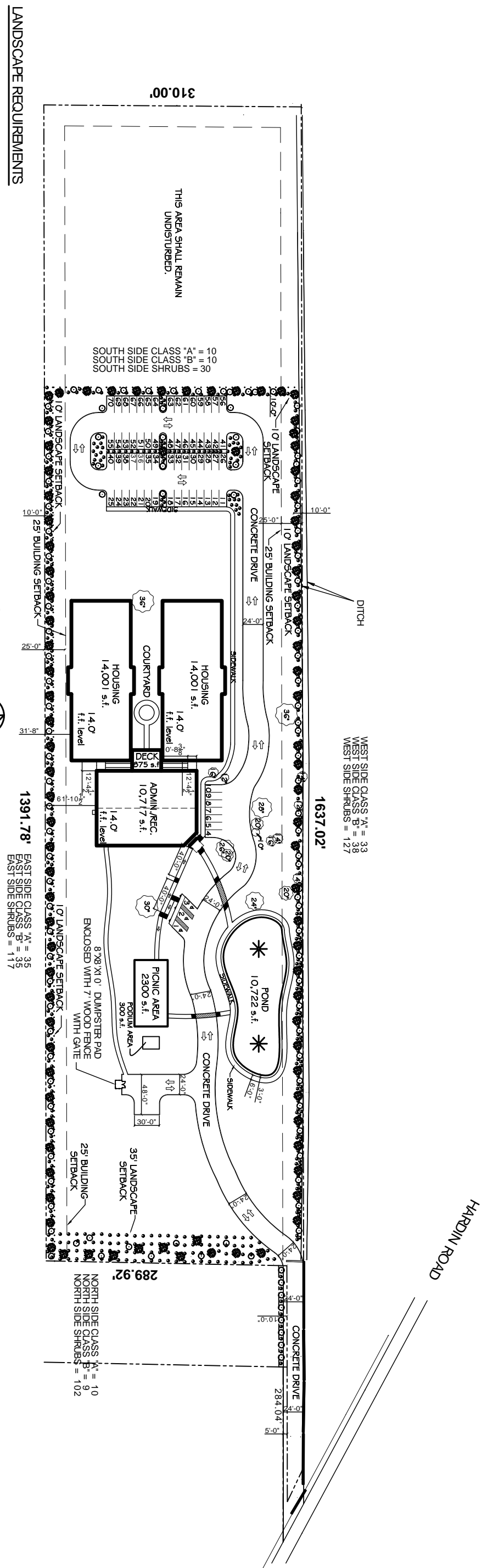
NEW ASSISTED LIVING COMPLEX

ADRIAN
 HARDIN RD.
 SUIDELL, LA

PRELIMINARY SITE PLAN

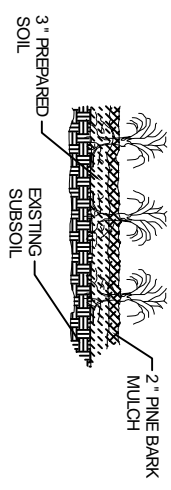
REV:
 SCALE: AS NOTED
 JOB#: 1863
 DATE: 7-15-08
 SHEET

OF
C-1



LANDSCAPE REQUIREMENTS

- CLASS 'A' - 2-1/2" CALIPER MINIMUM HEIGHT OF 10' TO 12' AND AND 5' FOOT SPAN, PLANTED ONE EVERY 30' O.C. - TOTAL 88
- CLASS 'B' - MINIMUM OF 8' TO 10' HIGH, CALIPER OF 1-1/2" ONE PER 30' O.C. - TOTAL 100
- SHRUB, ONE PER 10' O.C. - TOTAL 384
- EXISTING LIVE OAK TO REMAIN

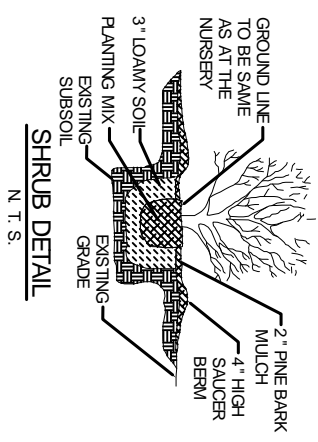


GROUND COVER DETAIL
 N.T.S.

ZONING I-1

LEGAL DESCRIPTION
 BOUNDARY AND TREE SURVEY OF 10.40 ACRES LOCATED IN SECTION 18 T-9-S, R-15-E-ST. TAMMANY PARISH, LOUISIANA

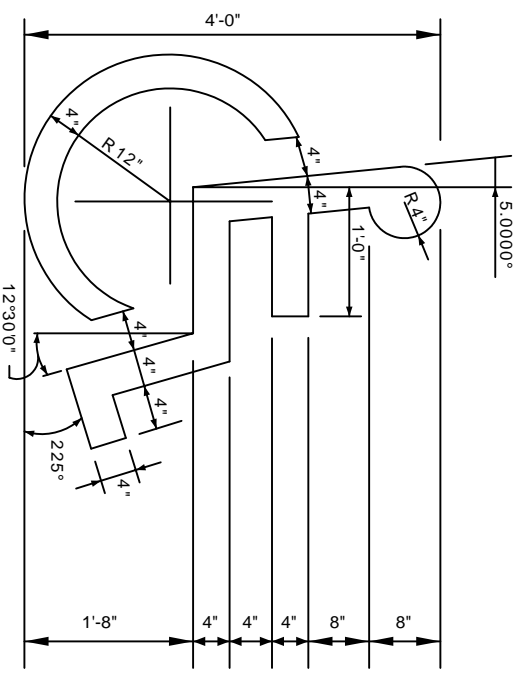
SHRUB DETAIL
 N.T.S.



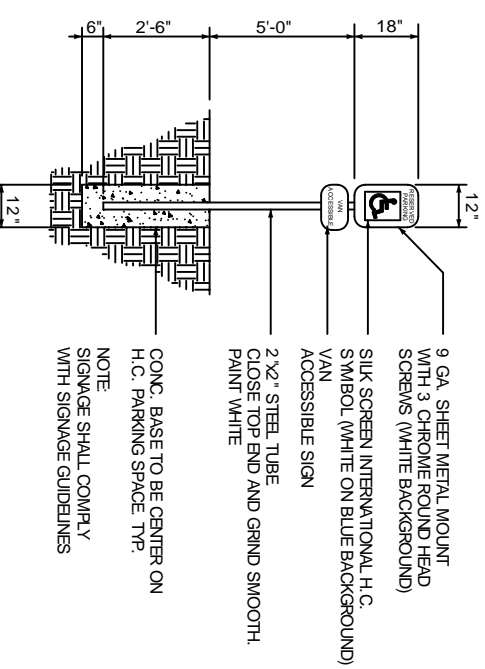
NOTE
 ALWAYS PLANT EQUAL TO OR ABOVE GROUND 1" - 2"

LEGEND

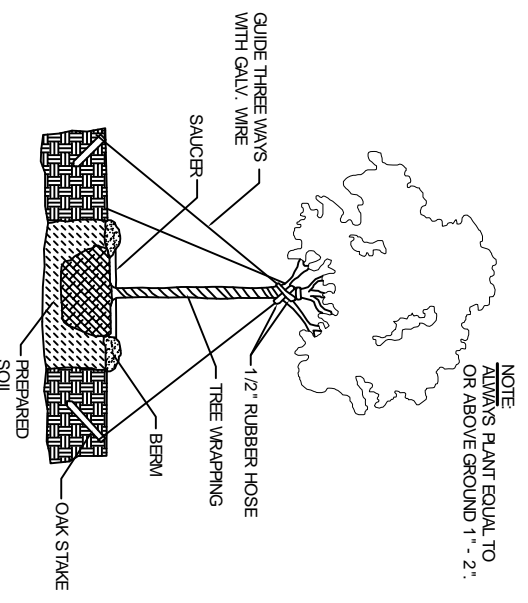
- PROPERTY LINE
- LANDSCAPING SETBACK LINE
- BUILDING SETBACK LINE
- CONCRETE
- ↑ TRAFFIC FLOW DIRECTION
- ♿ HANDICAP PARKING
- ♿ HANDICAP PARKING SIGN
- * FOUNTAIN, SELECTED BY OWNER



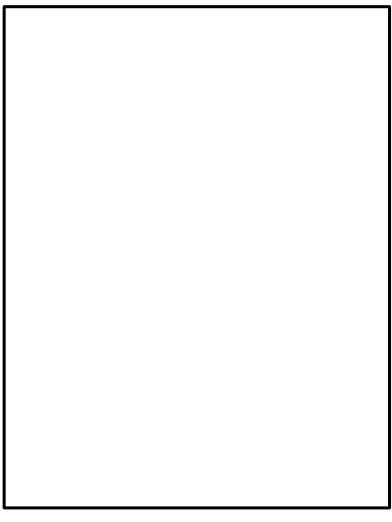
HANDICAP SYMBOL DETAIL
 N.T.S.



HANDICAP PARKING SIGN
 N.T.S.



TYPICAL TREE PLANTING DETAIL
 N.T.S.



VICINITY MAP
 N.T.S.