

DAMMON
ENGINEERING, INC.

CHIEF ENGINEER
EMMETT
DAMMON, P.E.

CHIEF ARCHITECT
ROBERT
WILTSE

1095 FLORIDA AVENUE
SLIDELL, LA. 70458
OFFICE: 985-649-5832
FAX: 985-641-5950

WEBSITE:
WWW.DAMMONENGINEERING.COM

EMAIL:
DAMMONENG@BELLSOUTH.NET

ARCHITECTURE

ENGINEERING

STUDIES

PLANNING

INVESTIGATION

EXPERT WITNESS

SOUTHEAST
LOUISIANA
VETERAN'S
HEALTH CARE
SYSTEM

UNIT B
REFLECTED
CEILING
PLAN

REV:

SCALE: AS NOTED

JOB#: 2009

DATE: 02-03-09

SHEET 6

A-3

OF 14

LEGEND

☒ - SUPPLY AIR

☑ - RETURN AIR

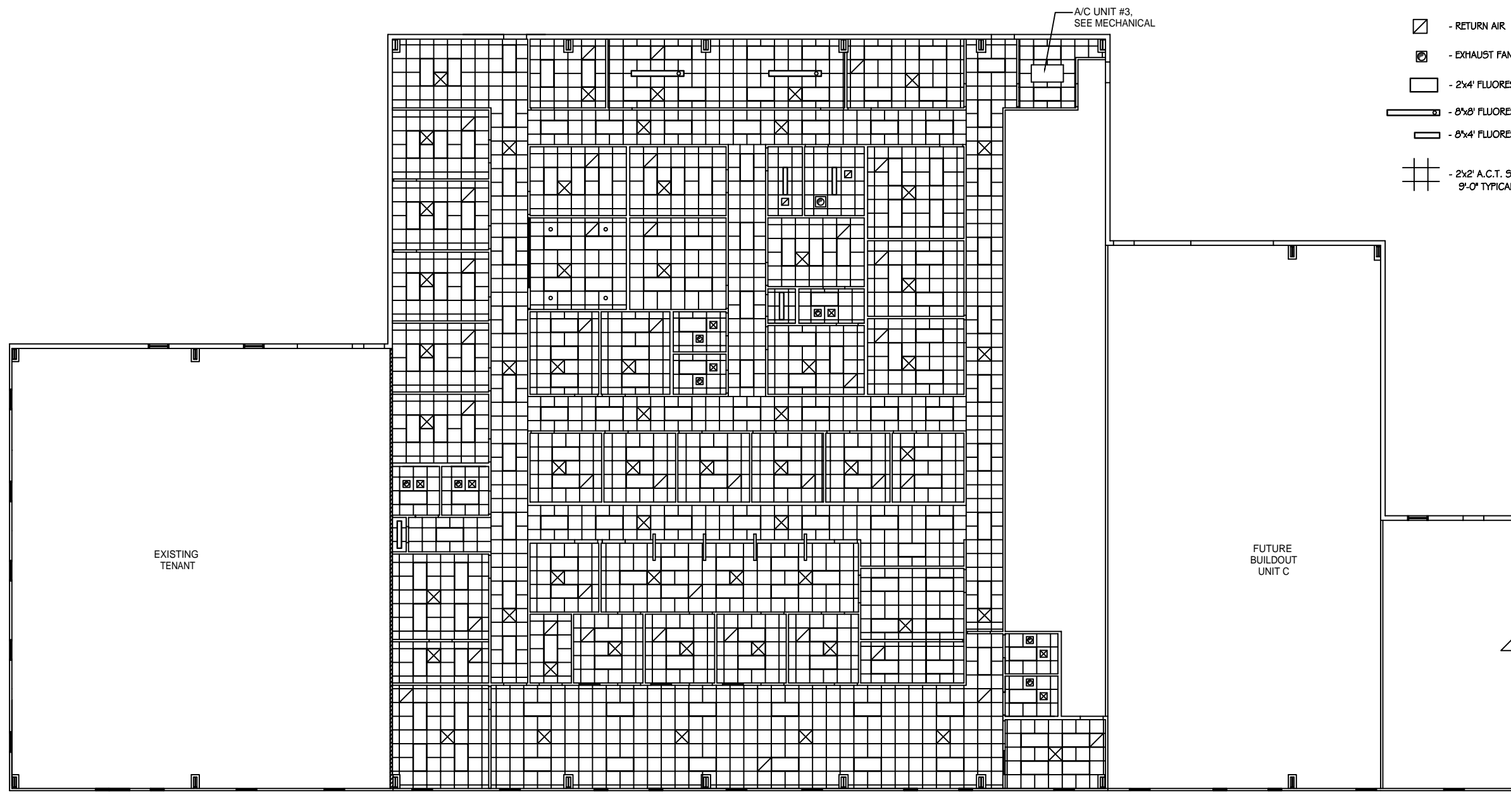
⊗ - EXHAUST FAN

□ - 2x4' FLUORESCENT LIGHT

▬ - 8x8' FLUORESCENT LIGHT

▬ - 8x4' FLUORESCENT LIGHT

⊞ - 2x2' A.C.T. SUSPENDED CEILING
9'-0" TYPICAL CEILING HEIGHT



REFLECTED CEILING PLAN - UNIT B

SCALE: 1/8"=1'

