

**DAMMON ENGINEERING, INC.**

CHIEF ENGINEER  
EMMETT  
DAMMON, P.E.

CHIEF ARCHITECT  
ROBERT  
WILTSE

1095 FLORIDA AVENUE  
SUDELL, LA. 70458  
OFFICE: 985-649-5832  
FAX: 985-641-5950

WEBSITE:  
WWW.DAMMONENGINEERING.COM  
EMAIL:  
DAMMONENG@BELLSOUTH.NET

ARCHITECTURE  
ENGINEERING  
STUDIES  
PLANNING  
INVESTIGATION  
EXPERT WITNESS

SOUTHEAST  
LOUISIANA  
VETERAN'S  
HEALTH CARE  
SYSTEM

SUITE C  
MECHANICAL  
PLAN

REV:

SCALE: AS NOTED

JOB#: 2011

DATE: 04-06-09

SHEET 9

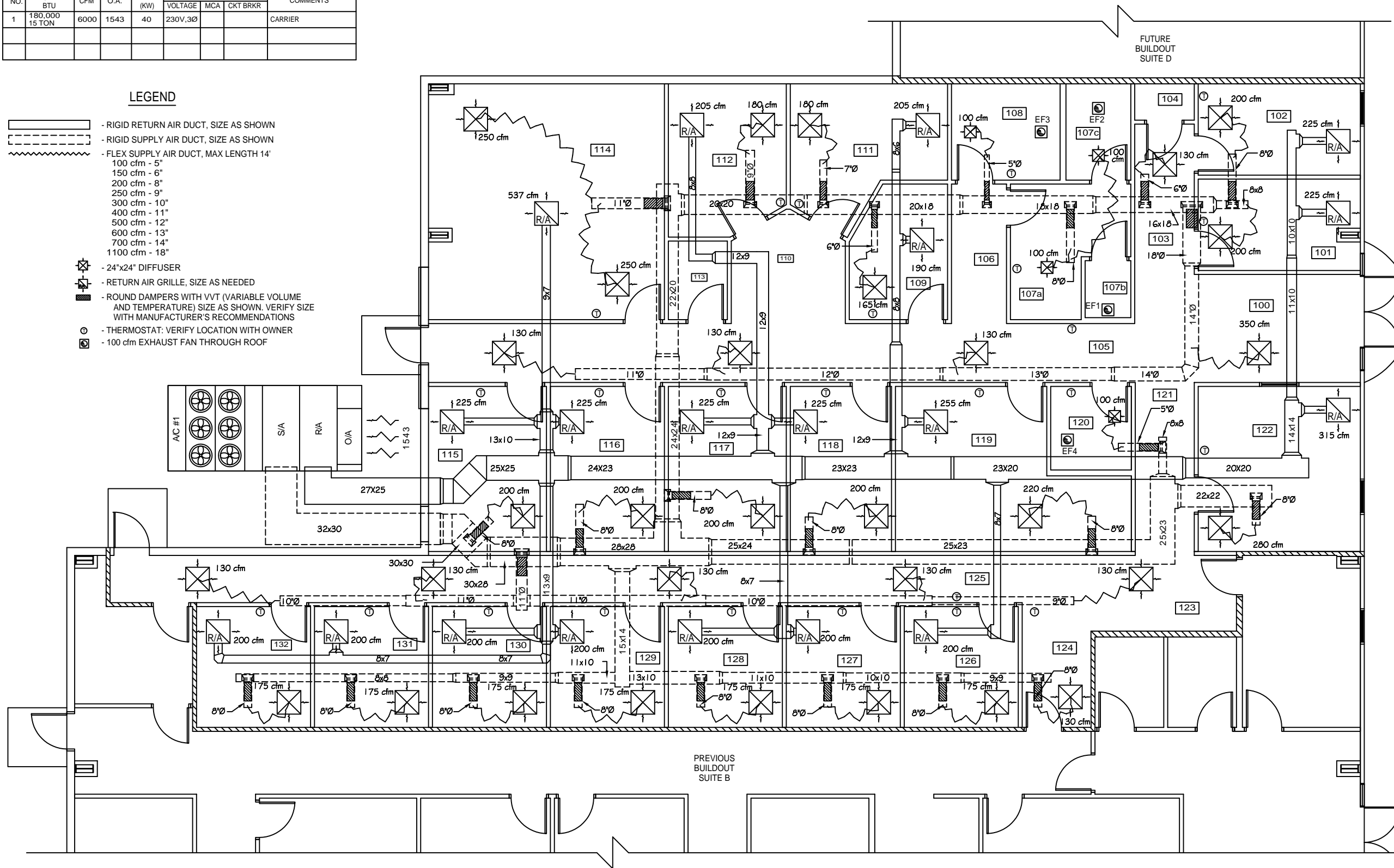
**M-1**

OF 14

A/C UNIT SCHEDULE								
NO.	TOTAL BTU	CFM	O.A.	HEAT (KW)	ELECTRICAL		COMMENTS	
					VOLTAGE	MCA	CKT BRKR	
1	180,000 15 TON	6000	1543	40	230V,3Ø			CARRIER

**LEGEND**

- RIGID RETURN AIR DUCT, SIZE AS SHOWN
- RIGID SUPPLY AIR DUCT, SIZE AS SHOWN
- FLEX SUPPLY AIR DUCT, MAX LENGTH 14'
- 100 cfm - 5"
- 150 cfm - 6"
- 200 cfm - 8"
- 250 cfm - 9"
- 300 cfm - 10"
- 400 cfm - 11"
- 500 cfm - 12"
- 600 cfm - 13"
- 700 cfm - 14"
- 1100 cfm - 18"
- 24"x24" DIFFUSER
- RETURN AIR GRILLE, SIZE AS NEEDED
- ROUND DAMPERS WITH VVT (VARIABLE VOLUME AND TEMPERATURE) SIZE AS SHOWN. VERIFY SIZE WITH MANUFACTURER'S RECOMMENDATIONS
- THERMOSTAT: VERIFY LOCATION WITH OWNER
- 100 cfm EXHAUST FAN THROUGH ROOF



MECHANICAL PLAN-SUITE C

SCALE: 1/4"=1'

