

DAMMON ENGINEERING, INC.

CHIEF ENGINEER
EMMETT
DAMMON, P.E.

CHIEF ARCHITECT
ROBERT
WILTSE

1095 FLORIDA AVENUE
SLIDELL, LA. 70458
OFFICE: 985-649-5032
FAX: 985-641-5950

WEBSITE:
WWW.DAMMONENGINEERING.COM

EMAIL:
DAMMONENG@BELLSOUTH.NET

- ARCHITECTURE
- ENGINEERING
- STUDIES
- PLANNING
- INVESTIGATION
- EXPERT WITNESS

SOUTHEAST
LOUISIANA
VETERANS
HEALTH CARE
SYSTEM

SITE
PLAN

REV:

SCALE: AS NOTED

JOB#: 2012

DATE: 03-12-09

SHEET 2

C-2

OF 11

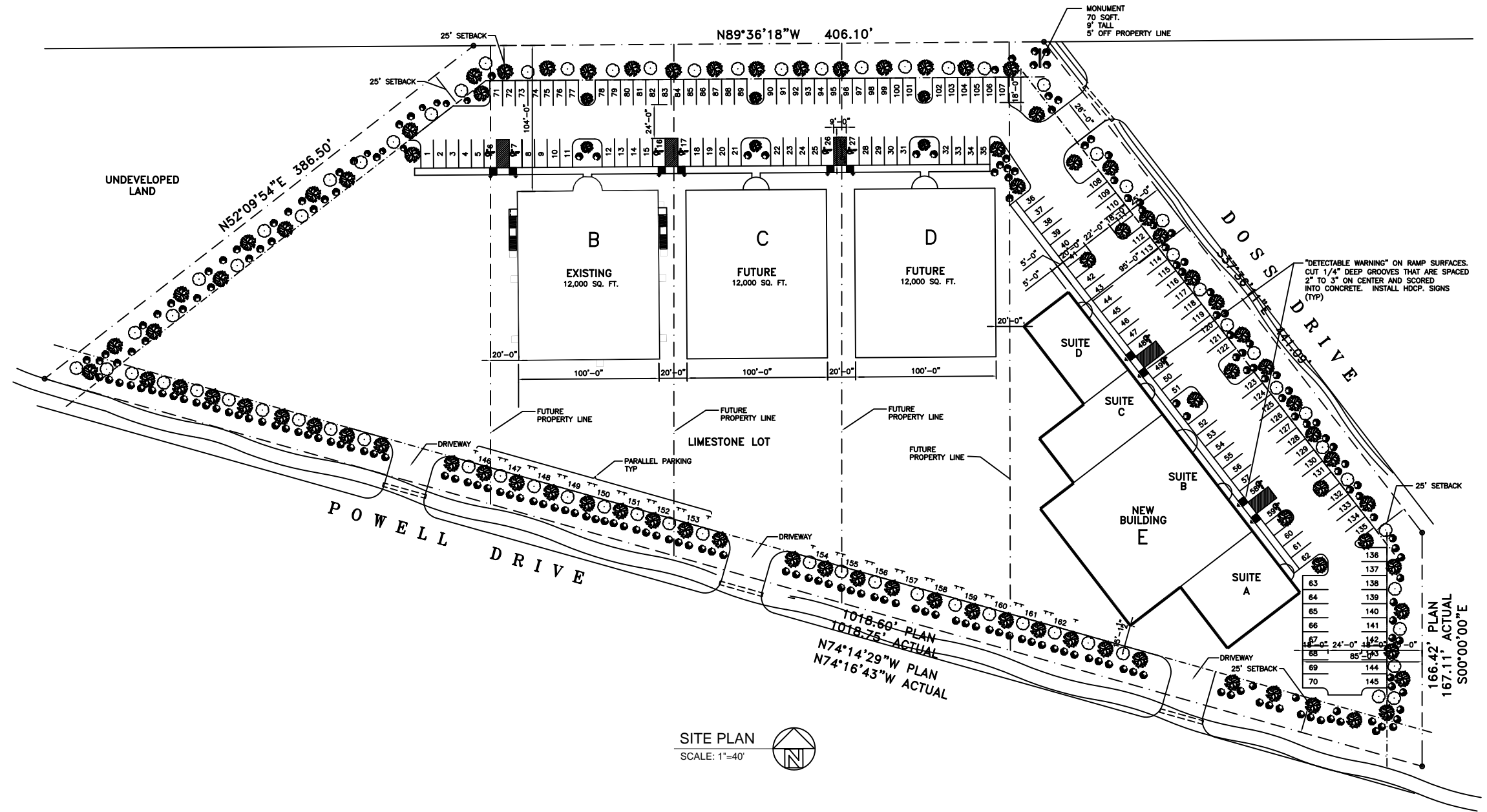
PARKING REQUIREMENTS:

- 1 SPACE PER 350 SQ.FT. OF OFFICE SPACE
- 1 SPACE PER 750 SQ.F.T. OF WAREHOUSE SPACE
- TOTAL REQUIRED=160
- TOTAL PROVIDED=162

LEGEND:

- PROPERTY LINE
- SETBACK LINE
- NEW BUILDING
- CLASS "A" TREE--MINIMUM OF 10' TO 12' HIGH, CALIPER OF 2-1/2" MEASURED AT 1-1/2 FT ABOVE THE GROUND
- CLASS "B" TREE--MINIMUM OF 8' TO 10' HIGH, CALIPER OF 1-1/2" MEASURED AT 1-1/2 FT ABOVE THE GROUND
- SHRUB

U . S . I N T E R S T A T E H W Y . 1 2



SITE PLAN
SCALE: 1"=40'