

DAMMON
ENGINEERING, INC.

CHIEF ENGINEER
EMMETT
DAMMON, P.E.
CHIEF ARCHITECT
ROBERT
WILTSE

1095 FLORIDA AVENUE
SUDELL, LA. 70459
OFFICE: 985-649-5632
FAX: 985-641-5950

WEBSITE:
WWW.DAMMONENGINEERING.COM
EMAIL:
DAMMONENG@BELLSOUTH.NET

ARCHITECTURE
ENGINEERING
STUDIES
PLANNING
INVESTIGATION
EXPERT WITNESS

DR. EDUARDO
HERNANDEZ
HAMMOND
LOUISIANA

CHILDRENS
INTERNATIONAL
MEDICAL
GROUP
CIMG

PLUMBING
PLAN

REV:

SCALE: AS NOTED

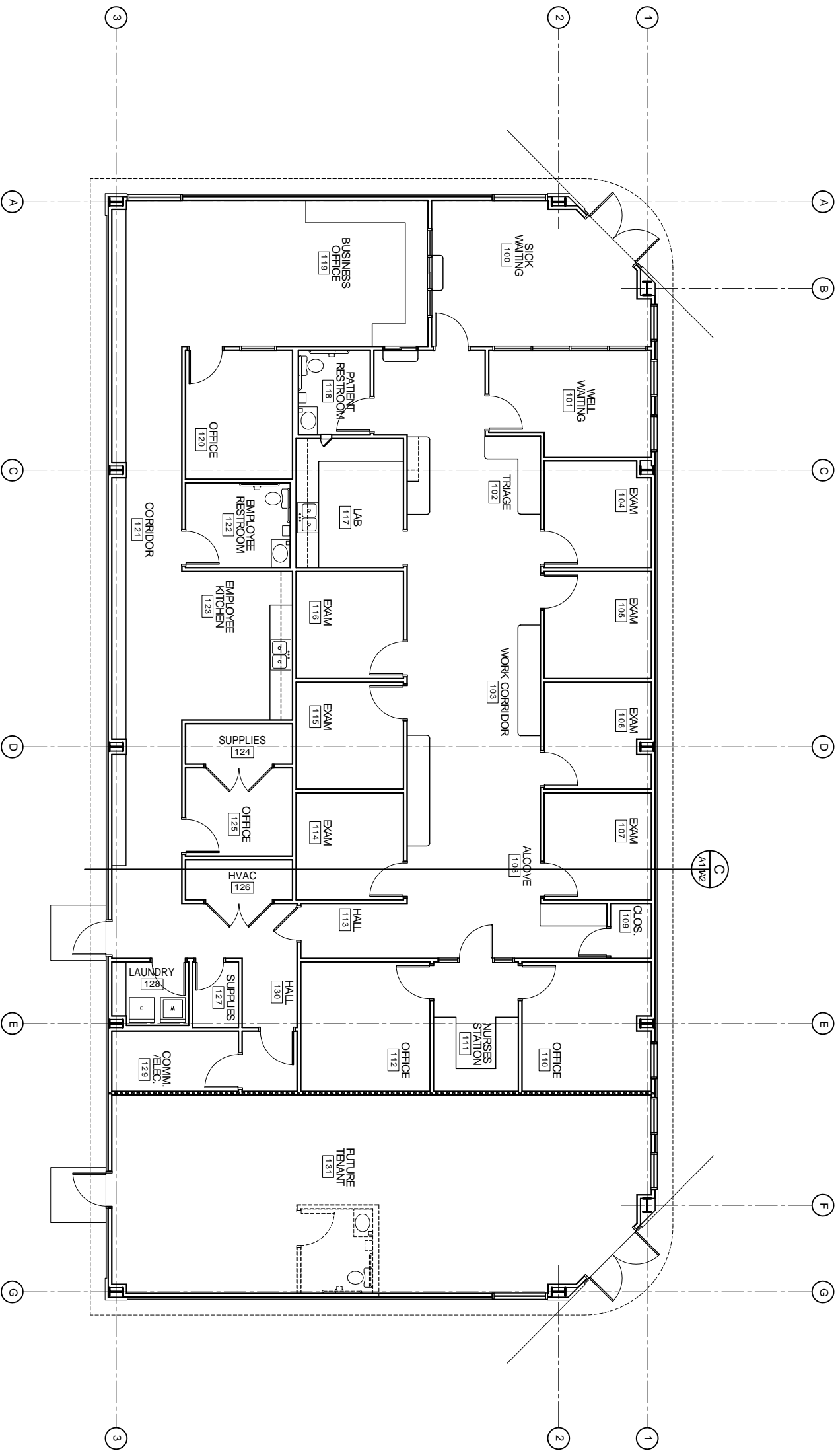
JOB#: 2042

DATE: 10-29-09

SHEET

P-1

OF



PLUMBING PLAN
SCALE: 3/16"=1'
N

NOT FOR CONSTRUCTION