

DAMMON ENGINEERING, INC.
 CHIEF ENGINEER
 EMMETT DAMMON, P.E.

CHIEF ARCHITECT
 ROBERT WILTSE

1095 FLORIDA AVENUE
 SUITE LL, 70456
 OFFICE: 985-649-5832
 FAX: 985-641-5950

WEBSITE: WWW.DAMMONENGINEERING.COM
 EMAIL: DAMMONENG@BELLSOUTH.NET

ARCHITECTURE
 ENGINEERING
 STUDIES
 PLANNING
 INVESTIGATION
 EXPERT WITNESSES

DR. EDUARDO HERNANDEZ
 HAMMOND LOUISIANA

CHILDRENS INTERNATIONAL
 MEDICAL GROUP
 CIMG

FLOOR PLAN

REV:

SCALE: AS NOTED

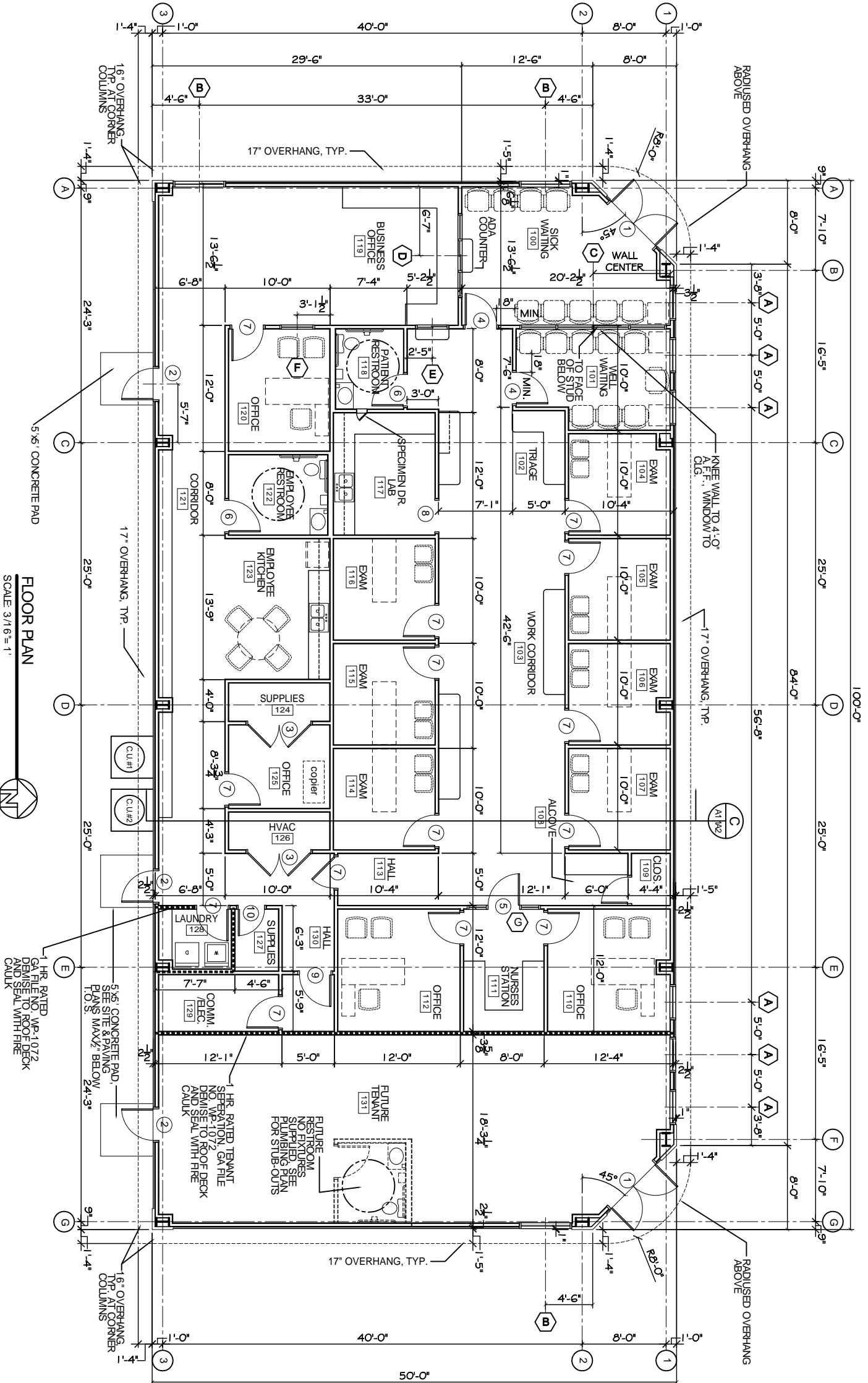
JOB#: 2042

DATE: 10-29-09

SHEET 8

A-1

OF 19

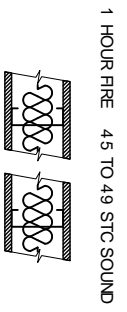


FLOOR PLAN
 SCALE 3/16" = 1'

GA FILE NO. WP 1072 GENERIC

ONE LAYER 5/8" TYPE X GYPSUM WALLBOARD OR GYPSUM VENEER BASE APPLIED PARALLEL OR AT RIGHT ANGLES TO EACH SIDE OF 3-5/8" STEEL STUDS 24" O.C. WITH 1" TYPE S DRYWALL SCREWS 8" O.C. AT VERTICAL JOINTS AND 12" O.C. AT FLOOR AND CEILING RUNNERS AND INTERMEDIATE STUDS.

JOINTS STAGGERED 24" ON EACH SIDE AND ON OPPOSITE SIDES. SOUND TESTED WITH 3-1/2" GLASS FIBER FRICTION FIT IN STUD SPACE. (NON-LOAD BEARING)



1 HOUR FIRE 4.5 TO 4.9 STC SOUND
 THICKNESS: 4-7/8"
 APPROX. WEIGHT: 6 PSF
 FIRE TEST:
 SEE WP 1200 (FM WP-45, 6-19-68), OSU T-1770, 8-61, ULC 791484, 791500, 791497, 8-12-81, ULC DESIGN WA15) NRCC 816-IV, 2-3-81