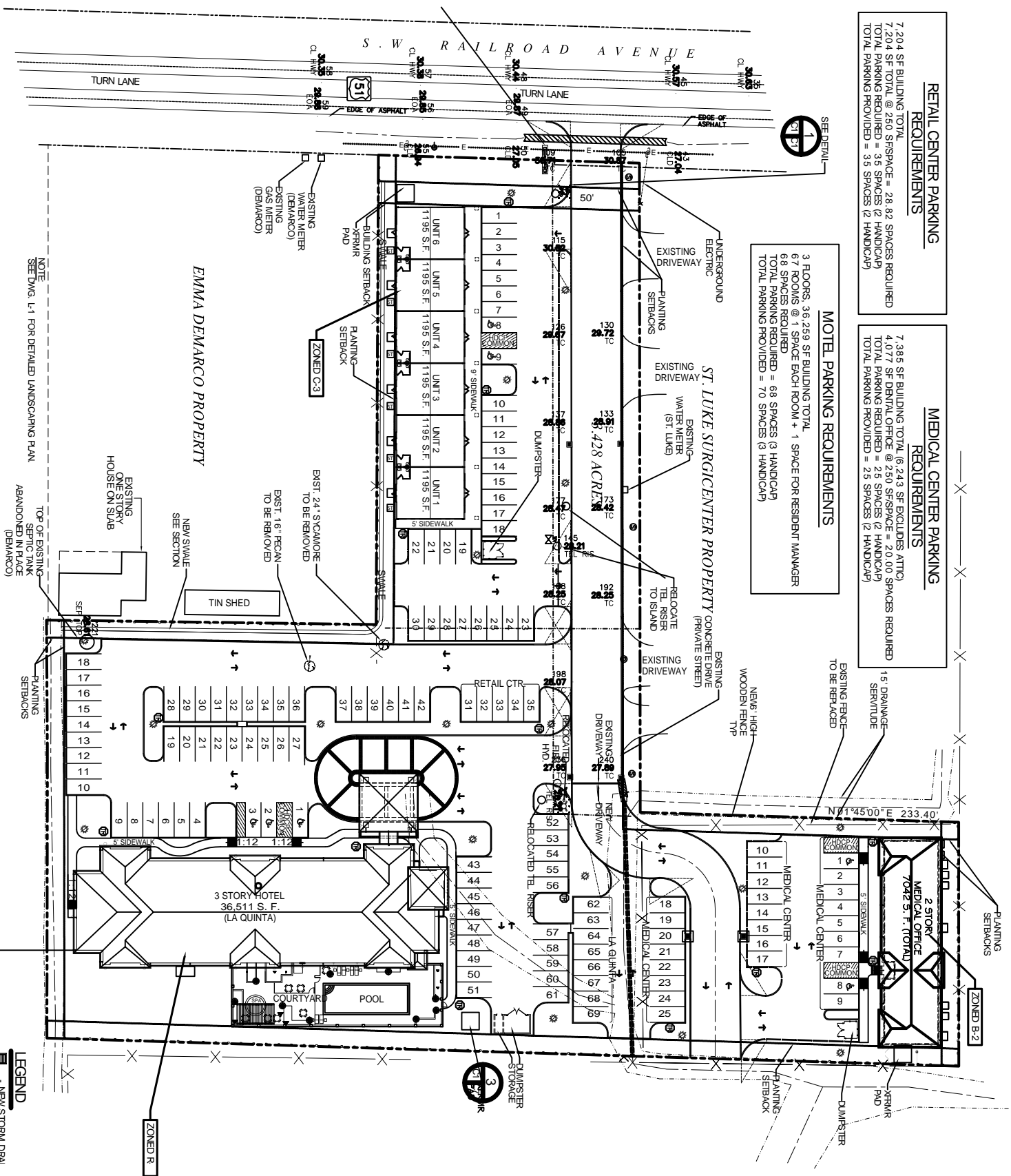


RETAIL CENTER PARKING REQUIREMENTS
 7,204 SF BUILDING TOTAL
 7,204 SF TOTAL @ 250 SF/SPACE = 28.82 SPACES REQUIRED
 TOTAL PARKING PROVIDED = 35 SPACES (2 HANDICAP)
 TOTAL PARKING PROVIDED = 35 SPACES (2 HANDICAP)

MEDICAL CENTER PARKING REQUIREMENTS
 7,385 SF BUILDING TOTAL (6,243 SF EXCLUDES ATTIC)
 4,077 SF BUILDING OFFICE @ 250 SF/SPACE = 20.00 SPACES REQUIRED
 TOTAL PARKING PROVIDED = 25 SPACES (2 HANDICAP)
 TOTAL PARKING PROVIDED = 25 SPACES (2 HANDICAP)

MOTEL PARKING REQUIREMENTS
 3 FLOORS, 386,259 SF BUILDING TOTAL
 67 ROOMS @ 1 SPACE EACH ROOM + 1 SPACE FOR RESIDENT MANAGER
 68 SPACES REQUIRED
 TOTAL PARKING PROVIDED = 68 SPACES (3 HANDICAP)
 TOTAL PARKING PROVIDED = 70 SPACES (3 HANDICAP)



NOTE
 SEE DWG. L-1 FOR DETAILED LANDSCAPING PLAN

HASE I CONSTRUCTION

SITE PLAN
 SCALE 1" = 30'-0"

LEGEND
 ■ NEW STORM DRAIN
 ● TRASH RECEPTACLE
 — CENTERLINE OF ROAD
 - - - PROPERTY LINE