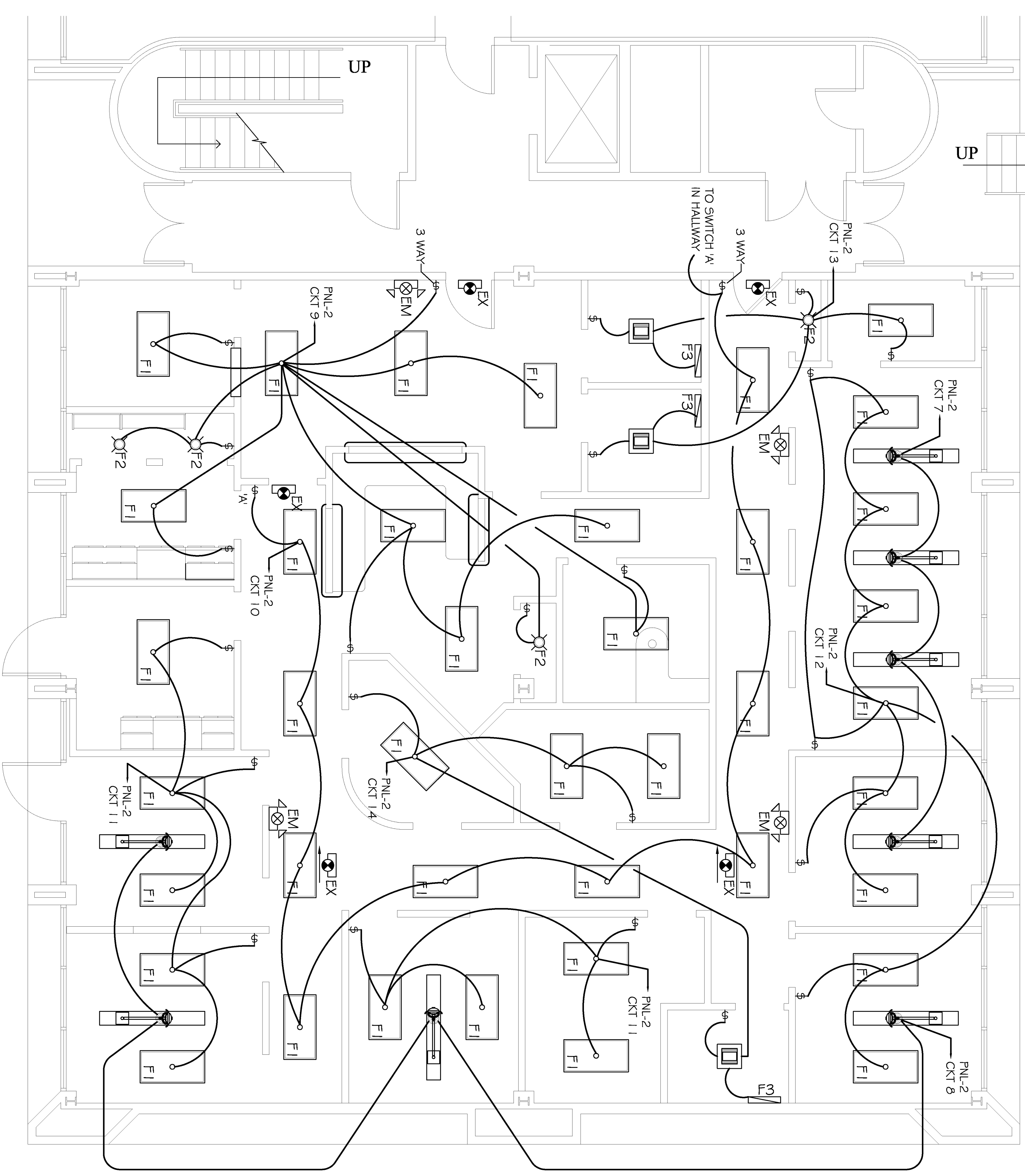


**PATTERSON DENTAL LIGHTING NOTES**  
 SEE PLANS BY PATTERSON DENTAL

DENTAL OPERATING LIGHT, CEILING MOUNTED - 115 VOLTS, 3 AMPS, WHERE DESIGNATED, RUN RIGID OR FLEX CONDUIT WITH CONNECTOR, ELECTRICAL TO AVOID USING SAME CIRCUIT AS OVERHEAD GENERAL CEILING LIGHTING. SEE CARPENTERS SPECS FOR BACKING INSTRUCTIONS. POSITION OF OUTLET WILL BE SHOWN BY PATTERSON DENTAL REPRESENTATIVE. SEE MANUFACTURERS SPECIFICATIONS.



**LIGHTING PLAN**  
 SCALE: 1/4" = 1'-0"

**NOTE:**  
 SEE EQUIPMENT SUPPLIER PLANS AND DETAILS FOR DENTAL EQUIPMENT ELECTRICAL REQUIREMENTS.

**LIGHTING FIXTURE SCHEDULE**

LABEL	DESCRIPTION	MANUFACTURER PRODUCT #	LAMPS	QTY
F1	2x4 RECESSED FLUORESCENT 3' PARABOLIC ROTTER	LITHONIA LIGHTING 2PM3N 3 32 MVOLT 1/3 GEB 1015	3-18 32W FLUORESCENT 120V	16
F2	SURFACE MOUNTED FLUORESCENT	LEVITON 9860 UHG	1-13W FLUORESCENT 120V	5
F3	COMMERCIAL WALL BRACKET 24" LONG	LITHONIA LIGHTING WC 2 117 MVOLT GEB 1015	2-18 17W FLUORESCENT 120V	5
EM	EMERGENCY EGRESS LIGHT W/ 90 MIN. BATTERY BACKUP	ELFP LIGHTING ELM2	2-5-4W HALOGEN	
EX	WALL MOUNTED LED EXIT SIGN	ELFP LIGHTING XE2 R WE EM	LED	
EX1	WALL MOUNTED LED EXIT SIGN W/ REMOTE HEAD	ELFP LIGHTING XE2 R WE EM RC RHW WP1 6V 7.2W	LED 7.2W REMOTE HEAD	

NOTES:  
 1. CONNECT ALL EMERGENCY / EXIT LIGHT FIXTURES TO NEAREST CONSTANT POWER SOURCE.

**PANEL: PNL-1**  
 LOCATION: EXISTING ELEC. RM.  
 FEEDER SOURCE: MDP

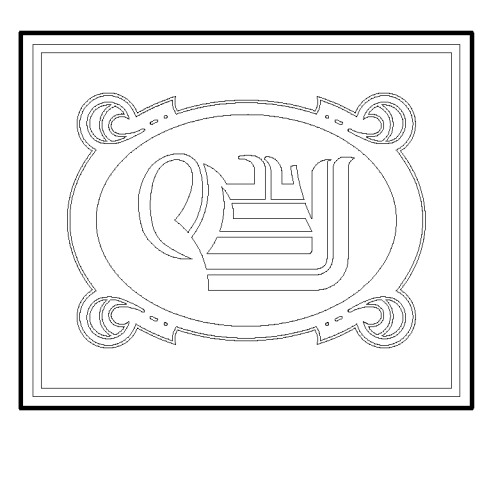
VOLTAGE: 209/1 20V, 225A 3Ø, 4W MLC  
 ENCLOSURE: SURFACE MOUNTED W/ EQUIPMENT GND BAR  
 DOLTON BRK 22000 AIC

CT	NO.	THIN SIZE	LOAD DESCRIPTION	BREAKER	LOAD	AS SHOWN	LOAD	BREAKER	LOAD DESCRIPTION	THIN SIZE	CT
			LOCATION	AMP	VA	Ø	VA	POLE	LOCATION		NO.
1	1	#10	AC #1 COMPRESSOR UNIT 3 TON	30	2450	Ø	2450	3	AHU #1 5 TON 10W ELEC. HEAVY	#10	4
7	7	#10	AC #2 COMPRESSOR UNIT 5 TON	30	2450	Ø	2450	3	AHU #2 5 TON 10W ELEC. HEAVY	#10	6
13	13	#6	ELEC. WATER HEATER 40 GALLON	40	2200	Ø	1560	2	DENTAL SUCCTION UNIT	#10	14
17	17	#10	DENTAL XRAY COMPRESSOR	20	1560	Ø	1560	2	220 V OUTLET 115 Ø 3 RM 104	#12	16
21	21	#12	RECEPTACLES	20	1600	Ø	1600	1	RECEPTACLES	#12	22
23	23	#12	RECEPTACLES	20	1600	Ø	1600	1	DENTAL CHAIR UNIT OUTLET	#12	24
25	25	#12	DENTAL CHAIR UNIT OUTLET	20	1400	Ø	1400	1	DENTAL CHAIR UNIT OUTLET	#12	26
27	27	#12	DENTAL CHAIR UNIT OUTLET	20	1400	Ø	1400	1	DENTAL CHAIR UNIT OUTLET	#12	28
29	29	#12	XRAY RECEPTACLE	20	1300	Ø	1300	1	XRAY RECEPTACLE	#12	30
31	31	#12	COMPUTER OUTLETS	20	1600	Ø	1600	1	RECEPTACLES	#12	32
33	33	#12	RECEPTACLES	20	1600	Ø	1600	1	RECEPTACLES	#12	34
35	35	#12	RECEPTACLES	20	1600	Ø	1600	1	RECEPTACLES	#12	36
37	37	#12	COMPUTER OUTLETS	20	1600	Ø	1600	1	RECEPTACLES	#12	38
39	39	#12	RECEPTACLES	20	1600	Ø	1600	1	RECEPTACLES	#12	40
41	41	#12	SOLID NEUTRAL (NON-NEUTRAL WIRE W/)	20	1000	Ø	1000	1	XRAY RECEPTACLE	#12	42
				TOTAL CONNECTED LOAD (VA)=67200							
				AMP=22400	Ø=22400						
				GROUND BUS (GROUND WIRE Ø)							

**PANEL: PNL-2**  
 LOCATION: EXISTING ELEC. RM.  
 FEEDER SOURCE: MDP

VOLTAGE: 209/1 20V, 225A 3Ø, 4W MLC  
 ENCLOSURE: SURFACE MOUNTED W/ EQUIPMENT GND BAR  
 DOLTON BRK 22000 AIC

CT	NO.	THIN SIZE	LOAD DESCRIPTION	BREAKER	LOAD	AS SHOWN	LOAD	BREAKER	LOAD DESCRIPTION	THIN SIZE	CT
			LOCATION	AMP	VA	Ø	VA	POLE	LOCATION		NO.
1	1	#12	XRAY RECEPTACLE	20	1300	Ø	1600	1	PANORAMIC XRAY CONTROL RECEPTACLE	#12	2
3	3	#12	DEDICATED RECEPTACLE	20	1600	Ø	1600	1	DEDICATED RECEPTACLE	#12	4
5	5	#12	DEDICATED RECEPTACLE	20	1600	Ø	1600	1	DEDICATED RECEPTACLE	#12	5
7	7	#12	DENTAL OPERATING LIGHTS	20	1300	Ø	1300	1	DENTAL OPERATING LIGHTS	#12	8
9	9	#12	GENERAL LIGHTING	20	1600	Ø	1600	1	GENERAL LIGHTING	#12	10
11	11	#12	GENERAL LIGHTING	20	1600	Ø	1600	1	GENERAL LIGHTING	#12	12
13	13	#12	TOILET LIGHTS / VENT COMBO	20	1600	Ø	1600	1	GENERAL LIGHTING / TOILET LST. AND VENT COMBO	#12	14
15	15	#12	SPRINK	20	1600	Ø	1600	1	SPRINK	#12	16
17	17	#12	SPRINK	20	1600	Ø	1600	1	SPRINK	#12	18
19	19	#12	SPRINK	20	1600	Ø	1600	1	SPRINK	#12	20
21	21	-	BLANK	-	-	Ø	-	-	BLANK	-	22
23	23	-	BLANK	-	-	Ø	-	-	BLANK	-	24
25	25	-	BLANK	-	-	Ø	-	-	BLANK	-	26
27	27	-	BLANK	-	-	Ø	-	-	BLANK	-	28
29	29	-	BLANK	-	-	Ø	-	-	BLANK	-	30
31	31	-	BLANK	-	-	Ø	-	-	BLANK	-	32
33	33	-	BLANK	-	-	Ø	-	-	BLANK	-	34
35	35	-	BLANK	-	-	Ø	-	-	BLANK	-	36
37	37	-	BLANK	-	-	Ø	-	-	BLANK	-	38
39	39	-	BLANK	-	-	Ø	-	-	BLANK	-	40
41	41	-	BLANK	-	-	Ø	-	-	BLANK	-	42
				TOTAL CONNECTED LOAD (VA)=67200							
				AMP=22400	Ø=22400						
				GROUND BUS (GROUND WIRE Ø)							



**DAMMON ENGINEERING, INC.**  
 CHIEF ENGINEER  
 EMANUETT DAMMON, P.E.  
 CHIEF ARCHITECT  
 ROBERT WILTISE

554 OLD SPANISH TRAIL  
 SUITE 11, LA 70458  
 OFFICE: 985-649-5632  
 FAX: 985-641-5950

WWW.DAMMONENGINEERING.COM  
 EMAIL: DAMMONENG@Bellsouth.net

ARCHITECTURE  
 ENGINEERING  
 STUDIES  
 PLANNING  
 INVESTIGATION  
 EXPERT WITNESSES

NEW DENTAL OFFICE  
 DR. JONES  
 7240 CROWDER BLVD.  
 SUITE 102  
 NEW ORLEANS, LA

**LIGHTING PLAN**

REV:  
 SCALE: AS NOTED  
 JOB#: 2130  
 DATE: 02-15-12  
 SHEET

OF  
**E-2**