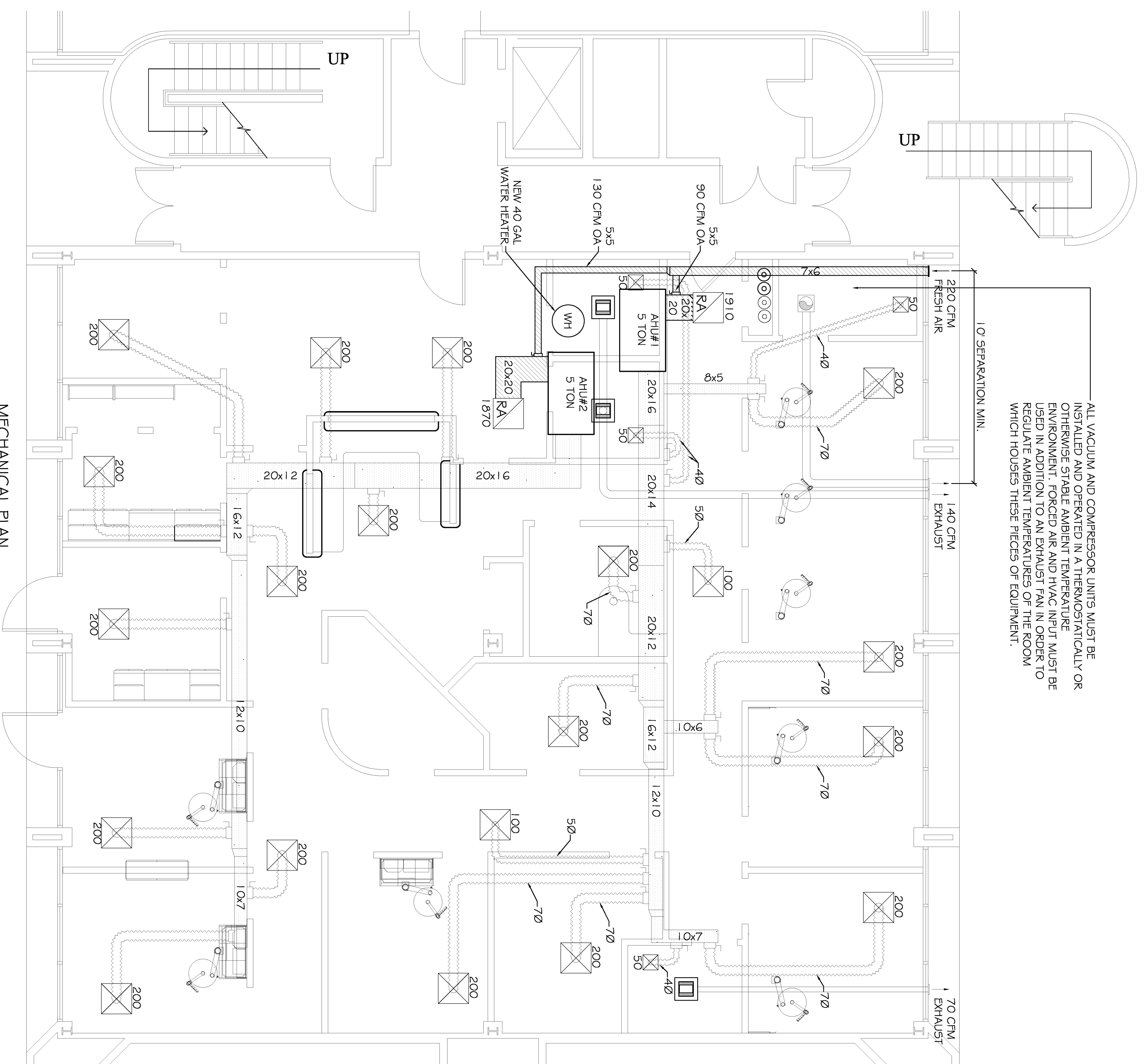


ALL VACUUM AND COMPRESSOR UNITS MUST BE INSTALLED AND OPERATED IN A THERMOSTATICALLY OR OTHERWISE STABLE AMBIENT TEMPERATURE ENVIRONMENT. FORCED AIR AND HVAC INPUT MUST BE USED IN ADDITION TO AN EXHAUST FAN IN ORDER TO REGULATE AMBIENT TEMPERATURES OF THE ROOM WHICH HOUSES THESE PIECES OF EQUIPMENT.



MECHANICAL PLAN

SCALE: 1/4"=1'-0"

**NOTE:**  
SEE EQUIPMENT SUPPLIER PLANS AND DETAILS FOR DENTAL EQUIPMENT MECHANICAL REQUIREMENTS.

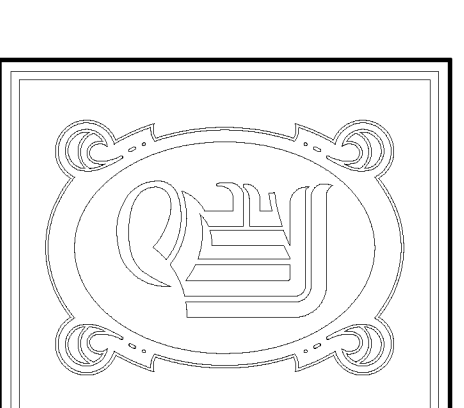
EXHAUST FAN SCHEDULE				
FAN No.	CFM	VOLTAGE	TYPE	MANF.
FF-1	70	120	VENT/LIGHT	

FRESH AIR REQUIREMENTS						
PER IMC 2009 TABLE 403.3						
OCCUPANCY CATEGORY	SF	OCC/1000 SF	CFM/1000 SF	CFM	SF	OA
AHU #1						
OFFICE	793	5	5	0.06	67	
CORRIDOR	320	0	0	0.06	20	
				TOTAL	87	
AHU #2						
OFFICE	661	5	5	0.06	56	
CORRIDOR	305	0	0	0.06	15	
RECEPTION	245	30	5	0.06	52	
				TOTAL	126	
				GRAND TOTAL	213	

AC UNIT SCHEDULE TOTAL HVAC TONS = 10								
NO.	TOTAL BTU	CFM	O.A.	HEAT ELEC.	VOLTAGE	ELECTRICAL MCA	CKT BRKR	COMMENTS
1	60,000	2,000	87	10 KW	208V, 3Ø	-		PNL1
2	60,000	2,000	126	10 KW	208V, 3Ø	-		PNL1

**LEGEND**

- ☒ - INDICATES NEW CEILING DIFFUSER - CFM AS NOTED - 24x24 UNLESS OTHERWISE NOTED. SIZE INDICATES NECK SIZE
- ☒ - INDICATES NEW RETURN AIR CEILING GRILLE OF SIZE INDICATED. TRANSFER DUCT TO BE RECTANGULAR AS INDICATED.
- ☒ - VENT / LIGHT COMBINATION
- ⊖ - THERMOSTAT
- ▬ - INDICATES NEW SHEET METAL DUCTWORK FOR SUPPLY AIR. SIZES INDICATED ARE SHEET METAL DIMENSIONS
- ▬ - INDICATES NEW SHEET METAL DUCTWORK FOR RETURN AIR. SIZES INDICATED ARE SHEET METAL DIMENSIONS
- - ROUND FLEX DUCT. MAX. LENGTH 12'-0". MIN. R-6. PROVIDE MAN. DAMPER AT DIFFUSER CONNECTIONS. SIZE AS INDICATED
- ⊖ - AC UNIT



**DAMMON ENGINEERING, INC.**  
 CHIEF ENGINEER  
 EMMETT DAMMON, P.E.  
 CHIEF ARCHITECT  
 ROBERT WILTSE

554 OLD SPANISH TRAIL  
 SLIDELL, LA, 70458  
 OFFICE: 985-649-5632  
 FAX: 985-641-5950

WEBSITE:  
 WWW.DAMMONENGINEERING.COM  
 EMAIL:  
 DAMMONENG@BELL.SOUTH.NET

ARCHITECTURE  
 ENGINEERING  
 STUDIES  
 PLANNING  
 INVESTIGATION  
 EXPERT WITNESS

NEW DENTAL  
 OFFICE

DR. JONES  
 7240 CROWDER BLVD.  
 SUITE 102  
 NEW ORLEANS, LA

MECHANICAL  
 PLAN

REV:

SCALE: AS NOTED

JOB#: 2130

DATE: 02-15-12

SHEET

M-1

OF