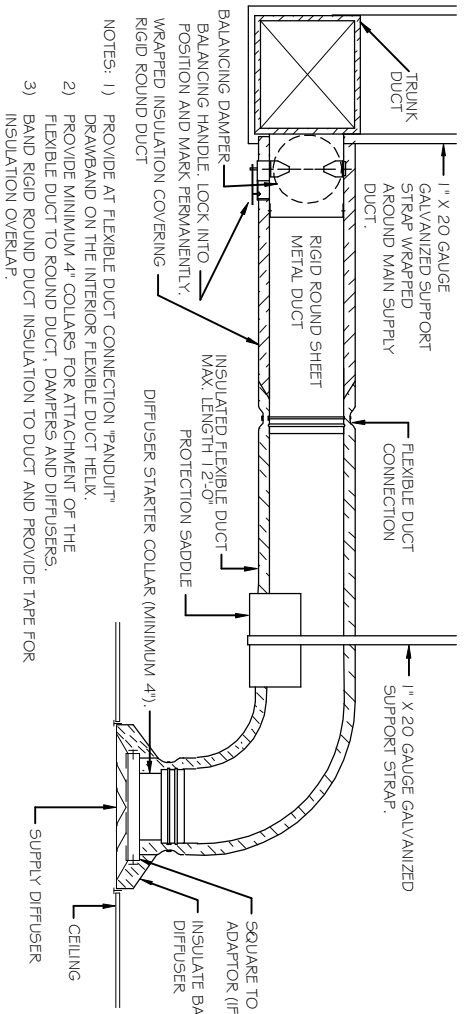
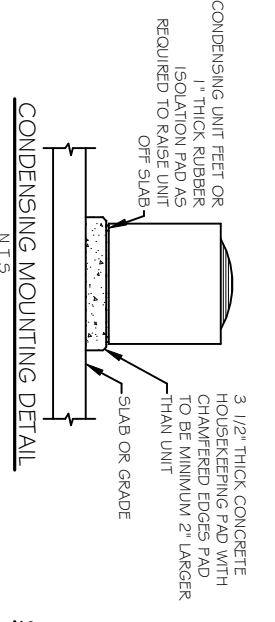


MECHANICAL PLAN  
SCALE: 1/4" = 1'-0"

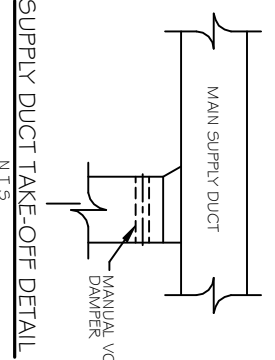
ZONE KEY PLAN  
SCALE: N.T.S.



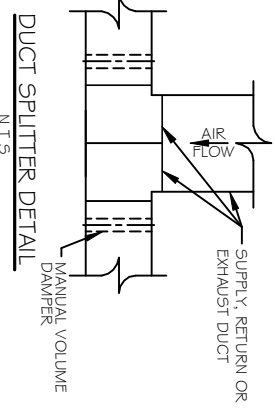
DIFFUSER CONNECTION DETAIL-FLEX DUCT  
N.T.S.



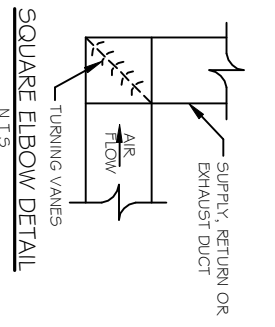
CONDENSING UNIT MOUNTING DETAIL  
N.T.S.



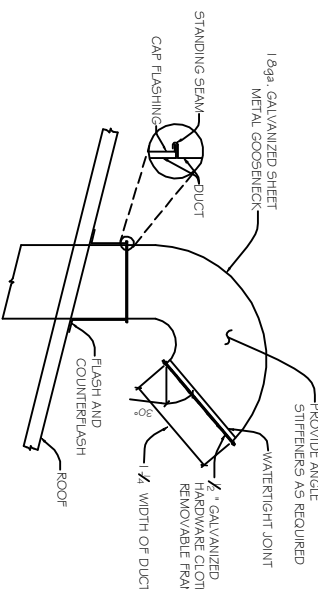
SUPPLY DUCT TAKE-OFF DETAIL  
N.T.S.



DUCT SPLITTER DETAIL  
N.T.S.



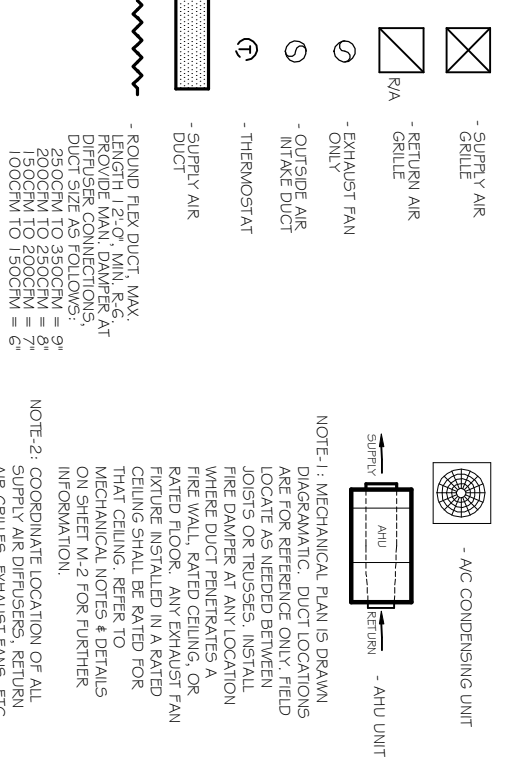
SQUARE ELBOW DETAIL  
N.T.S.



TYPICAL HORIZONTAL AHU DETAIL  
N.T.S.

OUTSIDE AIR INTAKE ROOF PENETRATION DETAIL  
SCALE: N.T.S.

LEGEND



HVAC NOTES

1. CONCEALED DUCTWORK TO BE GALVANIZED SHEET METAL LINED WITH FIBROUS GLASS DUCT LINER. 1" THICK, MIN R-6, INSTALLED PER SMACNA STANDARDS.
2. EXPOSED DUCTWORK TO BE GALVANIZED SHEET METAL LINED WITH FIBROUS GLASS DUCT LINER. 1" THICK, MIN R-6, INSTALLED PER SMACNA STANDARDS.
3. ROUND FLEXIBLE DUCT TO BE UL-181, CLASS 1, AIR DUCT MATERIALS.
4. DUCT SIZES SHOWN ARE CLEAR INSIDE DIMENSIONS.
5. IN ALL SYSTEMS OVER 2000 CFM AND LESS THAN 15,000 CFM, SMOKE DETECTORS SHALL BE INSTALLED IN ACCORDANCE WITH NFPA 72E IN THE RETURN DUCT DOWNSTREAM OF THE AIR HANDLING UNIT AND ALL FILTERS TO AUTOMATICALLY STOP THE FAN.
6. PROVIDE U.L. LISTED 125°F FIRESTAT IN RETURN AIR OF EACH SYSTEM UNDER 2000 CFM TO SHUT DOWN THE FAN IN THE EVENT OF FIRE.
7. PROVIDE U.L. RATED FIRE DAMPERS WHERE REQUIRED AT ALL DUCT PENETRATIONS OF FIRE RATED ASSEMBLIES AND WHERE REQUIRED BY CODE, INCLUDING OUTSIDE AIR INTAKES, CONDENSATE DRAINS TO BE PVC PIPE RUN TO FLOWERS P-TRAP WITH FIVE FEET OF AIR HANDLING UNITS.
8. ALL AIR HANDLING SYSTEMS TO BE BALANCED TO ASSURE PROPER AIR FLOWS PER PLANS.
9. ALL THERMOSTATS TO BE AUTOMATIC CHANGEOVER WITH HEAT SWITCH.
10. EXHAUST FAN EQUAL TO BROAN MODEL NO. 100 CF OR EQUAL. FAN SHALL BE CONTROLLED BY A SWITCH ON THE WALL IN THE SAME LOCATION AS LIGHT SWITCHES).
11. PROVIDE BACK DRAFT DAMPER.
12. PROVIDE AND INSTALL WATER PROOF GRILLE VENT IN PROPER ROOF LOCATION FOR PLUMBING FIXTURE EXHAUST.
13. ALL SUPPLY AIR VENTS SHALL BE EQUIPPED WITH AIR CONTROL DAMPERS.
14. LOCATE OUTDOOR UNITS AS SHOWN ON ARCH. DWGS.
15. REFRIGERANT LINES SHALL BE SIZED BY UNIT MANUFACTURER AND INSTALLED ACCORDING TO MANUFACTURERS' INSTRUCTIONS.
16. FRESH AIR SHALL BE SUPPLIED TO EACH AIR HANDLER THROUGH EXTERIOR WALL DUCT SUPPLIED WITH A CONTROL DAMPER.
17. INSTALL FIRE DAMPER WHERE S.A. & R.A. DUCTS PENETRATE 1 HOUR RATED CEILING.
18. ALL ELECTRICAL, MECHANICAL, AND PLUMBING PENETRATING FIRE WALLS SHALL BE FIRE CALKED. (PENETRATIONS THROUGH RATED CONSTRUCTION SHALL BE SEALED WITH A MATERIAL CAPABLE OF PREVENTING THE PASSAGE OF FLAME/SAFETY HOT GASES WHEN TESTED IN ACCORDANCE WITH ASTM-E814).
19. ALL MECHANICAL SYMBOLS ARE DRAWN DIAGRAMMATICALLY. CONTRACTOR TO VERIFY WITH OWNER LOCATIONS OF VENTS, DAMPERS, REGISTERS, ETC.
20. FLEXIBLE DUCTWORK LENGTH NOT TO EXCEED 12'-0".
21. REFER TO REFLECTED CEILING PLAN FOR FINAL GRILLE AND DIFFUSER LOCATIONS AND COORDINATE AS REQUIRED.
22. FINAL LOCATION OF TEMPERATURE CONTROLS TO BE COORDINATED WITH OWNER AT JOB SITE.
23. PROVIDE AND INSTALL SMOKE DETECTORS AS APPROVED BY LOCAL AHJ'S. PLACE NEAR R/A AND S/A OPENINGS OF AHU AND PROVIDE, WITH ACCESS PANEL, WIRING BY ELECTRICAL CONTRACTOR.
24. FRESH AIR INTAKES ARE REQUIRED TO HAVE MOTORIZED OR GRAVITY DAMPERS TO SHUT OFF WHEN SYSTEM IS NOT RUNNING. ALL THERMOSTATS MUST BE PROGRAMMABLE. SEE SECTIONS 502.4.4 OR 503.2.4.3 OF THE 2006 INTERNATIONAL ENERGY CODE.

AC UNIT SCHEDULE

ZONE/AC #	TOTAL BTU	VOLTAGE	WVA	CKT BRKES	COMMENTS
1	50,000 BTU (5 TON)	240V, 3Ø	35	P1-1,3,5	NOTE: ALL AC TO BE SPLIT-SYSTEM HVAC (TRANE OR EQUAL)
2	50,000 BTU (5 TON)	240V, 3Ø	35	P1-7,9,11	NOTE: ALL AC TO BE SPLIT-SYSTEM HVAC (TRANE OR EQUAL)

AHU UNIT SCHEDULE

ZONE/AC #	TOTAL BTU	CFM	O.A. (KW)	ELECTRICAL	COMMENTS
1	50,000 BTU (5 TON)	2,000	31	10.8	NOTE: ALL AC TO BE SPLIT-SYSTEM HVAC (TRANE OR EQUAL)
2	50,000 BTU (5 TON)	2,000	31	10.8	NOTE: ALL AC TO BE SPLIT-SYSTEM HVAC (TRANE OR EQUAL)

EXHAUST FAN SCHEDULE

LOCATION	CFM	VOLTAGE	TYPE	MANUFACTURER
EXHAUST	110	120	VENT	BROAN OR EQUAL
TOILETS	110	120	VENT	BROAN OR EQUAL
EXH-4	50	120	VENT	BROAN OR EQUAL

REVISIONS

#	DESCRIPTION	DATE

OFFICE RENOVATION FOR DR. KRISTI SOILEAU, DDS, MD  
PERIODONTAL COSMETIC AND REGENERATIVE SURGERY  
3634 COLISEUM  
NEW ORLEANS, LOUISIANA

JOB No: 2188 DATE: 11-14-2013  
DRAWN BY: JTL CHECKED BY: CKD

Architects & Engineers

CHIEF ARCHITECT: KEVIN KINCHEN  
554 OLD SPANISH TRAIL  
SLIDE, LA 70458

dammonengineering.com  
dammoneng@bellsouth.net  
PHONE: 985-649-5832  
FAX: 985-641-5950

MECHANICAL PLAN

SHEET No: 12 OF 15

M-1