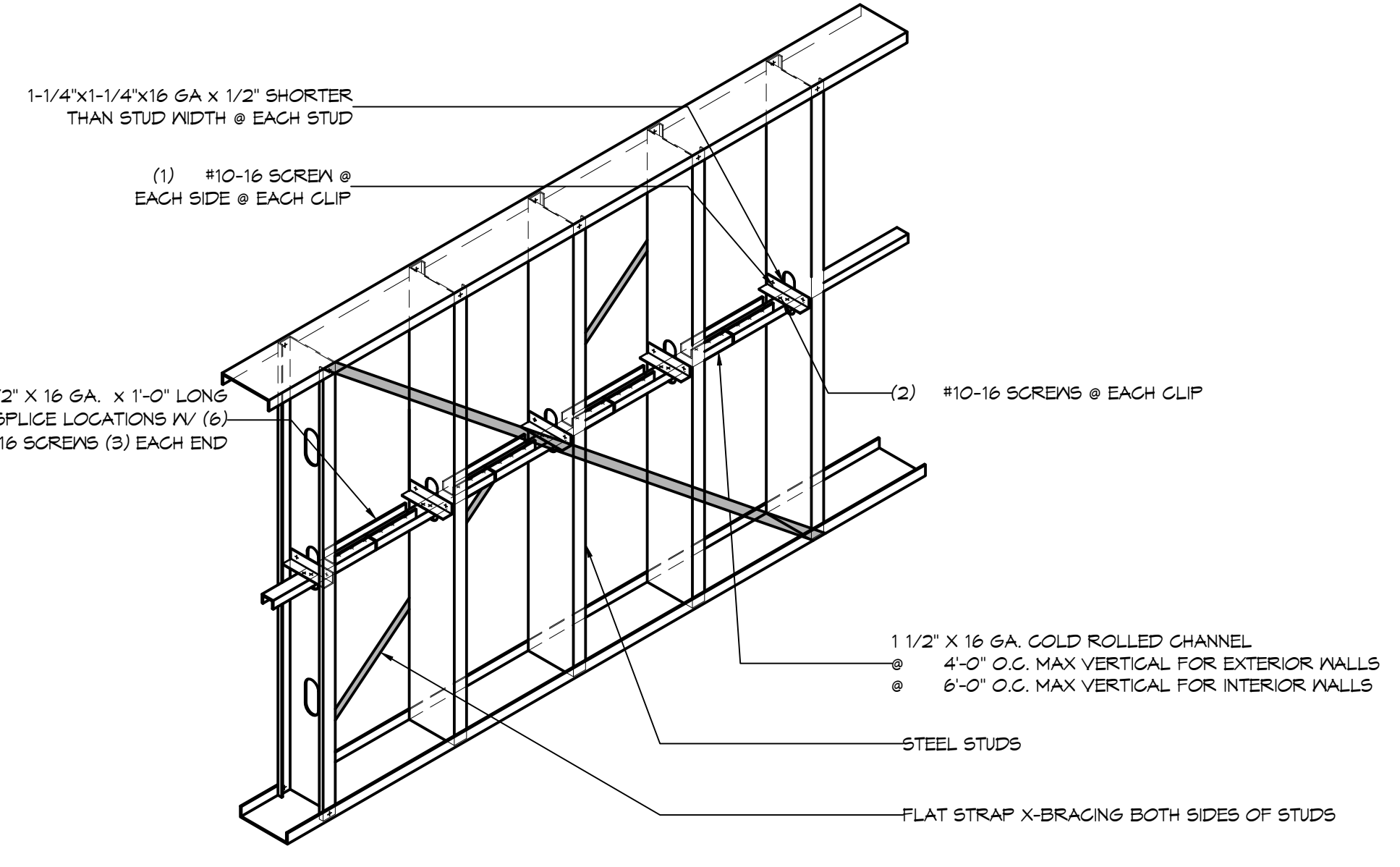


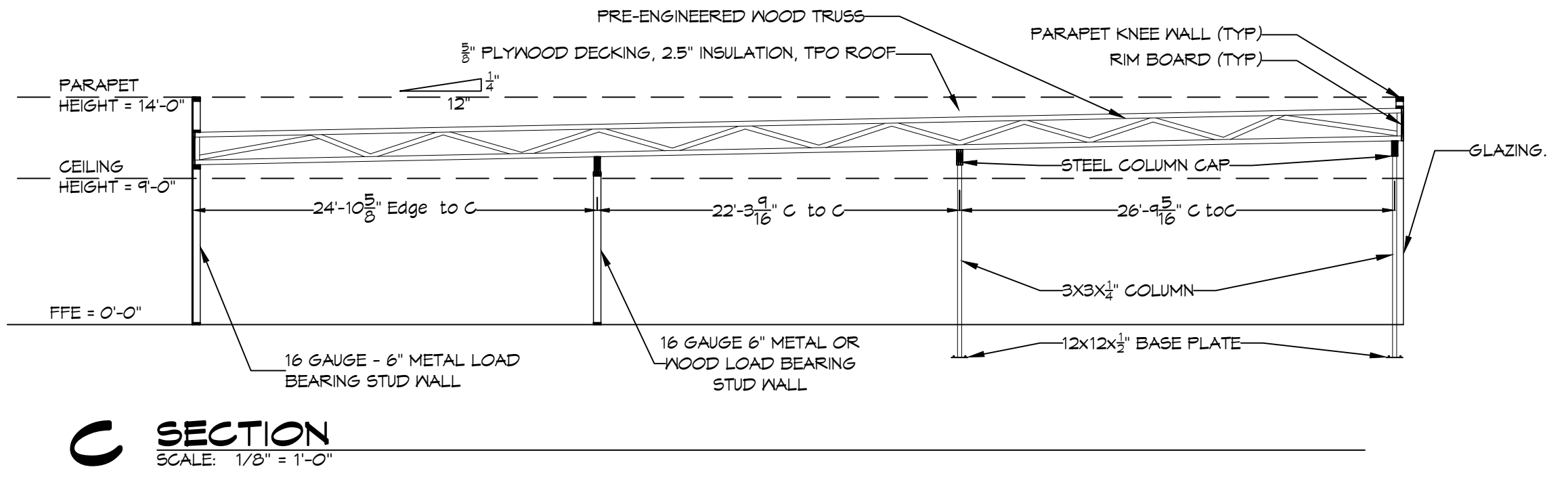
COLD-FORMED STEEL FRAMING NOTES:

- THIS COLD-FORMED STEEL BUILDING SHALL BE CONSTRUCTED TO WITHSTAND 131 MPH WINDS, ROUGHNESS B, EXPOSURE B WITH HORIZONTAL WIND PRESSURES AT 34.1 PSF AND VERTICAL WIND PRESSURES AT 20.7 PSF.
- SHOP DRAWINGS MUST BE CHECKED BY THE FABRICATOR AND BEAR CHECKER'S INITIALS AND APPROVED BY THE GENERAL CONTRACTOR BEFORE BEING SUBMITTED FOR REVIEW. REVIEW OF SHOP DRAWINGS IS LIMITED TO CHECKING FOR CONFORMANCE WITH DESIGN DRAWINGS, STRENGTH OF DIMENSIONAL MEMBERS, ERRORS AND OMISSIONS IN SHOP DRAWINGS.
- THE FOLLOWING DEFLECTIONS SHALL APPLY:
 - EXTERIOR LOAD-BEARING WALL FRAMING: HORIZONTAL DEFLECTION OF 1/240 OF THE WALL HEIGHT.
 - INTERIOR LOAD-BEARING WALL FRAMING: HORIZONTAL DEFLECTION OF 1/240 OF THE WALL HEIGHT UNDER A HORIZONTAL LOAD OF 5 LBF/SQ. FT.
 - EXTERIOR NON-LOAD-BEARING FRAMING: HORIZONTAL DEFLECTION OF 1/240 OF THE WALL HEIGHT.
 - ROOF RAFTER FRAMING: HORIZONTAL DEFLECTION OF 1/240 OF THE HORIZONTALLY PROJECTED SPAN.
 - CEILING JOIST FRAMING: VERTICAL DEFLECTION OF 1/240 OF THE SPAN.
- FRAMING SYSTEMS SHALL PROVIDE FOR MOVEMENT OF FRAMING MEMBERS WITHOUT DAMAGE OR OVERSTRESSING; SHEATHING FAILURE, CONNECTION FAILURE, UNDUE STRAIN ON FASTENERS AND ANCHORS, OR OTHER DETRIMENTAL EFFECTS WHEN SUBJECT TO A MAXIMUM AMBIENT TEMPERATURE CHANGE OF 120 DEG. F.
- FRAMING SYSTEM SHALL MAINTAIN CLEARANCES AT OPENINGS, TO ALLOW FOR CONSTRUCTION TOLERANCES, AND TO ACCOMMODATE LIVE LOAD DEFLECTION OF PRIMARY BUILDING STRUCTURE FOR UPWARD AND DOWNWARD MOVEMENT OF 1/2 INCH.
- COLD-FORMED STEEL FRAMING - GENERAL: DESIGN ACCORDING TO AISI'S "STANDARD FOR COLD-FORMED STEEL FRAMING - GENERAL PROVISIONS."
 - HEADERS: DESIGN ACCORDING TO AISI'S "STANDARD FOR COLD-FORMED STEEL FRAMING - HEADER DESIGN."
 - DESIGN EXTERIOR NON-LOAD-BEARING WALL FRAMING TO ACCOMMODATE HORIZONTAL DEFLECTION WITHOUT REGARD FOR CONTRIBUTION OF SHEATHING MATERIALS.
 - ROOF TRUSSES: DESIGN ACCORDING TO AISI'S "STANDARD FOR COLD-FORMED STEEL FRAMING - TRUSS DESIGN."
- LOAD-BEARING WALL FRAMING
 - STEEL STUDS: MANUFACTURER'S STANDARD C-SHAPED STEEL STUDS, OF WEB DEPTHS INDICATED, PUNCHED, WITH STIFFENED FLANGES.
 - STEEL TRACK: MANUFACTURER'S STANDARD U-SHAPED STEEL TRACK, OF WEB DEPTHS INDICATED, UNPUNCHED, WITH STRAIGHT FLANGES.
 - STEEL BOX OR BACK-TO-BACK HEADERS: MANUFACTURER'S STANDARD C-SHAPES USED TO FORM HEADER BEAMS, OF WEB DEPTHS INDICATED, PUNCHED, WITH STIFFENED FLANGES.
 - STEEL DOUBLE-L HEADERS: MANUFACTURER'S STANDARD L-SHAPES USED TO FORM HEADER BEAMS, OF WEB DEPTHS INDICATED.
- ROOF-RAFTER FRAMING
 - STEEL RAFTERS: MANUFACTURER'S STANDARD C-SHAPED STEEL SECTIONS, OF WEB DEPTHS INDICATED, UNPUNCHED, WITH STIFFENED FLANGES.
 - BUILT-UP MEMBERS: BUILT-UP MEMBERS OF MANUFACTURER'S STANDARD C-SHAPED STEEL SECTION, WITH STIFFENED FLANGES, NESTED INTO A U-SHAPED STEEL SECTION JOIST TRACK, WITH UNSTIFFENED FLANGES, UNPUNCHED, OF WEB DEPTHS INDICATED.
- CEILING JOIST FRAMING - STEEL CEILING JOISTS: MANUFACTURER'S STANDARD C-SHAPED STEEL SECTIONS, OF WEB DEPTHS INDICATED, WITH STIFFENED FLANGES.
- ANCHORS, CLIPS, AND FASTENERS
 - STEEL SHAPES AND CLIPS: ASTM A 36/A 36M, ZINC COATED BY HOT-DIP PROCESS ACCORDING TO ASTM A 123/A 123M.
 - ANCHOR BOLTS: ASTM F 1554, GRADE 36, THREADED CARBON-STEEL HEX-HEADED BOLTS, HEADLESS, HOOKED BOLTS AND CARBON-STEEL NUTS; AND FLAT, HARDENED-STEEL WASHERS; ZINC COATED BY HOT-DIP PROCESS ACCORDING TO ASTM A 153/A 153M, CLASS C.
 - EXPANSION ANCHORS: FABRICATED FROM CORROSION-RESISTANT MATERIALS, WITH CAPABILITY TO SUSTAIN, WITHOUT FAILURE, A LOAD EQUAL TO 10 TIMES DESIGN LOAD, AS DETERMINED BY TESTING PER ASTM E 1190 CONDUCTED BY A QUALIFIED INDEPENDENT TESTING AGENCY.
 - POWER-ACTUATED ANCHORS: FASTENER SYSTEM OF TYPE SUITABLE FOR APPLICATION INDICATED, FABRICATED FROM CORROSION-RESISTANT MATERIALS, WITH CAPABILITY TO SUSTAIN, WITHOUT FAILURE, A LOAD EQUAL TO 10 TIMES DESIGN LOAD, AS DETERMINED BY TESTING PER ASTM E 1190 CONDUCTED BY A QUALIFIED INDEPENDENT TESTING AGENCY.
 - MECHANICAL FASTENERS: ASTM C 1513, CORROSION-RESISTANT-COATED, SELF-DRILLING, SELF-TAPPING STEEL DRILL SCREWS. HEAD TYPE: LOW-PROFILE HEAD BENEATH SHEATHING, MANUFACTURER'S STANDARD ELSEWHERE.
- FABRICATE COLD-FORMED METAL FRAMING AND ACCESSORIES PLUMB, SQUARE, AND TRUE TO LINE, AND WITH CONNECTIONS SECURELY FASTENED, ACCORDING TO REFERENCED AISI'S SPECIFICATIONS AND STANDARDS, MANUFACTURER'S WRITTEN INSTRUCTIONS, AND REQUIREMENTS IN THIS SECTION.
 - FABRICATE FRAMING ASSEMBLIES USING JIGS OR TEMPLATES.
 - CUT FRAMING MEMBERS BY SAWING OR SHEARING; DO NOT TORCH CUT.
 - FASTEN COLD-FORMED METAL FRAMING MEMBERS BY WELDING, SCREW FASTENING, CLINCH FASTENING, OR RIVETING AS STANDARD WITH FABRICATOR. WIRE TYING OF FRAMING MEMBERS IS NOT PERMITTED. COMPLY WITH AISI D13 REQUIREMENTS AND PROCEDURES FOR WELDING, APPEARANCE AND QUALITY OF WELDS, AND METHODS USED IN CORRECTING WELDING WORK. LOCATE MECHANICAL FASTENERS AND INSTALL ACCORDING TO SHOP DRAWINGS, WITH SCREW PENETRATING JOINED MEMBERS BY NOT LESS THAN THREE EXPOSED SCREW THREADS.
 - FASTEN OTHER MATERIALS TO COLD-FORMED METAL FRAMING BY WELDING, BOLTING, OR SCREW FASTENING, ACCORDING TO SHOP DRAWINGS.

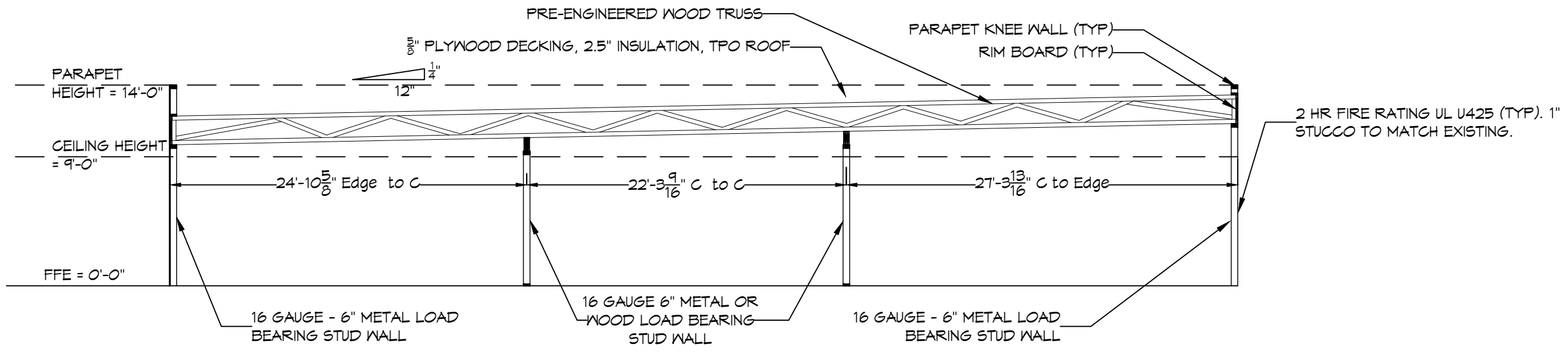


HORZ. BRACING DETAIL
SCALE: N.T.S.

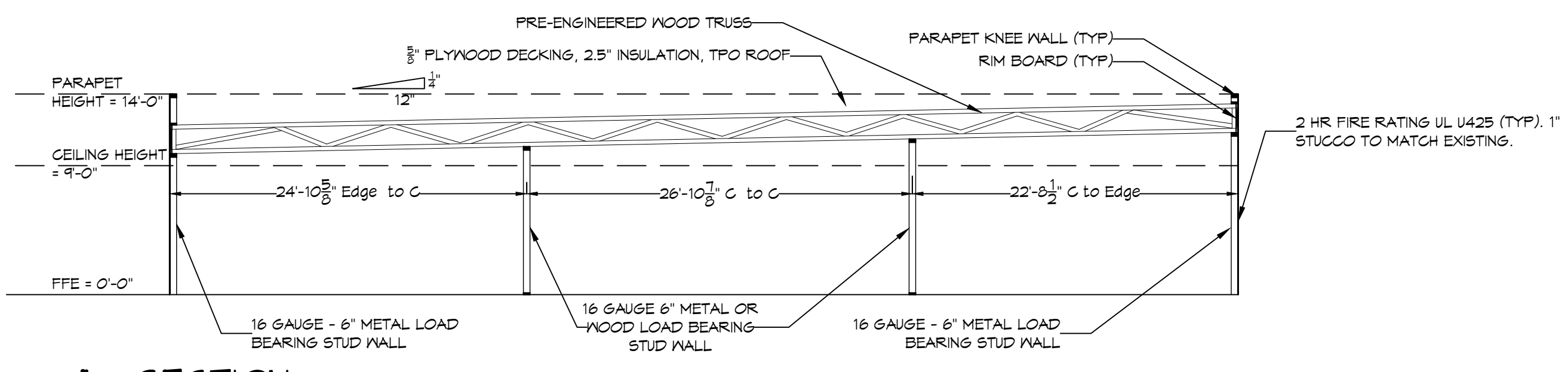
- METAL - STRUCTURAL STEEL
- A. SPECIFICATIONS: DESIGN, FABRICATION, AND ERECTION ARE TO BE GOVERNED BY THE LATEST REVISIONS OF THE FOLLOWING UNLESS NOTED OTHERWISE (U.N.O.):
- AISC SPECIFICATION FOR STRUCTURAL STEEL BUILDINGS (AISC 360-10).
 - AISC CODE OF STANDARD PRACTICE (CONTRACTOR SHALL SUBMIT STEEL SHOP DRAWINGS TO ENGINEER FOR REVIEW PRIOR TO CONSTRUCTION).
 - AISC SPECIFICATIONS FOR STRUCTURAL JOINTS USING ASTM A325 OR A440 BOLTS (ALLOWABLE STRESS DESIGN).
 - STRUCTURAL WELDING CODE, AWS D11 OF THE AMERICAN WELDING SOCIETY. WELDING PERSONNEL AND PROCEDURES ARE TO BE QUALIFIED PER AWS D 1.1.
- B. MATERIALS:
- WIDE FLANGE AND WT SHAPES SHALL BE ASTM A992, FY = 50 KSI, U.N.O.
 - ALL OTHER HOT-ROLLED SHAPES SHALL BE ASTM A36, FY = 36 KSI, U.N.O.
 - STEEL PIPES SHALL BE ASTM A53, TYPE-S (SEAMLESS) GRADE B, U.N.O.
 - HOLLOW STRUCTURAL SECTIONS (HSS) SHALL BE ASTM A500, GRADE B, U.N.O. PLATES AND BARS SHALL BE ASTM A36, U.N.O.
- C. BOLTS
- ALL BOLTS SHALL BE ASTM A325 HIGH STRENGTH WITH HARDENED WASHERS AND HEAVY HEX NUTS U.N.O.
 - ALL BOLT HOLES SHALL BE 1/16" LARGER THAN THE BOLT DIAMETER U.N.O.
 - ALL BOLTS, NUTS, & WASHERS SHALL BE GALVANIZED, U.N.O.
- D. CONNECTIONS:
- ALL CONNECTIONS SHALL BE SHOP WELDED AND FIELD BOLTED U.N.O.
 - MINIMUM NUMBER OF BOLTS FOR ALL CONNECTIONS SHALL BE (4) U.N.O.
 - SPACING OF BOLTS SHALL BE 3 INCHES U.N.O.
 - EDGE DISTANCE OF BOLTS SHALL BE 1-1/2 INCHES U.N.O.
 - ALL CLIP ANGLES SHALL BE MINIMUM L3X3X 1/4 U.N.O.
 - GUSSET PLATE 3/8 (MIN) THICKNESS REQUIRED U.N.O.
- E. WELDS
- ALL WELDS SHALL BE WITH E70XX ELECTRODES IN ACCORDANCE WITH AWS D11. USE HIGHER STRENGTH ELECTRODE IF REQUIRED BY AWS D11 (ALL WELDING SHALL BE PERFORMED BY AWS QUALIFIED WELDERS).
 - MINIMUM SIZE OF FILET WELD SHALL BE 3/16" U.N.O.
 - SEAL WELD AROUND ALL WELDED CONNECTIONS WHERE WELDING IS NOT INDICATED TO PROVIDE WATER-TIGHT CONNECTION.
 - FULL STRENGTH FIELD WELDS IN MATERIALS OVER 5/8 INCH THICK AND WELDED FIELD JOINTS OF IN MEMBERS SHALL BE SUBJECT TO NON-DESTRUCTIVE TESTING BY AN INDEPENDENT LABORATORY.
- F. COATINGS
- ALL UNEXPOSED STEEL SHALL BE SHOP PAINTED (IN ACCORDANCE WITH AISC STANDARDS) OR GALVANIZED.
 - ALL STEEL SHALL BE GALVANIZED OR PAINTED PER PROJECT NOTES.
 - AFTER ERECTION CONTRACTOR SHALL TOUCH UP WITH PAINT, GALVANIZING COMPOUND OR APPROVED COATING ALL ABRADED AREAS.
- G. FIELD QUALITY CONTROL
- INSPECTION OF FIELD ASSEMBLIES IN ACCORDANCE WITH AISC SPECIFICATION FOR STRUCTURAL JOINTS. INSPECTION SHALL INCLUDE APPROVAL OF PROCEDURE FOR CALIBRATION OF WRENCHES AND INSTALLATION OF BOLTS.
 - THE BOLTS SHALL BE CHECKED BY TESTING AGENCY. THE BOLT TENSION SHALL NOT BE LESS THAN THAT REQUIRED BY SPECIFICATIONS FOR STRUCTURAL JOINTS.
- H. MISCELLANEOUS
- METAL ROOFING (IF APPLICABLE) SHALL BE PER OWNER & MEET THE WIND REQUIREMENTS OF THIS DRAWING & GOVERNING BUILDING CODE.
 - SEAL ENDS OF OPEN MEMBERS SUCH AS PIPES AND TUBES WITH 1/8 INCH THICK PLATE & 1/8 INCH SEAL WELDS UNLESS SPECIFICALLY NOTED OTHERWISE.



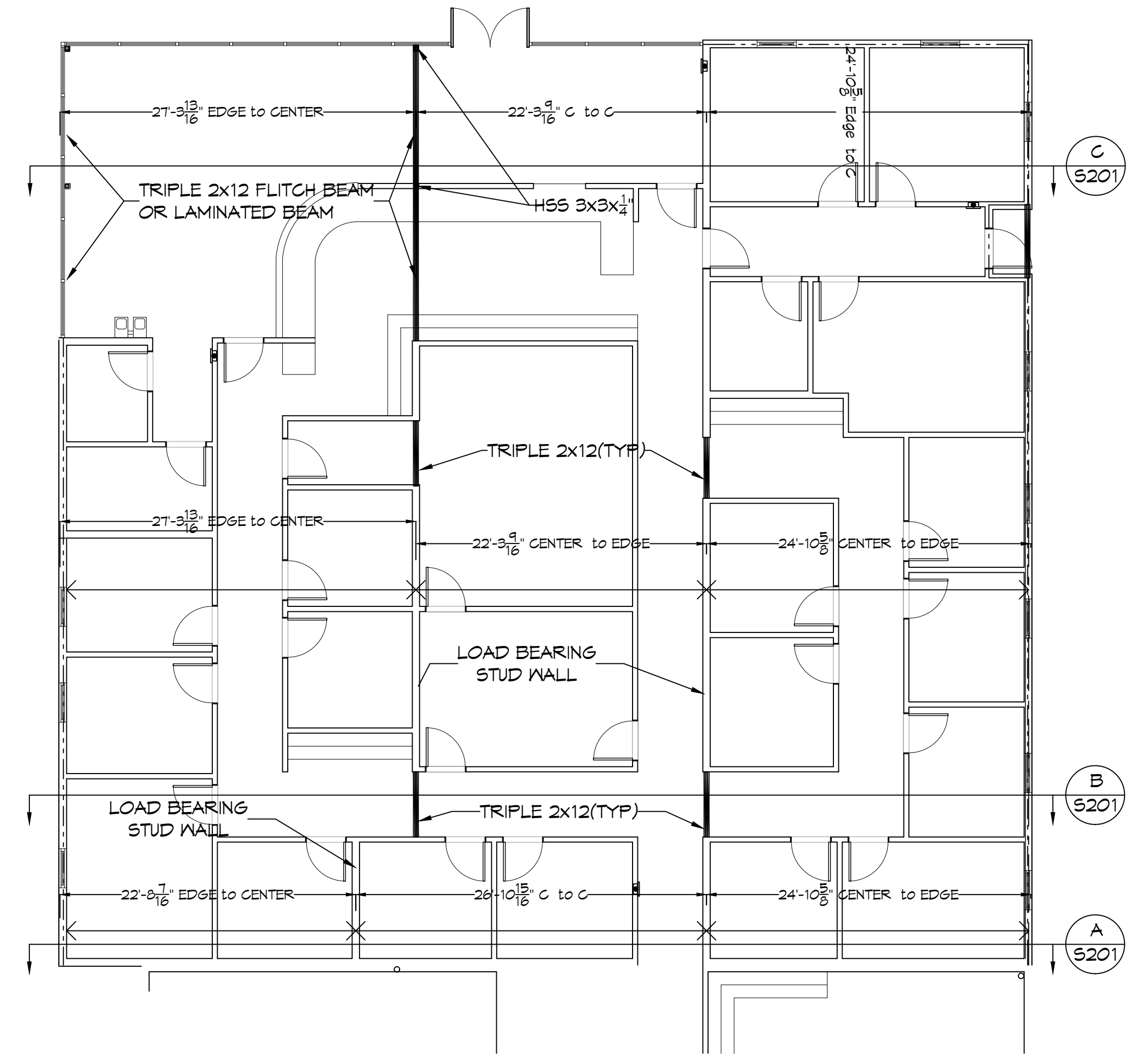
C SECTION
SCALE: 1/8" = 1'-0"



B SECTION
SCALE: 1/8" = 1'-0"



A SECTION
SCALE: 1/8" = 1'-0"



1 STRUCTURAL FRAMING PLAN
SCALE: 1/8" = 1'-0"

DAMMON ENGINEERING, INC.
LOUISIANA & MISSISSIPPI

www.dammonengineering.com
info@dammonengineering.com
PH: 985.649.5832

Chief Engineer: Brian Mierisch, PE
554 Old Spanish Trail
Slidell, LA 70458

#	DESCRIPTION	DATE

SEAL:

BID SET NOT FOR CONSTRUCTION

HONTASNOB

NEW ADDITION

1201 LA HWY 21, SUITE 200
COVINGTON, LA 70433

JOB NO: 2443 DATE: 10-20-2021
DRAWN BY: DFPD CHECKED BY: CAC

SHEET TITLE:
STRUCTURAL FRAMING PLAN

DRAWING NUMBER:
S201

SHEET No: 6 of 16