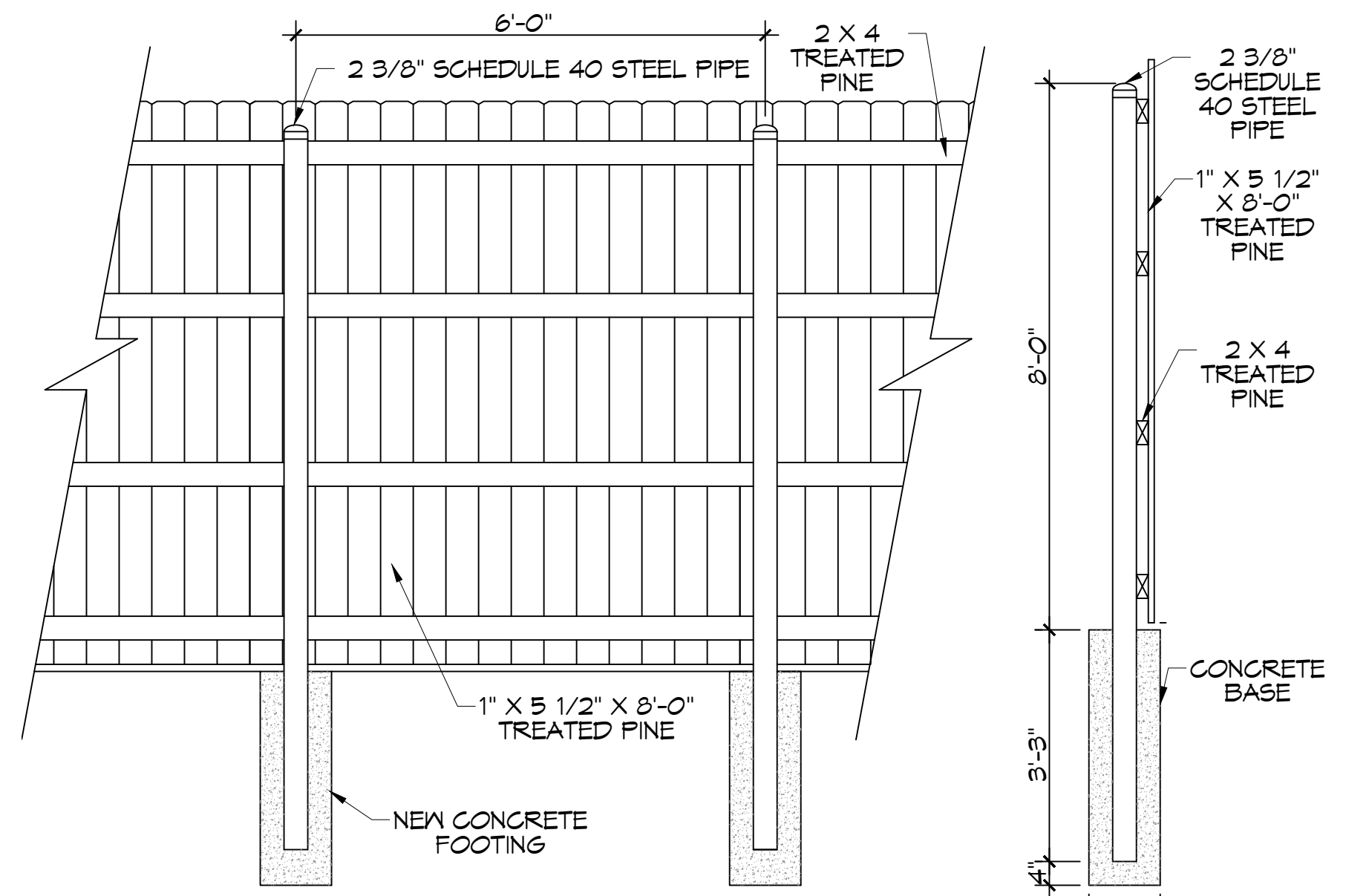
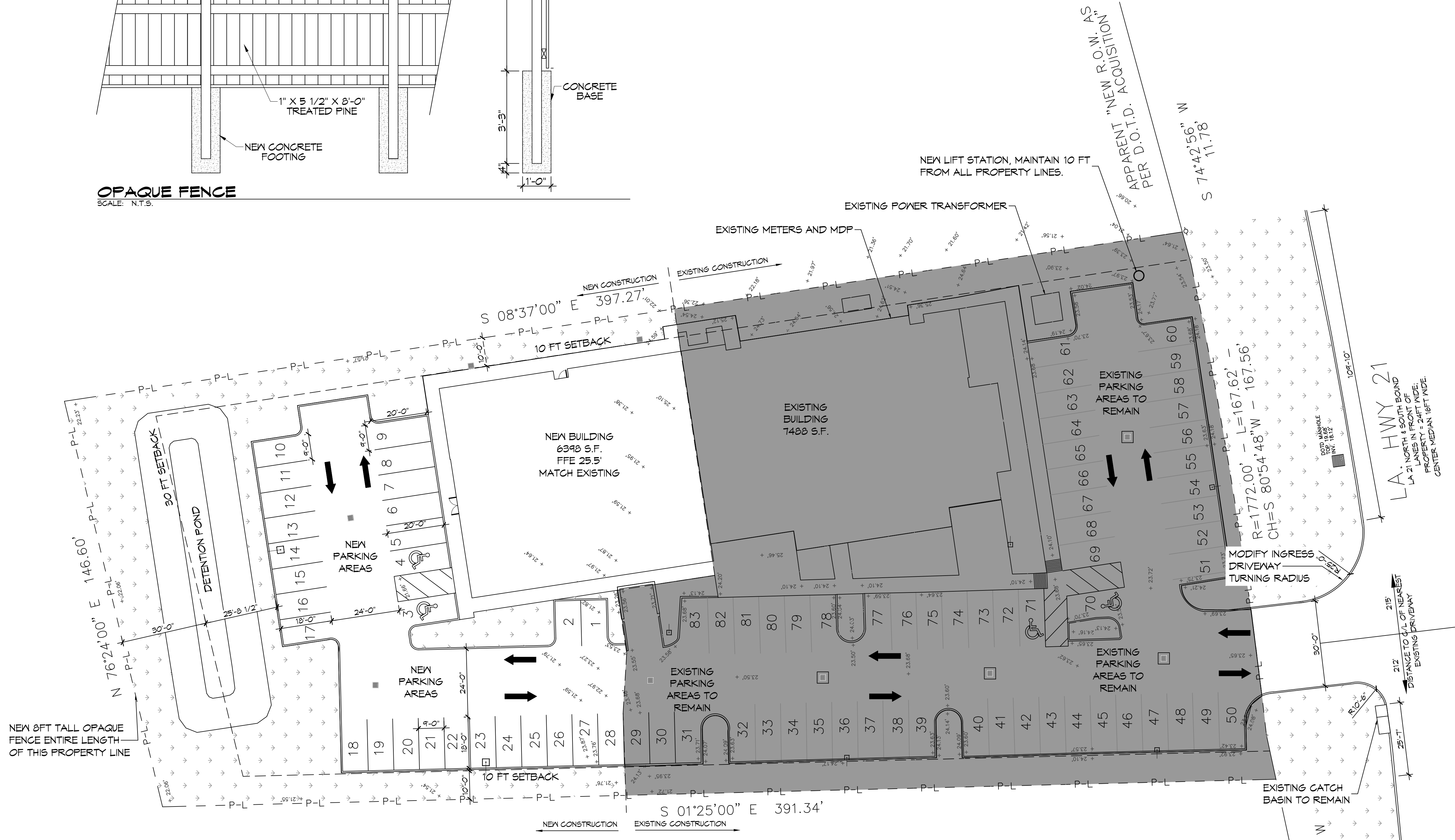


E.C. MOORE, P.E., ARCHITECT - MISSISSIPPI - MISSISSIPPI ARCHITECTS & ENGINEERS, INC. 554 OLD SPANISH TRAIL, SUITE 200, SLIDERS, LA 70458  
 DATE: 04/14/2022, 04:13:27



**OPAQUE FENCE**  
SCALE: N.T.S.



**SITE PLAN**  
SCALE: 1" = 20'

<b>PLANNING</b>
ZONED - HG-2
<b>FLOOD ZONE</b>
ZONE 'X'
<b>BUILDING ELEVATION</b>
BASE FLOOD ELEVATION = N/A FINISHED FLOOR ELEVATION = 25.5'
<b>PARKING CALCS</b>
REQUIRED PARKING FOR MEDICAL OFFICE BUILDING = 5 PER 1,000 S.F. FLOOR AREA AREAS = 7,480 S.F. + 6390 S.F. = 13,870 S.F. 13,870 / 1,000 = 13.87 X 5 = 69 SPACES REQUIRED 69 PROVIDED
<b>SITE LIGHTING</b>
EXTERIOR LIGHTING SHALL BE SHADED OR INWARDLY DIRECTED IN SUCH A MANNER SO THAT NO DIRECT LIGHTING OR GLARE BE CAST BEYOND THE PROPERTY LINE. THE INTENSITY OF SUCH LIGHTING SHALL NOT EXCEED ONE FOOT CANDLE AS MEASURED AT THE ADJUTING PROPERTY LINE.
<b>SITE LEGEND</b>
<ul style="list-style-type: none"> <li> - UTILITY POLE</li> <li> - POLE MOUNTED LIGHT</li> <li> - CATCH BASIN</li> <li> - DIRECTION OF TRAFFIC FLOW</li> <li> - LANDSCAPING</li> <li> - EXISTING ELEVATIONS</li> </ul>
<b>TREE &amp; STUMP REMOVAL NOTES:</b>
<ol style="list-style-type: none"> <li>1. GENERAL CONTRACTOR IS TO HIRE A LICENSED SUB-CONTRACTOR TO REMOVE EXISTING TREES. THIS SUB-CONTRACTOR SHALL FURNISH ALL LABOR, SUPERVISION, SUPPLIES, TOOLS, EQUIPMENT AND OTHER MEANS NECESSARY FOR PERFORMING AND COMPLETING THE WORK.</li> <li>2. IT IS THE CONTRACTOR'S RESPONSIBILITY TO CONTACT LOUISIANA ONE CALL TO ENSURE THERE ARE NO UTILITIES IN THE AREA(S) WHERE TREES ARE TO BE REMOVED.</li> <li>3. CONTRACTOR SHALL PROTECT ANY EXISTING FENCE, SIDEWALK, CURB, STREETS, MANHOLE COVERS AND CATCH BASINS NOT SHOWN ON THESE PLANS FOR REMOVAL.</li> <li>4. CONTRACTOR SHALL BE RESPONSIBLE TO REMOVE ALL DEBRIS FROM TREE REMOVAL OPERATIONS WITHIN TWENTY-FOUR (24) HOURS AFTER DEBRIS HAS BEEN PLACED. NO CITY OR PARISH PROPERTY WILL BE DESIGNATED AS LOG STORAGE AREAS. ADDITIONALLY, NO DEBRIS OR LOGS SHALL BE GIVEN TO RESIDENTS. UNDER NO CIRCUMSTANCE SHALL DEBRIS BE LEFT ON THE SIDE OF THE STREET OVER WEEKENDS OR HOLIDAYS.</li> <li>5. CONTRACTOR SHALL REMOVE ALL TREE STUMPS AND BUTTRISS ROOTS TO A POINT THIRTY SIX (36") INCHES BELOW ADJACENT GROUND LEVEL. THE CONTRACTOR SHALL REMOVE ALL SURFACE AND ADJACENT SUBSURFACE ROOTS AS MAY BE NECESSARY TO ELIMINATE "HUMPS" OR MOUNDS IN THE AREA.</li> <li>6. CONTRACTOR SHALL CLEANUP JOB SITE AND REMOVE ALL ASSOCIATED DEBRIS USED IN GRINDING (REMOVAL) OF TREE STUMPS WITHIN TWENTY-FOUR (24) HOURS OF COMPLETION OF GRINDING.</li> <li>7. THE GENERAL CONTRACTOR SHALL BACKFILL THESE HOLES.</li> <li>8. CONTRACTOR SHALL WARRANTY WORK AGAINST SUCKER GROWTH FOR A PERIOD OF ONE (1) YEAR.</li> </ol>

**DAMMON ENGINEERING, INC.**  
 LOUISIANA & MISSISSIPPI  
 Chief Engineer: Brian Mistich, PE  
 554 Old Spanish Trail  
 Slidell, LA 70458  
 www.dammonengineering.com  
 info@dammonengineering.com  
 PH: 985.649.5832

#	DESCRIPTION	DATE



**HONTASMOB**  
 NEW ADDITION  
 11211 LA HWY 21, 70458  
 COVINGTON, LA  
 JOB No: 2443  
 DATE: 05-05-2022  
 DRAWN BY: DFP  
 CHECKED BY: GKD

SHEET TITLE:  
 SITE PLAN  
 DRAWING NUMBER:  
**C101**  
 SHEET No: 3 of 19