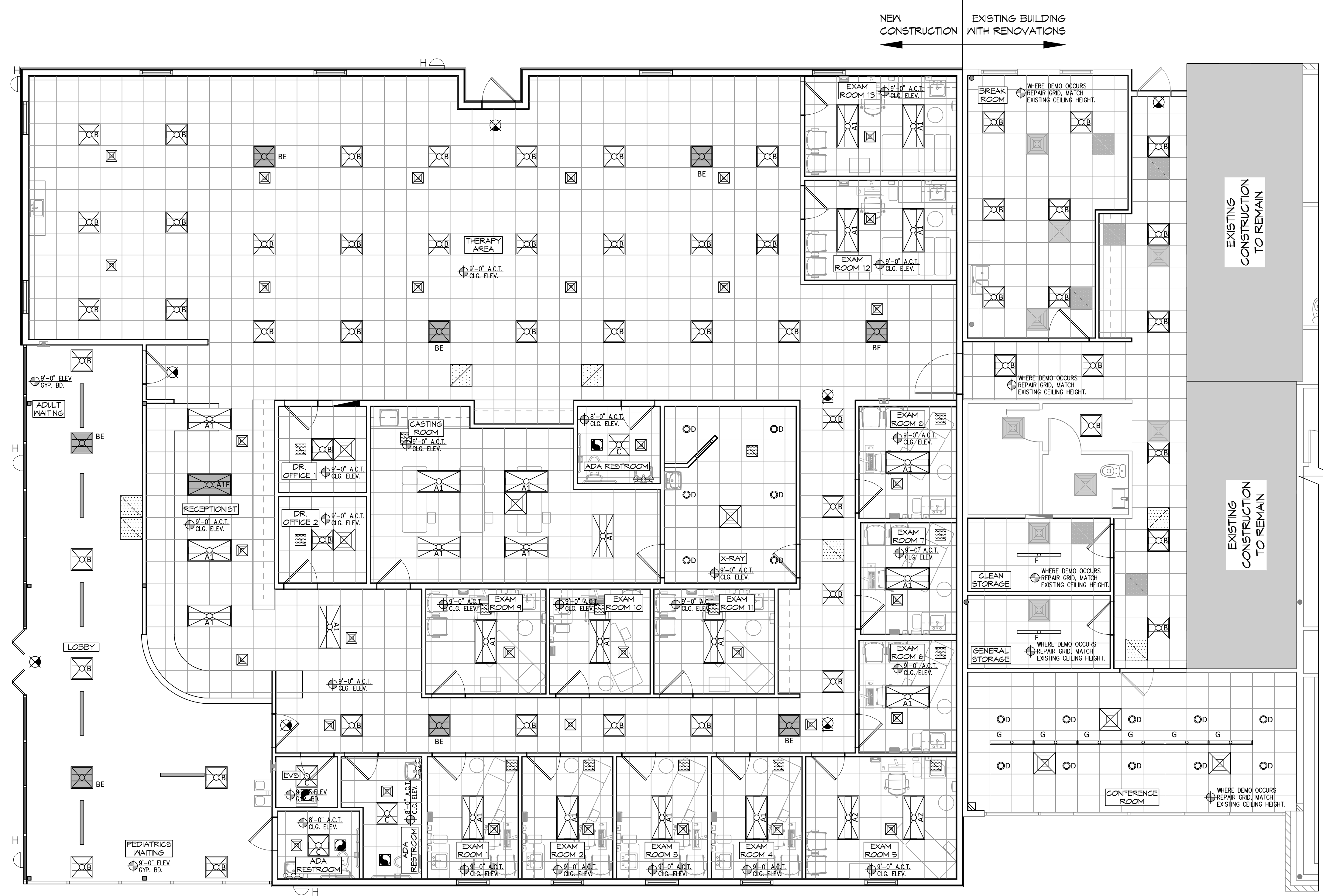


C:\MSDCAD\Projects\2022\220612\220612.dwg - 11/15/2022 10:43 AM - 11/15/2022 10:43 AM - 11/15/2022 10:43 AM

REFLECTED CEILING LEGEND

- | | |
|---|---|
| <ul style="list-style-type: none"> 2x4 COLUMBIA LGAT24-30-ML6-EU 2x4 COLUMBIA LGAT24-30-HL6-EU 2x4 COLUMBIA - EMERGENCY PRESCOLITE LTR-4RD-H-SL19L-DM1-LTR-4RD-T-SL30K9VDS EXTERIOR LIGHT, MATCH EXISTING & CONNECT TO EXISTING CIRCUIT VANITY LIGHT FIXTURE EXHAUST FAN - SEE MECHANICAL NEW SUPPLY AIR GRILLE EXISTING SUPPLY AIR GRILLE GYPSUM BOARD CEILING | <ul style="list-style-type: none"> 2x2 COLUMBIA LGAT22-30ML6-EU 2x2 COLUMBIA LGAT22-L595 (4400LM) 2x2 COLUMBIA - EMERGENCY 48" COLUMBIA MP34-35VM-CN-EDU 48" LITECONTROL 4L-P-D-4-SOF-X-CX-35K-D030 EXIT LIGHT FIXTURE - CEILING MOUNTED NEW RETURN AIR FILTER GRILLE LINEAR SLOT DIFFUSER EXISTING RETURN AIR FILTER GRILLE 2x2 CEILING GRID |
|---|---|



REFLECTED CEILING PLAN
 SCALE: 3/16" = 1'-0"

DAMMON ENGINEERING, INC.
 LOUISIANA & MISSISSIPPI
 Chief Engineer: Brian Misch, PE
 554 Old Spanish Trail
 Slidell, LA 70488
 www.dammonengineering.com
 info@dammonengineering.com
 PH: 985.649.5832

# DESCRIPTION	DATE



NEW ADDITION HONOLULU
 11211 LA HWY 21, 70488
 COVINGTON, LA
 JOB No: 2443
 DATE: 05-06-2022
 DRAWN BY: PDP
 CHECKED BY: CKD

SHEET TITLE:
 REFLECTED CEILING PLAN

DRAWING NUMBER:
A105
 SHEET No: 15 of 19