

DATE: 05/06/2022 11:58 AM PROJECT: 2443 - HONOLULU MOB DRAWN BY: JLD CHECKED BY: JLD

### LIGHTING LEGEND

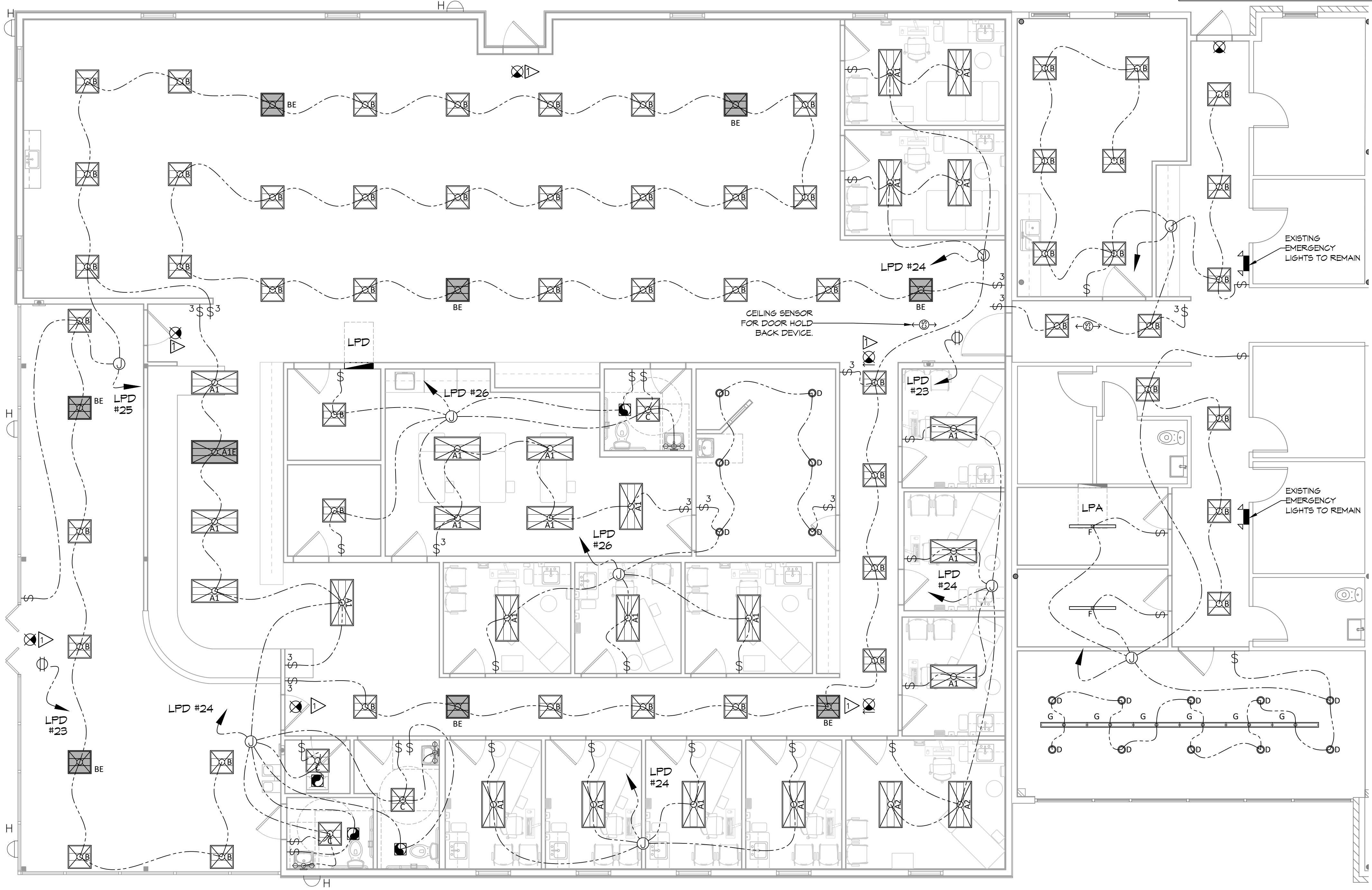
	2x4 COLUMBIA LCAT24-30-MLG-EU (E INDICATES EMERGENCY LIGHT)		2x2 COLUMBIA LCAT22-30-MLG-EU (E INDICATES EMERGENCY LIGHT)
	2x4 COLUMBIA LCAT24-30-HLG-EU		2x2 COLUMBIA LCAT22-L535 (4400LM)
	PRESCOLITE LTR-4RD-H-SL15L-DM1- LTR-4RD-T-SL30K-BVDS		48\"/>
	EXTERIOR LIGHT, MATCH EXISTING AND CONNECT TO EXISTING CIRCUIT		48\"/>
	VANITY LIGHT FIXTURE		EXIT LIGHT FIXTURE - CEILING MOUNTED
	EXHAUST FAN - SEE MECHANICAL		POLE MOUNTED LIGHT; MATCH EXISTING; CONNECT TO EXISTING CIRCUIT
	JUNCTION BOX		EXISTING POWER PANEL (LPA)
	SINGLE POLE LIGHT SWITCH		NEW POWER PANEL (LPD)
	3 WAY LIGHT SWITCH		CEILING SENSOR
	CEILING OUTLET		HOME RUN

- ### GENERAL LIGHTING NOTES
- ALL WORK SHALL COMPLY WITH APPLICABLE NATIONAL, STATE, AND LOCAL CODES, RULES, REGULATIONS, AND REQUIREMENTS OF THE SERVICE UTILITY COMPANY.
  - GENERAL CONTRACTOR SHALL NOTIFY THE ARCHITECT IMMEDIATELY IF ANY CONFLICTS OCCUR BETWEEN LIGHTING AND ANY OTHER TRADE. DO NOT PROCEED WITH INSTALLATION IN THAT AREA UNTIL CONFLICT HAS BEEN RESOLVED TO THE SATISFACTION OF THE ARCHITECT AND ENGINEER.
  - REFER TO ARCHITECTURAL DRAWINGS FOR EXACT LOCATION AND MOUNTING INSTRUCTIONS FOR ALL LIGHT FIXTURES. NOTIFY THE ARCHITECT AND ENGINEER OF ANY DISCREPANCIES BETWEEN THESE PLANS AND THE ARCHITECTURAL PLANS RELATING TO QUANTITY, TYPE AND LOCATION OF DEVICES AND/OR FIXTURES.
  - WHEN SPECIFIC LIGHT FIXTURE HAS BEEN SPECIFIED IN THE FIXTURE SCHEDULE, ELECTRICAL CONTRACTOR SHALL PROVIDE COMPLETE ASSEMBLY INCLUSIVE ALL PARTS AND HARDWARE TO INSURE PROPER FUNCTIONING FIXTURE.
  - ALL CONDUCTORS SHALL BE A MINIMUM OF #12 AWG UNLESS NOTED OTHERWISE.
  - ALL 120V RUNS LONGER THAN 60 FEET SHALL BE #10 AWG AND 277V RUNS LONGER THAN 150 FEET SHALL BE #10 AWG UNLESS NOTED OTHERWISE.
  - ALL CONDUCTORS SHALL BE COPPER.
  - WHERE CONDUCTOR SIZES ARE NOTED ON DRAWINGS, THAT WIRE SIZE SHALL BE THROUGH THE ENTIRE RUN UNLESS OTHERWISE NOTED.
  - MOUNTED LIGHT SWITCHES 48" AFF UNLESS NOTED OTHERWISE ON ARCHITECTURAL DRAWINGS.
  - WHERE MORE THAN ONE SWITCH OCCURS IN THE SAME LOCATION, THEY SHALL BE INSTALLED IN A GANG TYPE BOX UNDER ONE COVER PLATE. ALL GANGED SWITCHES SHALL HAVE A COMMON SEAMLESS FACEPLATE. EACH MULTI-GANGED BOX SHALL BE NO MORE THAN SIX (6) SWITCHES WIDE. WHERE MORE THAN SIX (6) SWITCHES ARE SHOWN AT ONE (1) LOCATION, ADDITIONAL MULTI-GANGED BOXES SHALL BE STACKED VERTICALLY AND THE WIDTH OF THE MULTI-GANGS SHALL BE AS EVEN AS POSSIBLE.
  - EACH DIMMER SWITCH SHALL HAVE A WATTAGE RATING 25% HIGHER THAN THE TOTAL WATTAGE OF ALL LIGHTS TO BE CONTROLLED BY THE DIMMER. DIMMER SIZES 600, 1000, 1500, AND 2000 WATTS. LUTRON NOVA T-STAR. WHERE SWITCHES ARE GANGED WITH DIMMERS, THE SWITCHES SHALL ALSO BE LUTRON NOVA T-STAR. FLUORESCENT AND LOW VOLTAGE DIMMERS SHALL BE LUTRON NOVA T-STAR.
  - ALL EMERGENCY EXIT LIGHT FIXTURES SHALL HAVE 90 MINUTE BATTERY BACKUP WITH INTEGRAL TEST BUTTON AND SHALL BURN CONTINUOUSLY.
  - ALL FLUORESCENT FIXTURES THAT UTILIZE DOUBLE-ENDED LAMPS AND CONTAIN BALLASTS SHALL BE PROVIDED WITH A DISCONNECTING MEANS IN ACCORDANCE WITH NEC 410.136.

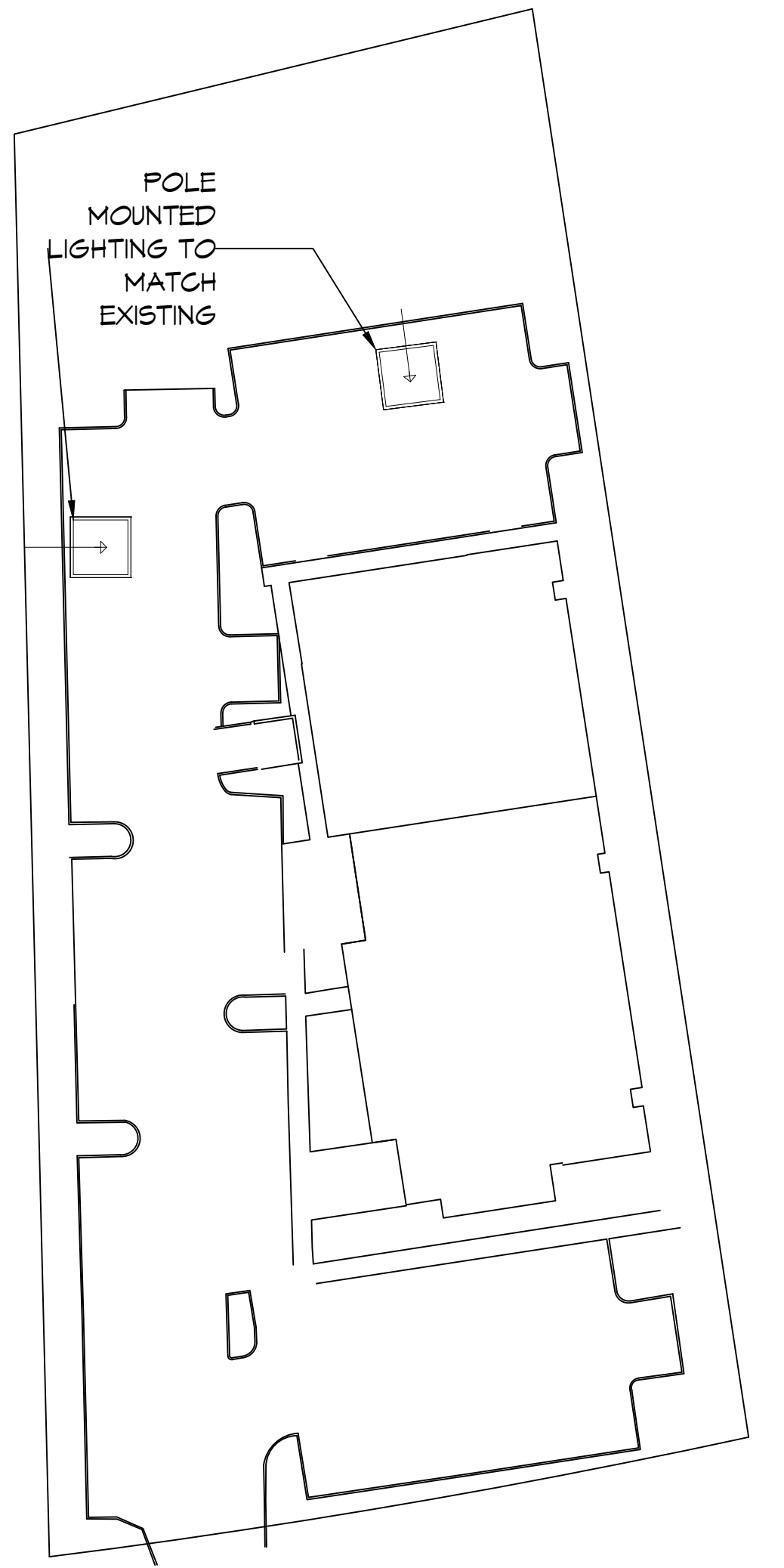
# DAMMON ENGINEERING, INC.

LOUISIANA & MISSISSIPPI

Chief Engineer: Brian Misch, PE  
www.dammonengineering.com  
info@dammonengineering.com  
PH: 985.649.9832



SITE LIGHTING		KEYED NOTES	
EXTERIOR LIGHTING SHALL BE SHADED OR INWARDLY DIRECTED IN SUCH A MANNER SO THAT NO DIRECT LIGHTING OR GLARE BE CAST BEYOND THE PROPERTY LINE. THE INTENSITY OF SUCH LIGHTING SHALL NOT EXCEED ONE FOOT CANDLE AS MEASURED AT THE ABUTTING PROPERTY LINE.		PROVIDE CONNECTION TO UN-SWITCHED HOT LIGHTING CIRCUIT AND SHALL HAVE 90 MINUTE EMERGENCY BATTERY BACKUP.	



REVISIONS	DATE
1	3/9/2022
2	4/9/2022
3	5/12/2022



**27 LIGHTING PLAN**  
SCALE: 3/16"=1'-0"

**POLE MOUNTED SITE LIGHTING**  
SCALE: N.T.S.

NEW ADDITION  
**HONOLULU MOB**

1121 LA HWY 21  
COVINGTON, LA 70453  
JOB No: 2443 DATE: 05-06-2022  
DRAWN BY: JLD CHECKED BY: JLD

SHEET TITLE:  
LIGHTING PLAN

DRAWING NUMBER:

# E102

SHEET No: 15 of 19