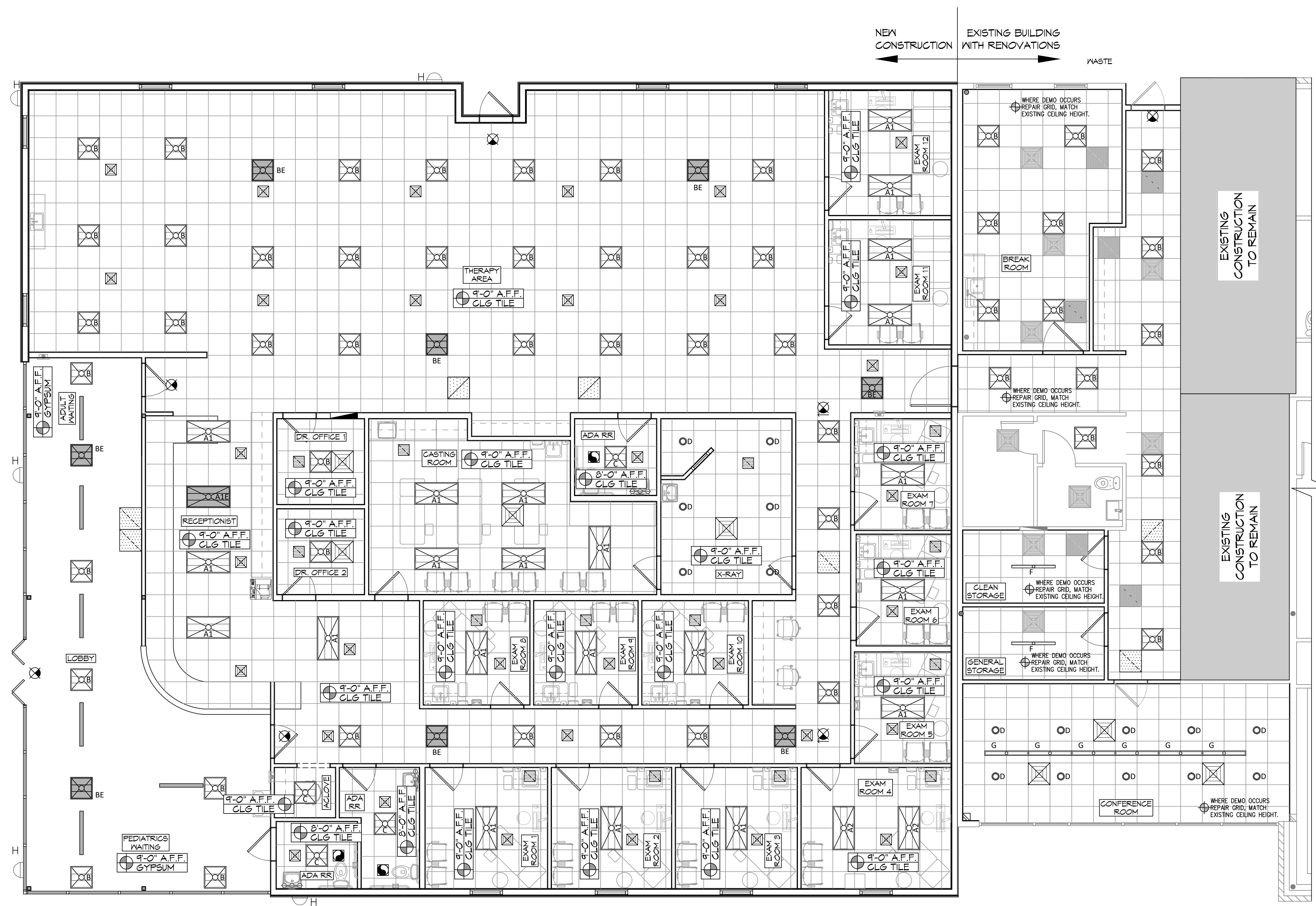


DATE: 06/15/2022, 11:10:37 AM  
 PROJECT: 2443 - HONTSAS MOB - NEW ADDITION  
 DRAWN BY: J. MOORE  
 CHECKED BY: J. MOORE  
 DATE: 06/15/2022

## REFLECTED CEILING LEGEND

	2x4 COLUMBIA LGAT24-30-ML6-EU		2x2 COLUMBIA LGAT22-30ML6-EU
	2x4 COLUMBIA LGAT24-30-HL6-EU		2x2 COLUMBIA LGAT22-L535 (4400LM)
	2x4 COLUMBIA - EMERGENCY		48" COLUMBIA MPS4-35VM-CN-EDU
	PRESCOLITE LTR-4RD-H-SL15L-DM1- LTR-4RD-T-SL30K9VDS		48" LITECONTROL 4L-P-D-4-SOF-X-CX- 35K-D030
	EXTERIOR LIGHT, MATCH EXISTING & CONNECT TO EXISTING CIRCUIT		EXIT LIGHT FIXTURE - CEILING MOUNTED
	VANITY LIGHT FIXTURE		EXHAUST FAN - SEE MECHANICAL
	NEW SUPPLY AIR GRILLE		NEW RETURN AIR FILTER GRILLE
	EXISTING SUPPLY AIR GRILLE		LINEAR SLOT DIFFUSER
	EXISTING RETURN AIR FILTER GRILLE		GYPSUM BOARD CEILING
	2x2 CEILING GRID		



**REFLECTED CEILING PLAN**  
 SCALE: 3/16" = 1'-0"

**DAMMON ENGINEERING, INC.**  
 LOUISIANA & MISSISSIPPI  
 Chief Engineer: Brian Misch, PE  
 554 Old Spanish Trail  
 Slidell, LA 70458  
 www.dammonengineering.com  
 info@dammonengineering.com  
 PH: 985.649.5832

#	DESCRIPTION	DATE



**HONTSAS MOB**  
 NEW ADDITION  
 7121 LA HWY 21  
 COVINGTON, LA 70438  
 JOB No: 2443  
 DATE: 6-15-2022  
 DRAWN BY: JPM  
 CHECKED BY: JPM

SHEET TITLE:  
REFLECTED CEILING PLAN

DRAWING NUMBER:

A105