

LIGHTING LEGEND

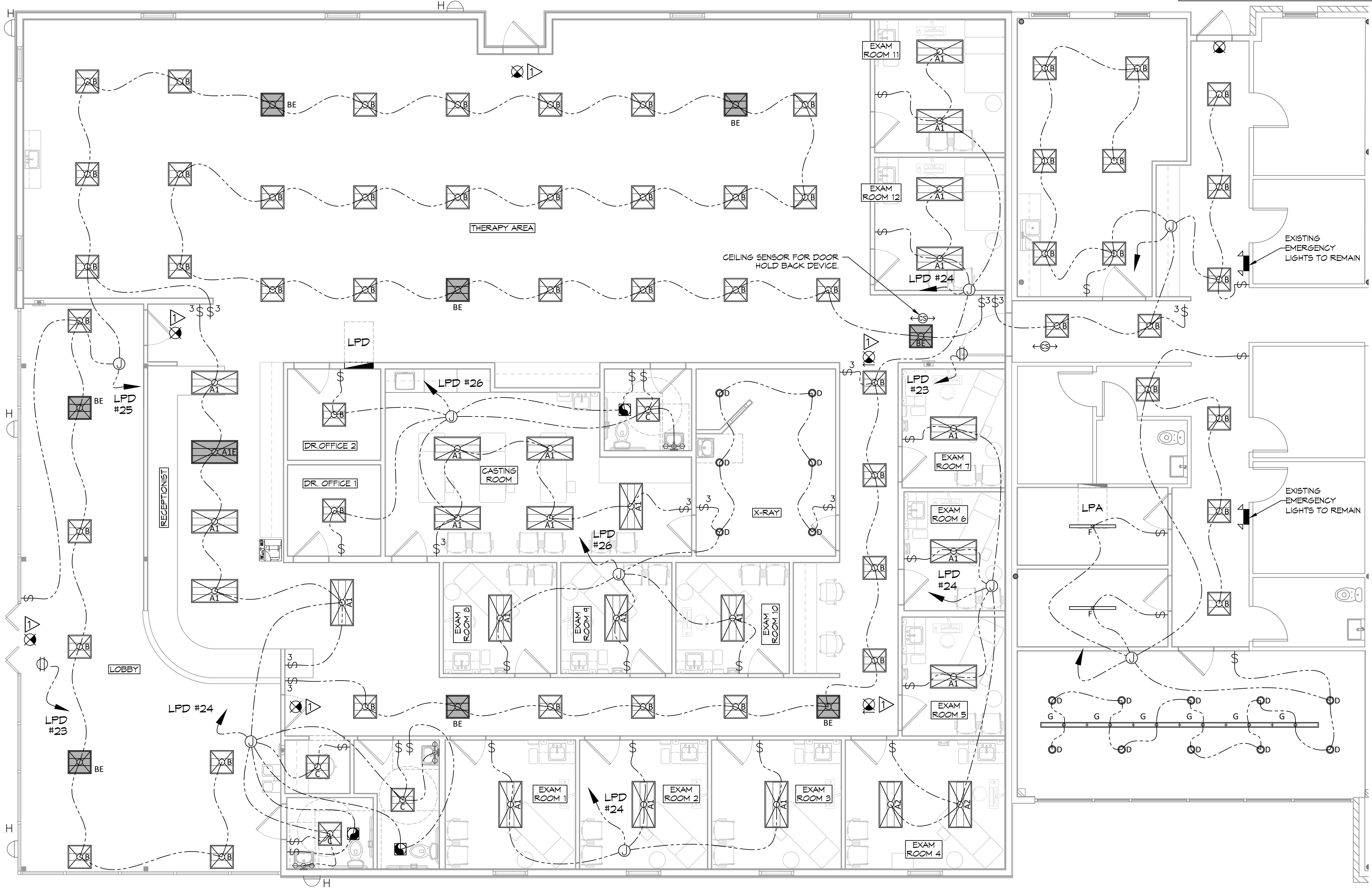
2X4 COLUMBIA LCAT24-30-MLG-EU (E INDICATES EMERGENCY LIGHT)	2X2 COLUMBIA LCAT22-30-MLG-EU (E INDICATES EMERGENCY LIGHT)
2X4 COLUMBIA LCAT24-30-HLG-EU	2X2 COLUMBIA LCAT22-L595 [4400LM]
PRESCOLITE LTR-4RD-H-SL15L-DM1- LTR-4RD-T-SL30K-BVDS	48" COLUMBIA MPS4-35VW-CN-EDU
EXTERIOR LIGHT, MATCH EXISTING AND CONNECT TO EXISTING CIRCUIT	48" LITECONTROL 4L-P-D-4-SOF-X-CX- 35K-D030
VANITY LIGHT FIXTURE	EXIT LIGHT FIXTURE - CEILING MOUNTED
EXHAUST FAN - SEE MECHANICAL	POLE MOUNTED LIGHT; MATCH EXISTING; CONNECT TO EXISTING CIRCUIT
JUNCTION BOX	EXISTING POWER PANEL (LPA)
SINGLE POLE LIGHT SWITCH	NEW POWER PANEL (LPD)
3 WAY LIGHT SWITCH	CEILING SENSOR
CEILING OUTLET	HOME RUN

- ### GENERAL LIGHTING NOTES
- ALL WORK SHALL COMPLY WITH APPLICABLE NATIONAL, STATE, AND LOCAL CODES, RULES, REGULATIONS, AND REQUIREMENTS OF THE SERVICE UTILITY COMPANY.
 - GENERAL CONTRACTOR SHALL NOTIFY THE ARCHITECT IMMEDIATELY IF ANY CONFLICTS OCCUR BETWEEN LIGHTING AND ANY OTHER TRADE. DO NOT PROCEED WITH INSTALLATION IN THAT AREA UNTIL CONFLICT HAS BEEN RESOLVED TO THE SATISFACTION OF THE ARCHITECT AND ENGINEER.
 - REFER TO ARCHITECTURAL DRAWINGS FOR EXACT LOCATION AND MOUNTING INSTRUCTIONS FOR ALL LIGHT FIXTURES. NOTIFY THE ARCHITECT AND ENGINEER OF ANY DISCREPANCIES BETWEEN THESE PLANS AND THE ARCHITECTURAL PLANS RELATING TO QUANTITY, TYPE AND LOCATION OF DEVICES AND/OR FIXTURES.
 - WHEN SPECIFIC LIGHT FIXTURE HAS BEEN SPECIFIED IN THE FIXTURE SCHEDULE, ELECTRICAL CONTRACTOR SHALL PROVIDE COMPLETE ASSEMBLY INCLUSIVE ALL PARTS AND HARDWARE TO INSURE PROPER FUNCTIONING FIXTURE.
 - ALL CONDUCTORS SHALL BE A MINIMUM OF #12 AWG UNLESS NOTED OTHERWISE.
 - ALL 120V RUNS LONGER THAN 60 FEET SHALL BE #10 AWG AND 277V RUNS LONGER THAN 150 FEET SHALL BE #10 AWG UNLESS NOTED OTHERWISE.
 - ALL CONDUCTORS SHALL BE COPPER.
 - WHERE CONDUCTOR SIZES ARE NOTED ON DRAWINGS, THAT WIRE SIZE SHALL BE THROUGH THE ENTIRE RUN UNLESS OTHERWISE NOTED.
 - MOUNTED LIGHT SWITCHES 48" AFF UNLESS NOTED OTHERWISE ON ARCHITECTURAL DRAWINGS.
 - WHERE MORE THAN ONE SWITCH OCCURS IN THE SAME LOCATION, THEY SHALL BE INSTALLED IN A GANG TYPE BOX UNDER ONE COVER PLATE. ALL GANGED SWITCHES SHALL HAVE A COMMON SEAMLESS FACEPLATE. EACH MULTI-GANGED BOX SHALL BE NO MORE THAN SIX (6) SWITCHES WIDE. WHERE MORE THAN SIX (6) SWITCHES ARE SHOWN AT ONE (1) LOCATION, ADDITIONAL MULTI-GANGED BOXES SHALL BE STACKED VERTICALLY AND THE WIDTH OF THE MULTI-GANGS SHALL BE AS EVEN AS POSSIBLE.
 - EACH DIMMER SWITCH SHALL HAVE A WATTAGE RATING 25% HIGHER THAN THE TOTAL WATTAGE OF ALL LIGHTS TO BE CONTROLLED BY THE DIMMER. DIMMER SIZES 600, 1000, 1500, AND 2000 WATTS, LUTRON NOVA T-STAR. WHERE SWITCHES ARE GANGED WITH DIMMERS, THE SWITCHES SHALL ALSO BE LUTRON NOVA T-STAR. FLUORESCENT AND LOW VOLTAGE DIMMERS SHALL BE LUTRON NOVA T-STAR.
 - ALL EMERGENCY EXIT LIGHT FIXTURES SHALL HAVE 90 MINUTE BATTERY BACKUP WITH INTEGRAL TEST BUTTON AND SHALL BURN CONTINUOUSLY.
 - ALL FLUORESCENT FIXTURES THAT UTILIZE DOUBLE-ENDED LAMPS AND CONTAIN BALLASTS SHALL BE PROVIDED WITH A DISCONNECTING MEANS IN ACCORDANCE WITH NEC 410.136.

DAMMON ENGINEERING, INC.

LOUISIANA & MISSISSIPPI

Chief Engineer: Brian Misch, PE
www.dammonengineering.com
info@dammoneng.com
Sibley, LA 70459
PH: 985.649.9832

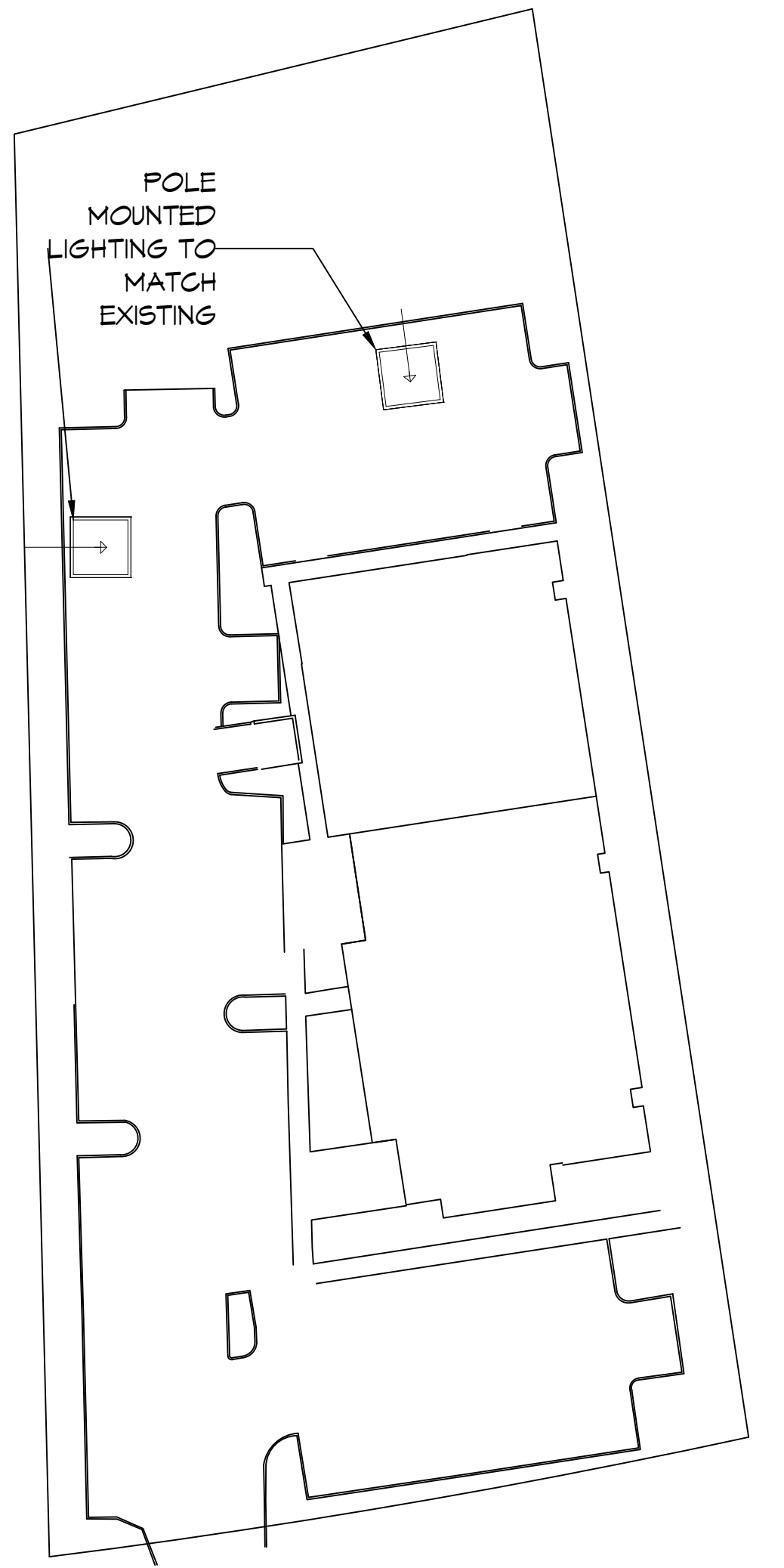


SITE LIGHTING

WALL OR POLE MOUNTED EXTERIOR LIGHTING SHALL HAVE EITHER A FULL CUT-OFF FIXTURE OR A FULLY SHIELDED FIXTURE. NO DIRECT LIGHTING OR GLARE BE CAST BEYOND THE PROPERTY LINE. THE INTENSITY OF SUCH LIGHTING SHALL NOT EXCEED ONE FOOT CANDLE AS MEASURED AT THE ADJUTING PROPERTY LINE.

KEYED NOTES

PROVIDE CONNECTION TO UN-SWITCHED HOT LIGHTING CIRCUIT AND SHALL HAVE 90 MINUTE EMERGENCY BATTERY BACKUP.



27 LIGHTING PLAN
SCALE: 3/16"=1'-0"

POLE MOUNTED SITE LIGHTING
SCALE: N.T.S.

REVISIONS	DATE
1	3/9/2022
2	4/6/2022
3	5/12/2022
4	6/15/2022



NEW ADDITION

H O N T A S M O B

SHEET TITLE:
LIGHTING PLAN

DRAWING NUMBER:

E102

1121 LA HWY 21
COVINGTON, LA 70433
JOB No: 2443 DATE: 6-15-2022
DRAWN BY: [Signature] CHECKED BY: [Signature]

SHEET No: 15 of 19