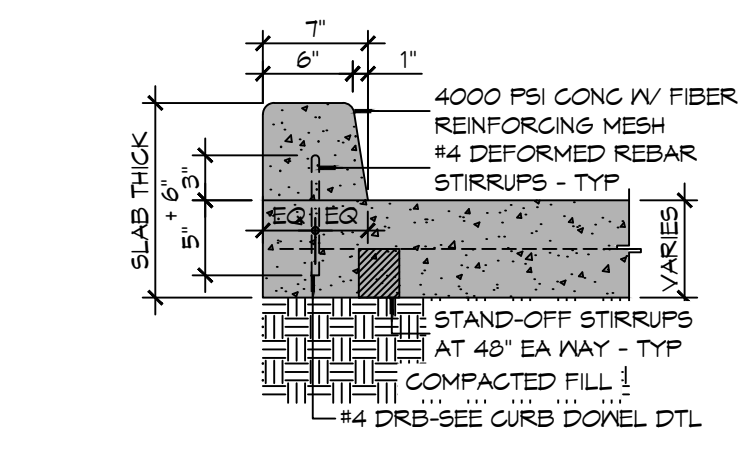
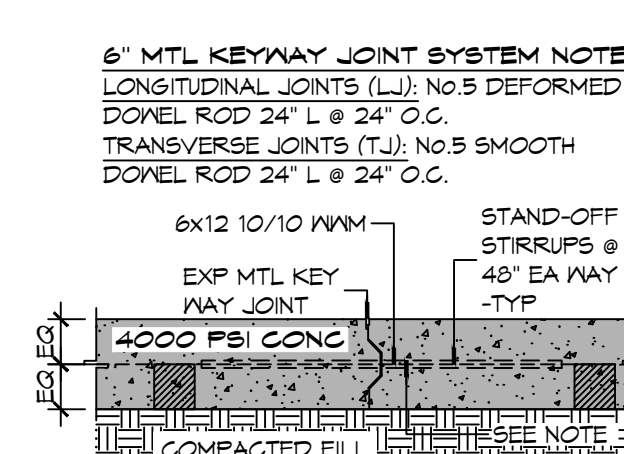


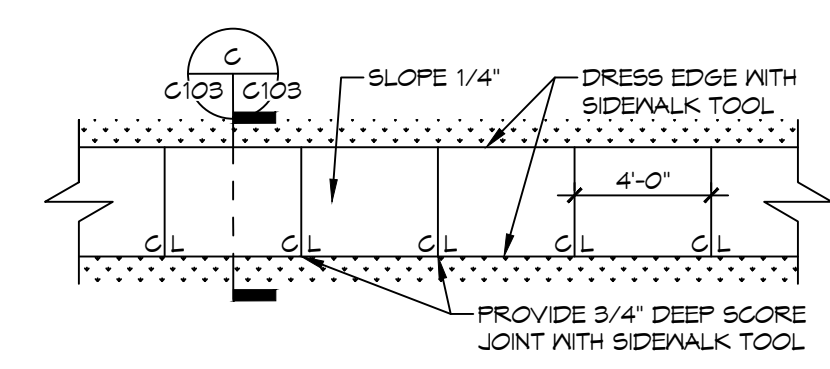
FILE NAME: A:\Projects\2022\2443 - New Building - 8/15/2022\Drawings\8 SITE PAVING PLAN.dwg
 PLOT DATE: 8/15/2022 10:53:04 AM
 PLOT BY: JMM



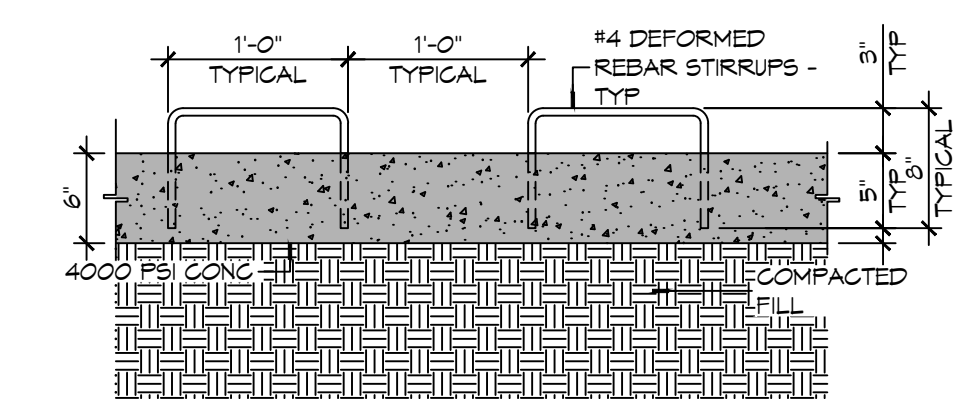
9 CURB
SCALE: 1" = 1'-0" TYPICAL



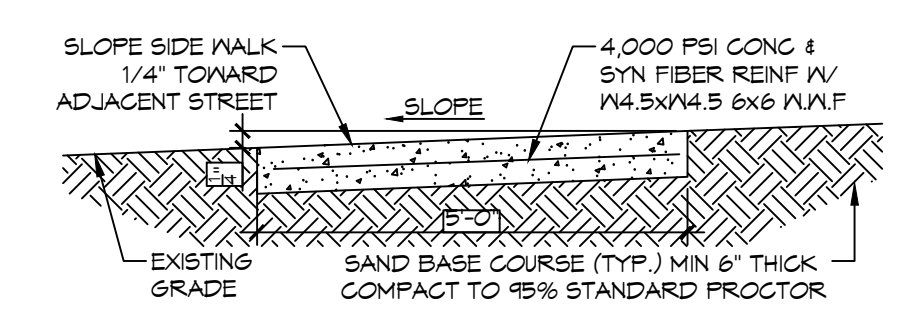
10 PAVEMENT JOINT
SCALE: 1" = 1'-0" TYPICAL



11 SIDEWALK TYP.
SCALE: 1" = 1'-0" PLAN VIEW



12 CURB DOVEL
SCALE: 1" = 1'-0" TYPICAL



C SIDEWALK TYP.
SCALE: 1" = 1'-0" SECTION VIEW

GENERAL PAVING NOTES

- ALL NEW CONCRETE SHALL HAVE A MINIMUM COMPRESSIVE STRENGTH OF 4,000 PSI AT 28 DAYS AND A MINIMUM THICKNESS OF 6". CONCRETE MIX SHALL BE IN ACCORDANCE WITH THE LATEST REVISION OF ASTM C-150 TYPE 1.
- CONCRETE PAVING THICKNESS SHALL VARY AS FOLLOWS:
 - APRONS & LOADING AREAS = 8" THICKNESS (INDICATED WITH CROSS HATCH WHERE OCCURS)
 - DRIVE LANES & PARKING AREAS = 6" THICKNESS (STANDARD UNO)
- ALL REINFORCING STEEL SHALL MEET ASTM-A615 (GRADE 60).
- ALL REINFORCING STEEL SHALL BE SECURELY SUPPORTED TO PREVENT BOTH VERTICAL AND HORIZONTAL MOVEMENT DURING CONCRETE PLACEMENT. ALL CONTROL AND EXPANSION JOINTS SHALL BE LOCATED AND INSTALLED AS SHOWN ON THE PAVING PLAN AND IN ACCORDANCE WITH THE MANUFACTURER'S RECOMMENDATIONS.
- ALL SUB GRADE FILL SHALL BE SELECT GRANULAR MATERIAL COMPACTED TO 95% STANDARD PROCTOR DENSITY IN A MAXIMUM OF 6" LIFTS.
- ANY WORK WITHIN THE ROADWAY OR ADJACENT TO THE ROADWAY CAUSING AN INTERFERENCE TO VEHICULAR TRAFFIC MUST CONFORM TO THE REQUIREMENTS SET FORTH BY THE UNIFORM MANUAL OF TRAFFIC CONTROL DEVICES OF THE STATE OF LOUISIANA. THE CONTRACTOR MUST FURNISH ALL NECESSARY TRAFFIC SIGNS AND/OR BARRICADES AND MAINTAIN THEM DURING CONSTRUCTION ACTIVITY.

SITE LEGEND

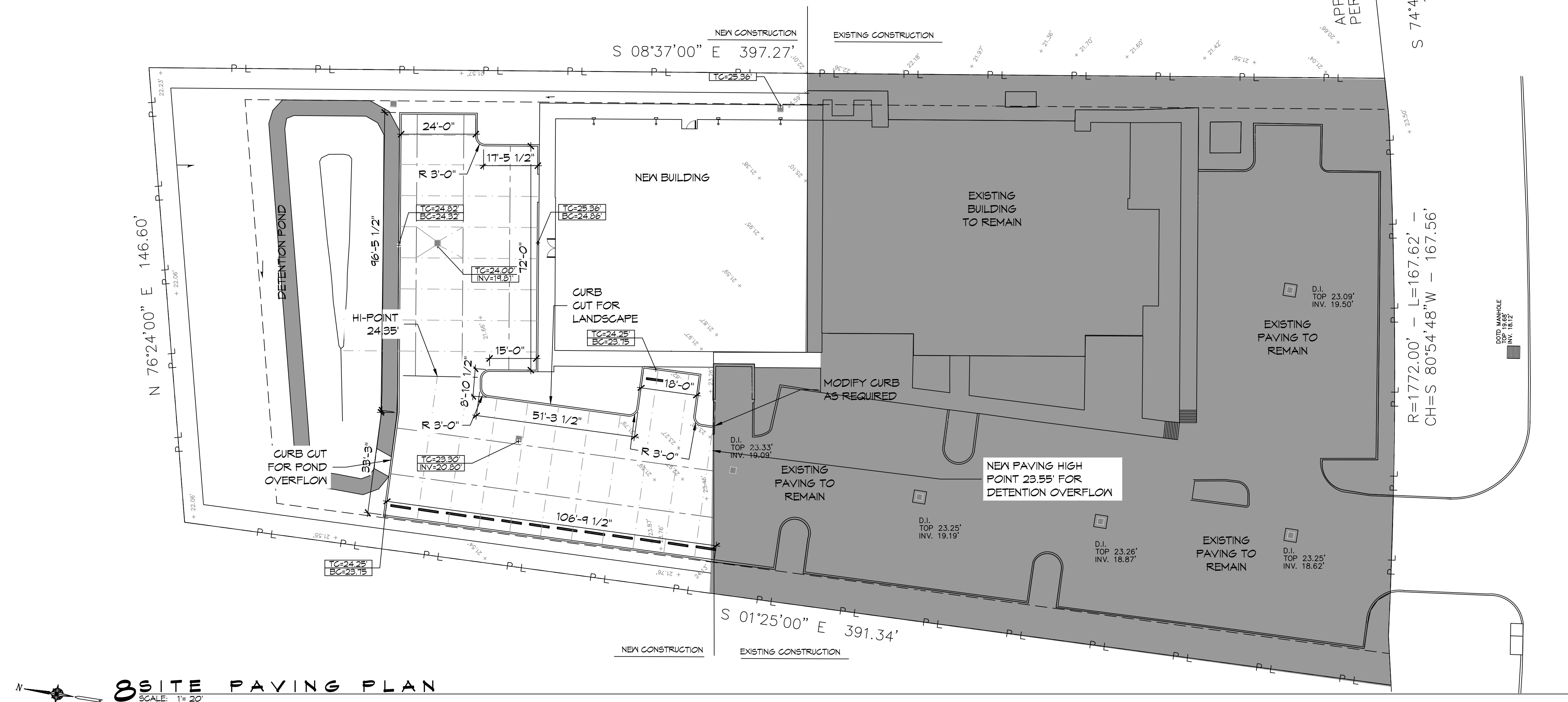
- CATCH BASIN
- EXISTING ELEVATIONS
- TOP OF CONCRETE OR TOP OF CURB
- BOTTOM OF CURB
- TOP OF CATCH BASIN INVERT OF CATCH BASIN
- LONGITUDINAL JOINTS (LJ) = NO. 5 DEFORMED DONEL RODS 24" LONG @ 24" O. C.
- TRANSVERSE JOINTS (TJ) = NO. 5 SMOOTH DONEL RODS 24" LONG @ 24" O. C.

DRAINAGE ABBREVIATIONS

- TC TOP OF CATCH BASIN OR TOP OF CURB
- BC BOTTOM OF CURB
- INV INVERT
- TQB TOP OF BERM

UTILITY AND SITE DISCLAMER

- THIS DRAWING IS NOT INTENDED TO BE UTILIZED AS A BOUNDARY SURVEY. IT HAS BEEN PROVIDED AS A COURTESY BASED ON CORNERS FOUND AND PROVIDED BY OWNER OR HIS REP.
- UNDERGROUND UTILITIES MAY BE PRESENT ON THIS SITE WHICH MAY OR MAY NOT BE DEPICTED ON THIS PLAN. THIS MAP SHOULD NOT BE CONSIDERED DEFINITIVE AS TO LOCATION, NUMBER, TYPE, ETC. OF UTILITIES PRESENT ON THE SITE.
- CONTRACTOR SHALL CONTACT LA ONE CALL PRIOR TO COMMENCEMENT. PRIVATE UTILITIES SHALL BE COORDINATED WITH OWNER OR THIRD PARTY LOCATION COMPANY.



8 SITE PAVING PLAN
SCALE: 1" = 20'

DAMMON ENGINEERING, INC.
 LOUISIANA & MISSISSIPPI
 Chief Engineer: Brian Misch, PE
 554 Old Spanish Trail
 Slidell, LA 70458
 www.dammonengineering.com
 info@dammonengineering.com
 PH: 985.649.5832

#	DESCRIPTION	REVISIONS	DATE
1	Revised Parking for Detention Pond		7/1/2022

SEAL:

NEW ADDITION

H O N T A S M O O B

1211 LA HWY 21
 COVINGTON, LA 70438
 JOB No: 2443
 DATE: 6-15-2022
 DRAWN BY: PFP
 CHECKED BY: CKD

SHEET TITLE:
PAVING PLAN

DRAWING NUMBER:
C103

SHEET No: 5 of 19