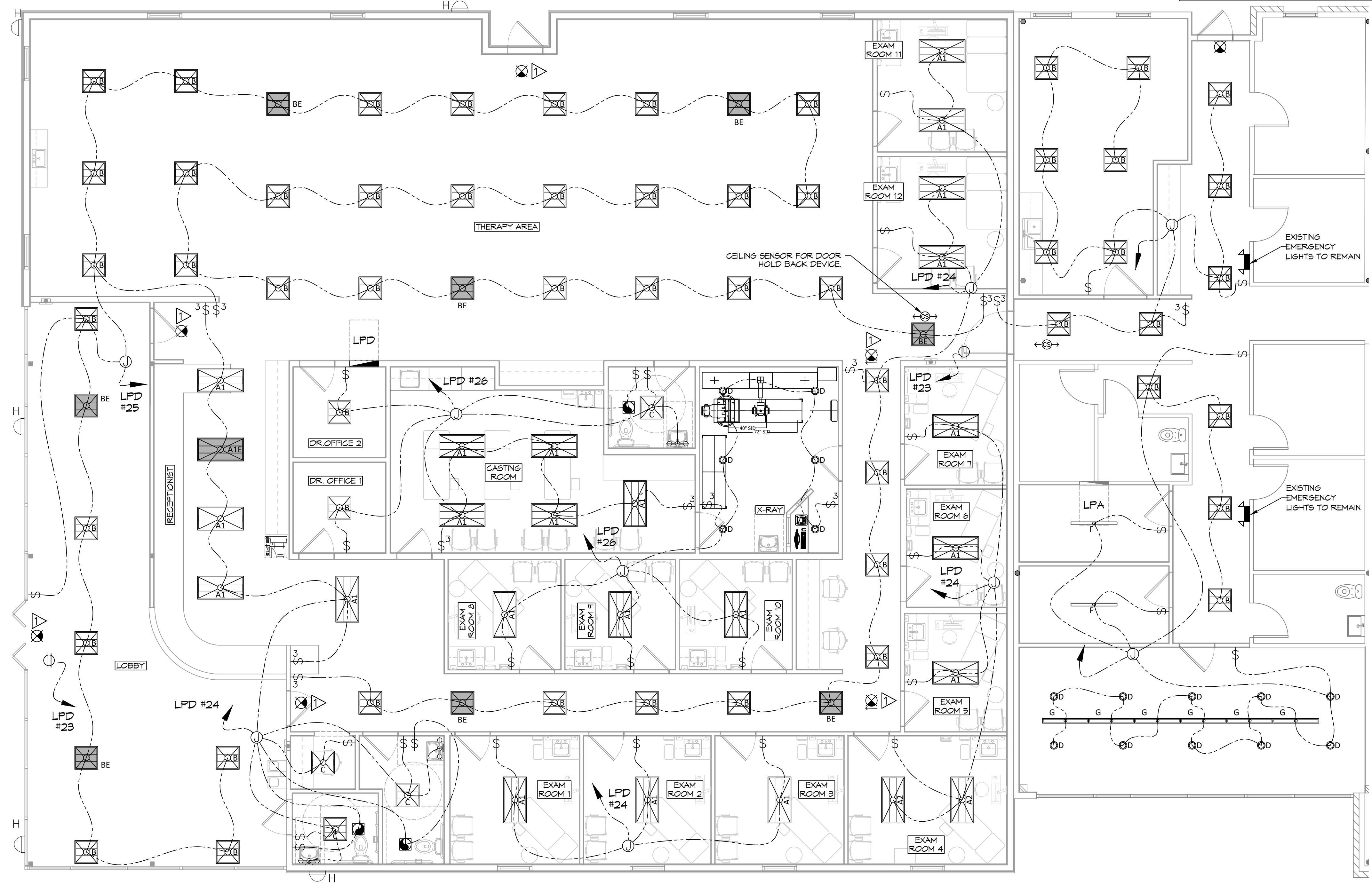


LIGHTING LEGEND

	2x4 COLUMBIA LCAT24-30-ML6-EU (E INDICATES EMERGENCY LIGHT)		2x2 COLUMBIA LCAT22-30-ML6-EU (E INDICATES EMERGENCY LIGHT)
	2x4 COLUMBIA LCAT24-30-HL6-EU		2x2 COLUMBIA LCAT22-L535 (4400LM)
	PRESCOLITE LTR-4RD-H-SL15L-DM1- LTR-4RD-T-SL30K-BVDS		48" COLUMBIA MP54-35VW-CN-EDU
	EXTERIOR LIGHT, MATCH EXISTING AND CONNECT TO EXISTING CIRCUIT		48" LITECONTROL 4L-P-D-4-SOF-X-CX- 35K-D030
	VANITY LIGHT FIXTURE		EXIT LIGHT FIXTURE - CEILING MOUNTED
	EXHAUST FAN - SEE MECHANICAL		POLE MOUNTED LIGHT; MATCH EXISTING; CONNECT TO EXISTING CIRCUIT
	JUNCTION BOX		EXISTING POWER PANEL (LPA)
	SINGLE POLE LIGHT SWITCH		NEW POWER PANEL (LPD)
	3 WAY LIGHT SWITCH		CEILING SENSOR
	CEILING OUTLET		HOME RUN

- ### GENERAL LIGHTING NOTES
- ALL WORK SHALL COMPLY WITH APPLICABLE NATIONAL, STATE, AND LOCAL CODES, RULES, REGULATIONS, AND REQUIREMENTS OF THE SERVICE UTILITY COMPANY.
 - GENERAL CONTRACTOR SHALL NOTIFY THE ARCHITECT IMMEDIATELY IF ANY CONFLICTS OCCUR BETWEEN LIGHTING AND ANY OTHER TRADE. DO NOT PROCEED WITH INSTALLATION IN THAT AREA UNTIL CONFLICT HAS BEEN RESOLVED TO THE SATISFACTION OF THE ARCHITECT AND ENGINEER.
 - REFER TO ARCHITECTURAL DRAWINGS FOR EXACT LOCATION AND MOUNTING INSTRUCTIONS FOR ALL LIGHT FIXTURES. NOTIFY THE ARCHITECT AND ENGINEER OF ANY DISCREPANCIES BETWEEN THESE PLANS AND THE ARCHITECTURAL PLANS RELATING TO QUANTITY, TYPE AND LOCATION OF DEVICES AND/OR FIXTURES.
 - WHEN SPECIFIC LIGHT FIXTURE HAS BEEN SPECIFIED IN THE FIXTURE SCHEDULE, ELECTRICAL CONTRACTOR SHALL PROVIDE COMPLETE ASSEMBLY INCLUSIVE ALL PARTS AND HARDWARE TO INSURE PROPER FUNCTIONING FIXTURE.
 - ALL CONDUCTORS SHALL BE A MINIMUM OF #12 AWG UNLESS NOTED OTHERWISE.
 - ALL 120V RUNS LONGER THAN 60 FEET SHALL BE #10 AWG AND 277V RUNS LONGER THAN 150 FEET SHALL BE #10 AWG UNLESS NOTED OTHERWISE.
 - ALL CONDUCTORS SHALL BE COPPER.
 - WHERE CONDUCTOR SIZES ARE NOTED ON DRAWINGS, THAT WIRE SIZE SHALL BE THROUGH THE ENTIRE RUN UNLESS OTHERWISE NOTED.
 - MOUNTED LIGHT SWITCHES 48" AFF UNLESS NOTED OTHERWISE ON ARCHITECTURAL DRAWINGS.
 - WHERE MORE THAN ONE SWITCH OCCURS IN THE SAME LOCATION, THEY SHALL BE INSTALLED IN A GANG TYPE BOX UNDER ONE COVER PLATE. ALL GANGED SWITCHES SHALL HAVE A COMMON SEAMLESS FACEPLATE. EACH MULTI-GANGED BOX SHALL BE NO MORE THAN SIX (6) SWITCHES WIDE. WHERE MORE THAN SIX (6) SWITCHES ARE SHOWN AT ONE (1) LOCATION, ADDITIONAL MULTI-GANGED BOXES SHALL BE STACKED VERTICALLY AND THE WIDTH OF THE MULTI-GANGS SHALL BE AS EVEN AS POSSIBLE.
 - EACH DIMMER SWITCH SHALL HAVE A WATTAGE RATING 25% HIGHER THAN THE TOTAL WATTAGE OF ALL LIGHTS TO BE CONTROLLED BY THE DIMMER. DIMMER SIZES 600, 1000, 1500, AND 2000 WATTS, LUTRON NOVA T-STAR. WHERE SWITCHES ARE GANGED WITH DIMMERS, THE SWITCHES SHALL ALSO BE LUTRON NOVA T-STAR. FLUORESCENT AND LOW VOLTAGE DIMMERS SHALL BE LUTRON NOVA T-STAR.
 - ALL EMERGENCY EXIT LIGHT FIXTURES SHALL HAVE 90 MINUTE BATTERY BACKUP WITH INTEGRAL TEST BUTTON AND SHALL BURN CONTINUOUSLY.
 - ALL FLUORESCENT FIXTURES THAT UTILIZE DOUBLE-ENDED LAMPS AND CONTAIN BALLASTS SHALL BE PROVIDED WITH A DISCONNECTING MEANS IN ACCORDANCE WITH NEC 410.136.

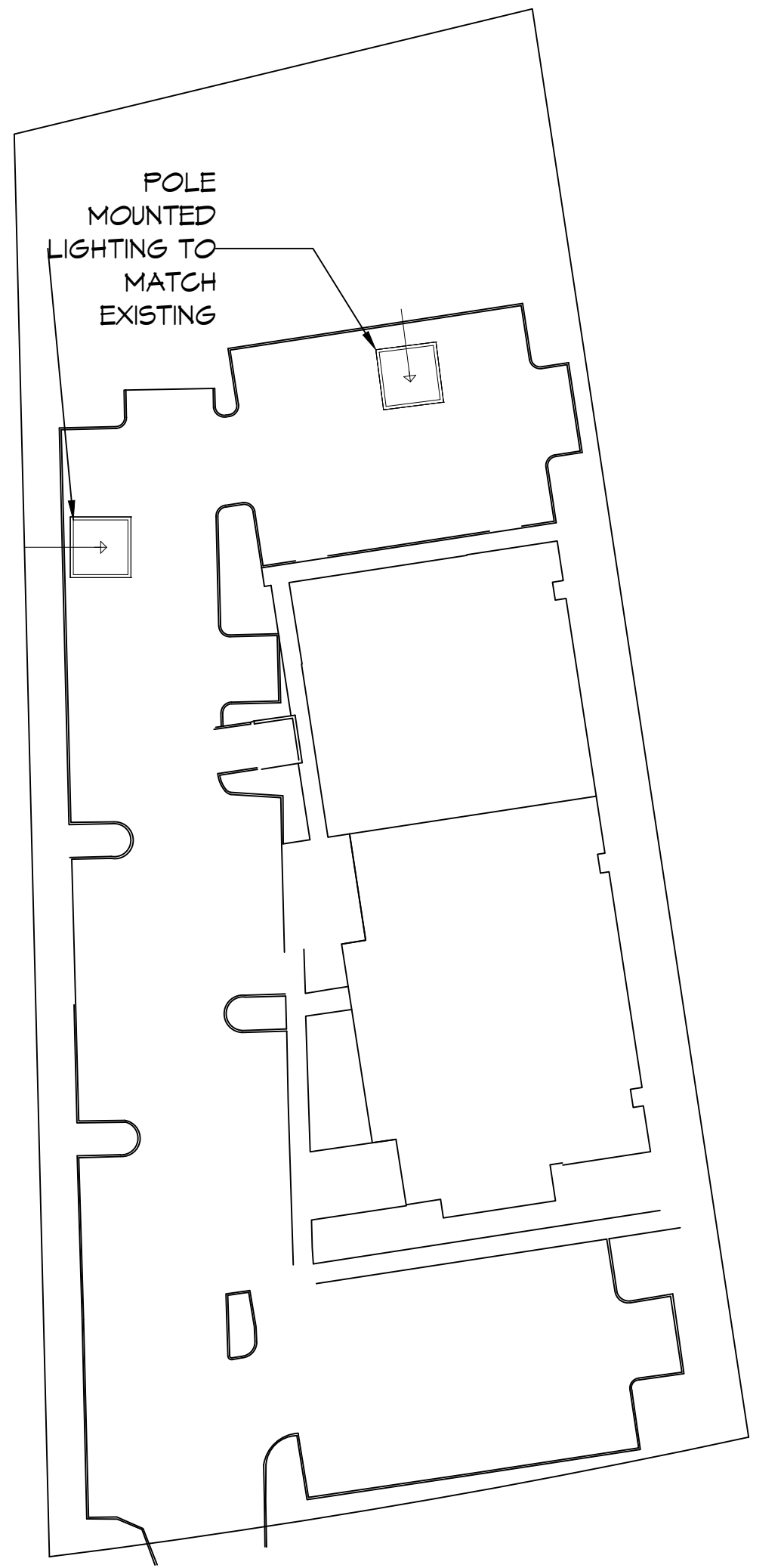


SITE LIGHTING

WALL OR POLE MOUNTED EXTERIOR LIGHTING SHALL HAVE EITHER A FULL CUT-OFF FIXTURE OR A FULLY SHIELDED FIXTURE. NO DIRECT LIGHTING OR GLARE BE CAST BEYOND THE PROPERTY LINE. THE INTENSITY OF SUCH LIGHTING SHALL NOT EXCEED ONE FOOT CANDLE AS MEASURED AT THE ADJUTING PROPERTY LINE.

KEYED NOTES

PROVIDE CONNECTION TO UN-SWITCHED HOT LIGHTING CIRCUIT AND SHALL HAVE 90 MINUTE EMERGENCY BATTERY BACKUP.



DAMMON ENGINEERING, INC.

LOUISIANA & MISSISSIPPI

Chief Engineer: Brian Misch, PE
www.dammonengineering.com
info@dammonengineering.com
Sibley, LA 70459
PH: 985.649.5832

#	DESCRIPTION	DATE
1	Removed HVAC Returns in Existing Facility	3/9/2022
2	Added Exam Rooms 12 & 13	4/9/2022
3	Revised Exam Rooms & X-Ray Layout	7/7/2022



NEW ADDITION
H O N T A S M O B

SHEET TITLE:
LIGHTING PLAN

DRAWING NUMBER:

1121 LA HWY 21
COVINGTON, LA 70433
JOB No: 2443 DATE: 6-15-2022
DRAWN BY: DPD CHECKED BY: GKD

E102

SHEET No: 15 of 19

27 LIGHTING PLAN
SCALE: 3/16"=1'-0"

POLE MOUNTED SITE LIGHTING
SCALE: N.T.S.